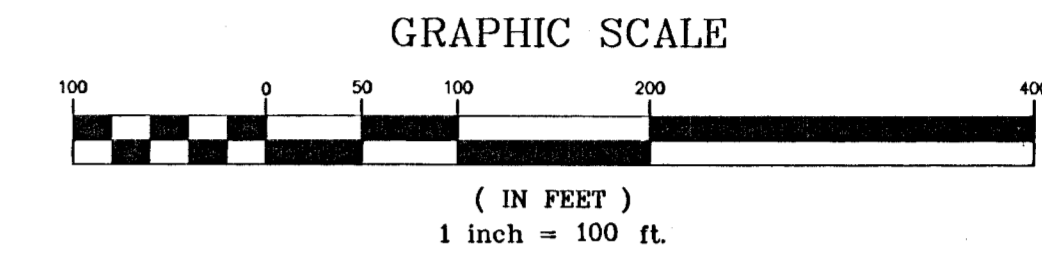


STREET IMPROVEMENTS TO SERVE SMITHMOOR 10TH ADDITION, PHASE 1 WICHITA, KANSAS

Michael E. Lindebak, P.E., City Engineer
PROJECT NO.: 472-83396
OCA # 765688

Index of Sheets:

- 1 Title
- 2 Typical Section (29' B-B)
- 3 Funston Paving
- 4 Justin Circle Paving
- 5 Derrick Circle Paving
- 6 Funston-Greenwich Paving
- 7 Signing Details
- 8 Valley Gutter Detail
- 9 Storm Sewer Plan and Profile
- 10 Typical 1-A Inlet Details (Double)
- 11 Greenwich Ditch Grading
- 12-14 BMP Details
- 15-24 Cross Sections



GENERAL NOTES

1. Contractor will be required to provide notice to utility companies a minimum of twenty-four (24) hours prior to any excavation, as follows:

Kansas One-Call 687-2470

The Contractor must notify the following in case of an emergency:

- Cox Communications 262-4270
- or 263-2061
- K.P.L. Gas Service Company 383-8650
- Kansas Gas & Electric Company 383-8600
- Arka Gas Company 942-8350
- Southwestern Bell Telephone Company 1-571-2611
- City of Wichita Water Department 268-4908
- City of Wichita Sewer Department 268-4071
- Kansas Gas Service 832-3168
- or 832-3167
- Peoples Natural Gas 942-8811
- or 1-800-303-0357

2. Exist. utilities and their locations, as shown on the plans, represent the best information obtainable for design. Location information has been obtained from the various utility companies and is either from company record drawings or company-provided field locations. The Contractor will be required to work around existing utilities which do not conflict with proposed construction.

3. The Contractor to verify utility locations prior to construction of this project.

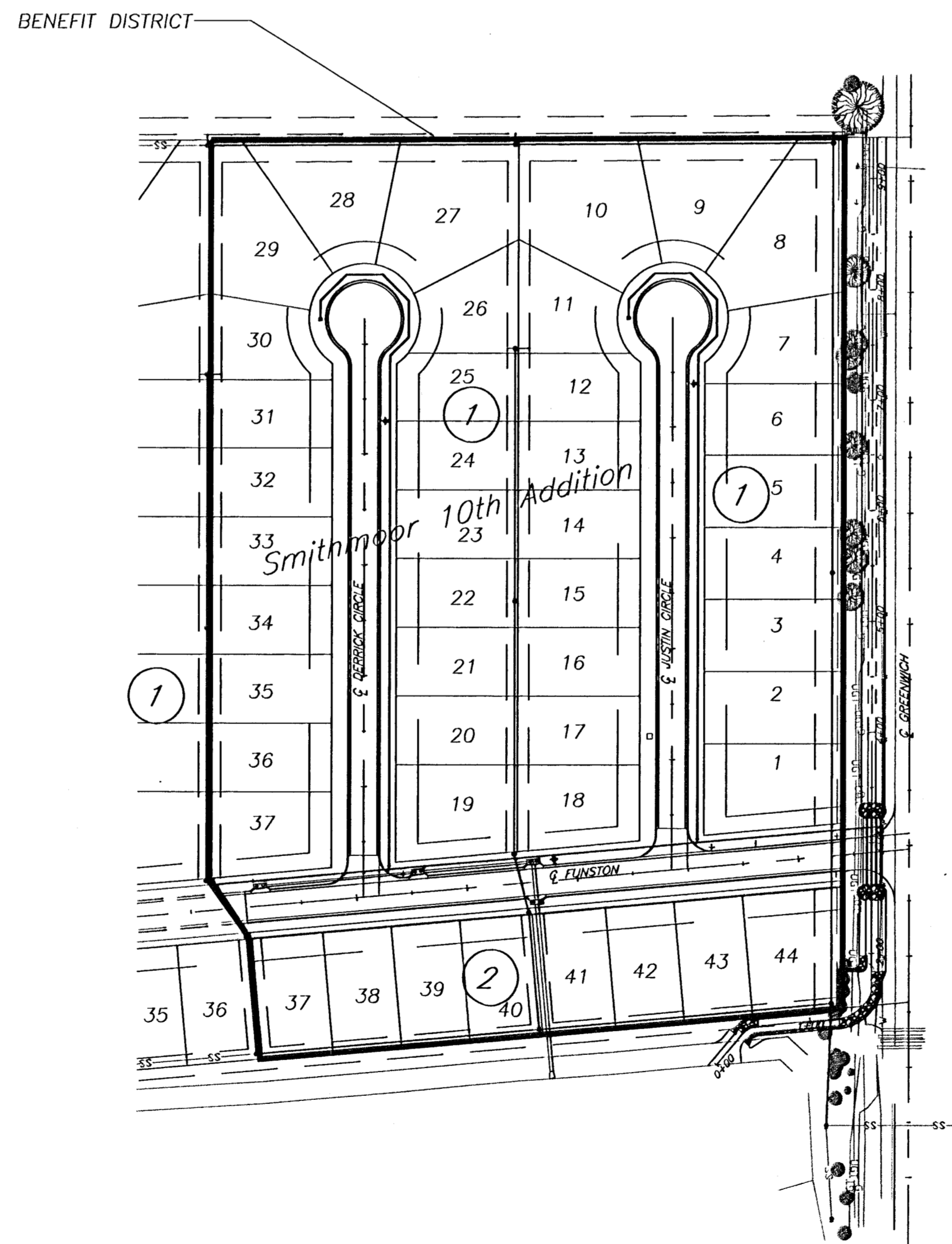
4. Utility service and installation shall be coordinated with the respective utility owners. Contacts are:

- Kansas Gas Service James Stoltz 831-3122
- K.G.E. Russ Chitwood 261-6251
- Peoples Natural Gas John Stark 942-8811
- Wichita Water Paul Bryant 268-4555
- Steve Palmer 268-4908
- Southwestern Bell Jim Tabin 268-2759
- Cox Communications Mark Anaya 262-4270

5. All lawn/turf areas disturbed by construction of proposed improvements shall be restored with sod. All sodding work shall be in accordance with the City of Wichita standard specifications and the City of Wichita administrative regulation No. AR78 which governs cleanup and replacement following construction. All costs for this work shall be subsidiary to the lump sum price bid for "Site Restoration."

6. Traffic affected by the construction of this project shall be handled in accordance with the latest edition of the Manual on Uniform Traffic Control Devices.

7. All commercial signs to be moved by others prior to construction.



PROJECT LENGTH

STREET	LENGTH
FUNSTON	587.14
DERRICK CIRCLE	546.33
JUSTIN CIRCLE	523.07
TOTAL	1656.54

DIRTWORK

Streets	
Borrow Excavation	0 CY
Excavation	3334 CY
Compacted Fill (90% Density)	0 CY
Compacted Fill (95% Density)	209 CY
Loose Fill	648 CY
Drainage Ditch	
Excavation	1289 CY
Fill	172 CY

DRAINAGE
BOOKED
1-16-02
M.E.S.
C-205

BENCHMARKS:

- BM#1 City disc on the SW corner traffic signal base on the NE corner of the intersection of Harry St. and Greenwich Rd. Elev. = 1343.49 USGS
- BM#2 "I" cut on the SW corner of the N. Headwall at the east end of pond on the W. side of Greenwich Rd., approx. 1000' S. of Harry St. Elev. = 1341.87 USGS



516 S. Market,
Wichita, KS 67202

316/264-0242