

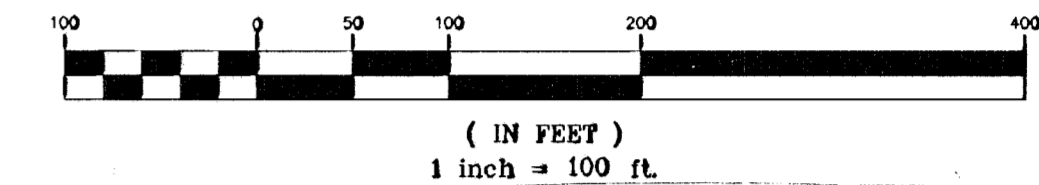
# STREET IMPROVEMENTS TO SERVE SMITHMOOR 10TH ADDITION, PHASE 1 WICHITA, KANSAS

**Michael E. Lindebak, P.E., City Engineer**  
**PROJECT NO.: 472-83396**  
**OCA # 765688**

**Index of Sheets:**

1	Title
2	Typical Section (29' B-B)
3	Funston Paving
4	Justin Circle Paving
5	Derrick Circle Paving
6	Funston-Greenwich Paving
7	Signing Details
8	Valley Cutter Detail
9	Storm Sewer Plan and Profile
10	Typical 1-A Inlet Details (Double)
11	Greenwich Ditch Grading
12-14	BMP Details
15-24	Cross Sections

GRAPHIC SCALE



## GENERAL NOTES

- Contractor will be required to provide notice to utility companies a minimum of twenty-four (24) hours prior to any excavation, as follows:  

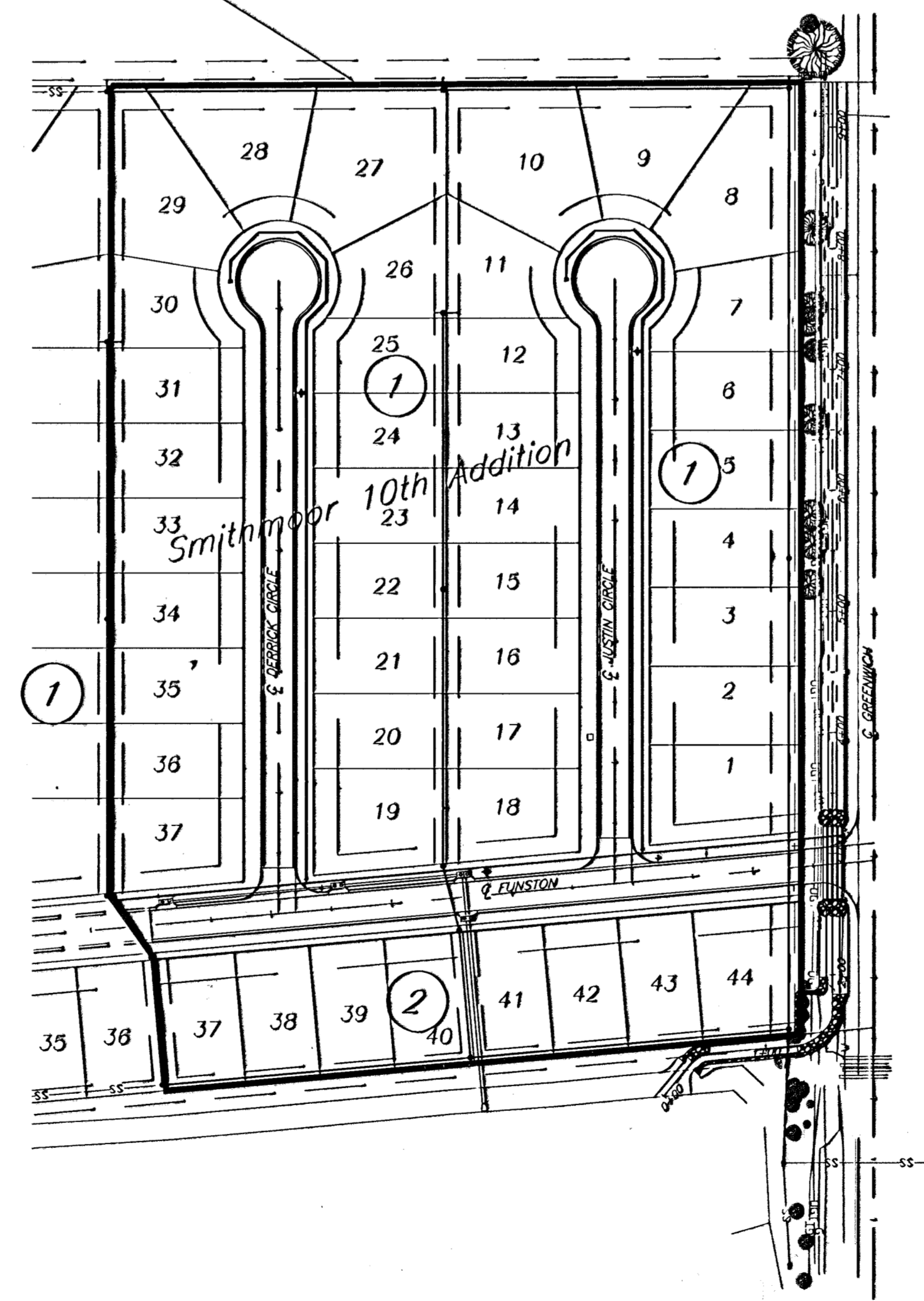
Kansas One-Call	687-2470
-----------------	----------

The Contractor must notify the following in case of an emergency:

Cox Communications	262-4270
or	263-2061
K.P.L. Gas Service Company	383-8650
Kansas Gas & Electric Company	383-8600
Arkia Gas Company	942-8350
Southwestern Bell Telephone Company	1-571-2611
City of Wichita Water Department	268-4908
City of Wichita Sewer Department	268-4071
Kansas Gas Service	832-3168
or	832-3167
Peoples Natural Gas	942-8811
or	1-800-303-0357
- Exist. utilities and their locations, as shown on the plans, represent the best information obtainable for design. Location information has been obtained from the various utility companies and is either from company record drawings or company-provided field locations. The Contractor will be required to work around existing utilities which do not conflict with proposed construction.
- The Contractor to verify utility locations prior to construction of this project.
- Utility service and installation shall be coordinated with the respective utility owners. Contacts are:  

Kansas Gas Service	James Stoltz	831-3122
K.G.E.	Russ Chitwood	261-6251
Peoples Natural Gas	John Stark	942-8811
Wichita Water	Paul Bryant	268-4555
	Steve Palmer	268-4908
Southwestern Bell	Jim Tobin	268-2759
Cox Communications	Mark Anaya	262-4270
- All lawn/turf areas disturbed by construction of proposed improvements shall be restored with sod. All sodding work shall be in accordance with the City of Wichita standard specifications and the City of Wichita administrative regulation No. AR78 which governs cleanup and replacement following construction. All costs for this work shall be subsidiary to the lump sum price bid for "Site Restoration."
- Traffic affected by the construction of this project shall be handled in accordance with the latest edition of the Manual on Uniform Traffic Control Devices.
- All commercial signs to be moved by others prior to construction.

BENEFIT DISTRICT



### PROJECT LENGTH

STREET	LENGTH'
FUNSTON	587.14
DERRICK CIRCLE	546.33
JUSTIN CIRCLE	523.07
TOTAL	1656.54

### DIRTWORK

<b>Streets</b>	
Borrow Excavation	0 CY
Excavation	3334 CY
Compacted Fill (90% Density)	0 CY
Compacted Fill (95% Density)	209 CY
Loose Fill	648 CY
<b>Drainage Ditch</b>	
Excavation	1289 CY
Fill	172 CY

### BENCHMARKS:

- BM#1 City disc on the SW corner traffic signal base on the NE corner of the intersection of Harry St. and Greenwich Rd.  
Elev. = 1343.49 USGS
- BM#2 "I" cut on the SW corner of the N. Headwall at the east end of pond on the W. side of Greenwich Rd., approx. 1000' S. of Harry St.  
Elev. = 1341.87 USGS

DRAINAGE  
BOOKED  
1-16-02  
MCG  
C-205



**kemiller**  
engineering

516 S. Market,  
Wichita, KS 67202

316/264-0242