

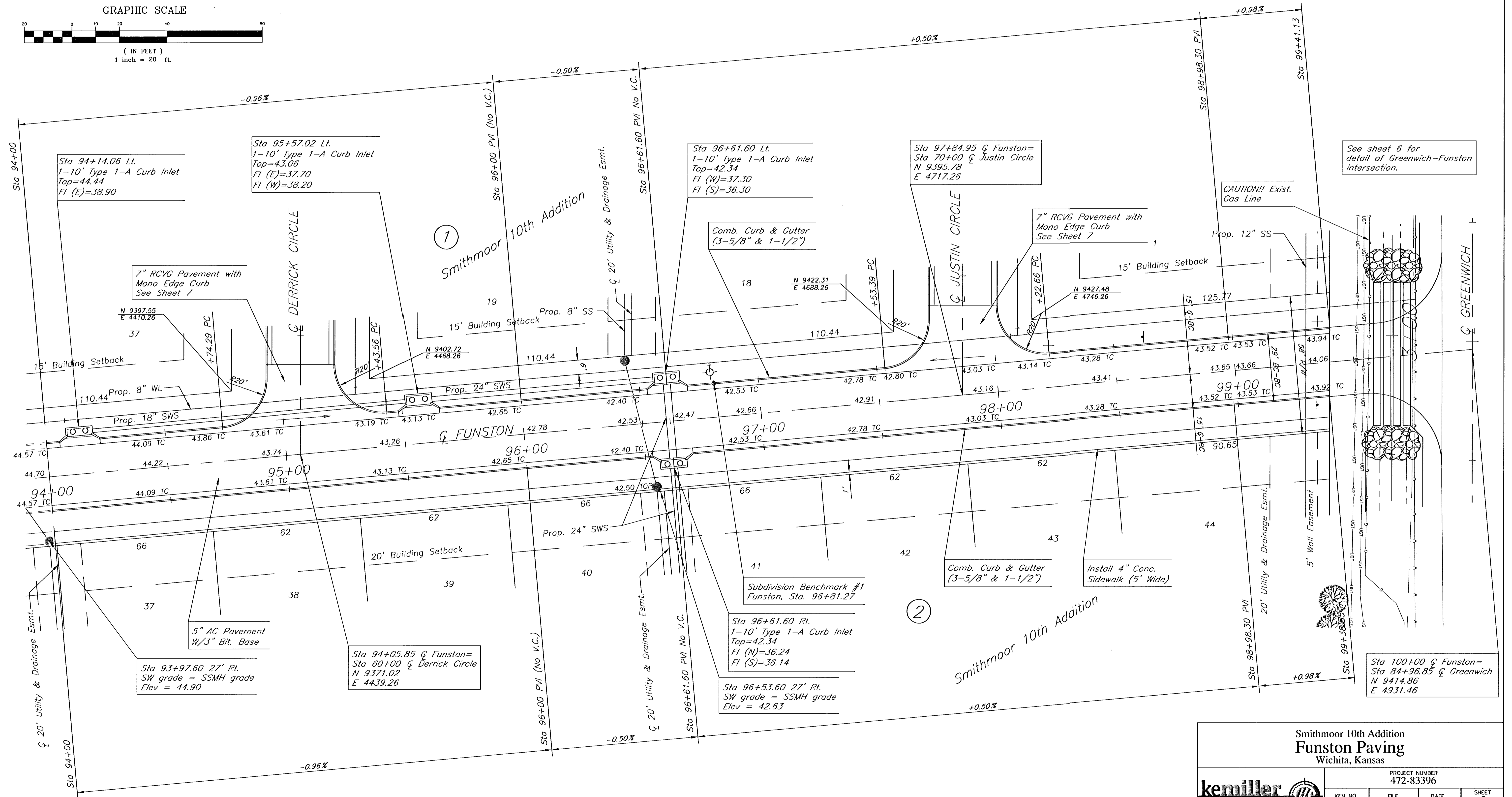
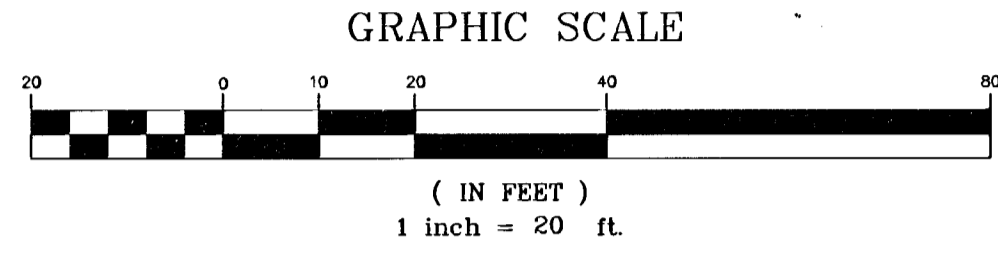


BENCHMARKS:

BM#1 City disc on the SW corner traffic signal base on the NE corner of the intersection of Harry St. and Greenwich Rd. Elev. = 1343.49 USGS

BM#2 "□" cut on the SW corner of the N. Headwall at the east end of pond on the W. side of Greenwich Rd., approx. 1000' S. of Harry St. Elev. = 1341.87 USGS

No.	Street and Station	From CL	Description	Elevation
1	Funston, Sta. 96+81.27	14.25'	North curb line of Funston in front of Fire Hydrant, 320' West of Greenwich	
2	Justin Circle, Sta. 74+41.27	14.25'	East curb line of Justin Circle in front of Fire Hydrant, 440' North of Funston	
3	Derrick Circle, Sta. 64+31.27	14.25'	East curb line of Derrick Circle in front of Fire Hydrant, 430' North of Funston	



See sheet 6 for detail of Greenwich-Funston intersection.

CAUTION!! Exist. Gas Line

Sta 100+00 C Funston = Sta 84+96.85 C Greenwich
N 9414.86
E 4931.46

**Smithmoor 10th Addition
Funston Paving
Wichita, Kansas**

kemiller <i>engineering</i>			
PROJECT NUMBER 472-83396			
KEM NO. 01022	FILE PVPLAN1	DATE 6/01	SHEET 3
DESIGN RR	DRAWN RR	REVISED 7/01	OF 24

516 S. Market, Wichita, KS 67202 316/264-0242