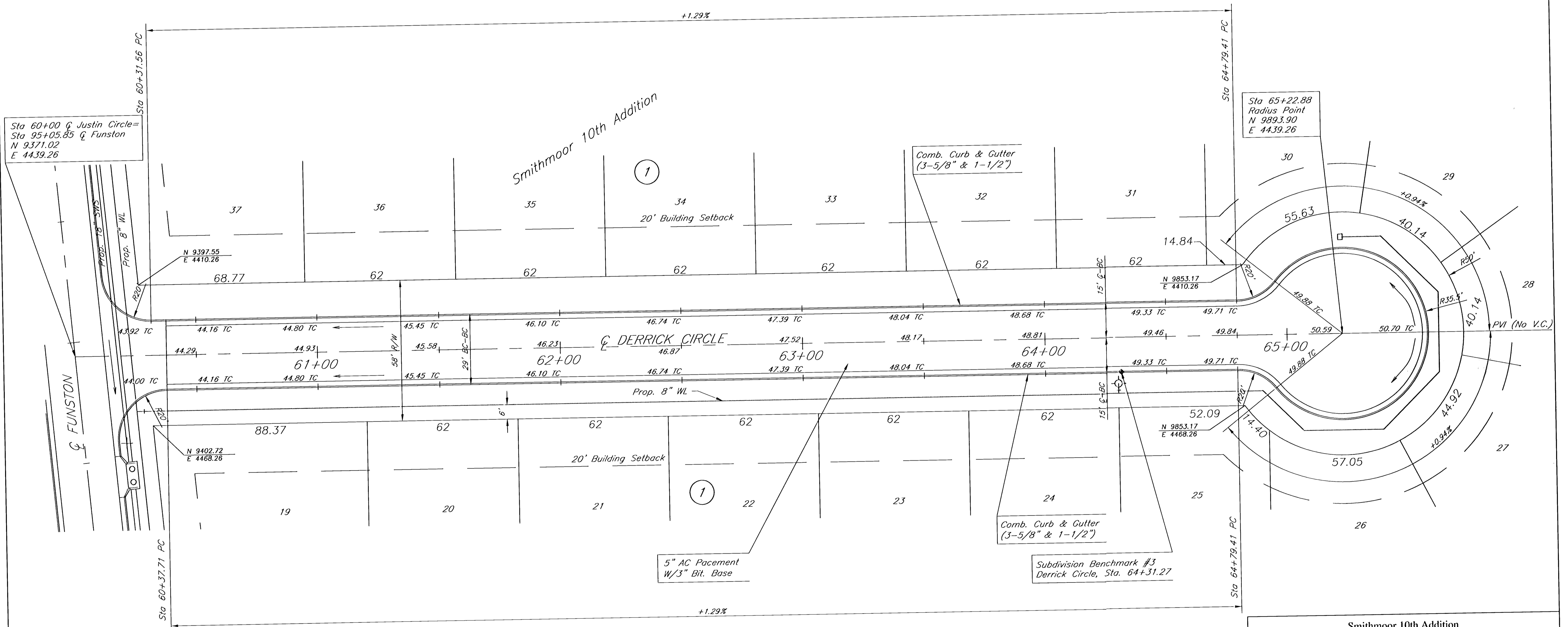


BENCHMARKS:

BM#1 City disc on the SW corner traffic signal base on the NE corner of the intersection of Harry St. and Greenwich Rd.
Elev. = 1343.49 USGS

BM#2 "□" cut on the SW corner of the N. Headwall at the east end of pond on the W. side of Greenwich Rd., approx. 1000' S. of Harry St.
Elev. = 1341.87 USGS



Sta 60+00 Q Justin Circle=
Sta 95+05.85 Q Funston
N 9371.02
E 4439.26

Sta 65+22.88
Radius Point
N 9893.90
E 4439.26

N 9397.55
E 4410.26

N 9853.17
E 4410.26

N 9402.72
E 4468.26

N 9853.17
E 4468.26

5" AC Pavement
W/3" Bit. Base

Comb. Curb & Gutter
(3-5/8" & 1-1/2")

Subdivision Benchmark #3
Derrick Circle, Sta. 64+31.27

**Smithmoor 10th Addition
Derrick Circle
Wichita, Kansas**

PROJECT NUMBER 472-83396			
kemiller <i>engineering</i>	KEM NO. 01022	FILE PVP/PLAN3	DATE 6/01
	DESIGN RR	DRAWN RR	REVISED
516 S. Market, Wichita, KS 67202			SHEET 5 OF 24