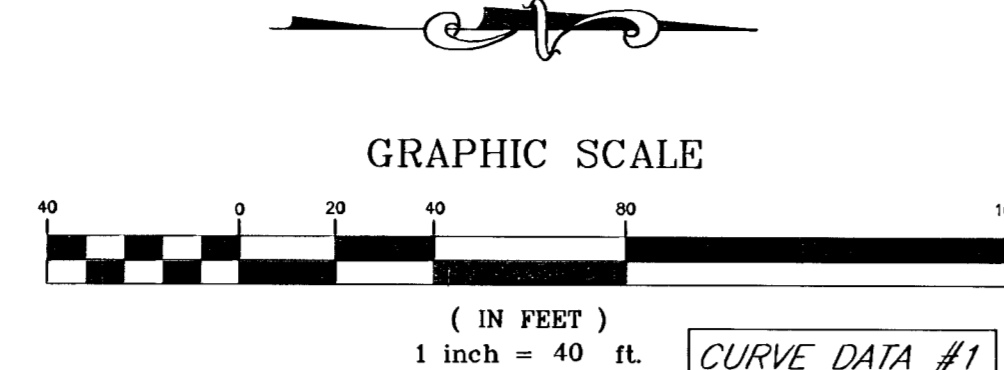


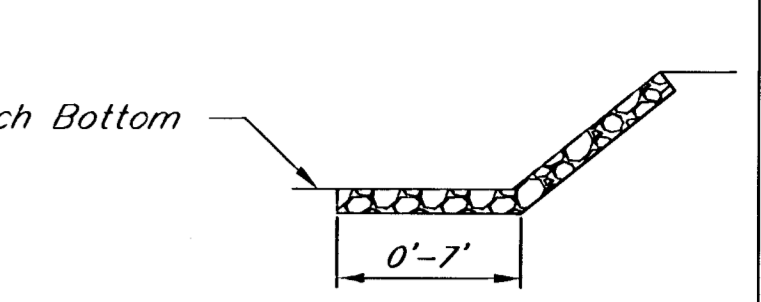
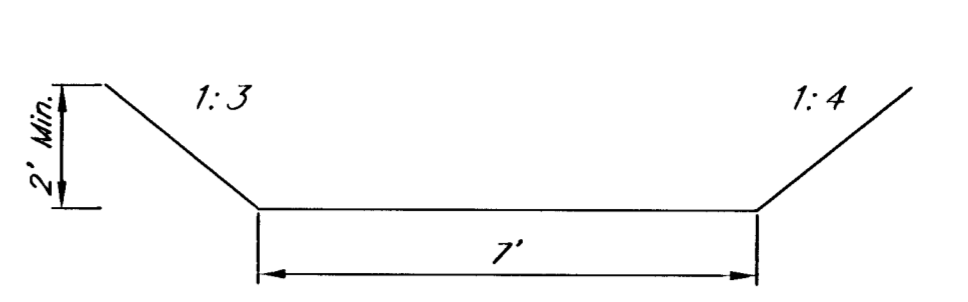
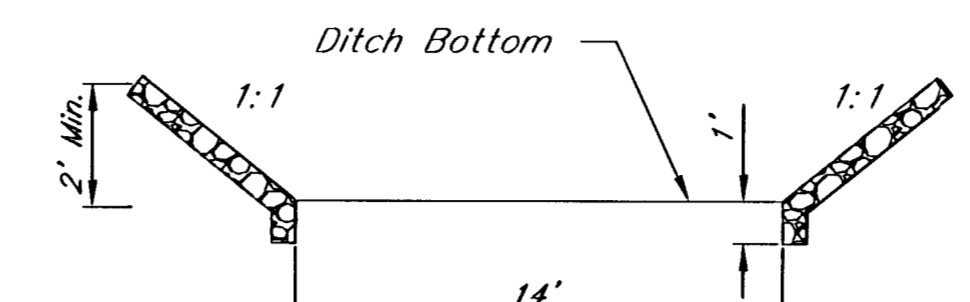
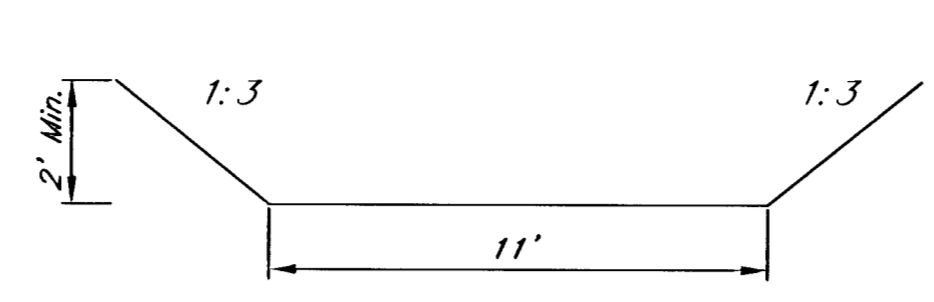
BENCHMARKS:

BM#1 City disc on the SW corner traffic signal base on the NE corner of the intersection of Harry St. and Greenwich Rd. Elev. = 1343.49 USGS

BM#2 "C" cut on the SW corner of the N. Headwall at the east end of pond on the W. side of Greenwich Rd., approx. 1000' S. of Harry St. Elev. = 1341.87 USGS

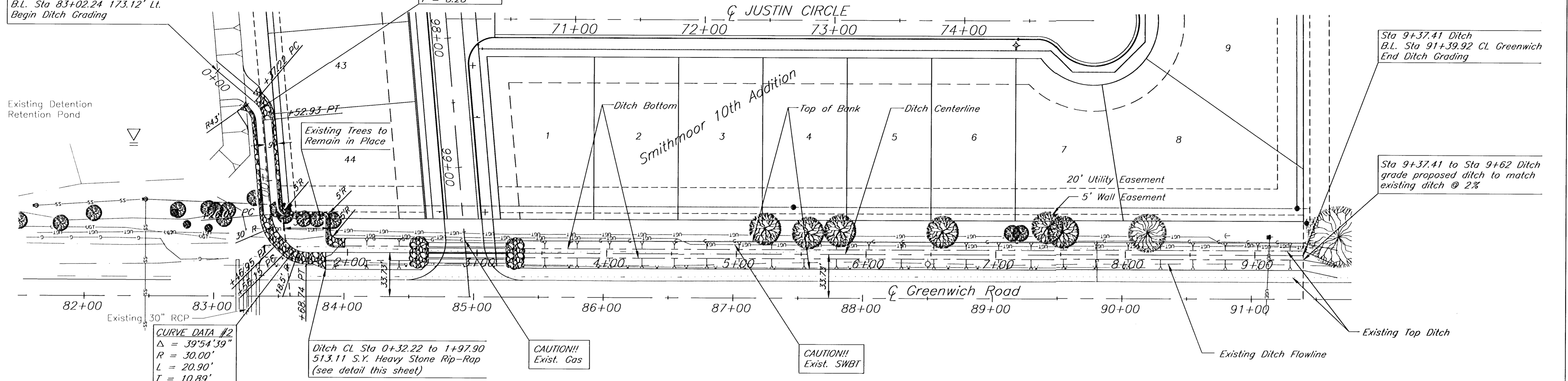


CURVE DATA #1
 $\Delta = 45^{\circ}0'0''$
 $R = 20.00'$
 $L = 15.71'$
 $T = 8.28'$



Sta 0+00 Ditch
 B.L. Sta 83+02.24 173.12' Lt.
 Begin Ditch Grading

Existing Detention Retention Pond



CURVE DATA #2
 $\Delta = 39^{\circ}54'39''$
 $R = 30.00'$
 $L = 20.90'$
 $T = 10.89'$

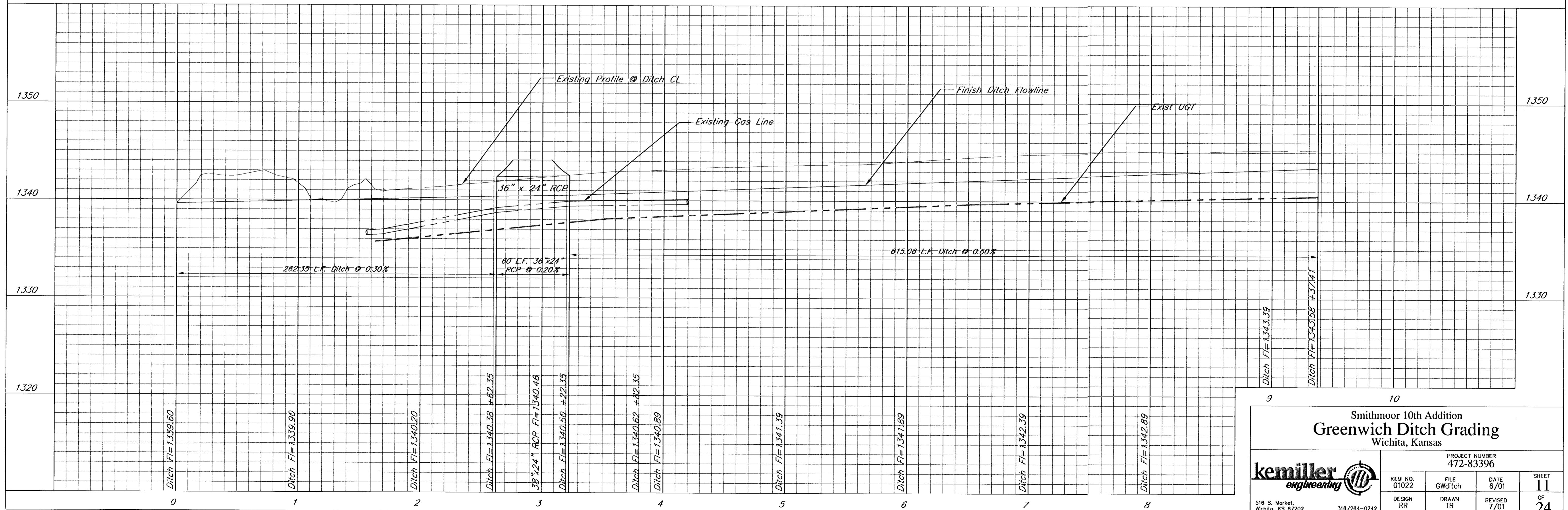
Ditch CL Sta 0+32.22 to 1+97.90
 513.11 S.Y. Heavy Stone Rip-Rap
 (see detail this sheet)

CAUTION!!
 Exist. Gas

CAUTION!!
 Exist. SWBT

Sta 9+37.41 Ditch
 B.L. Sta 91+39.92 CL Greenwich
 End Ditch Grading

Sta 9+37.41 to Sta 9+62 Ditch
 grade proposed ditch to match
 existing ditch @ 2%



Smithmoor 10th Addition
Greenwich Ditch Grading
 Wichita, Kansas

PROJECT NUMBER
 472-83396

| | | | | |
|--|---------------|--------------|--------------|----------|
| | KEM NO. 01022 | FILE GWditch | DATE 6/01 | SHEET 11 |
| | DESIGN RR | DRAWN TR | REVISED 7/01 | OF 24 |

516 S. Market, Wichita, KS 67202 318/284-0242