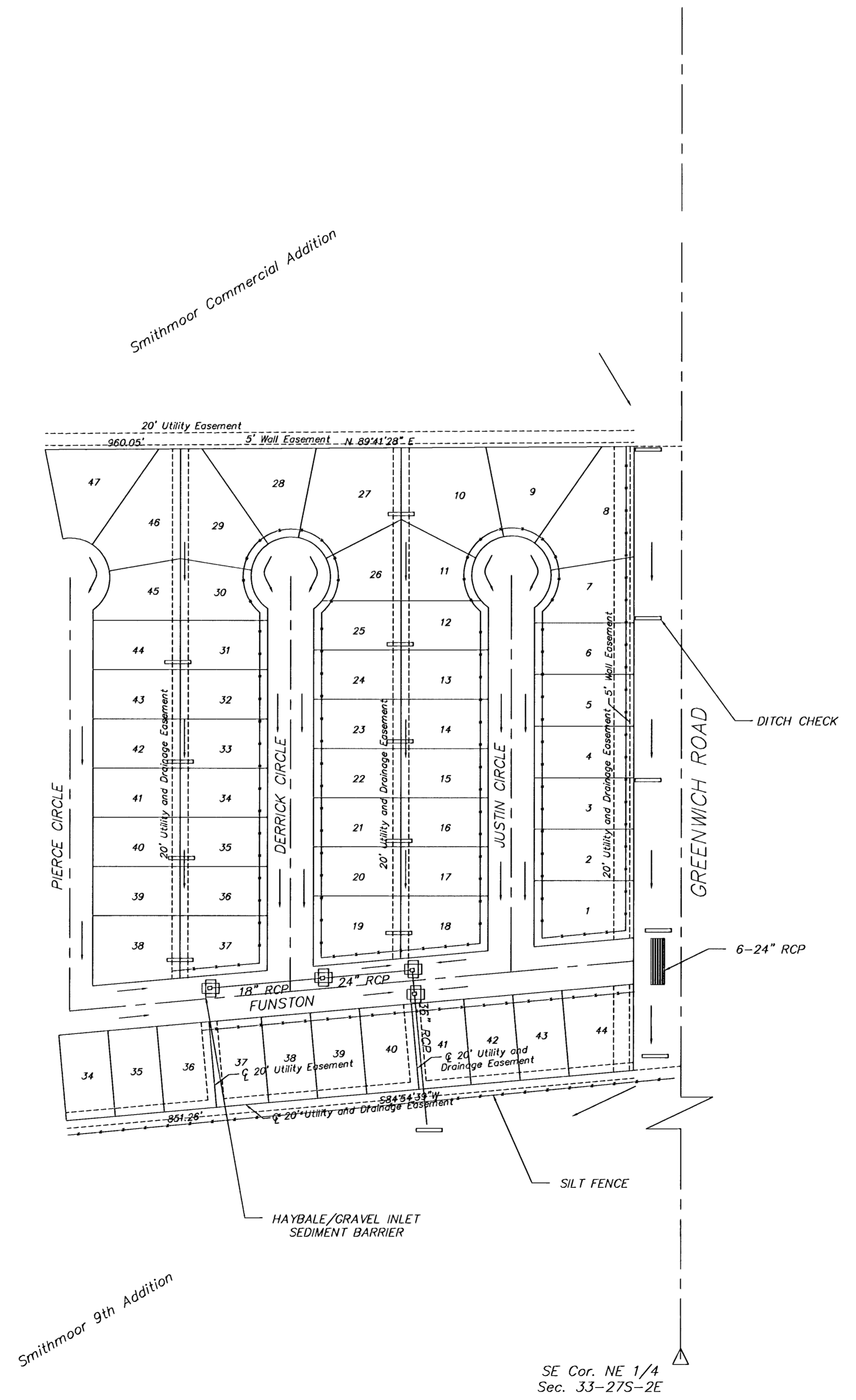
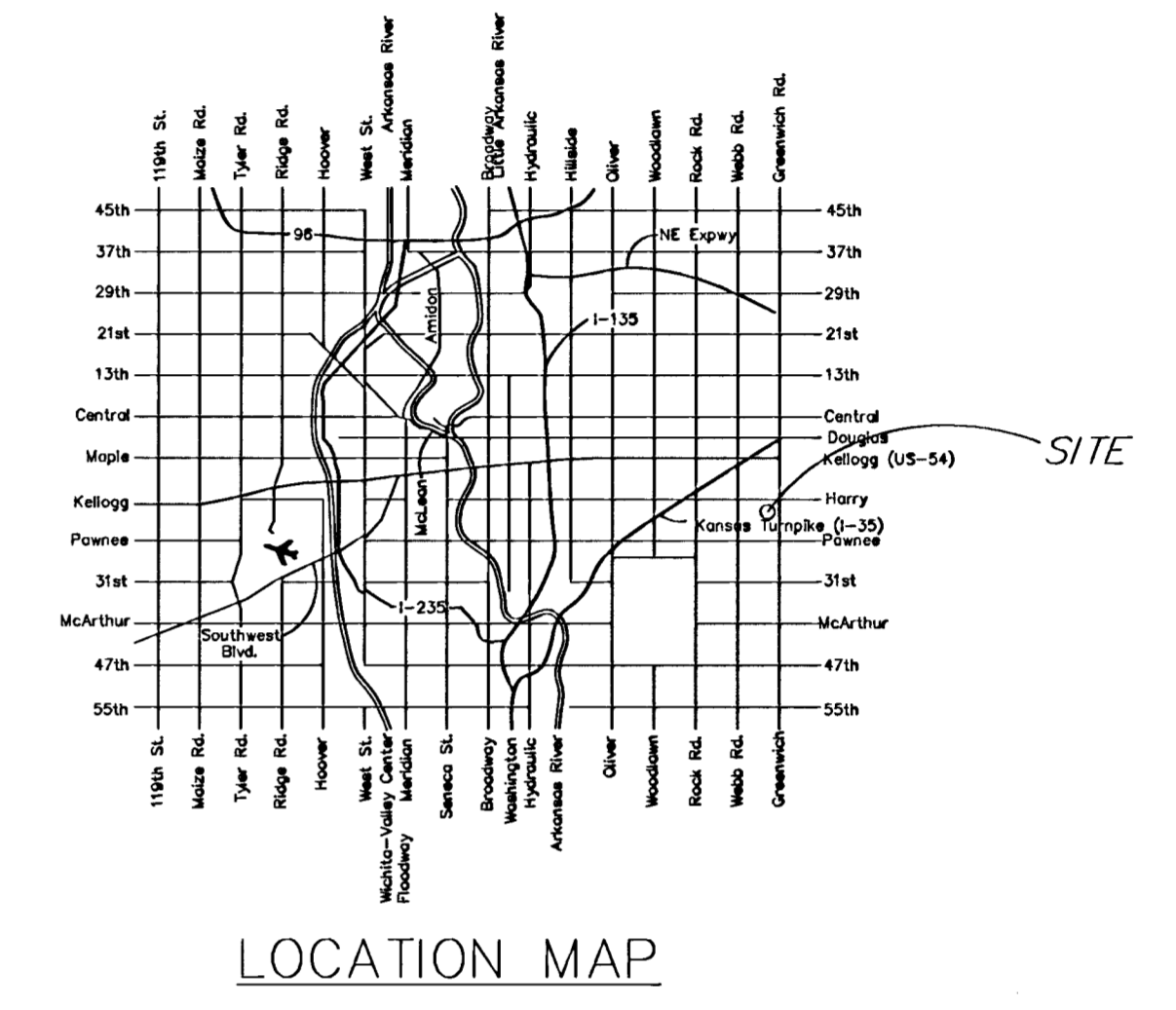
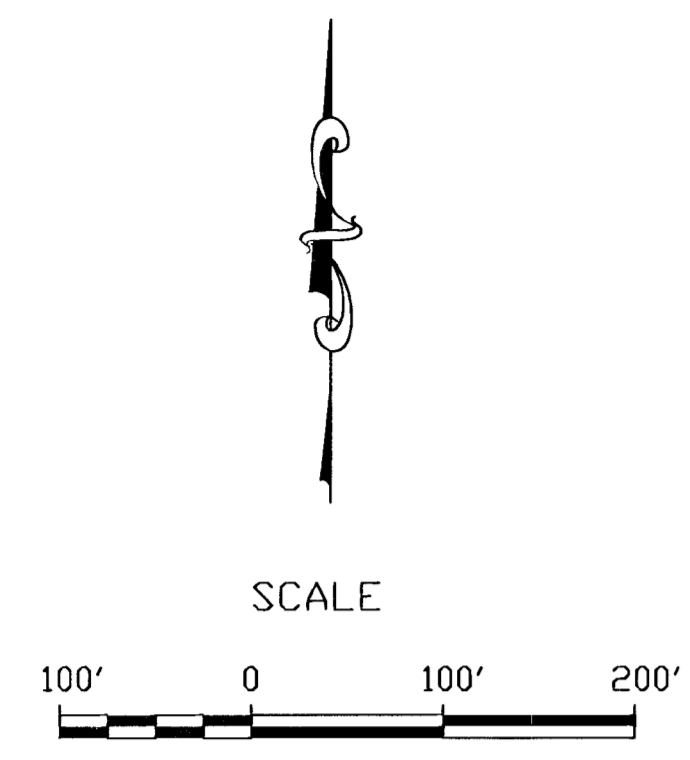


EROSION CONTROL PLAN FOR  
SMITHMOOR 10TH ADDITION  
TO SEDGWICK COUNTY, KANSAS



AREA INLETS WILL HAVE HAY BALE SEDIMENT BARRIERS BEFORE AND AFTER CONSTRUCTION OF STORMSEWER. ALL CURB INLETS TO HAVE HAY BALE SEDIMENT BARRIERS PRIOR TO CONSTRUCTION OF PAVEMENT, AND GRAVEL INLET BARRIERS AFTER CONSTRUCTION OF PAVEMENT UNTIL PROJECT COMPLETION.

Smithmoor 10th Addition <b>Erosion Control Plan</b> Wichita, Kansas			
PROJECT NUMBER 472 83396			
	KEM NO. 01022	FILE erosion	DATE 8/01
	DESIGN KM	DRAWN TR	REVISED
			SHEET <b>14A</b> OF 24
516 S. Market, Wichita, KS 67202      316/264-0242			