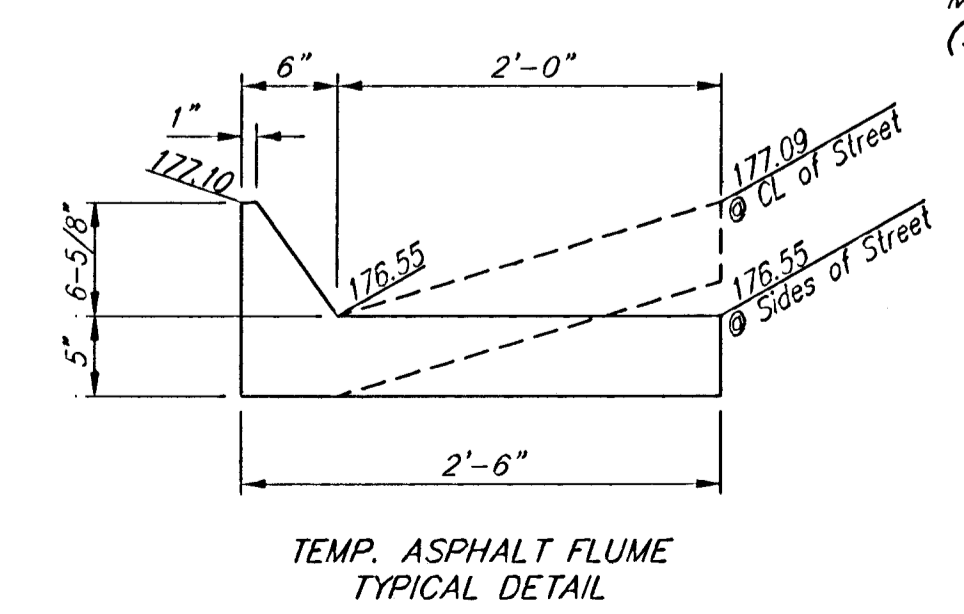
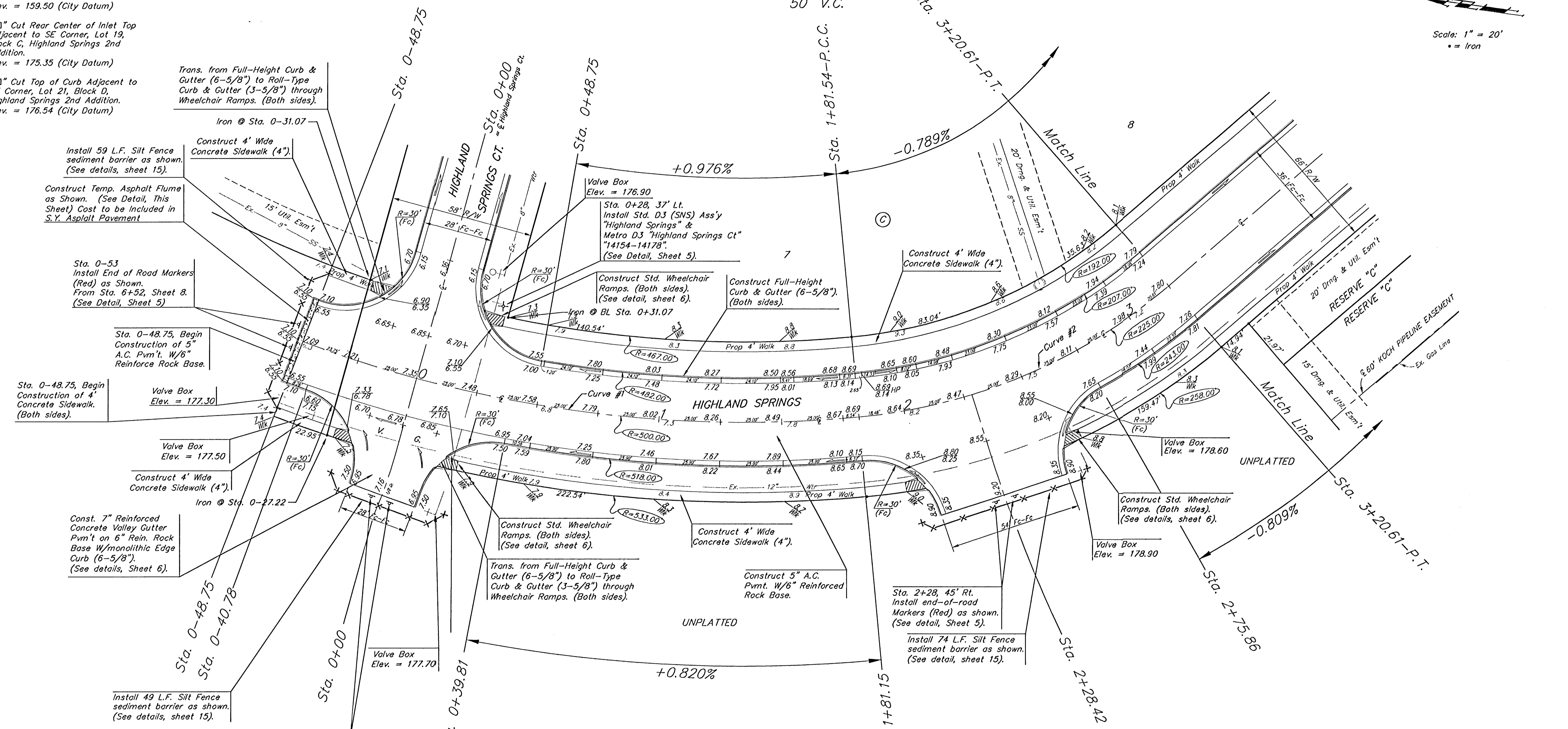
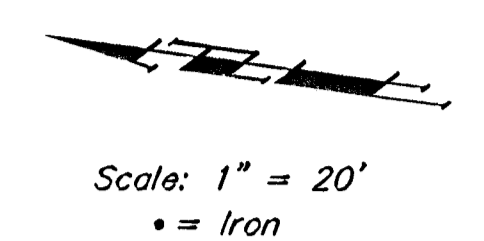


**BENCHMARKS:**  
 City of Wichita Benchmark  
 Disk 32.6' N and 24.5' E  
 of Intersection of 135th St. W.  
 and Central. 39.5' NE of Iron at  
 Section Corner.  
 Elev. = 159.50 (City Datum)

"□" Cut Rear Center of Inlet Top  
 Adjacent to SE Corner, Lot 19,  
 Block C, Highland Springs 2nd  
 Addition.  
 Elev. = 175.35 (City Datum)

"□" Cut Top of Curb Adjacent to  
 SE Corner, Lot 21, Block D,  
 Highland Springs 2nd Addition.  
 Elev. = 176.54 (City Datum)

HIGHLAND SPRINGS 2ND ADDITION P.V.I.  
 Elev. = 178.80  
 50' V.C.



Curve #1  
 Curve Data Based on Centerline  
 Rad. = 500' Delta = 26° 23' 23" Tangent = 117.23'  
 Arc = 230.29' L.C. = 228.26' Def/Fl. = 3.43780 Min.

Station	Arc	FACE CHORD LENGTHS		Defl.	T. Defl.
		8' Lt.	8' Rt.		
0+48.75	-	-	-	0'00.00"	0'00.00"
0+40.78	7.97'	7.56"	8.38"	0'27.24"	0'27.24"
0+25.00	15.78'	14.96"	16.60"	0'54.15"	1'21.39"
0+00.00	23.00'	23.70"	26.30"	1'25.57"	2'47.36"
0+25.00	25.00'	23.70"	26.30"	1'25.57"	4'13.32"
0+39.81	14.81'	14.04"	15.58"	0'50.53"	5'04.27"
0+48.75	8.94'	8.48"	9.40"	0'30.44"	5'35.11"
0+50.00	1.25'	1.19"	1.32"	0'04.18"	5'39.59"
0+75.00	25.00'	23.70"	26.30"	1'25.57"	7'05.26"
1+00.00	25.00'	23.70"	26.30"	1'25.57"	8'31.22"
1+25.00	25.00'	23.70"	26.30"	1'25.57"	9'57.19"
1+50.00	25.00'	23.70"	26.30"	1'25.57"	11'23.16"
1+75.00	25.00'	23.70"	26.30"	1'25.57"	12'49.13"
1+81.15	6.15'	5.83"	6.47"	0'21.08"	13'10.21"
1+81.54	0.36'	0.34"	0.38"	0'01.21"	13'11.42"

Curve #2  
 Curve Data Based on Centerline  
 Rad. = 225' Delta = 35° 24' 50" Tangent = 71.84'  
 Arc = 139.07' L.C. = 136.87' Def/Fl. = 7.63944 Min.

Station	Arc	FACE CHORD LENGTHS		Defl.	T. Defl.
		8' Lt.	8' Rt.		
1+81.54	-	-	-	0'00.00"	0'00.00"
2+00.00	18.64'	18.32"	20.59"	0'20.00"	2'21.01"
2+25.00	25.00'	22.10"	27.89"	3'11.00"	5'32.01"
2+50.00	25.00'	22.10"	27.89"	3'10.59"	8'43.00"
2+75.00	25.00'	22.10"	27.89"	3'10.59"	11'53.59"
2+75.86	0.86'	0.76"	0.96"	0'06.34"	12'00.33"
3+00.00	25.00'	22.10"	27.88"	3'04.25"	15'04.59"
3+20.61	20.61'	18.22"	22.98"	2'37.27"	17'42.25"

HIGHLAND SPRINGS 2ND ADDITION - PHASE II  
**HIGHLAND SPRINGS**  
 STA 0+48.75 TO STA 3+20.61

**BAUGHMAN COMPANY P.A.**  
 ENGINEERING, SURVEYING, & PLANNING  
 316-282-7271 • 315 ELLIS • WICHITA, KANSAS 67211

PROJECT NUMBER  
**472-83143**

DESIGN BP/TMG DRAWN GVK APPROVED DATE 2-13-02 SCALE Noted SHEET 7 OF 32