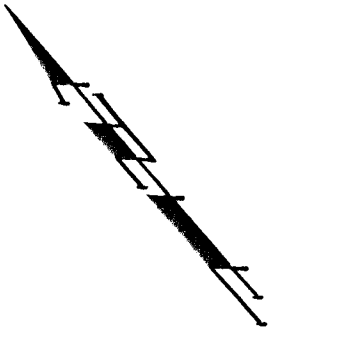


**BENCHMARKS:**  
 City of Wichita Benchmark  
 Disk 32.6' N and 24.5' E  
 of Intersection of 135th St. W.  
 and Central. 39.5' NE of Iron at  
 Section Corner.  
 Elev. = 159.50 (City Datum)

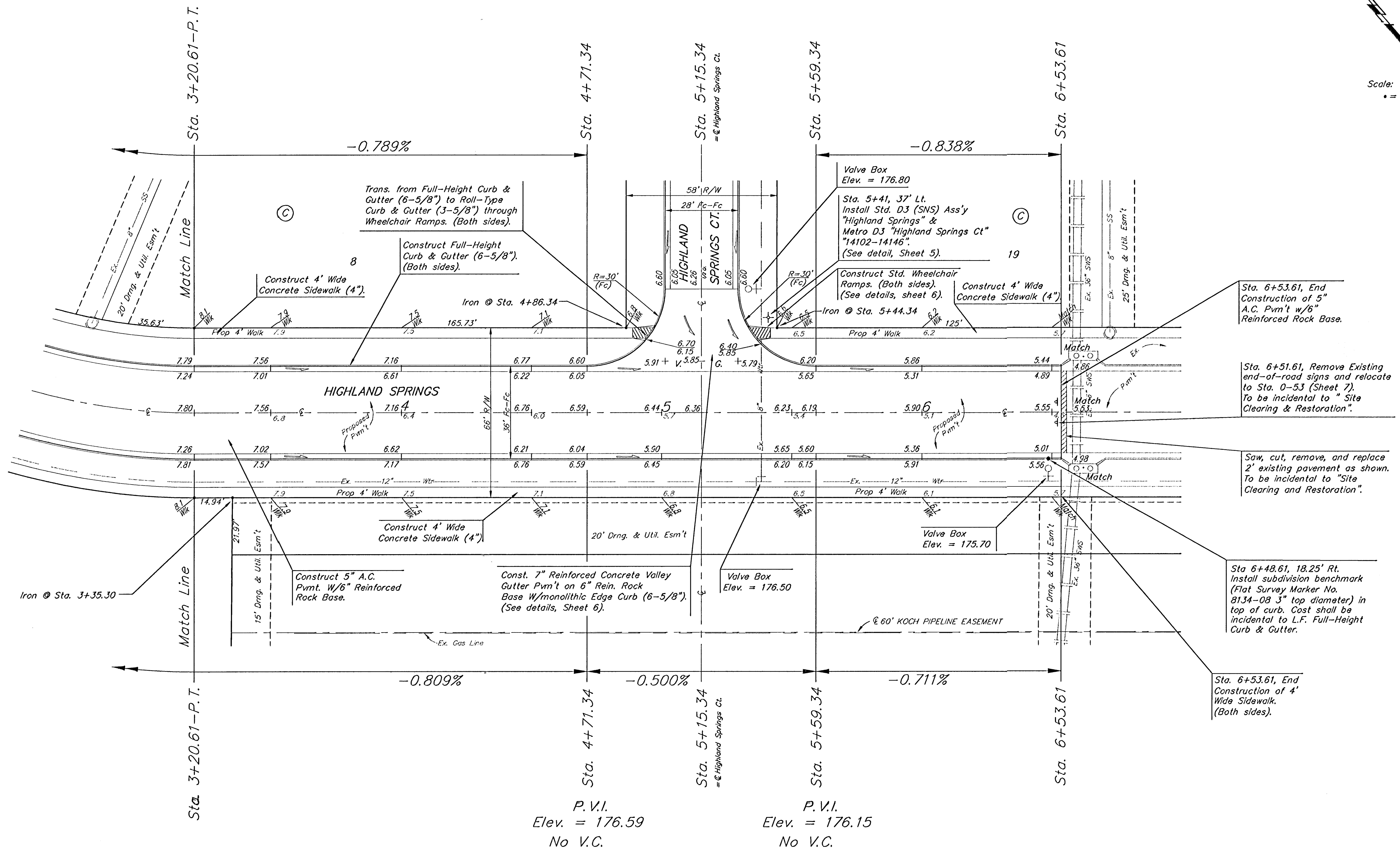
"□" Cut Rear Center of Inlet Top  
 Adjacent to SE Corner, Lot 19,  
 Block C, Highland Springs 2nd  
 Addition.  
 Elev. = 175.35 (City Datum)

"□" Cut Top of Curb Adjacent to  
 SE Corner, Lot 21, Block D,  
 Highland Springs 2nd Addition.  
 Elev. = 176.54 (City Datum)

HIGHLAND SPRINGS 2ND ADDITION



Scale: 1" = 20'  
 • = Iron



Sta. 6+53.61, End  
 Construction of 5"  
 A.C. Pvm't w/6"  
 Reinforced Rock Base.

Sta. 6+51.61, Remove Existing  
 end-of-road signs and relocate  
 to Sta. 0-53 (Sheet 7).  
 To be incidental to "Site  
 Clearing & Restoration".

Saw, cut, remove, and replace  
 2' existing pavement as shown.  
 To be incidental to "Site  
 Clearing and Restoration".

Sta 6+48.61, 18.25' Rt.  
 Install subdivision benchmark  
 (Flat Survey Marker No.  
 8134-08 3" top diameter) in  
 top of curb. Cost shall be  
 incidental to L.F. Full-Height  
 Curb & Gutter.

Sta. 6+53.61, End  
 Construction of 4'  
 Wide Sidewalk.  
 (Both sides).

HIGHLAND SPRINGS 2ND ADDITION

HIGHLAND SPRINGS 2ND ADDITION - PHASE II  
**HIGHLAND SPRINGS**  
 STA 3+20.61 TO STA 6+53.61

**BAUGHMAN COMPANY P.A.**  
 ENGINEERING, SURVEYING, & PLANNING  
 316-262-7271 • 315 ELLIS • WICHITA, KANSAS 67211

PROJECT NUMBER  
**472-83143**

DESIGN: BP/IMG    DRAWN: GNY    APPROVED:    DATE: 2-13-02    SCALE: Noted

SHEET **8** OF **32**