

BENCHMARKS:
 City of Wichita Benchmark
 Disk 32.6' N and 24.5' E
 of Intersection of 135th St. W.
 and Central. 39.5' NE of Iron at
 Section Corner.
 Elev. = 159.50 (City Datum)

"□" Cut Rear Center of Inlet Top
 Adjacent to SE Corner, Lot 19,
 Block G, Highland Springs 2nd
 Addition.
 Elev. = 175.35 (City Datum)

"□" Cut Top of Curb Adjacent to
 SE Corner, Lot 21, Block D,
 Highland Springs 2nd Addition.
 Elev. = 176.54 (City Datum)

P.V.I.
 Elev. = 178.00
 44.70' V.C.

HIGHLAND SPRINGS 2ND ADDITION

Curve #5
 Curve Data Based on Centerline
 Rad. = 400' Delta = 42° 51' 53" Tangent = 157.02'
 Arc = 299.25' L.C. = 292.32' Def/Ft. = 4.29722 Min.

Station	Arc	FACE CHORD LENGTHS		Defl.	T. Defl.
		8' Lt.	8' Rt.		
0+00.00	-	-	-	0°00'00"	0°00'00"
0+25.00	25.00'	23.43'	26.56'	1°47'26"	1°47'26"
0+50.00	25.00'	23.43'	26.56'	1°47'26"	3°34'52"
0+75.00	25.00'	23.43'	26.56'	1°47'26"	5°22'17"
1+00.00	25.00'	23.43'	26.56'	1°47'26"	7°09'43"
1+25.00	25.00'	23.43'	26.56'	1°47'26"	8°57'09"
1+50.00	25.00'	23.43'	26.56'	1°47'26"	10°44'35"
1+75.00	25.00'	23.44'	26.56'	1°47'26"	12°32'01"
1+77.64	2.64'	2.64'	2.80'	0°11'20"	12°43'21"
1+81.34	3.70'	3.47'	3.93'	0°15'54"	12°59'15"
2+00.00	18.66'	17.49'	19.82'	1°20'12"	14°19'27"
2+15.31	15.31'	14.35'	16.21'	1°05'47"	15°25'14"
2+25.00	9.69'	23.43'	26.56'	0°41'38"	16°06'52"
2+49.17	24.17'	22.67'	23.68'	1°43'52"	17°50'44"
2+50.00	0.83'	0.89'	0.89'	0°03'34"	17°54'18"
2+52.74	2.74'	2.51'	2.91'	0°11'47"	18°06'05"
2+75.00	22.26'	20.86'	23.65'	1°35'39"	19°41'44"
2+99.25	24.25'	22.73'	25.76'	1°44'12"	21°25'56"

Scale: 1" = 20'
 • = Iron

Install 58 L.F. Silt Fence
 sediment barrier as shown.
 (See detail sheet 15).

Sta. 0-20.20, Begin
 Construction of 5" A.C.
 Pvm't W/5" Reinforced
 Rock Base.

Sta. 0-22
 Install End of Road Markers
 (Red) as Shown from Sta.
 6+09.20 (Sheet 12).
 To be incidental to "Site
 Clearing & Restoration".
 (See Detail, Sheet 5)

Const. Sediment Barriers.
 (See Details, Sheet 15).

Construct Std. Type 1A
 Inlet Hookups. (Both sides).

Valve Box
 Elev. = 178.20

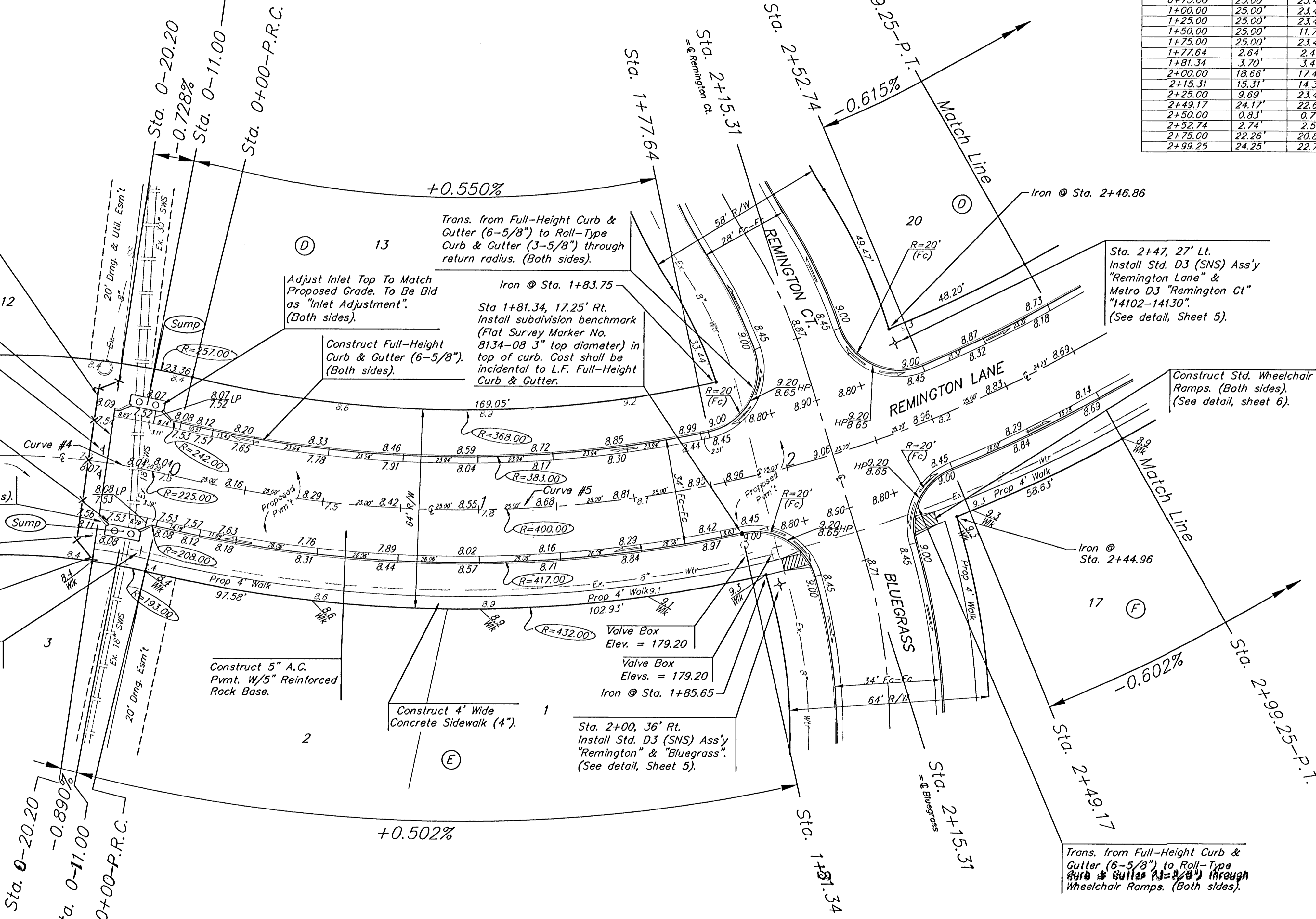
Sta. 0-20.20, Begin
 Construction of 4' Wide
 Concrete Sidewalk (4").

Valve Box
 Elev. = 178.20

P.V.I.
 Elev. = 178.00
 48.72' V.C.

Curve #4
 Curve Data Based on Centerline
 Rad. = 225' Delta = 5° 03' 40" Tangent = 10.11'
 Arc = 20.2' L.C. = 20.20' Def/Ft. = 7.64026 Min.

Station	Arc	FACE CHORD LENGTHS		Defl.	T. Defl.
		8 Lt.	8 Rt.		
0+00.00	-	-	-	0°00'00"	0°00'00"
0-20.20	20.20	22.44'	17.95'	2°34'20"	2°34'20"



HIGHLAND SPRINGS 2ND ADDITION
REMINGTON LANE
 STA 0-20.20 TO STA 2+99.25

BAUGHMAN COMPANY P.A.
 ENGINEERING, SURVEYING, & PLANNING
 316-292-7271 • 315 ELLIS • WICHITA, KANSAS 67211

PROJECT NUMBER
472-83143

DESIGN: BP/IMG DRAWN: APPROVED: DATE: 2-13-02 SCALE: Noted SHEET: **11** OF **32**