

HIGHLAND SPRINGS 2ND ADDITION

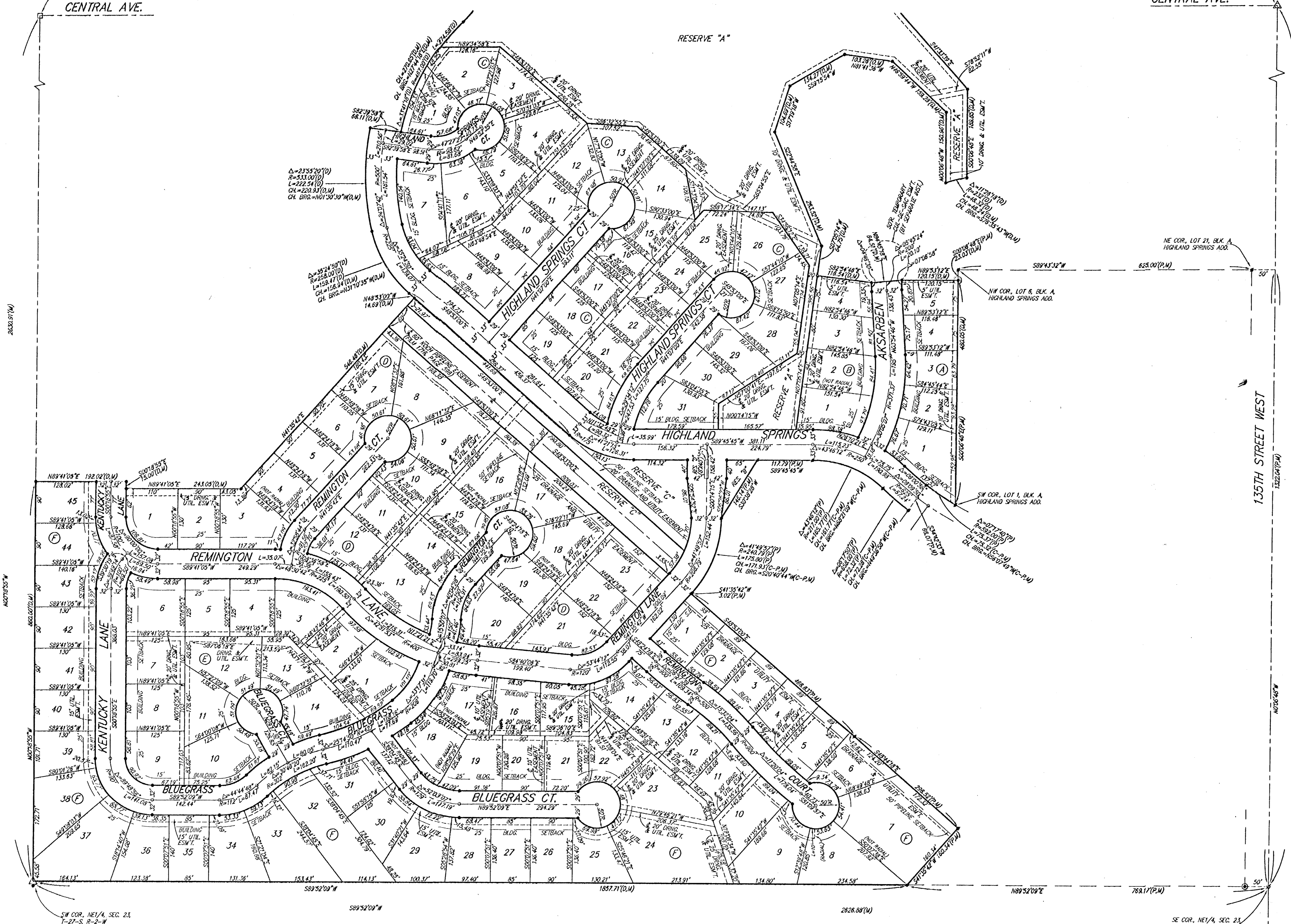
WICHITA, SEDGWICK COUNTY, KANSAS

NE COR. NE 1/4, SEC. 23
T-27-S, R-2-W

NW COR. NE 1/4, SEC. 23
T-27-S, R-2-W

CENTRAL AVE.

CENTRAL AVE.



LEGEND:

- = #4 REBAR W/ "BAUGHMAN" CAP (FOUND)
 - = #4 REBAR W/ "BAUGHMAN" CAP (SET)
 - ▲ = STONE W/ #4 REBAR ON S. SIDE (FOUND)
 - △ = 1/2" IRON OVER & STONE (FOUND)
 - ⊖ = 3/4" IRON (FOUND)
 - ⊙ = #4 REBAR W/ "T.L.S.L." CAP (FOUND)
 - = STONE W/ #5 REBAR ON W. SIDE (FOUND)
- (M) = MEASURED
(D) = DESCRIBED
(P) = PLATTED
(C-P) = CALCULATED PER PLATTED INFO.

MINIMUM BUILDING PAD ELEVATION FOR LOWEST OPENING TO STRUCTURES			
BLOCK	LOTS	ELEVATION (CITY DATUM)	ELEVATION (NGVD)
B	1,2,3,4	168.0	1358.4
C	2,3,4,7,13,14,15,25, 28,27,28,29,30,31	168.0	1358.4
F	6,7,8	162.0	1348.4

BENCHMARK:
135TH ST. W. & CENTRAL
CITY OF WICHITA BENCHMARK DISC - NE COR. INTERSECTION
328' N. & 24.5' E. OF C. SOUTH 39.5' NE OF IRON AT SEC. COR.
ELEV. = 159.50 CITY DATUM
(1348.90 M.S.L.)

NOTE:
A MASTER GRADING PLAN FOR DRAINAGE HAS BEEN DEVELOPED FOR THIS SUBDIVISION AND IS ON FILE WITH THE CITY OF WICHITA, KANSAS. ALL DRAINAGE EASEMENTS, RIGHTS-OF-WAY, OR RESERVES SHALL REMAIN AT ESTABLISHED GRADES OR AS INDICATED WITH THE APPROVAL OF THE CITY ENGINEER OF THE CITY OF WICHITA, KANSAS. NO OBSTRUCTIONS WHICH IMPEDE THE FLOW OF THIS DRAINAGE SYSTEM SHALL BE ALLOWED.