

CITY OF WICHITA, KANSAS

MICHAEL E. LINDEBAK, P.E., CITY ENGINEER

STREET IMPROVEMENTS

EDGEMOOR DRIVE - FROM THE S.L. OF LOT 97, BLOCK 2 TO THE S.E. LINE OF LOT 84, BLOCK 2
 PEMBROOK CIRCLE - FROM THE E.L. OF EDGEMOOR DRIVE TO THE N.W. LINE OF LOT 85, BLOCK 2,
 INCLUDING THE TURN-AROUND

IN
THE COURTS II
 CITY OF WICHITA PROJECT NO. 472-83382
 OCA NO. 765695

INDEX OF SHEETS

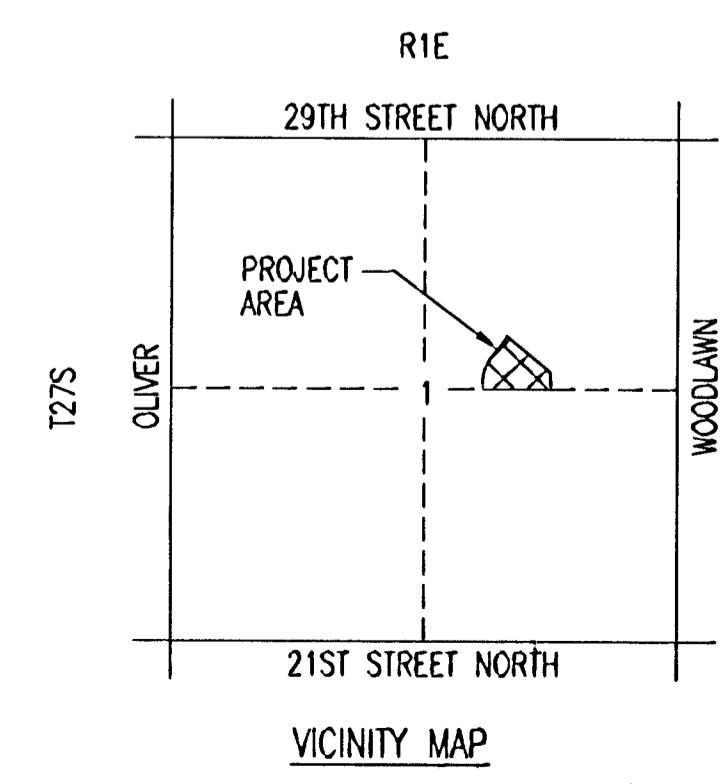
1. TITLE SHEET
2. PLAT
3. TYPICAL SECTIONS
- 4.-5. PAVING PLANS - PEMBROOK PLACE
6. PAVING PLAN - PEMBROOK
7. PAVING PLAN - EDGEMOOR DRIVE
8. PAVING PLAN - PEMBROOK COURT
9. PLAN AND PROFILE - SWS LINE NOS. 1 AND 2
10. FOUR CORNER GRADING PLAN
11. MISCELLANEOUS DRAINAGE DETAILS
12. STD. TYPE 1A CURB INLET DETAILS
13. VALLEY GUTTER PLAN
14. VALLEY GUTTER DETAILS
15. STD. DRIVE ENTRANCE DETAILS
- 16.-19. EROSION CONTROL DETAILS
20. MANHOLE FRAME AND COVER DETAILS
21. SIGNING DETAILS
- 22.-33. CROSS SECTIONS

PROJECT SURVEY CONTROL

- BM #1: CHISELED "3" ON THE NORTHEAST CORNER OF A CONCRETE PAD FOR ELEC. BOX 18' NORTH AND 27' WEST OF THE SOUTHWEST CORNER OF LOT 98, BLOCK 2. ELEV.=176.765
- BM #2: "I" POST DRIVEN FLUSH WITH THE GROUND. 42' NORTH AND 52' WEST OF THE NORTHERN MOST CORNER OF LOT 80, BLOCK 2 ON THE TOP OF THE EAST FLOODWAY SLOPE. ELEV.=170.89
- BM #3: "I" POST DRIVEN FLUSH WITH THE GROUND. 47' NORTH AND 18' WEST OF THE NORTHEAST CORNER OF LOT 87, BLOCK 2 ON TOP OF THE SOUTH FLOODWAY SLOPE. ELEV.=172.98
- BM #4: #4 BAR 36" LONG DRIVEN FLUSH WITH THE GROUND. 11' NORTH AND 13' WEST OF THE SOUTHWEST CORNER OF LOT 4, BLOCK 3 IN RESERVE "D". ELEV.=178.34
- BM C.O.W.#1: EDGEMOOR AND 21ST STREET NORTH C.O.W. BRASS DISC ON THE NORTHWEST CORNER OF THE RCB ON 21ST STREET NORTH BETWEEN EDGEMOOR AND RIDGEWOOD. ELEV.=195.64
- BM C.O.W.#2: EDGEMOOR AND MAINSCATE C.O.W. BRASS DISC SOUTHWEST CORNER INTERSECTION ON THE TOP OF HEADWALL AT THE SOUTHEAST CORNER OF A DOUBLE WIDE RCB. ELEV.=181.01

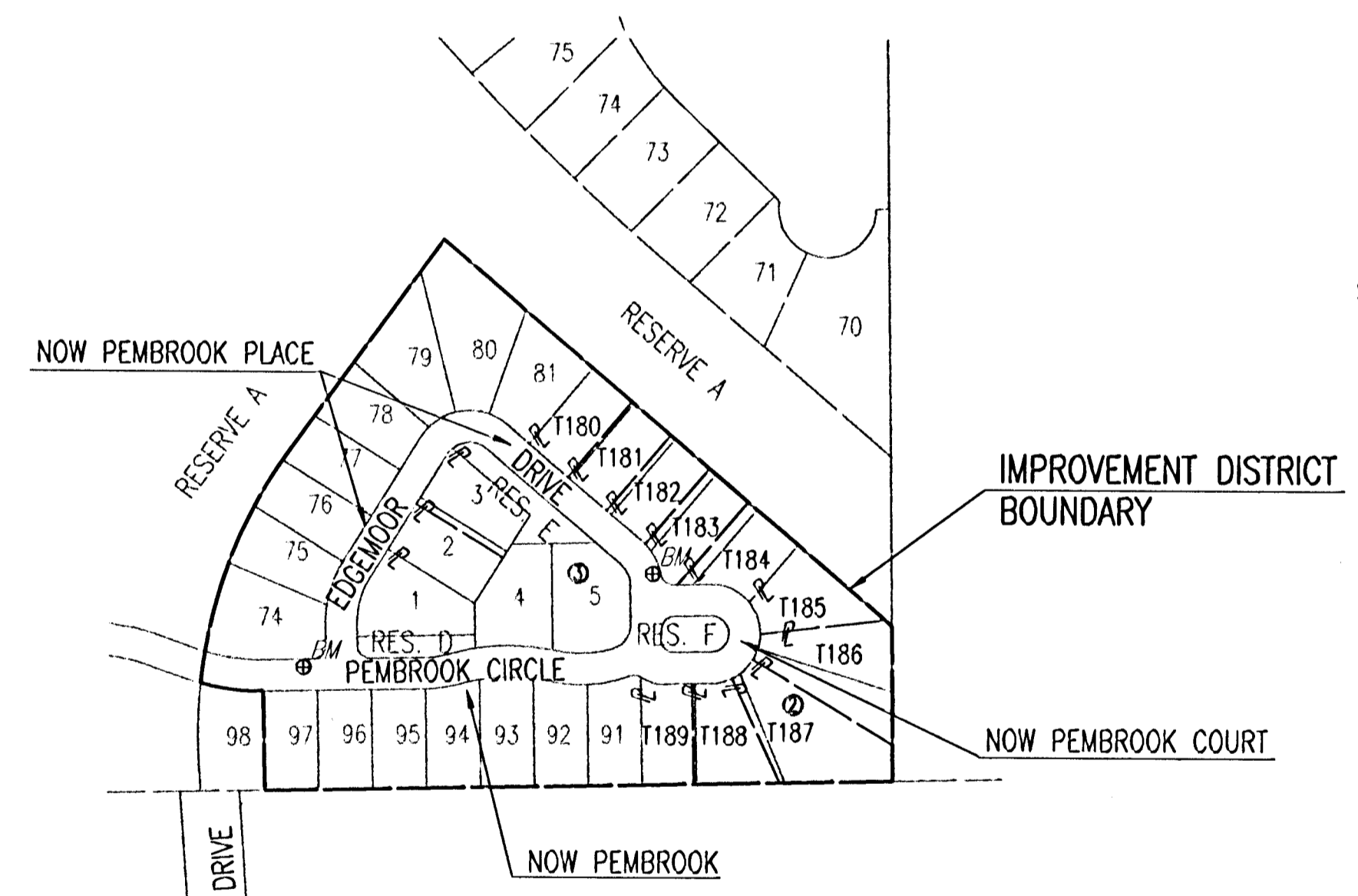
EARTHWORK

EXCAVATION 7,400 CU. YDS.
 COMPACTED FILL 0 CU. YDS.
 PROJECT LENGTH = 1408.77 LIN. FT.



NO.	STREET AND STATION	FROM C.	DESCRIPTION	ELEVATION
1	PEMBROOK PLACE STA. 15+39.94	14' LT.	TOP OF EAST CURB AT NORTH END RETURN OF PEMBROOK COURT	
2	PEMBROOK STA. 19+52.32	14' RT.	TOP OF NORTH CURB AT WEST RETURN OF STREET OF PEMBROOK PLACE	

THE COST OF THE BENCH MARK DISC, INCLUDING INSTALLATION, SHALL BE INCIDENTAL TO THE CURB.



SCALE: 1" = 150'

DRAINAGE BOOKED
 1-10-03
 MCB
 C-238

GENERAL NOTES

UNDERGROUND UTILITY SERVICE LINES AND OVERHEAD UTILITY POLE LINES ARE TO BE ADJUSTED AS NECESSARY BY OTHERS PRIOR TO CONSTRUCTION UNLESS THE PLANS SPECIFICALLY CALL FOR THEIR ADJUSTMENT BY THE CONTRACTOR. EXISTING UTILITIES AND THEIR LOCATION, AS SHOWN ON THE PLANS, REPRESENT THE BEST INFORMATION OBTAINABLE FOR DESIGN. LOCATION INFORMATION HAS BEEN OBTAINED FROM THE VARIOUS UTILITY COMPANIES AND IS EITHER FROM COMPANY RECORD DRAWINGS OR COMPANY PROVIDED FIELD LOCATIONS. THE CONTRACTOR WILL BE REQUIRED TO WORK AROUND EXISTING UTILITIES WITHIN THE RIGHT-OF-WAY WHICH DO NOT CONFLICT WITH PROPOSED CONSTRUCTION.

TREES AND SHRUBS IN PUBLIC RIGHT-OF-WAY WHICH ARE IN DIRECT CONFLICT WITH PROPOSED NEW CONSTRUCTION SHALL BE REMOVED BY THE CONTRACTOR WITH THE ENGINEER'S APPROVAL. TREES AND SHRUBS WHICH ARE NOT IN DIRECT CONFLICT WITH PROPOSED NEW CONSTRUCTION SHALL BE SAVED AND PROTECTED FROM DAMAGE.

RUBBLE FROM THE REMOVAL OF MISCELLANEOUS STRUCTURES SHALL BE DISPOSED OF ON SITES TO BE PROVIDED BY THE CONTRACTOR AND APPROVED AS NOTED BELOW.

ALL DISPOSAL SITES MUST BE APPROVED BY THE KANSAS DEPARTMENT OF HEALTH AND ENVIRONMENT. MATERIAL EITHER STOCKPILED OR DISPOSED OF IN A FLOOD PLAIN WOULD REQUIRE A KANSAS STATE BOARD OF AGRICULTURE PERMIT. ANY MATERIAL DUMPED IN WATERS OF THE UNITED STATES OR WETLANDS IS SUBJECT TO U.S. CORPS OF ENGINEERS PERMITTING REGULATIONS. ANY MATERIAL BURIED OR STOCKPILED BEYOND APPROVED CONSTRUCTION LIMITS WOULD REQUIRE ADDITIONAL ARCHEOLOGICAL INVESTIGATIONS UNLESS BURIED IN A PREVIOUSLY APPROVED BORROW LOCATION.

CONTRACTOR SHALL SATISFY HIMSELF OF SURFACE AND SUBSURFACE CONDITIONS PRIOR TO BIDDING.

TEMPORARY SURFACING MATERIAL (ROCK, ASPHALT, ETC.) MAY HAVE BEEN PLACED WITHIN STREET RIGHTS-OF-WAY FOR HAUL ROADS AND TEMPORARY ACCESS. CONTRACTOR SHALL FIELD VERIFY EXISTING CONDITIONS TO DETERMINE EXTENT, IF ANY, OF SUCH SURFACING. CONTRACTOR SHALL REMOVE SAID TEMPORARY SURFACING IN THE SAME MANNER AS NOTED ABOVE FOR RUBBLE. THIS REMOVAL SHALL BE SUBSIDIARY TO "EXCAVATION".

CONTRACTOR SHALL PROVIDE A MINIMUM FORTY-EIGHT (48) HOUR ADVANCE NOTICE (EXCLUDING WEEKENDS AND HOLIDAYS) PRIOR TO BEGINNING ANY EXCAVATION, TO KANSAS ONE-CALL SYSTEM, A UTILITY LOCATION SERVICE, AT (316) 687-2470 TO REQUEST THE FOLLOWING UTILITY COMPANIES TO LOCATE ALL EXISTING LINES WITHIN THE PROJECT AREA: K.G.S. GAS, K.G.E. ELECTRIC, SOUTHWESTERN BELL TELEPHONE, COX COMMUNICATIONS, CITY OF WICHITA SEWER MAINTENANCE AND CITY OF WICHITA WATER DEPARTMENT.

THE CONTRACTOR SHALL BE RESPONSIBLE FOR PRESERVING PROPERTY IRONS. THE CONTRACTOR WILL BE REQUIRED TO RE-ESTABLISH ANY PROPERTY IRONS WHICH ARE DAMAGED OR DESTROYED BY HIS CONSTRUCTION OPERATIONS. SUCH IRONS SHALL BE RE-ESTABLISHED BY A LICENSED LAND SURVEYOR IN ACCORDANCE WITH STATE LAWS.

THE WATER DEPARTMENT SHALL FIELD LOCATE WATER VALVES ONE TIME DURING CONSTRUCTION WHEN REQUESTED BY THE CONTRACTOR. IT SHALL BE THE CONTRACTOR'S RESPONSIBILITY TO PRESERVE SUCH FIELD LOCATIONS DURING THE CONSTRUCTION PROCESS. WATER VALVES, WATER VALVE BOXES OR FIRE HYDRANTS DAMAGED DURING CONSTRUCTION SHALL BE REPAIRED BY THE CONTRACTOR AT HIS OWN EXPENSE.

THE CONTRACTOR SHALL ADJUST WATER VALVE BOXES AS DIRECTED BY THE ENGINEER. THIS WORK TO BE SUBSIDIARY TO OTHER BID ITEMS.

INLET HOOKUPS SHALL BE BID PER EACH REGARDLESS OF INLET SIZE.

NO MORE THAN 3 DRIVES 126 FEET IN WIDTH, OR EQUIVALENT COMBINATIONS THEREOF, ARE TO BE CONSTRUCTED WITH THIS PROJECT.

THE CONTRACTOR SHALL SEED, FERTILIZE AND MULCH ALL AREAS DISTURBED BY HIS OPERATIONS WITHIN RESERVE A AND RESERVES D, E AND F TO CITY OF WICHITA SPECIFICATIONS. THIS WORK SHALL BE BID AND PAID FOR UNDER THE ITEM "PROJECT SEEDING".

THE CONTRACTOR SHALL WASTE EXCESS EXCAVATION (APPROX. 3995 CU. YDS.) NOT DESIRED BY THE DEVELOPER (MR. BRYAN LAGALEY (316) 253-6833) AT SITE(S) PROVIDED BY THE CONTRACTOR. THIS WORK SHALL BE SUBSIDIARY TO "EXCAVATION".

THE CONTRACTOR SHALL INSTALL AND/OR MAINTAIN EROSION CONTROL METHODS (BMP'S) AS SPECIFIED ON SHEET 16. THE FOLLOWING QUANTITIES ARE ESTIMATED, AND SHOULD BE CONSIDERED THE MINIMUM EFFORT REQUIRED. INSTALLATION OF THESE BMP'S DOES NOT RELIEVE THE CONTRACTOR OF THE RESPONSIBILITY OF ABATING SOIL EROSION.

INLET PROTECTION	EACH	5
SILT FENCE BARRIER	L.F.	1380
CONSTRUCTION ENTRANCE	EACH	1
BACK OF CURB PROTECTION	L.F.	2696

JULY 2001

PLANS PREPARED BY

PROFESSIONAL ENGINEERING CONSULTANTS, P.A.
ENGINEERS
WICHITA, KANSAS



DSNR: DEP. OPER. SCALE: 1"=150.00
 C:\2001\01256\0001\STRITILE 08-30-2001 10:26:50 am