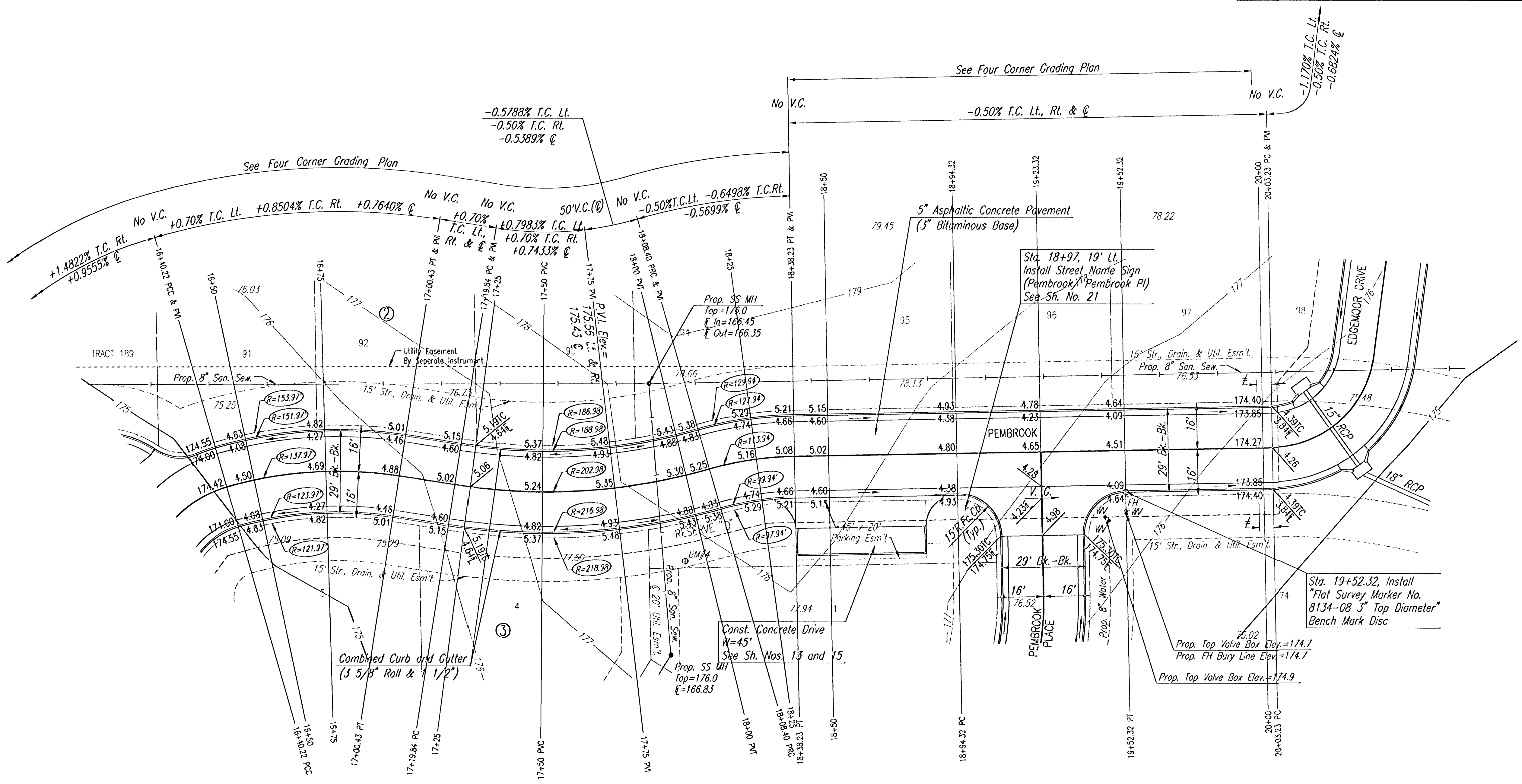


STREET	STATION	OFFSET	PROPOSED ELEVATION
PEMBROOK CIRCLE	19+44.99	23.0' RL	174.9
PEMBROOK CIRCLE	19+52.32	22.0' RL	174.7



NOTE: THIS STREET TO BE CONSTRUCTED WITH ROLL-TYPE CURB. TOP OF CURB ELEVATIONS GIVEN ARE FOR FULL HEIGHT CURB.

≠ 5' TRANSITION FROM COMBINED CURB AND GUTTER 3 5/8" ROLL & 1 1/2" TO COMBINED CURB AND GUTTER (6 5/8" & 1 1/2"). TO BE BID AND PAID FOR AS "COMBINED CURB AND GUTTER (3 5/8" ROLL & 1 1/2)".

$\Delta=25^{\circ}00'00"$ $D=41^{\circ}31'40"$ $R=137.97'$ $L=60.21'$ $T=30.59'$ $E=3.35'$						
CURVE DATA BASED ON $\Delta/2=12^{\circ}30'00"$						
STATION	ARC LENGTH	FACE CURB LENGTH	CHORD LENGTH	DEFLECTION ANGLE	TOTAL DEFLECTION	
		LEFT CURB	RIGHT CURB		8' OFF LEFT FACE CURB	8' OFF RIGHT FACE CURB
16+40.22				0°00'00"	0°00'00"	0°00'00"
16+50	9.78'	10.77'	8.78'	11.33'	8.22'	2°01'49"
16+75	25.00'	27.53'	22.46'	28.94'	20.98'	7°13'14"
17+00.43	25.43'	28.01'	22.85'	29.44'	21.34'	12°30'00"
TOTAL	60.21'	66.31'	54.09'			

$\Delta=25^{\circ}00'00"$ $D=28^{\circ}13'38"$ $R=202.98'$ $L=88.56'$ $T=45.00'$ $E=4.93'$						
CURVE DATA BASED ON $\Delta/2=12^{\circ}30'00"$						
STATION	ARC LENGTH	FACE CURB LENGTH	CHORD LENGTH	DEFLECTION ANGLE	TOTAL DEFLECTION	
		LEFT CURB	RIGHT CURB		8' OFF LEFT FACE CURB	8' OFF RIGHT FACE CURB
17+19.84				0°00'00"	0°00'00"	0°00'00"
17+25	5.16'	4.80'	5.53'	4.60'	5.72'	0°43'42"
17+50	25.00'	23.28'	26.72'	22.28'	27.69'	3°31'43"
17+75	25.00'	23.28'	26.72'	22.28'	27.69'	3°31'43"
18+00	25.00'	23.28'	26.72'	22.28'	27.69'	3°31'43"
18+08.40	8.40'	7.82'	8.99'	7.49'	9.31'	1°11'08"
TOTAL	88.56'	82.46'	94.68'			

$\Delta=15^{\circ}00'00"$ $D=50^{\circ}17'09"$ $R=113.94'$ $L=29.83'$ $T=15.00'$ $E=0.98'$						
CURVE DATA BASED ON $\Delta/2=7^{\circ}30'00"$						
STATION	ARC LENGTH	FACE CURB LENGTH	CHORD LENGTH	DEFLECTION ANGLE	TOTAL DEFLECTION	
		LEFT CURB	RIGHT CURB		8' OFF LEFT FACE CURB	8' OFF RIGHT FACE CURB
18+08.40				0°00'00"	0°00'00"	0°00'00"
18+25	16.60'	18.64'	14.56'	19.79'	13.38'	4°10'25"
18+38.23	13.23'	14.85'	11.60'	15.78'	10.67'	3°19'35"
TOTAL	29.83'	33.49'	26.16'			

DSNR\_GDD OPER: DEP SCALE: 1"=20.00  
 C:\2001\01256\000\STR16-18\_08-29-2001\_02:46:49.dwg

THE COURTS II

**PEMBROOK**  
STA. 16+40.22 TO STA. 20+03.23

**Professional Engineering Consultants, P.A.**  
303 S. TOPEKA WICHITA, KANSAS 67202  
316-262-2691 • FAX 316-262-3003

Designed by	BER	Checked by	
Drawn by	DEP	Date	JULY, 2001
		Job No.	01256