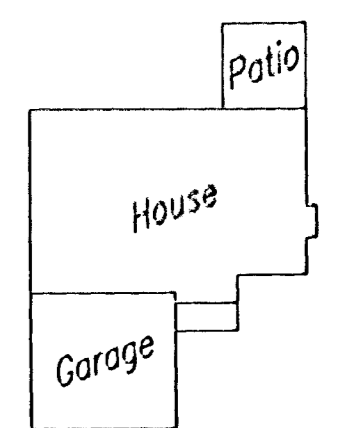


LOT NOS.	BLOCK NOS.	MINIMUM PAD
74-78	2	173.0
79-81	2	172.0
82-87	2	173.0
98	2	175.0



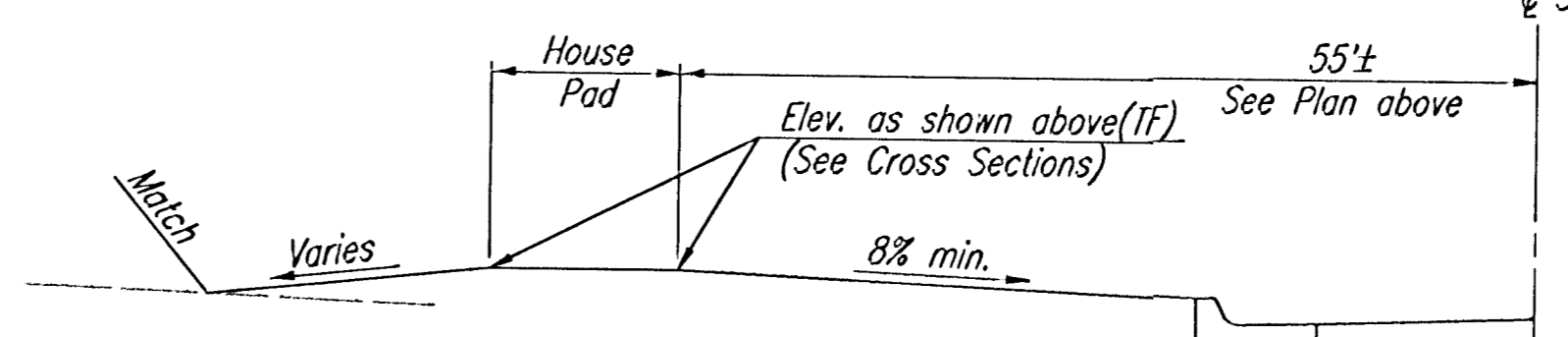
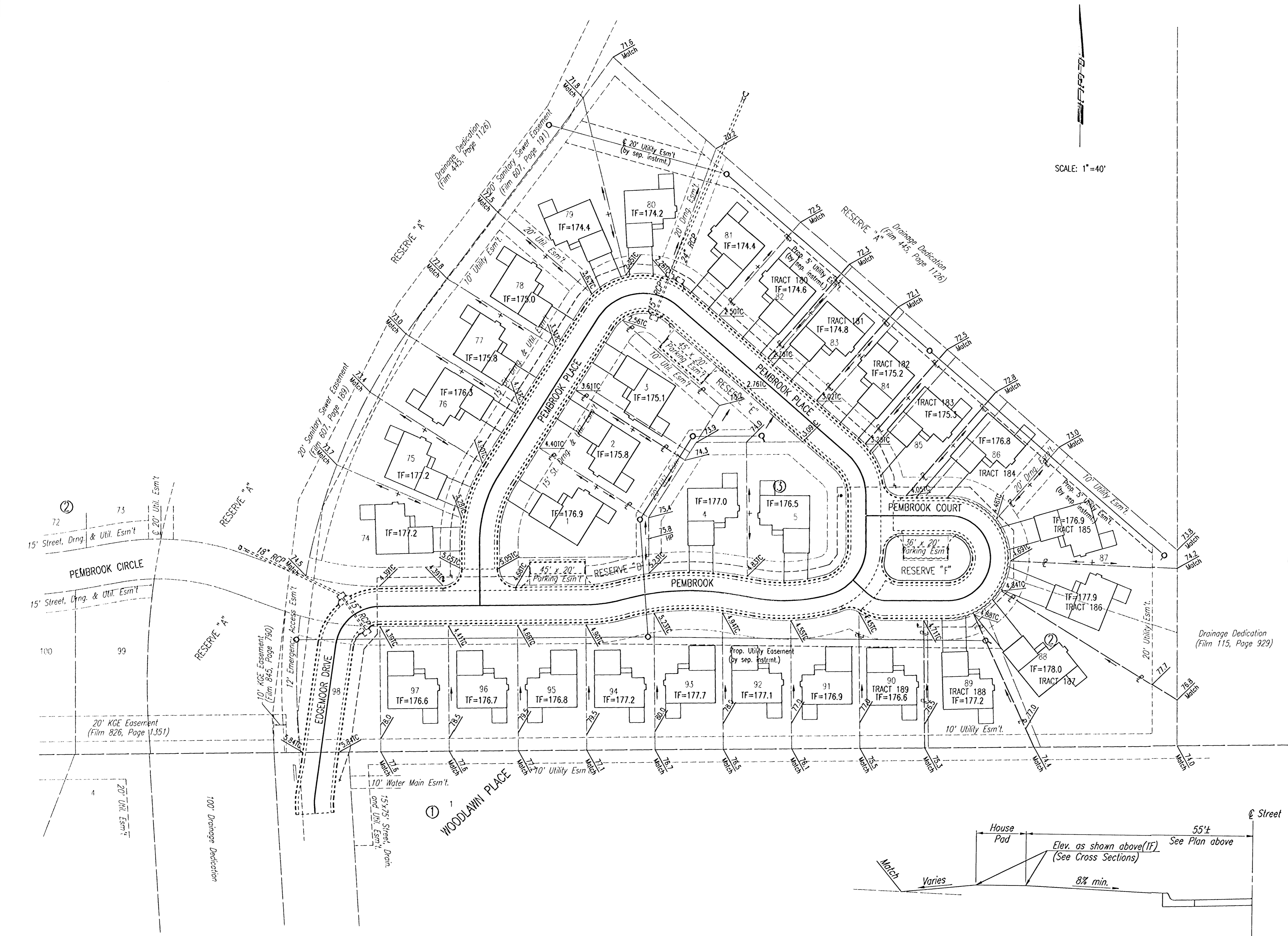
- LEGEND**
- TF TOP OF FOUNDATION
 - TC TOP OF CURB
 - DIRECTION OF DRAINAGE

PROJECT SURVEY CONTROL

- BM #1: CHISELED "G" ON THE NORTHEAST CORNER OF A CONCRETE PAD FOR ELEC. BOX 18' NORTH AND 27' WEST OF THE SOUTHWEST CORNER OF LOT 98, BLOCK 2. ELEV.=176.765
- BM #2: "T" POST DRIVEN FLUSH WITH THE GROUND. 42' NORTH AND 52' WEST OF THE NORTHERN MOST CORNER OF LOT 80, BLOCK 2 ON THE TOP OF THE EAST FLOODWAY SLOPE. ELEV.=170.89
- BM #3: "T" POST DRIVEN FLUSH WITH THE GROUND. 47' NORTH AND 18' WEST OF THE NORTHEAST CORNER OF LOT 87, BLOCK 2 ON TOP OF THE SOUTH FLOODWAY SLOPE. ELEV.=172.98
- BM #4: #4 BAR 36" LONG DRIVEN FLUSH WITH THE GROUND. 11' NORTH AND 13' WEST OF THE SOUTHWEST CORNER OF LOT 4, BLOCK 3 IN RESERVE "D". ELEV.=178.34
- BM C.O.W.#1: EDGEMOOR AND 21ST STREET NORTH C.O.W. BRASS DISC ON THE NORTHWEST CORNER OF THE RCB ON 21ST STREET NORTH BETWEEN EDGEMOOR AND RIDGEWOOD. ELEV.=195.64
- BM C.O.W.#2: EDGEMOOR AND MAINSGATE C.O.W. BRASS DISC SOUTHWEST CORNER INTERSECTION ON THE TOP OF HEADWALL AT THE SOUTHEAST CORNER OF A DOUBLE WIDE RCB. ELEV.=181.01

SCALE: 1"=40'

DSNR: GDD, OPER. DEP. SCALE: 1"=40.00
 Q:\2001\01256\000\FOURCORNER 08-29-2001 02:45:13 pm



TYPICAL GRADING SECTION

THE COURTS II

FOUR CORNER GRADING PLAN

Professional Engineering Consultants, P.A.
 303 S. TOPEKA • WICHITA, KANSAS 67202
 316-262-2691 • FAX 316-262-3003

Designed by	BER	Checked by	
Drawn by	DEP	Date	JULY, 2001
		Job No.	01256