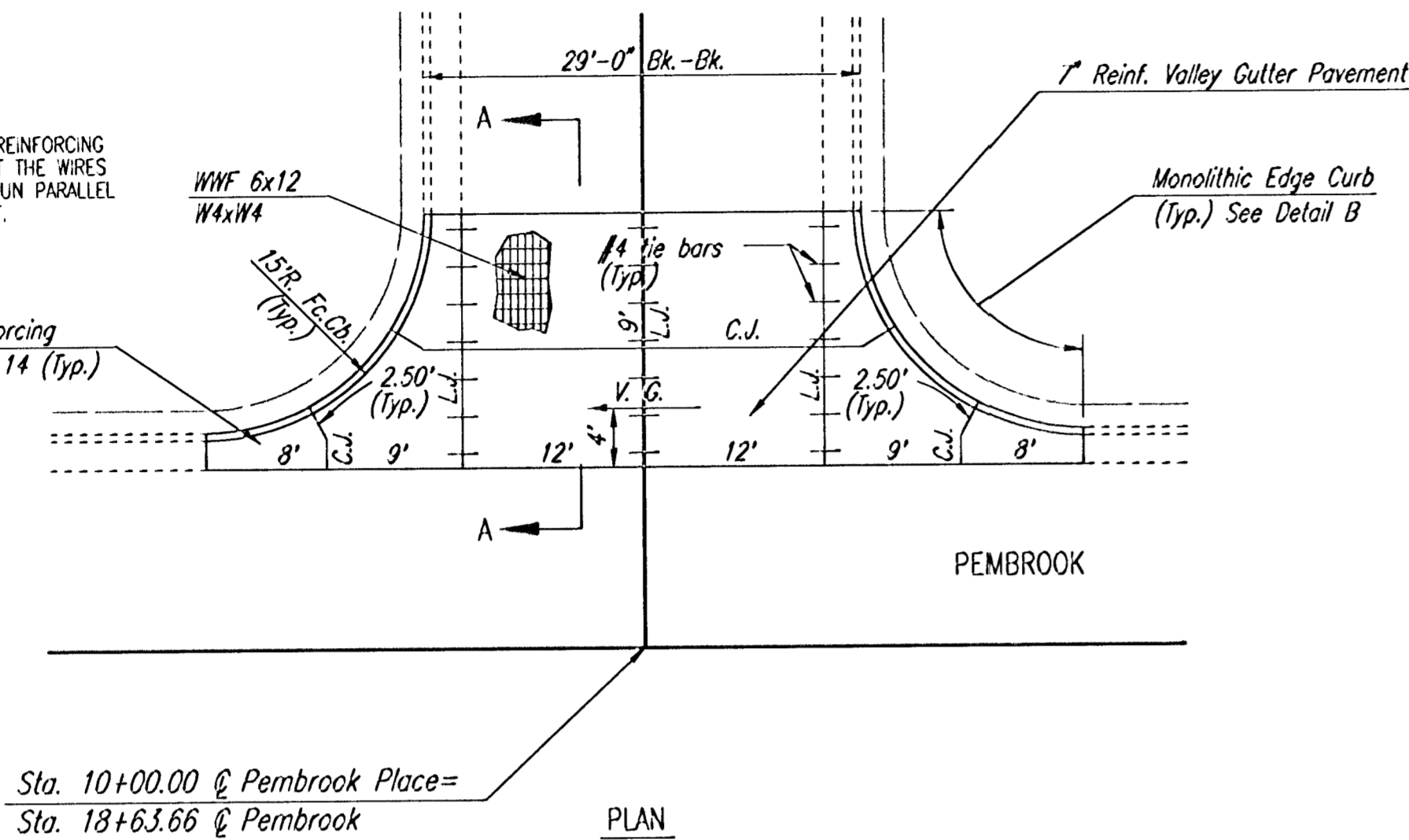


SCALE: 1" = 10'

6"x12" W4xW4 WIRE FABRIC REINFORCING SHALL BE PLACED SUCH THAT THE WIRES WITH THE 6" SPACING WILL RUN PARALLEL WITH THE LONGITUDINAL JOINT.

See Wing Reinforcing Detail, Sh. No. 14 (Typ.)

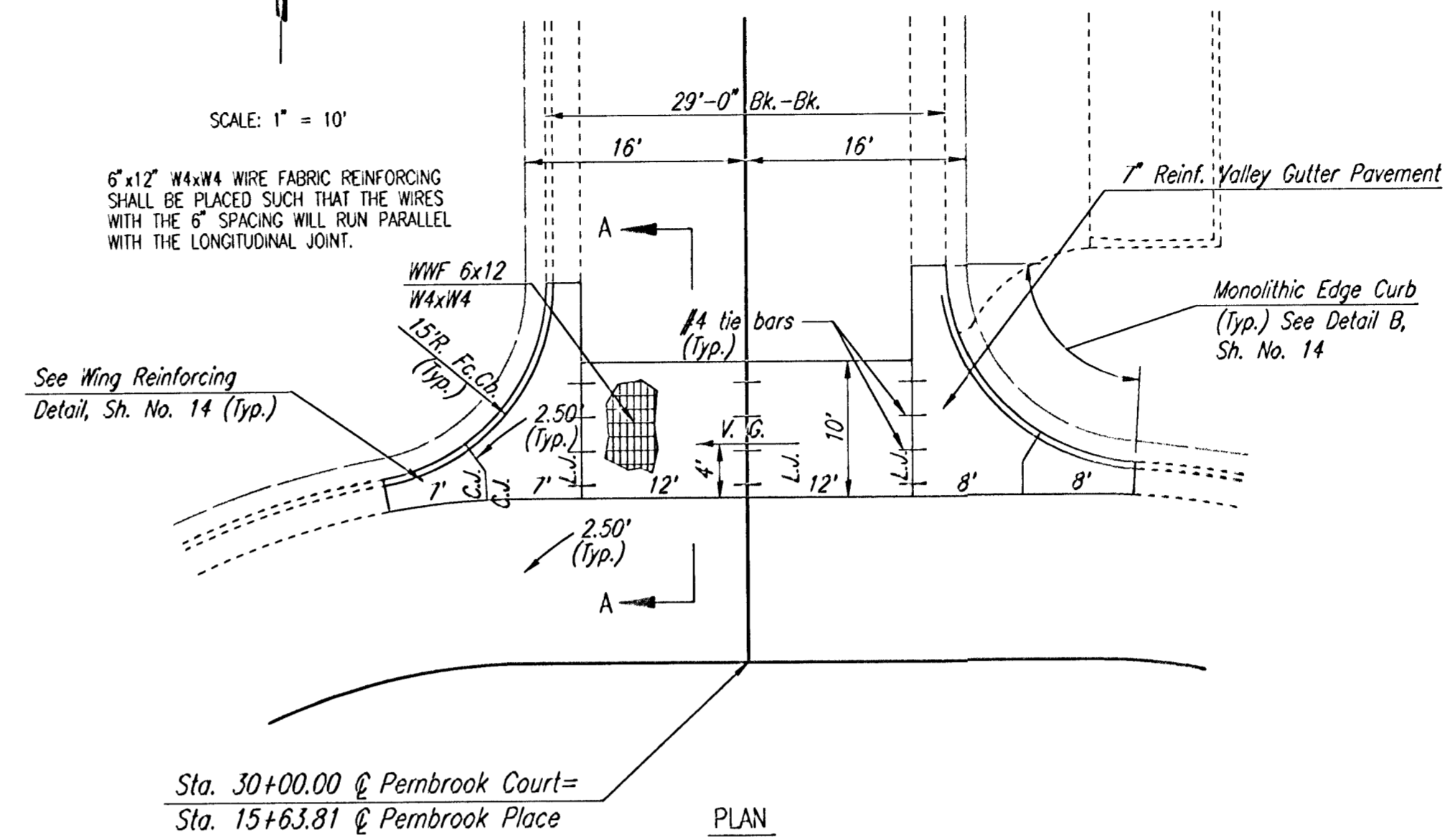


PLAN
REINFORCED VALLEY GUTTER

SCALE: 1" = 10'

6"x12" W4xW4 WIRE FABRIC REINFORCING SHALL BE PLACED SUCH THAT THE WIRES WITH THE 6" SPACING WILL RUN PARALLEL WITH THE LONGITUDINAL JOINT.

See Wing Reinforcing Detail, Sh. No. 14 (Typ.)

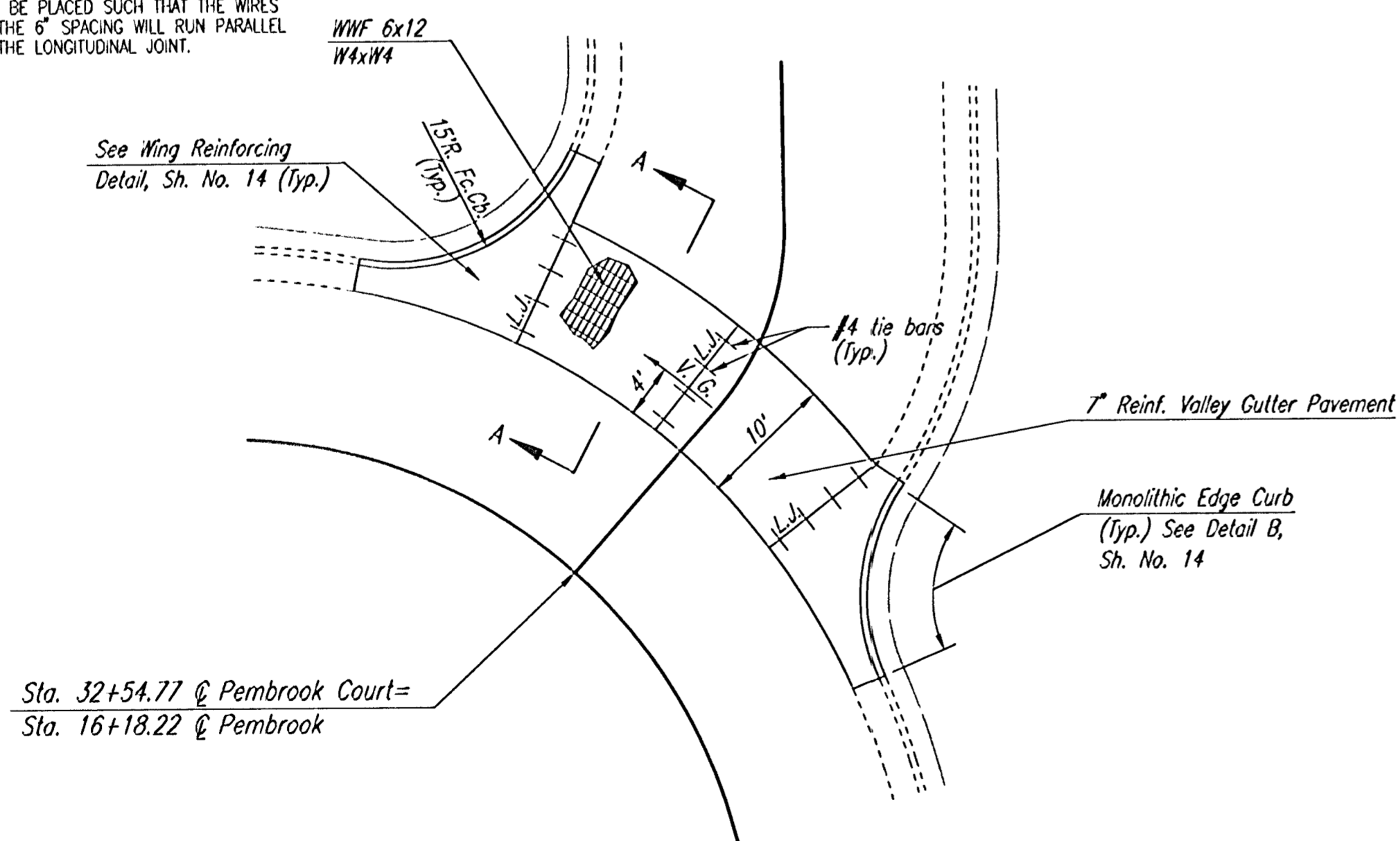


PLAN
REINFORCED VALLEY GUTTER

SCALE: 1" = 10'

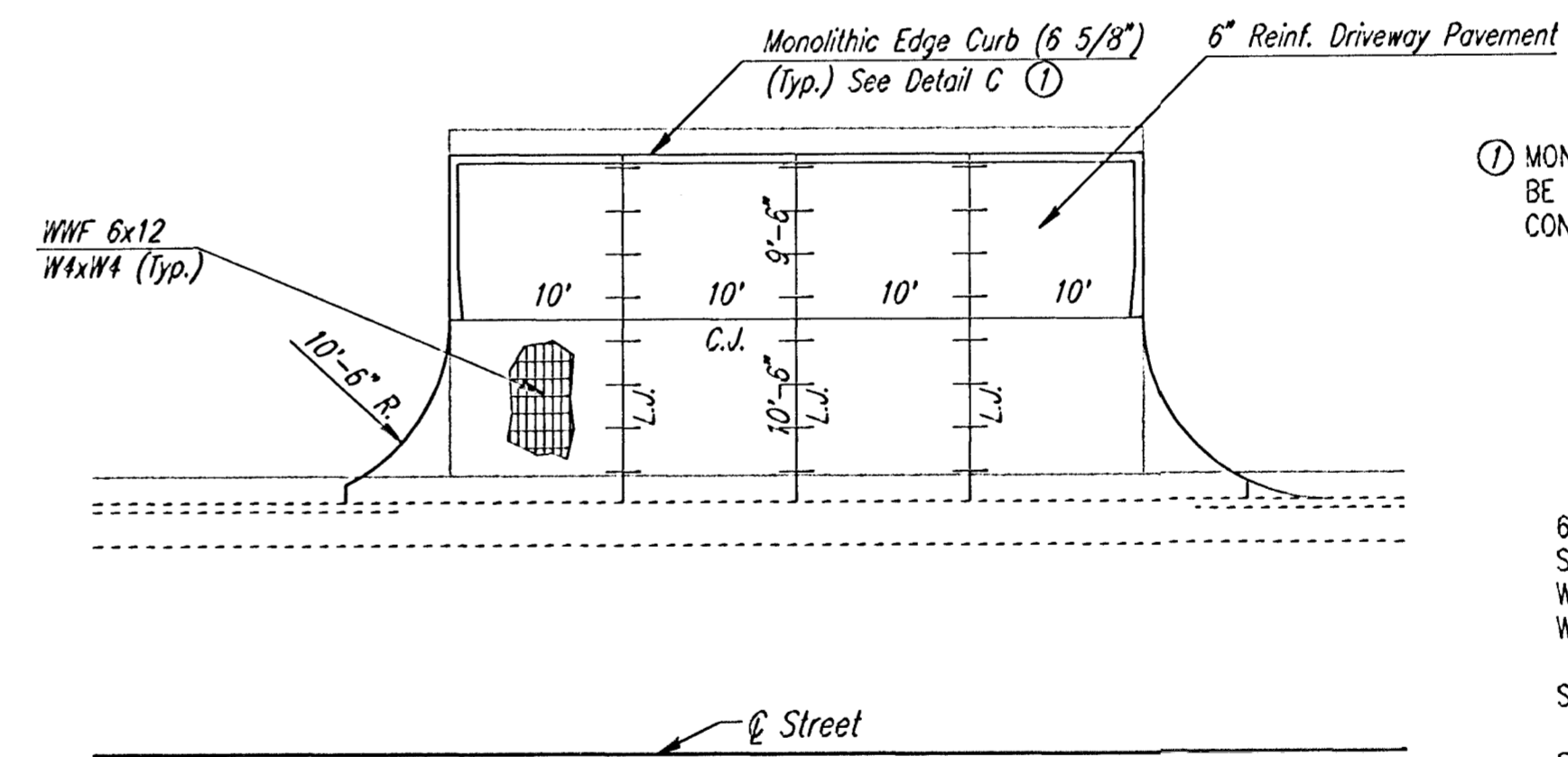
6"x12" W4xW4 WIRE FABRIC REINFORCING SHALL BE PLACED SUCH THAT THE WIRES WITH THE 6" SPACING WILL RUN PARALLEL WITH THE LONGITUDINAL JOINT.

See Wing Reinforcing Detail, Sh. No. 14 (Typ.)



PLAN
REINFORCED VALLEY GUTTER

① MONOLITHIC EDGE CURB SHALL BE SUBSIDIARY TO "6" DRIVEWAY CONCRETE PAVEMENT.

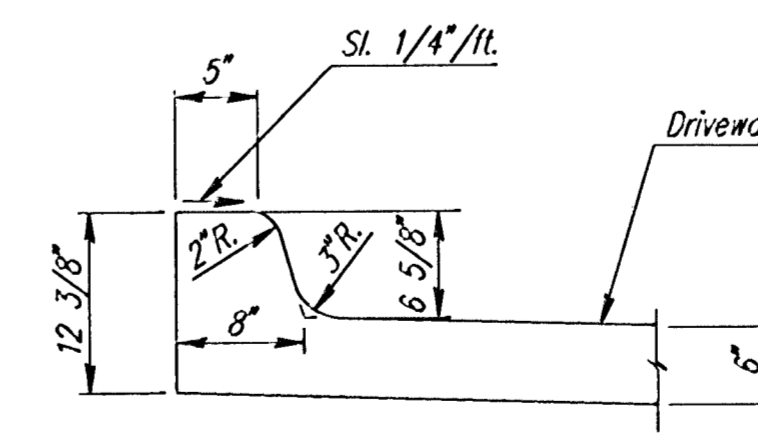


DRIVEWAY DETAILS

6"x12" W4xW4 WIRE FABRIC REINFORCING SHALL BE PLACED SUCH THAT THE WIRES WITH THE 6" SPACING WILL RUN PARALLEL WITH THE LONGITUDINAL JOINT.

SEE SHEET NO. 14 FOR JOINT DETAILS.

SEE SHEET NO. 15 FOR ADDITIONAL DRIVE CONSTRUCTION DETAILS.



DETAIL C
(6 5/8")

THE COURTS II

VALLEY GUTTER PLAN



Professional Engineering Consultants, P.A.
303 S. TOPEKA • WICHITA, KANSAS 67202
316-262-2691 • FAX 316-262-3003

Designed by	BER	Checked by	
Drawn by	DEP	Date	JULY, 2001
		Job No.	01256