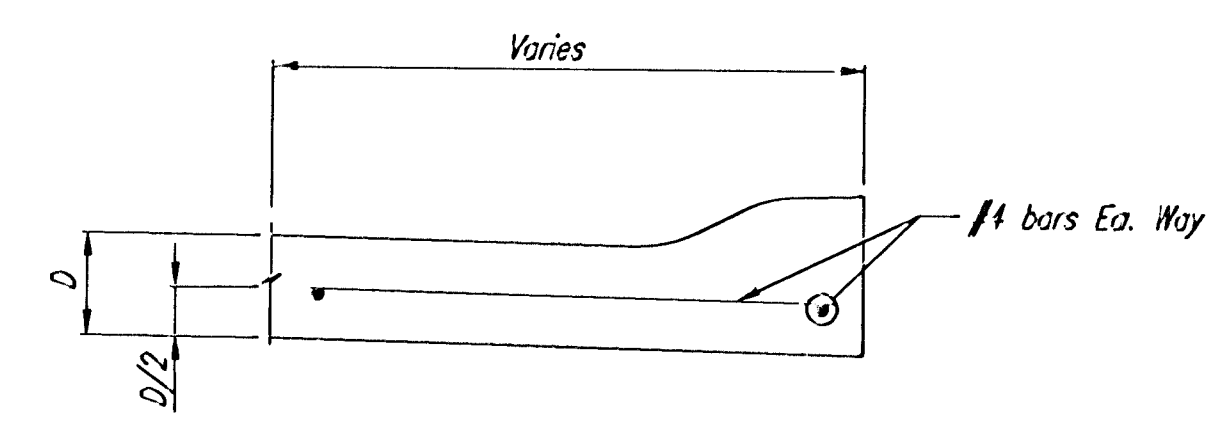


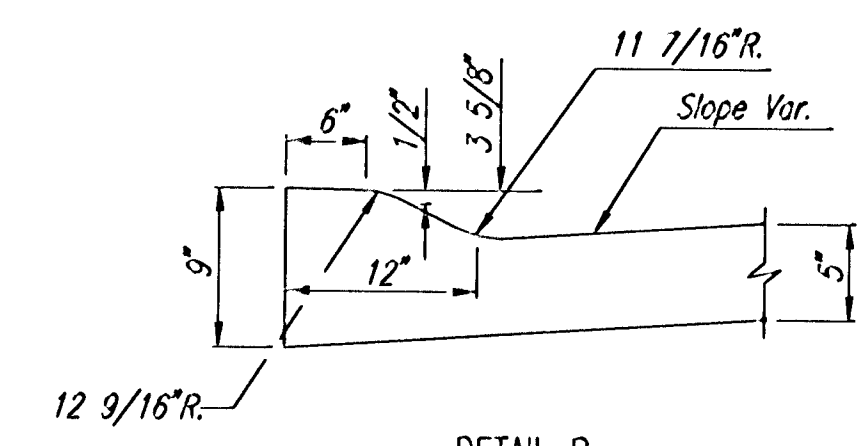
**SECTION A-A**

NOTE: OMIT REINFORCING MESH AT ALL JOINTS

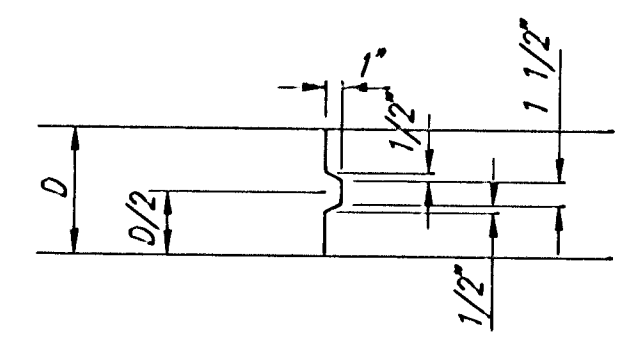
NOTE: ALL CONCRETE VALLEY GUTTER REINFORCEMENT SHALL BE ADEQUATELY SUPPORTED BY BAR CHAIRS IN THE REQUIRED POSITION UNLESS APPROVED OTHERWISE BY THE ENGINEER.



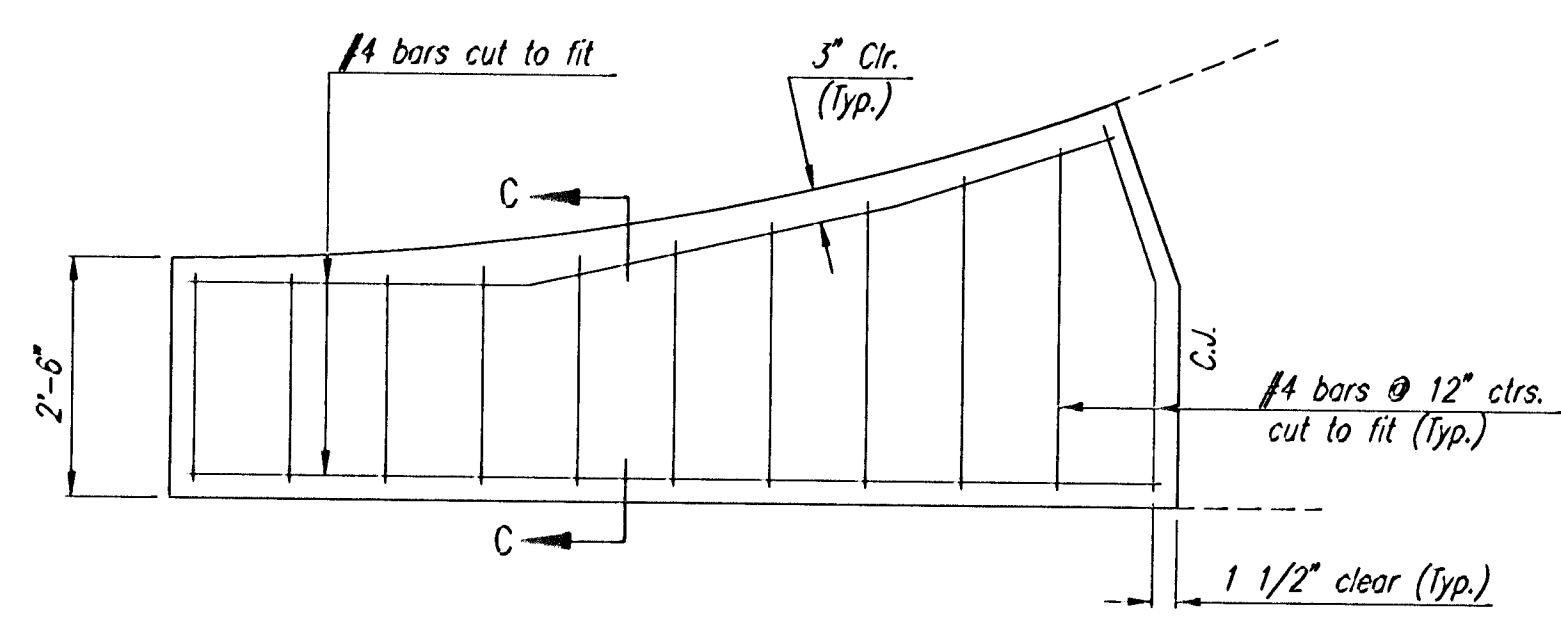
**SECTION C-C**



**DETAIL B  
(ROLL-TYPE CURB)**

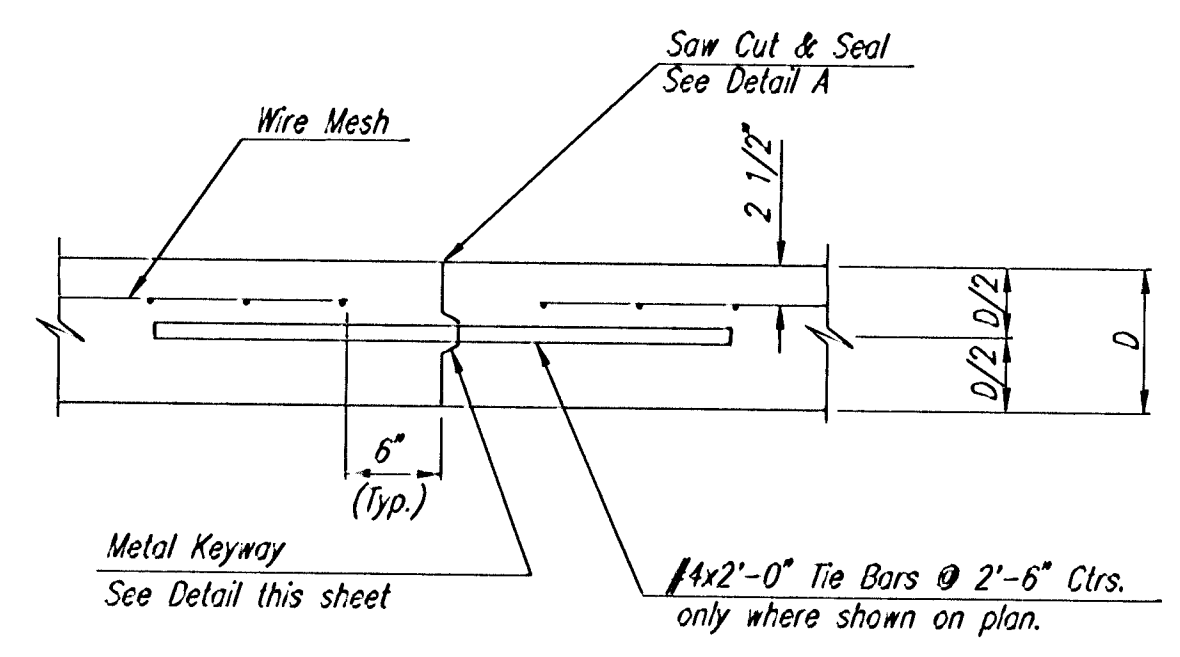


**KEYWAY DETAIL**

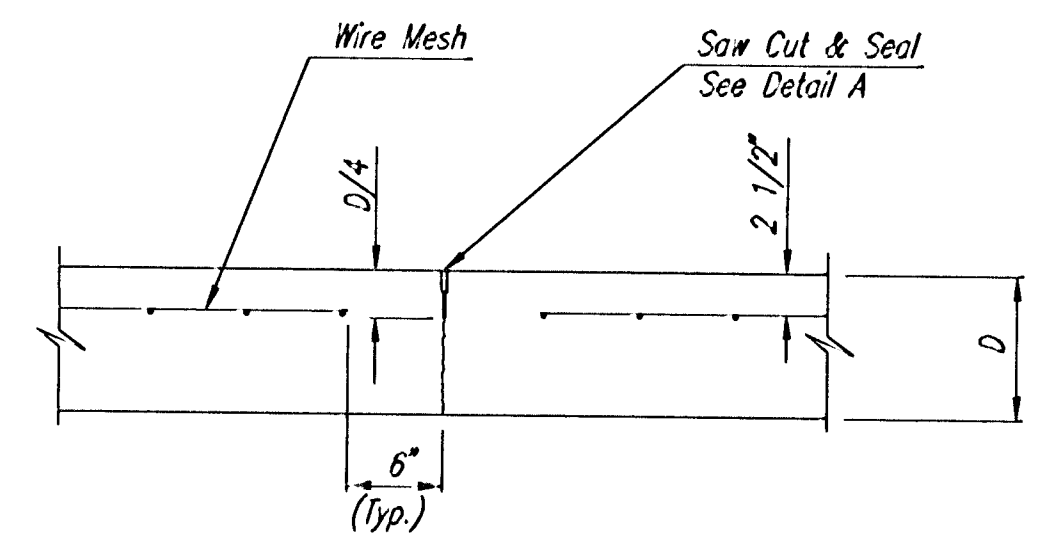


**WING REINFORCING DETAIL**

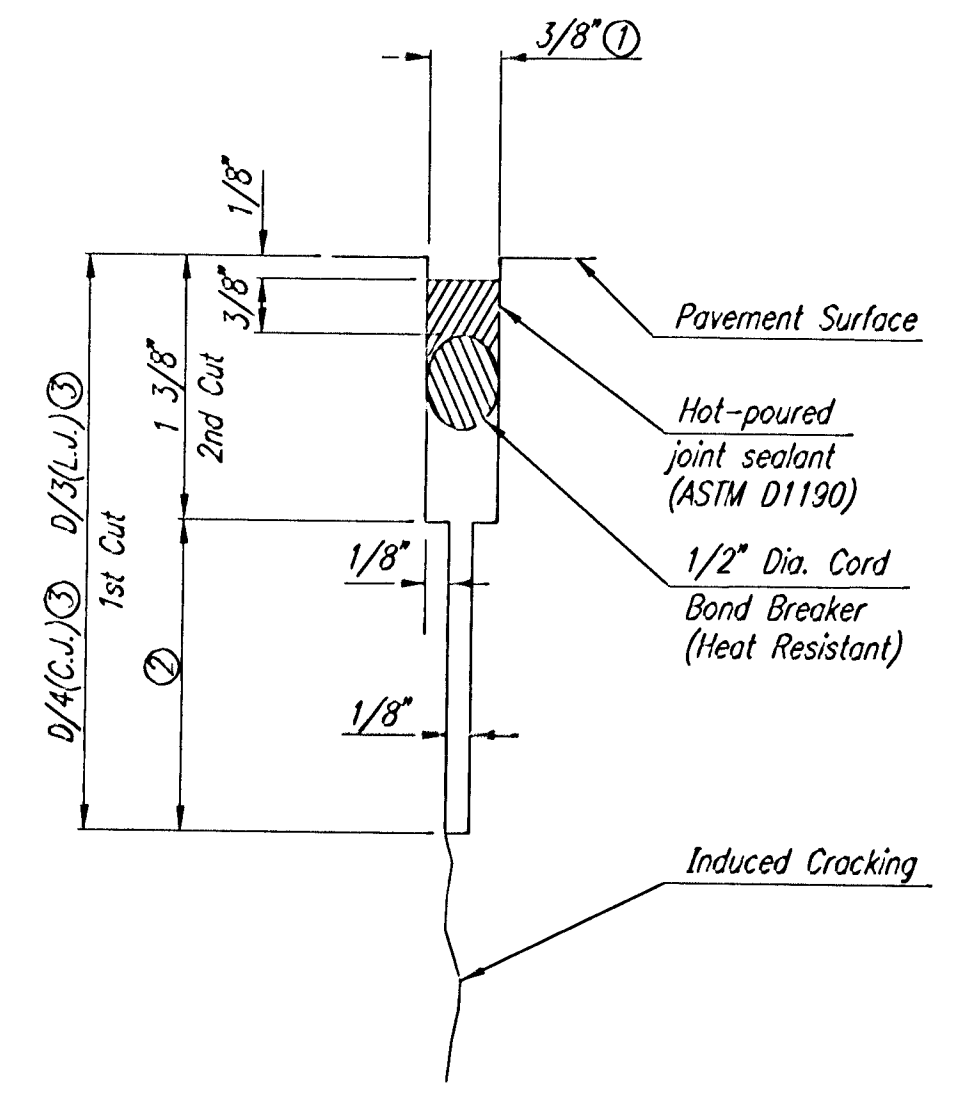
NOTE: OMIT WIRE FABRIC REINFORCING IN THIS SECTION.



**LONGITUDINAL CONSTRUCTION JOINT DETAIL  
REINFORCED PAVEMENT  
(TRANSVERSE SECTION)  
(ALTERNATE L.J.)**

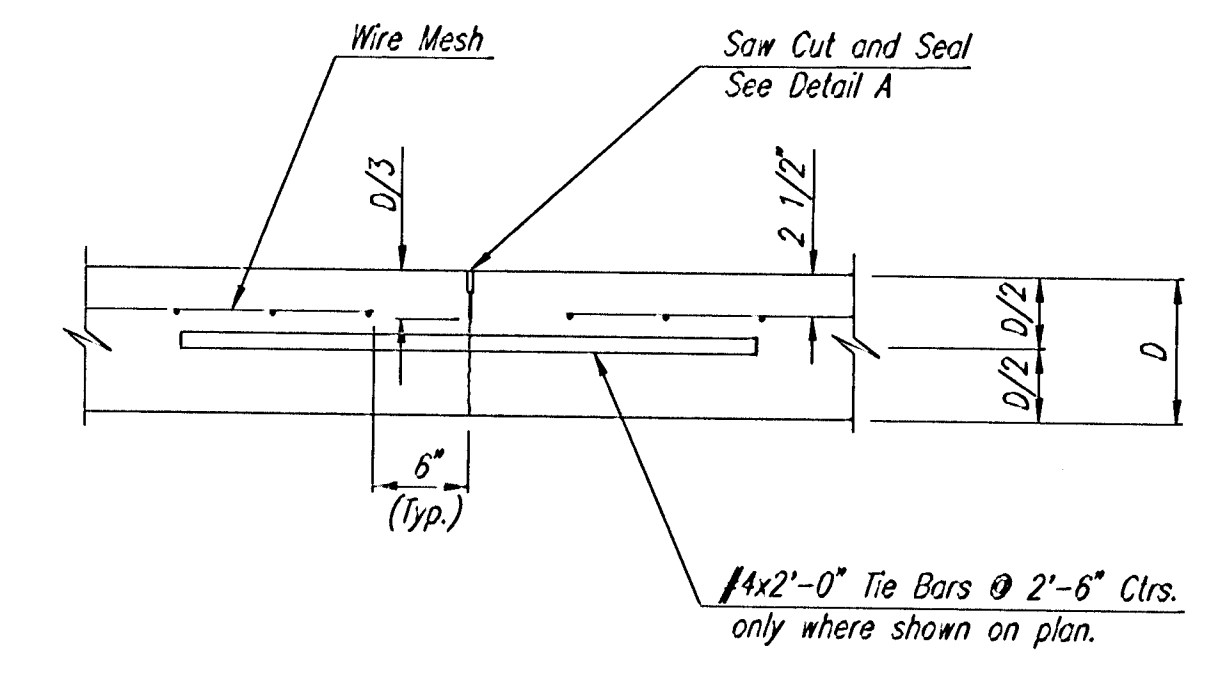


**CONTRACTION JOINT DETAIL  
REINFORCED PAVEMENT  
(C.J.)**



**DETAIL A**

- ① To be accomplished in 2 cuts for Longitudinal Joints and Contraction Joints. Initial cut to be 1/8" wide.
- ② Eliminate bottom of cut when metal keyway is used as part of Longitudinal or Transverse Construction Joint and at Doweled Construction Joint Locations.
- ③ 1 1/2" Minimum



**LONGITUDINAL JOINT DETAIL  
REINFORCED PAVEMENT  
(TRANSVERSE SECTION)  
(L.J.)**

THE COURTS II

## VALLEY GUTTER DETAILS

**Professional Engineering Consultants, P.A.**  
303 S. TOPEKA • WICHITA, KANSAS 67202  
316-262-2691 • FAX 316-262-3003

Designed by	BER	Checked by	
Drawn by	DEP	Date	JULY, 2001
		Job No.	01256

DSNR-DEP OPER-DEP SCALE: 1=10.00  
 C:\2001\01256\000\VALGUTDL\_08-29-2001\_02:43:37.ppt