

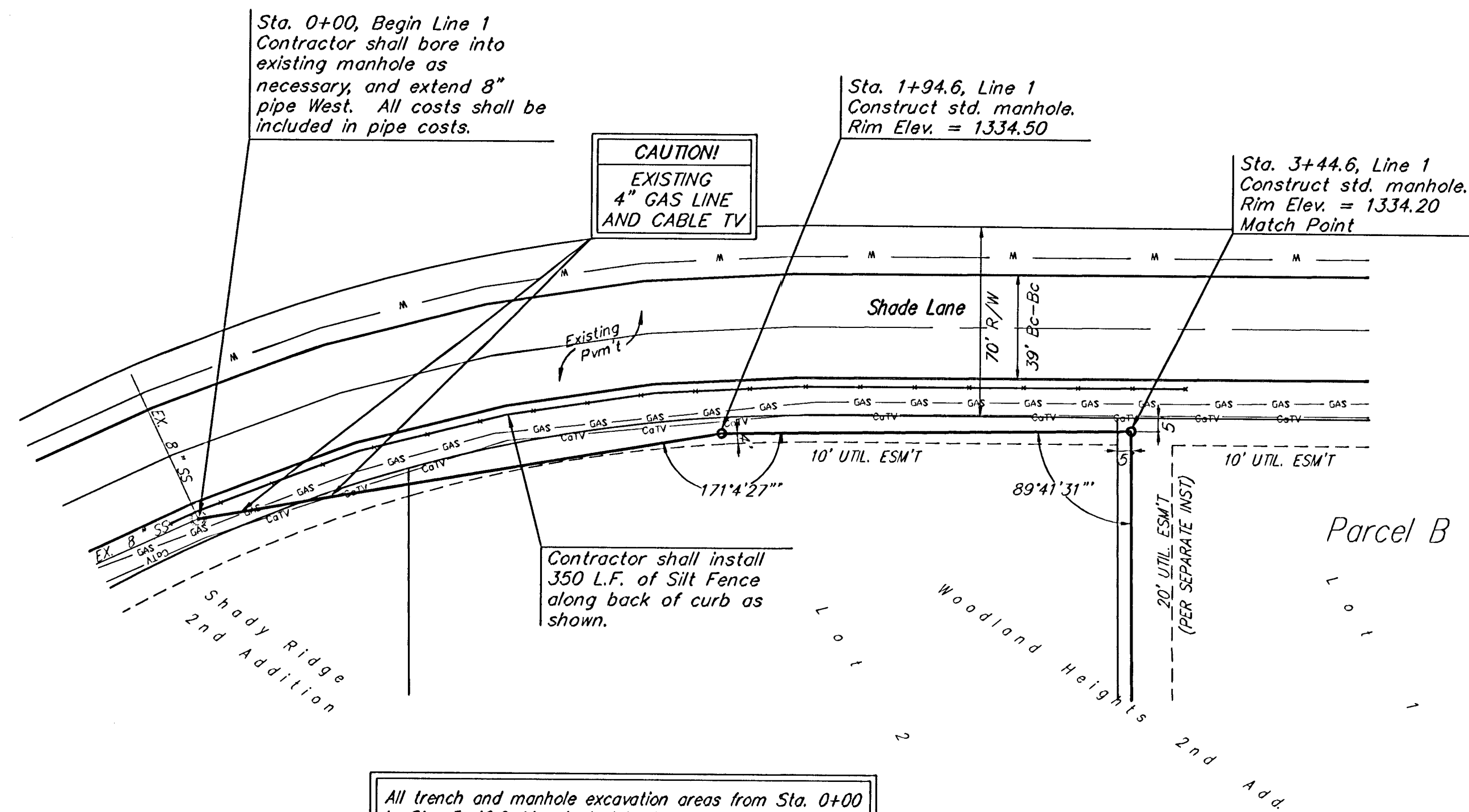
**BENCHMARK:**

BM #1 : "□" Cut on back of walk at the South East corner of lot 1, Woodland Heights 2nd Addition.

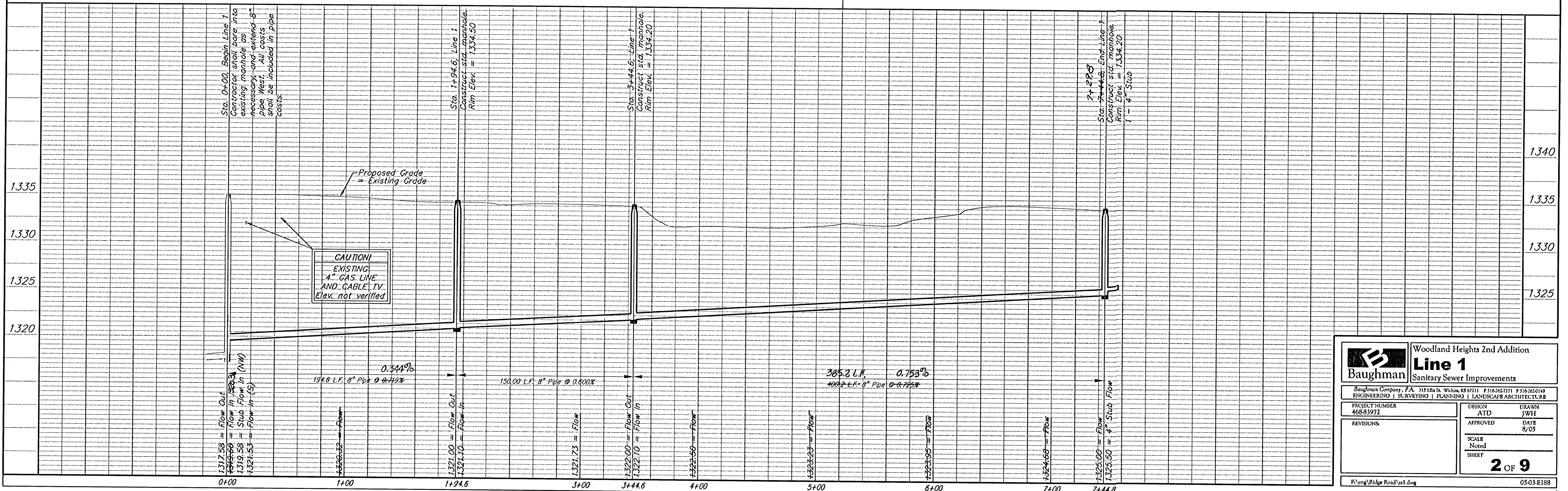
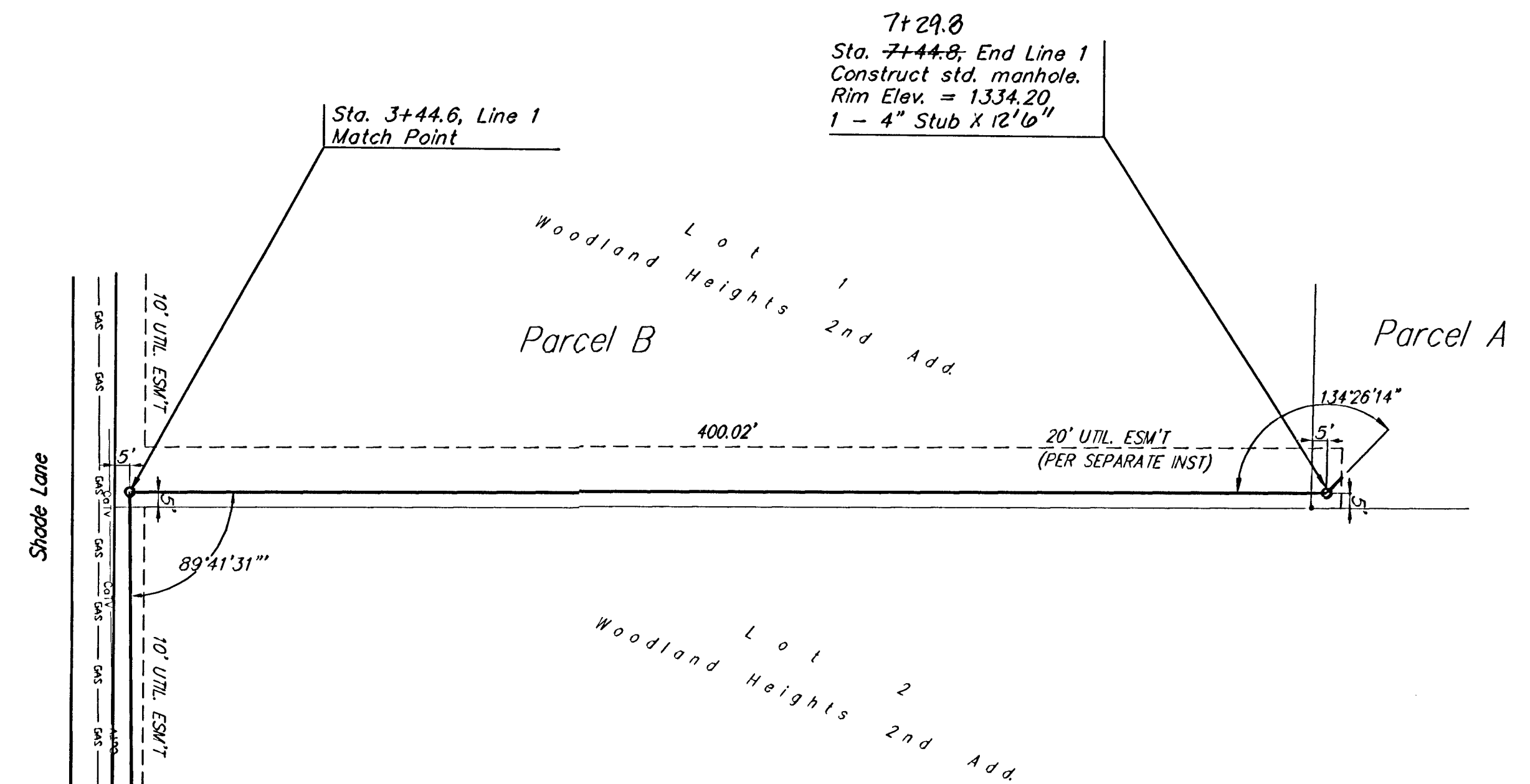
Elev. = 1332.94

Scale: 1" = 40' Horizontal  
1" = 5' Vertical  
• = Iron

Scale: 1" = 40' Horizontal  
1" = 5' Vertical  
• = Iron



All trench and manhole excavation areas from Sta. 0+00 to Sta. 3+44.6, Line 1 shall be backfilled with sand. The sand backfill shall be within two feet of existing grade and shall be water-jetted and vibrated during backfilling. All costs shall be subsidiary to pipe cost.



CAUTION  
EXISTING  
4" GAS LINE  
AND CABLE TV  
Elev. not verified

<b>Baughman</b>		Woodland Heights 2nd Addition	
		<b>Line 1</b>	
		Sanitary Sewer Improvements	
Baughman Company, P.A. 315 Elm St. W. Suite 83 07211 F 315.262.2271 F 315.262.0149			
ENGINEERING   SURVEYING   PLANNING   LANDSCAPE ARCHITECTURE			
PROJECT NUMBER 468-83972	DESIGN ATD	DRAWN JWH	DATE 8/05
REVISIONS:	APPROVED	SCALE Noted	SHEET 2 OF 9
F:\eng\Ridge Road\ss1.dwg		05.03.E188	