

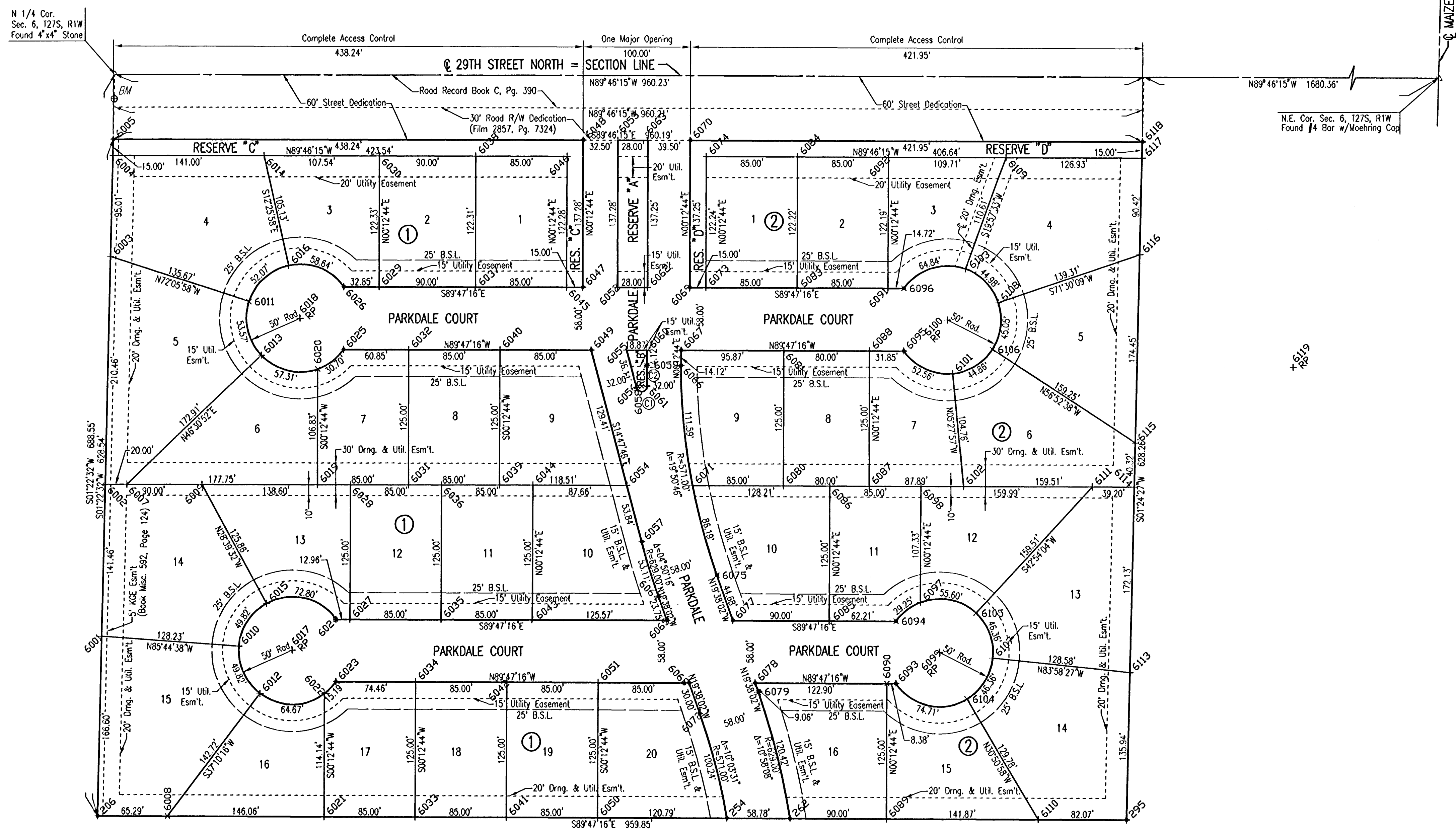
EVERGREEN 5TH

AN ADDITION TO WICHITA, SEDGWICK COUNTY, KANSAS



SCALE: 1"=60'
 • = 1/2" REBAR W/PEC CAP UNLESS OTHERWISE NOTED

CURVE INFORMATION
 (1) L=14.56'
 R=5.00'
 Δ=166°49'35"
 (2) L=19.31'
 R=603.00'
 Δ=01°50'06"



PNT#	NORTHING	EASTING
206	9588.212031	2471.039426
254	9586.036189	3058.175349
262	9585.818375	3116.951070
295	9584.654991	3430.882012
6001	9754.766810	2475.038959
6002	9896.186739	2478.434920
6003	10106.582712	2483.487226
6004	10201.588902	2485.768160
6005	10216.567582	2486.128328
6006	9491.055090	2495.130421
6007	9896.112623	2498.434783
6008	9587.970078	2536.328866
6009	9895.853221	2568.432684
6010	9745.250422	2602.910535
6011	10064.882641	2612.588976
6012	9701.897897	2622.562747
6013	10015.105742	2623.890738
6014	10201.004933	2626.770105
6015	9785.414187	2628.793035
6016	10098.341798	2649.403504
6017	9741.539611	2652.772643
6018	10049.514320	2660.168138
6019	9895.453928	2676.179066
6020	10001.287802	2676.574958
6021	9587.428788	2682.392074
6022	9701.571467	2682.815070
6023	9712.388669	2693.395718
6024	9770.388470	2693.610656
6025	10020.363577	2700.791213
6026	10078.363179	2701.006151
6027	9770.340460	2708.565828
6028	9895.339602	2707.029057
6029	10078.244439	2733.858841
6030	10200.574907	2734.310192
6031	9895.138932	2761.178482
6032	10020.138074	2761.641711
6033	9587.113793	2767.391490
6034	9712.112934	2767.854719
6035	9770.025465	2791.565244
6036	9895.024606	2792.028473
6037	10077.907914	2823.858223
6038	10200.214973	2824.309476
6039	9894.823936	2846.177898
6040	10019.823078	2846.641127
6041	9586.798797	2852.390906
6042	9711.797939	2852.854135
6043	9769.710469	2876.564681
6044	9894.705611	2877.027890
6045	10077.592918	2908.855840
6046	10199.875035	2909.308800
6047	10077.537331	2923.855537
6048	10214.814943	2924.364268
6049	10019.508082	2931.640544
6050	9586.483801	2937.390323
6051	9711.482943	2937.853552
6052	10077.416891	2956.352174
6053	10214.814943	2956.864045
6054	9894.384745	2964.690531
6055	10019.385308	2964.770466
6056	9984.468718	2973.993308

PNT#	NORTHING	EASTING
6057	9842.327175	2978.440980
6058	9885.745621	2978.827512
6059	10005.196174	2983.587863
6060	10019.315379	2983.640186
6061	9885.887199	2983.825507
6062	10077.313128	2994.355121
6063	10214.561397	2984.863744
6064	9791.612151	2994.154462
6065	9769.245127	3002.133908
6066	10005.077588	3015.587643
6067	10019.196792	3015.639967
6068	9711.167947	3022.852968
6069	10077.166747	3023.854850
6070	10214.415016	3024.363473
6071	9894.157371	3026.045901
6072	9889.915988	3032.931884
6073	10077.111160	3038.854747
6074	10199.355130	3039.307766
6075	9811.100649	3048.782779
6077	9769.016617	3063.795777
6078	9710.939437	3084.514837
6079	9702.404496	3087.559681
6080	9893.842375	3111.045317
6081	10018.941517	3111.508546
6083	10076.796164	3123.854163
6084	10199.015191	3124.307090
6085	9768.683092	3153.795159
6086	9893.682234	3154.258388
6087	9893.545909	3191.044768
6088	10018.545051	3191.507997
6089	9585.484850	3206.950452
6090	9710.483991	3207.411581
6091	10076.481169	3208.853590
6092	10198.675253	3209.306414
6093	9710.452951	3215.789771
6094	9768.452553	3216.004710
6095	10018.427025	3223.356326
6096	10076.426627	3223.571264
6097	9786.038390	3238.860659
6098	9893.367238	3239.257804
6099	9739.301810	3258.627794
6100	10047.275884	3264.194139
6101	9897.503231	3268.957008
6102	9893.220198	3278.935693
6103	10094.272728	3281.261756
6104	9696.375954	3282.267029
6105	9775.926243	3290.664934
6106	10019.354174	3308.069441
6107	9734.053957	3308.515171
6108	10063.139146	3311.611181
6109	10198.236486	3319.017331
6110	9584.959119	3348.815346
6111	9892.774333	3399.249233
6113	9720.555024	3434.220913
6114	9892.629066	3438.448666
6115	9832.936339	3439.438668
6116	10107.937268	3443.736900
6117	10197.728866	3445.344504
6118	10212.727512	3446.313003
6119	10002.961558	3586.583722

+106 = COORDINATE POINT NO.

DSNR: BMM OPER: BJS SCALE: 1"=60.00
 C:\2005\05415\000\05415-000-C-PLAT 11-28-2005 08:18:00 am

No.	Revision	By	Date
EVERGREEN 5TH			
PLAT			
JAMES L. ARMOUR, P.E.—CITY ENGINEER CITY OF WICHITA PROJECT NO. 472-84103			
Professional Engineering Consultants, P.A. 303 S. TOPEKA • WICHITA, KANSAS 67202 316-262-2691 • FAX 316-262-3003			
Designed by	BDB, BMM	Job No.	35-05415-000
Drawn by	BJS, BMM	Date	July 2005
			Sheet 3 of 45