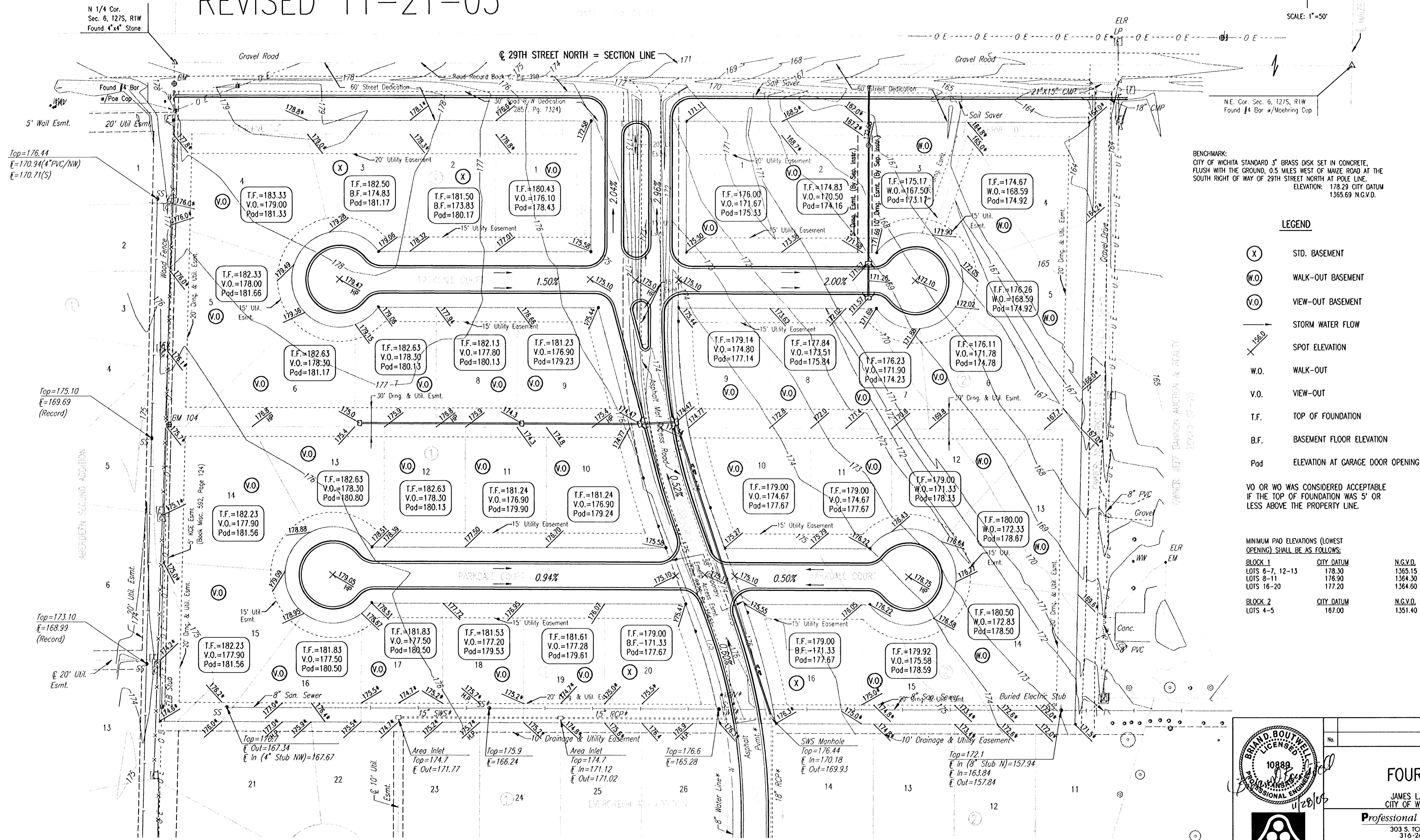


REVISED 9-08-05  
 REVISED 10-19-05  
 REVISED 11-21-05

4-CORNER PLAN  
**EVERGREEN 5TH**  
 AN ADDITION TO WICHITA, SEDGWICK COUNTY, KANSAS

SCALE: 1"=50'



**LEGEND**

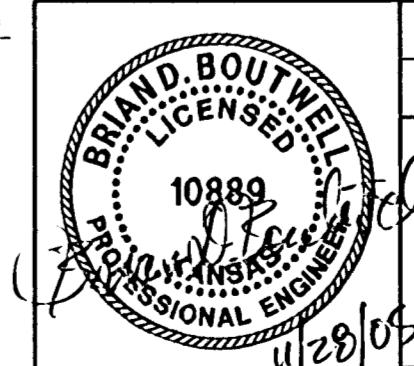
- (X) STD. BASEMENT
- (W.O.) WALK-OUT BASEMENT
- (V.O.) VIEW-OUT BASEMENT
- STORM WATER FLOW
- X SPOT ELEVATION
- W.O. WALK-OUT
- V.O. VIEW-OUT
- T.F. TOP OF FOUNDATION
- B.F. BASEMENT FLOOR ELEVATION
- Pod ELEVATION AT GARAGE DOOR OPENING

VO OR WO WAS CONSIDERED ACCEPTABLE IF THE TOP OF FOUNDATION WAS 5' OR LESS ABOVE THE PROPERTY LINE.

MINIMUM PAD ELEVATIONS (LOWEST OPENING) SHALL BE AS FOLLOWS:

BLOCK	LOTS	CITY DATUM	N.C.V.D.
BLOCK 1	LOTS 6-7, 12-13	178.30	1365.15
	LOTS 8-11	176.90	1364.30
	LOTS 16-20	177.20	1364.60
	BLOCK 2	LOTS 4-5	167.00

DSNR: BLB OPER: BJS SCALE: 1"=50.00  
 C:\2005\05415\000\05415-000-C-4-CORNER 11-28-2005 08:22:54 am



No.	Revision	By	Date
	EVERGREEN 5TH		
<b>FOUR CORNER PLAN</b>			
JAMES L. ARMOUR, P.E.-CITY ENGINEER CITY OF WICHITA PROJECT NO. 472-84103 <b>Professional Engineering Consultants, P.A.</b> 303 S. TOPEKA - WICHITA, KANSAS 67202 316-262-2691 • FAX 316-262-3003			
Designed by	BDB, BMM	Job No.	35-05415-000
Drawn by	BJS, BMM	Date	July 2005
			Sheet 4 of 45