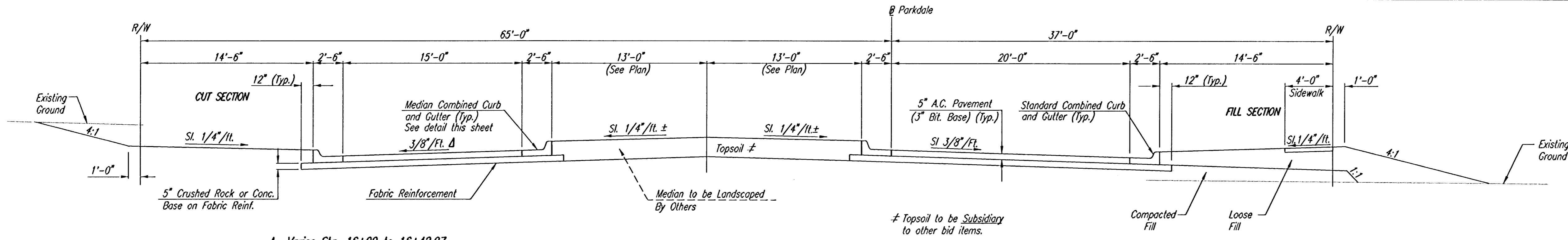


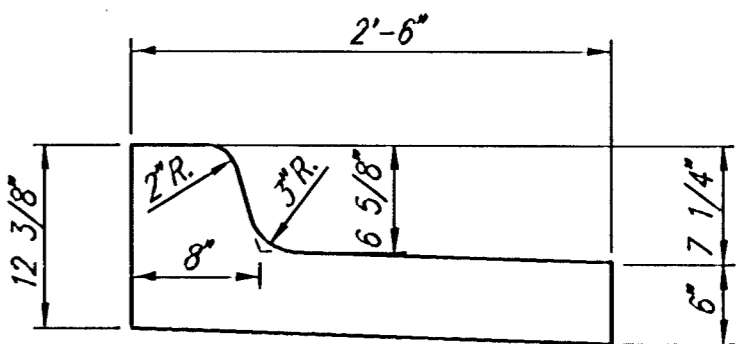
DSNR: BUB OPER: BUS SCALE: 1"=20.00'
 C:\2005\05415\000\05415-000-C-STR14-17 11-28-2005 09:34:33 am



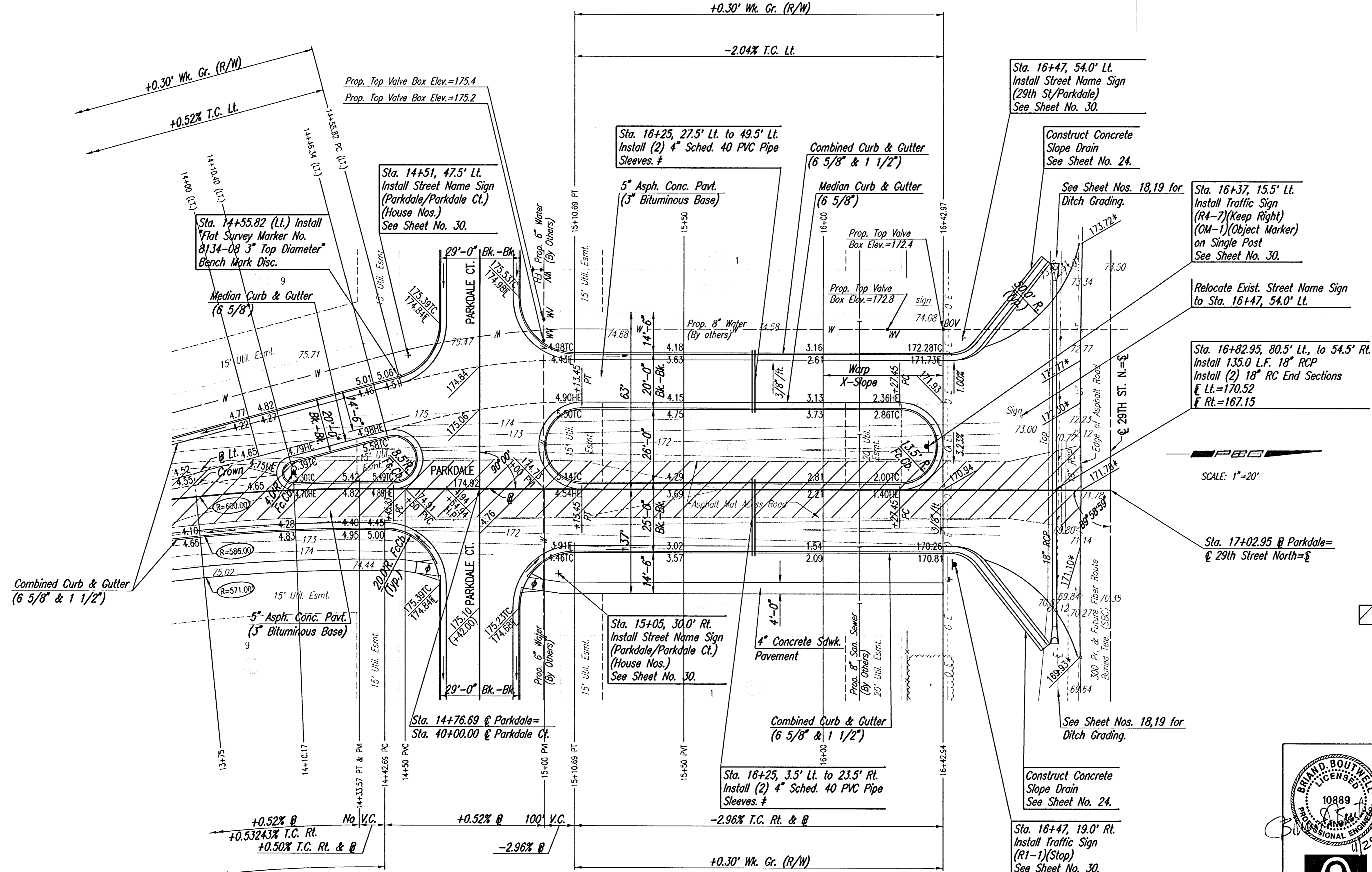
Δ Varies Sta. 16+00 to 16+42.97.

TYPICAL SECTION
Sta. 15+13.45 to Sta. 16+27.45

WATER VALVE BOX ELEVATIONS			
STREET	STATION	OFFSET	PROPOSED ELEVATION
PARKDALE	14+99.7	52.9' Lt.	175.1
PARKDALE	14+99.7	60.4' Lt.	175.3
PARKDALE	16+34.97	57.0' Lt.	172.6
PARKDALE	16+42.97	57.0' Lt.	172.4

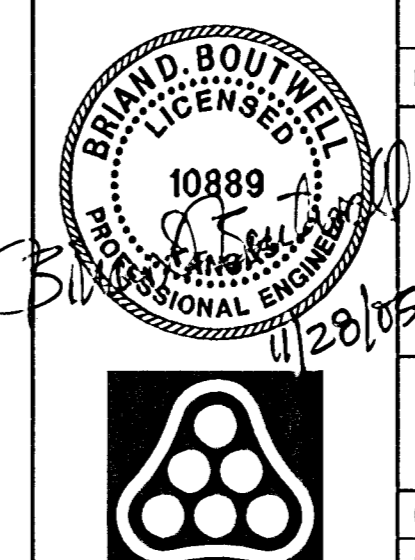


MEDIAN COMBINED CURB & GUTTER
(6 5/8")



SCALE: 1"=20'

- * Match Existing
- ◊ Construct Std. Wheelchair Ramp
- ▨ Asphalt Mat Removal (5" Thickness)
(Paid for as "Unclassified Excavation")
- ‡ Sleeves to be 42" Below Top of Curb.
Each End of 4" PVC Pipe Sleeves Shall be Capped and Marked with Steel "T" Posts or 2" Dia. Steel Pipe a Maximum of 12" above Finished Grade. Pipe, Caps, Markers, and Installation Shall be Subsidiary to Median Comb. Curb & Gutter (6 5/8").



No.	Revision	By	Date
	EVERGREEN 5TH		
PARKDALE			
STA. 14+00 TO STA. 17+02.95			
JAMES L. ARMOUR, P.E.—CITY ENGINEER CITY OF WICHITA PROJECT NO. 472-84103			
Professional Engineering Consultants, P.A.			
303 S. TOPEKA • WICHITA, KANSAS 67202 316-262-2691 • FAX 316-262-3003			
Designed by	BDB, BMM	Job No.	35-05415-000
Drawn by	BUS, BMM	Date	July 2005
			Sheet 8 of 45