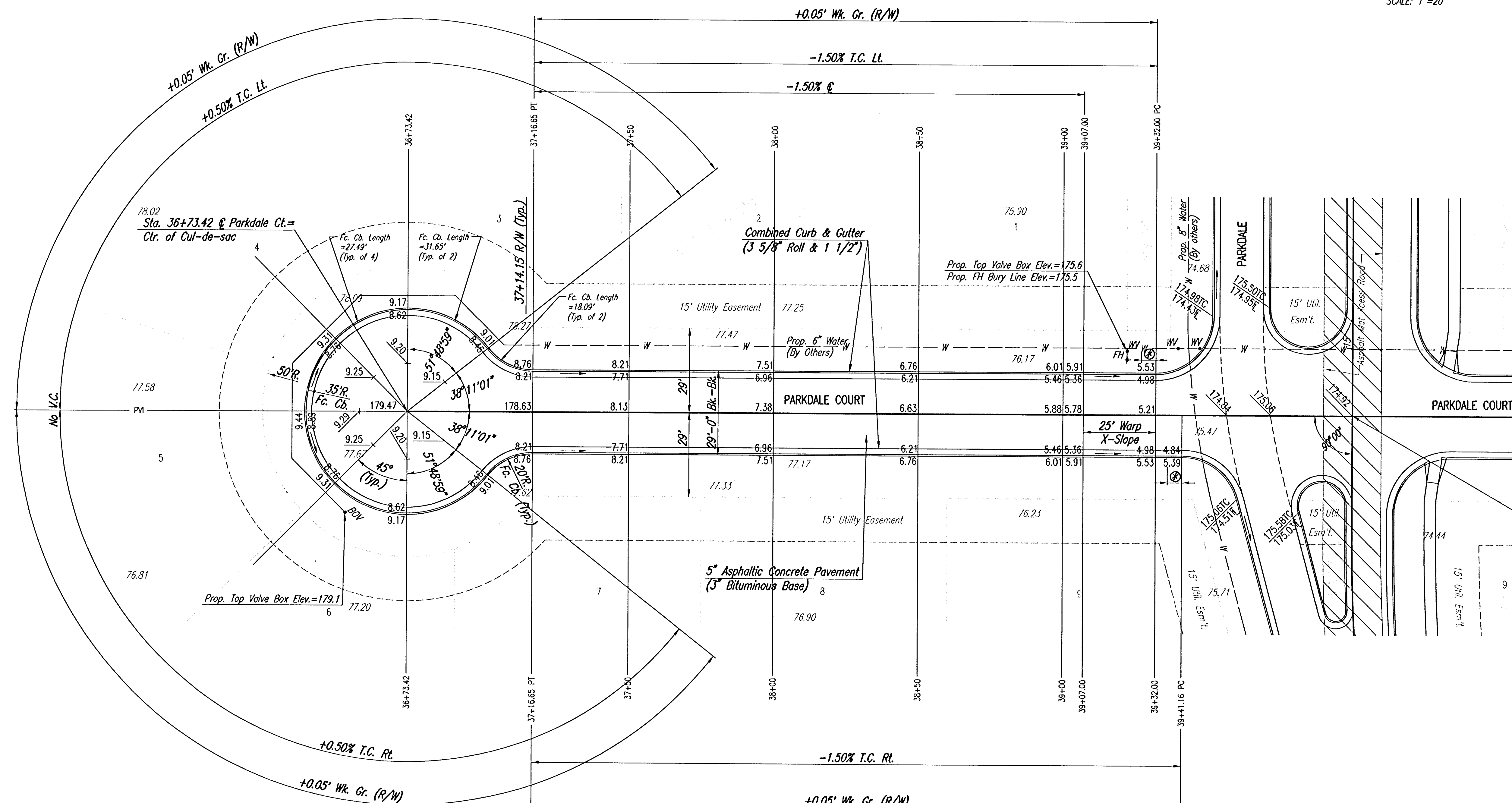


WATER VALVE BOX ELEVATIONS			
STREET	STATION	OFFSET	PROPOSED ELEVATION
PARKDALE COURT	36+52.08 (Extd.)	34.8' RT.	179.1
PARKDALE COURT	36+22.00	22.0' LT.	175.6

SCALE: 1"=20'

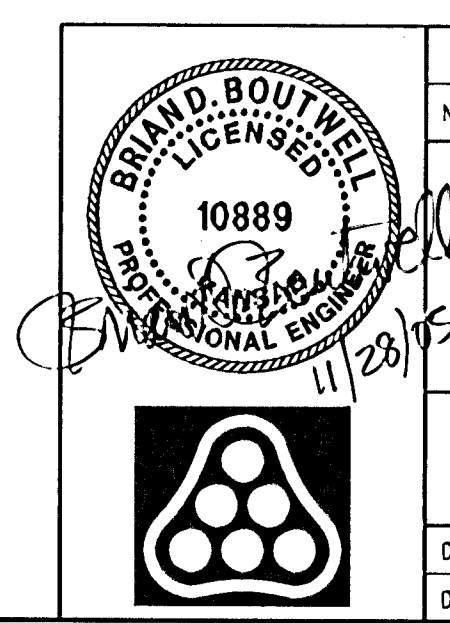


Sta. 40+00.00 @ Parkdale Ct. =
Sta. 14+76.69 @ Parkdale

⑤ 5' Transition from Combined Curb and Gutter (3 5/8" Roll & 1 1/2") to Combined Curb and Gutter (6 5/8" & 1 1/2"). To be bid and paid for as "Combined Curb and Gutter (3 5/8" Roll & 1 1/2)".

NOTE: THIS STREET TO BE CONSTRUCTED WITH ROLL-TYPE CURB. TOP OF CURB ELEVATIONS GIVEN ARE FOR FULL HEIGHT CURB.

DSNR: BLB OPER: BUS SCALE: 1"=20.00
 G:\2005\05+15\000\05+15-000-C-STR36-40 11-28-2005 09:46:37 am



No.	Revision	By	Date
EVERGREEN 5TH PARKDALE COURT STA. 36+73.42 TO STA. 40+00.00 JAMES L. ARMOUR, P.E.-CITY ENGINEER CITY OF WICHITA PROJECT NO. 472-84103 Professional Engineering Consultants, P.A. 303 S. TOPEKA • WICHITA, KANSAS 67202 316-262-2691 • FAX 316-262-3003			
Designed by	BDB, BMM	Job No.	35-05415-000
Drawn by	BUS, BMM	Date	July 2005
			Sheet 11 of 45