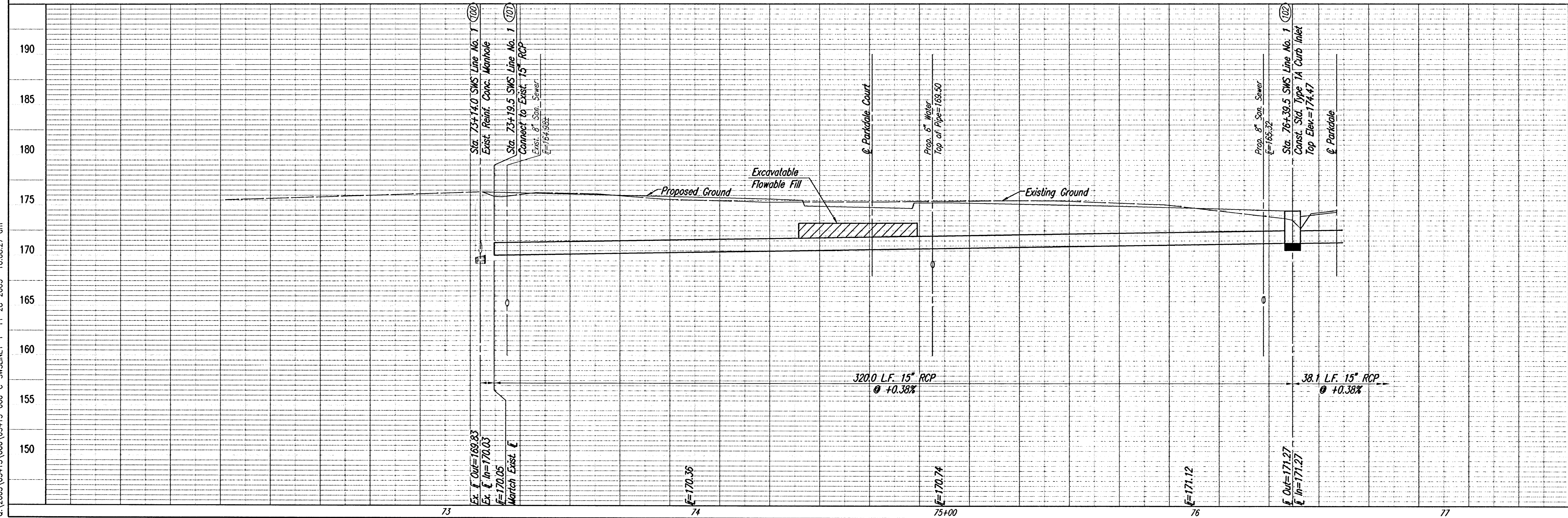


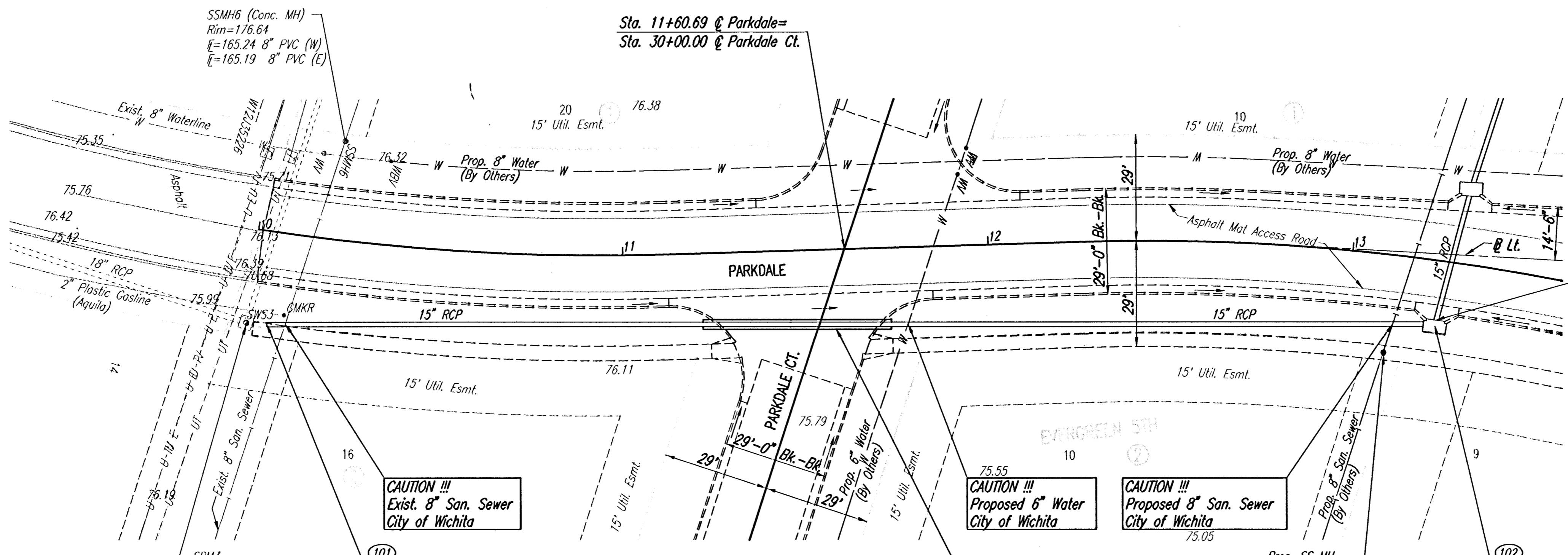
PLAN  
 CHECKED  
 CHECKED  
 BY  
 DATE

PROFILE  
 CHECKED  
 CHECKED  
 BY  
 DATE

DSNR-BLS OPER. BLS SCALE: 1"=20.00  
 C:\2005\05415\000\05415-000-C-SWSLINE1-1 11-28-2005 10:08:27 am



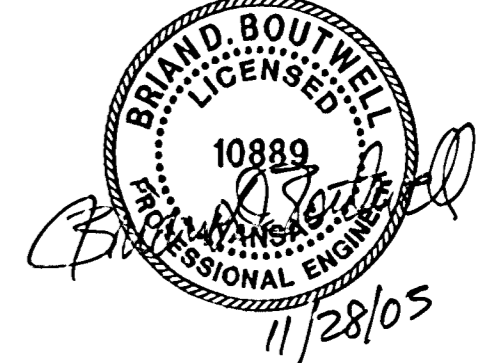
\* PRIOR TO BEGINNING CONSTRUCTION, THE CONTRACTOR SHALL EXCAVATE THE EXISTING 15" RCP AT STATION 73+19.5 TO VERIFY PIPE SIZE, TYPE, AND HORIZONTAL AND VERTICAL LOCATION. THE CONTRACTOR SHALL REPORT HIS FINDINGS TO THE ENGINEER SO THAT ANY NECESSARY PLAN MODIFICATIONS MAY BE MADE. ANY ADDITIONAL LABOR OR MATERIALS NECESSARY TO COMPLETE THE CONNECTION SHALL BE CONSIDERED SUBSIDIARY TO THE PROJECT.



COORDINATE LIST		
POINT	NORTH	EAST
100	9,590.4122	3,112.8647
101	9,595.9385	3,111.5522
102	9,900.2873	3,013.3734
106	9,900.0228	3,011.8969

100 = COORDINATE POINT NO.  
 SEE SHEET NO. 3 FOR PLAT COORDINATES

106  
 (Ctr. Inside Face)



**SWS LINE NO. 1**  
 EVERGREEN 5TH  
 JAMES L. ARMOUR, P.E.-CITY ENGINEER  
 CITY OF WICHITA PROJECT NO. 472-84103

Professional Engineering Consultants, P.A.  
 303 S. OPEKA, WICHITA, KANSAS 67202  
 316-262-2091 • FAX 316-262-3060  
 Designed By: B08, BLS, BMM  
 Job No.: 35-05415-000-042  
 Drawn By: BLS, BMM  
 Date: July 2005