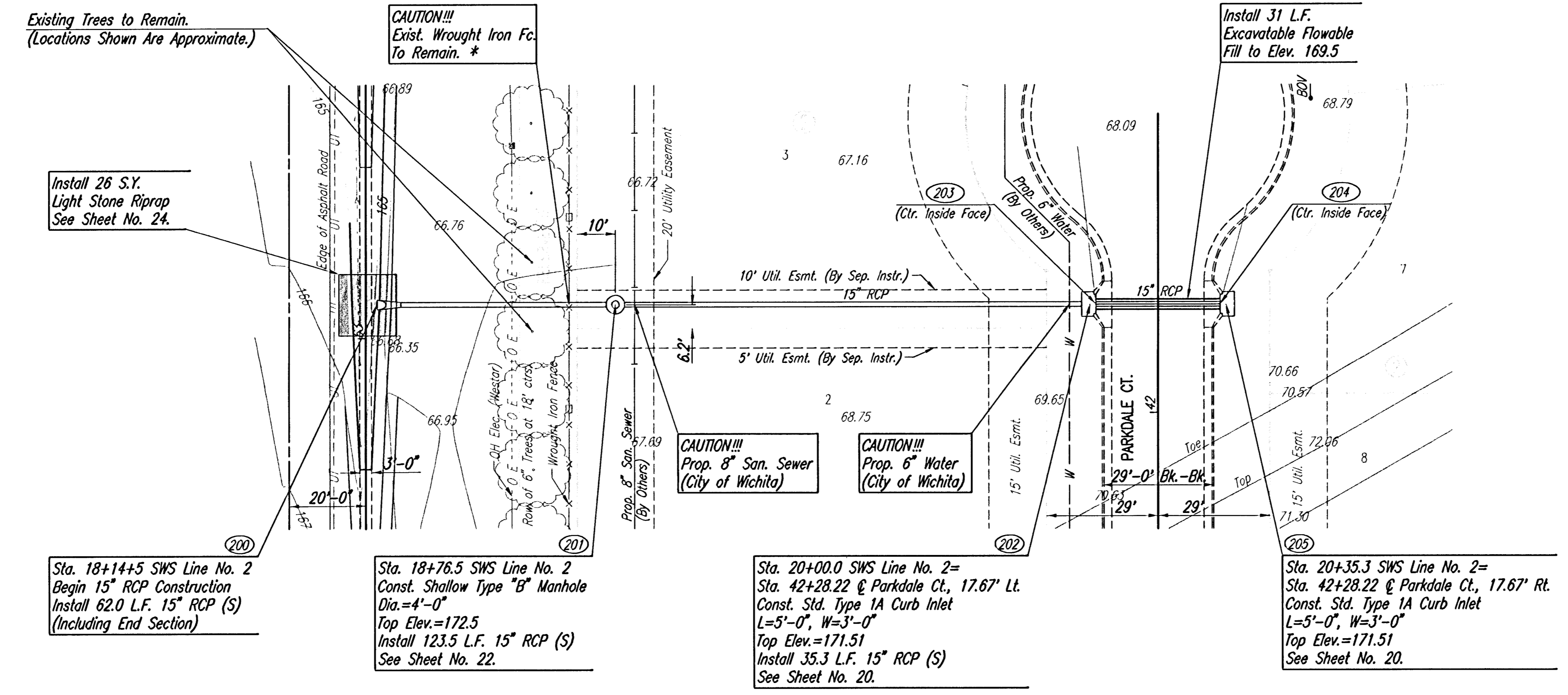


PLAN	CHECKED	DATE
	CHECKED	

PROFILE	CHECKED	DATE
	CHECKED	

DSNR, BLB, OPER, BUS, SCALE: 1"=20.00
 C:\2005\05415\000\05415-000-C-SWSLINE2 11-28-2005 10:30:59 am



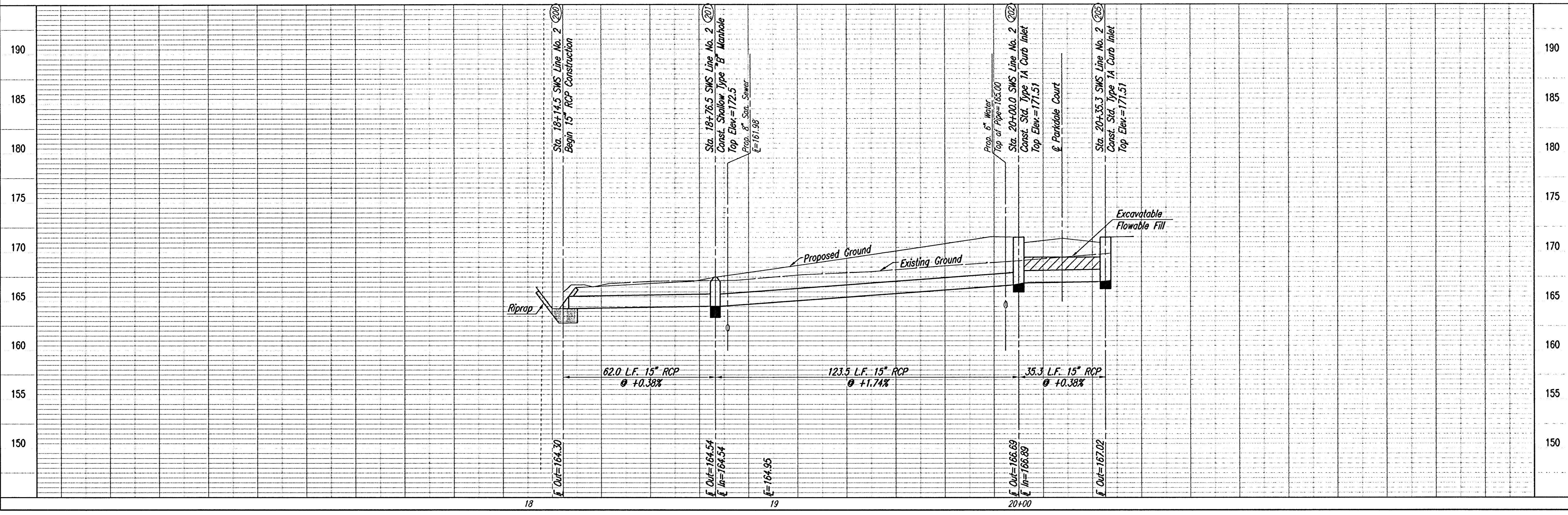
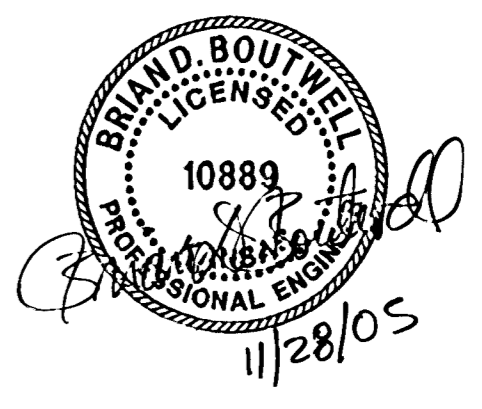
SCALE: 1"=20'

COORDINATE LIST		
POINT	NORTH	EAST
200	10,250.6500	3,215.7159
201	10,188.6505	3,215.4861
202	10,065.1282	3,215.0282
203	10,063.6282	3,215.0227
204	10,031.2884	3,214.9028
205	10,029.7885	3,214.8972

200 = COORDINATE POINT NO.
 SEE SHEET NO. 3 FOR PLAT COORDINATES

* EXISTING FENCE SECTION MAY BE REMOVED & REPLACED AS NECESSARY FOR CONSTRUCTION. AT PROJECT COMPLETION, FENCE SHALL BE IN PRE-CONSTRUCTION CONDITION (OR BETTER). ANY DAMAGE TO THE EXISTING FENCE SHALL BE REPAIRED BY THE CONTRACTOR AT NO EXPENSE TO THE OWNER.

CONTACT LINDA GRAHAM AT 316-268-0704 PRIOR TO REMOVAL TO COORDINATE ALL NECESSARY WORK INVOLVING THE EXISTING FENCE.



EVERGREEN 5TH

SWS LINE NO. 2

JAMES L. ARMOUR, P.E. - CITY ENGINEER
 CITY OF WICHITA PROJECT NO. 472-84103

Professional Engineering Consultants, P.A.
 303 S. TOPICKA • WICHITA, KANSAS 67202
 316-262-2691 • FAX 316-262-3003

Designed By: BOB, BLB, BMM
 B.S., BMM

Job No.: 35-05415-000-042
 Date: July 2005

Drawn By: B.S., BMM