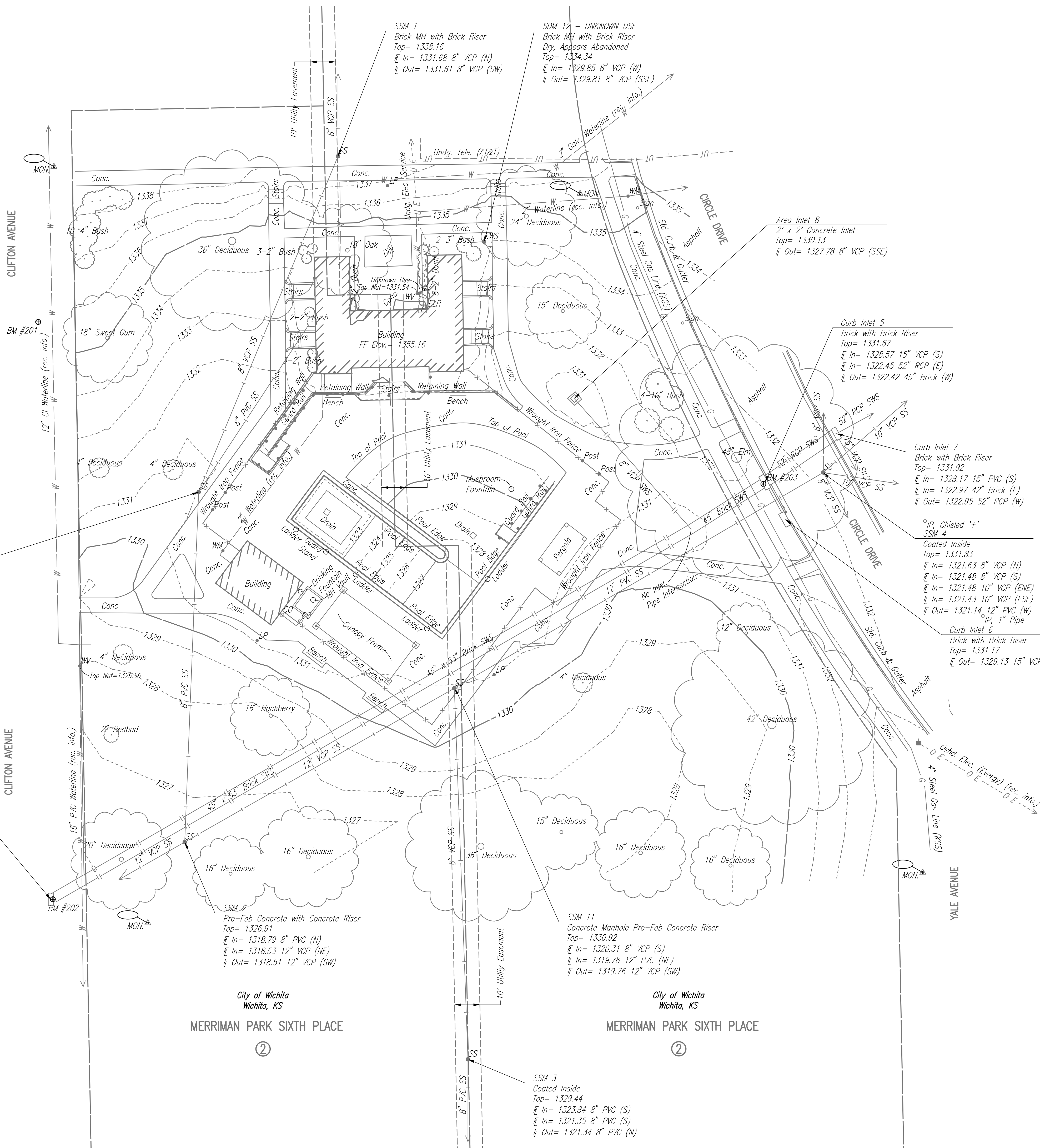


1/2" IP, 1/2" Pipe



BENCH MARK LIST BM #201

- BM 201. N: 1,684,457.4287, E: 1,661,244.4923  
ELEVATION: 1335.47 NAVD88  
CHISELED SQUARE ON BACK OF EAST CURB OF CLIFTON BETWEEN WATERMAN AND LEWIS ACROSS THE STREET FROM 327 CLIFTON, 1' NORTH OF NORTH EDGE OF EAST-WEST SIDEWALK SEGMENT.
- BM 202. N: 1,684,228.8891, E: 1,661,250.2933  
ELEVATION: 1325.92 NAVD88  
CHISELED SQUARE ON BACK OF CURB INLET ON EAST CURB OF CLIFTON ACROSS THE STREET FROM 343 S. CLIFTON.
- BM 203. N: 1,684,393.2904, E: 1,661,531.6136  
ELEVATION: 1331.89 NAVD88  
CHISELED SQUARE ON BACK OF NORTH OF 2 INLETS ON WEST CURB OF CIRCLE DRIVE, 150' NORTH OF INTERSECTION OF CIRCLE AND YALE.

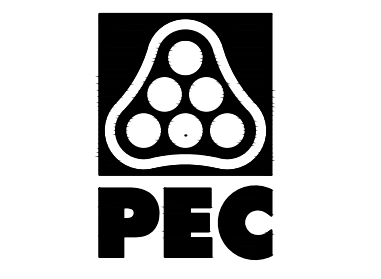
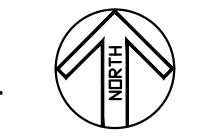
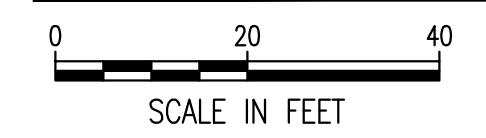
CONTROL POINTS

- CP-501. N: 1,684,518.9176, E: 1,661,250.7357  
1/2" REBAR WITH BLUE PEC CONTROL POINT CAP IN GRASS. 24.00' WEST TO CENTER LINE OF CLIFTON NORTH-SOUTH. 65.00' NORTH TO CENTER LINE OF WATERMAN WEST. 1.80' EAST TO FACE OF SIDEWALK. 11.70' SOUTHWEST TO CENTERLINE OF POWER POLE.
- CP-502. N: 1,684,219.4450, E: 1,661,287.8942  
1/2" REBAR WITH BLUE PEC CONTROL POINT CAP IN GRASS 55.00' WEST TO CENTERLINE OF CLIFTON NORTH-SOUTH. 13.00' NORTH TO SOUTH EDGE OF CURVILINEAR SIDEWALK. 25.00' WEST TO BACK OF SIDEWALK. 35.40' NORTH-NORTHEAST TO CENTER OF MANHOLE.
- CP-503. N: 1,684,239.4756, E: 1,661,594.7156  
1/2" REBAR WITH BLUE PEC CONTROL POINT CAP IN GRASS. 44.00' NORTHEAST TO CENTERLINE INTERSECTION OF CIRCLE DRIVE AND YALE. 44.50' NORTH TO SOUTH EDGE OF WHEEL CHAIR RAMP. 2.60' EAST TO BACK OF WEST CURB OF YALE. 56.50' SOUTH TO CENTER OF 30" ELM TREE.
- CP-504. N: 1,684,508.2374, E: 1,661,459.0459  
1/2" REBAR WITH BLUE PEC CONTROL POINT CAP IN GRASS. 6.20' NORTH TO SOUTH EDGE OF SIDEWALK. 7.20' EAST TO WEST EDGE OF SIDEWALK. 29.40' WEST TO 3 STAIRS IN SIDEWALK. 38.00' +/- EAST-NORTHEAST TO CENTERLINE OF CIRCLE DRIVE.

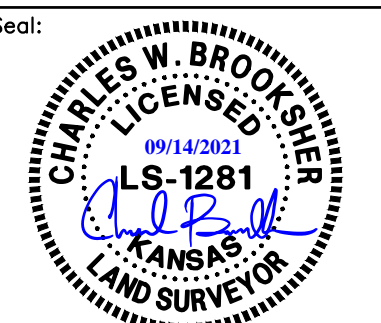
LEGEND

- Deciduous Tree
- Benchmark
- Power Pole
- Electric Box
- Gate Post
- Monument
- Sanitary Sewer Manhole
- Fire Hydrant
- Water Meter
- Water Valve
- Existing Spot Elevation
- Major Contour
- Minor Contour
- Guard Rail
- Overhead Electric
- Buried Electric
- Sanitary Sewer
- Storm Sewer
- Waterline
- Fence Types

EXISTING CONDITIONS



WICHITA, KANSAS  
Pool Improvements  
COLLEGE PARK



Charles Brooker - Licensed Surveyor  
LICENSE #1281  
Date: 05-20-19 Job #: 18-512  
Drawn: Checked:  
Issue: DESIGN DEVELOPMENT

EXISTING CONDITIONS

SV-01

Save: 04-10-2020 9:06:46 AM by RT  
Plot Scale: 1:245.2402 09-14-2021 10:37:08 AM by H  
U:\Wichita-Civil\2018\180189-001\Mun\Drawings\College Hill\180189-001-SV-01-Existing Conditions