

# STREET IMPROVEMENTS

**Fawn Grove from the West line of lot 65 to the East line of Lot 30  
Smithmoor/Smithmoor Cir. from the south line of Fawn Grove**

**at Sunset Lakes Addition to and including cul-de-sac  
Chateau Cir. from north line of Fawn Grove to and including cul-de-sac**

## FAWN GROVE PHASE 2 ADDITION

PROJECT NO. 472-84285

OCA NO. 765965

### GENERAL NOTES

A saw cut of at least one-half the depth of existing surface courses or one-fourth the depth of existing total pavement thickness shall be provided at locations where proposed construction abuts an existing surface course or pavement for which partial removal of that surface or pavement is required, except when such saw cuts are within three (3) feet of an existing joint the limits of removal shall be extended to the existing joint. Such saw cuts will not be paid for directly and this cost shall be considered as subsidiary to the removal of the surface or pavement.

Rubble from the removal of miscellaneous structures and excess excavation which is to be wasted shall be disposed of on sites to be provided by the Contractor. These sites shall be approved by the Engineer as to suitability, appearance and site location. Locations that, in the opinion of the Engineer, will leave an unsightly appearance will not be approved.

All disposal sites must be approved by the Kansas Department of Health and Environment. Material either stockpiled or disposed of in a flood plain would require a Kansas State Board of Agriculture permit. Any material dumped in waters of the United States or wetlands is subject to U.S. Corps permitting regulations. Any material buried or stockpiled beyond approved of Engineers construction limits would require additional archeological investigations unless buried in a previously approved borrow location.

Limits of earthwork shall match existing ground elevations at the right-of-way line unless otherwise noted on the plans with a new finished grade elevation. When a new finished grade elevation is shown, the earthwork shall extend one foot beyond the right-of-way line and then sloped up or down using permissible slopes to match the existing ground surface.

The Contractor shall be responsible for preserving property irons. The Contractor will be required to re-establish any property irons which are damaged or destroyed by his construction operations. Such irons shall be re-established by a licensed land surveyor in accordance with state laws.

The Contractor shall give all property owners and/or tenants of developed property directly abutting the construction of this project a minimum of ten (10) days advance notice prior to start of construction.

Underground utility service lines and overhead utility pole lines are to be adjusted as necessary by others prior to construction unless the plans specifically call for their adjustment by the Contractor or unless the plans specifically identify a utility to be adjusted by its owner during construction. Existing utilities and their location, as shown on the plans, represent the best information obtainable for design. Location information has been obtained from the various utility companies and is either from company record drawings or company-provided field locations. The Contractor will be required to work around existing utilities within the right-of-way which do not conflict with proposed construction.

The Contractor shall notify pipeline companies at least 24 hours in advance of any work being performed across and/or adjacent to pipelines.

The Contractor shall seed, fertilize and mulch all disturbed areas per City specifications upon completion of construction.

Subdivision Bench Marks shall be "Flat Survey Markers No. 8134-08 3" top diameter" provided by Kansas Blue Print Co., Inc. Bench mark installation cost to be subsidiary to curb & gutter.

All excess fill shall be wasted on site at a location approved by the Engineer.

Contractor shall ensure easement grades are restored upon completion of work within drainage and utility easements. Cost subsidiary to bid item for site clearing and restoration.

Contractor will be required to provide a minimum advance notice of twenty-four (24) hours to utility companies prior to starting any excavation as follows:

Kansas One-Call 687-2470

The Contractor must notify the following in case of an emergency:

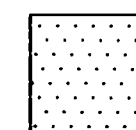
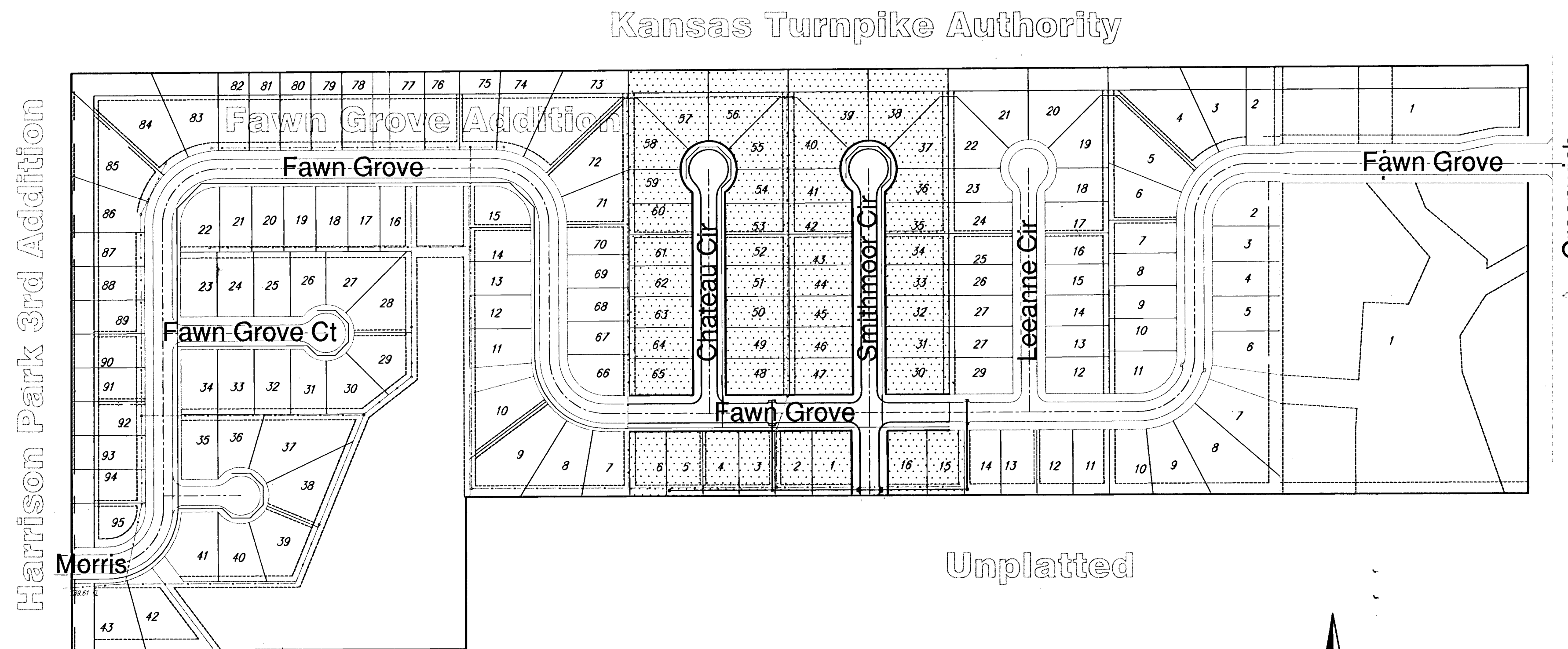
Cox Communications	262-0661
Kansas Gas Service	383-8600
Westar Energy	383-8600
Aquila	1-800-303-0357
SBC	1-800-286-8313
City of Wichita Water Department	262-6000
City of Wichita Sewer Maintenance	262-6000

### BENCH MARK

BENCH MARK: COW BENCHMARK AT GREENWICH AND LINCOLN, NORTHWEST CORNER OF DOUBLE 4'X6' RCBC, ON HUBGUARD, IN FRONT OF 930 S. GREENWICH. ELEV.=1334.02 (NGVD)

### INDEX OF SHEETS

1. TITLE SHEET
2. 35' TYPICAL SECTION
3. 29' TYPICAL SECTION
4. VALLEY GUTTER DETAILS
5. WHEELCHAIR RAMP
6. SIGN DETAILS
7. FAWN GROVE
8. CHATEAU CIR.
9. SMITHMOOR CIR.
10. SMITHMOOR
11. SHALLOW TYPE P MH
12. STANDARD TYPE P MH
13. TYPE 1A INLET (SINGLE)
14. TYPE 1A INLET (DOUBLE)
- 15-17. BMP DETAILS
18. SITE SPECIFIC BMP DETAILS
19. SWS LINE 1
20. SWS LINE 2
21. ADDITION BUBBLE MAP
22. STREET BUBBLE MAP
23. STORM SEWER BUBBLE MAP
24. CROSS SECTIONS
- 25-30. CROSS SECTION QUANTITIES
31. FINAL PLAT

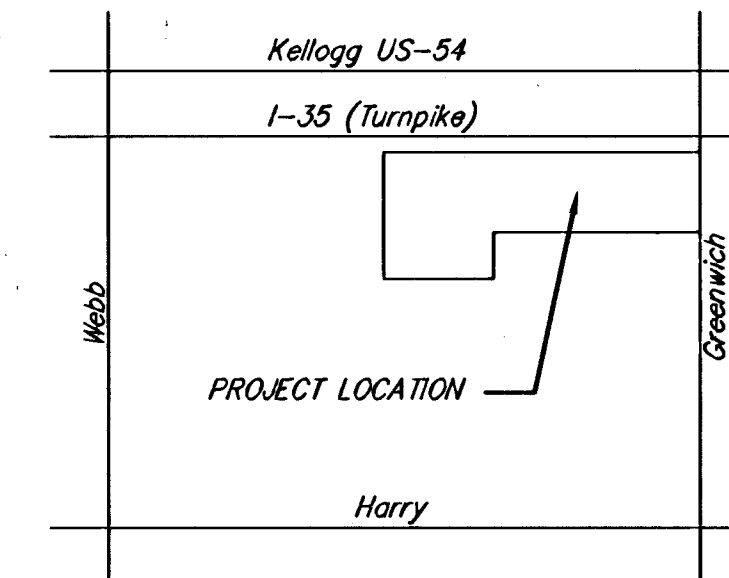


**IMPROVEMENT DISTRICT**

PROJECT LENGTH = 1538 L.F.  
EXCAVATION = 2964 C.Y.  
COMPACTED FILL = 158 C.Y.

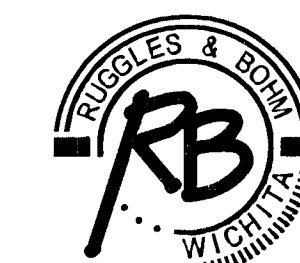


Scale: 1" = 150'



VICINITY MAP

**CITY OF WICHITA, KANSAS**  
**JAMES L. ARMOUR, P.E. - CITY ENGINEER**



**Ruggles & Bohm, P.A.**  
Engineering, Surveying, Land Planning  
924 North Main (316) 284-8008  
Wichita, Kansas 67203 (316) 284-4621 fax  
www.rbkansas.com E-mail: info@rbkansas.com