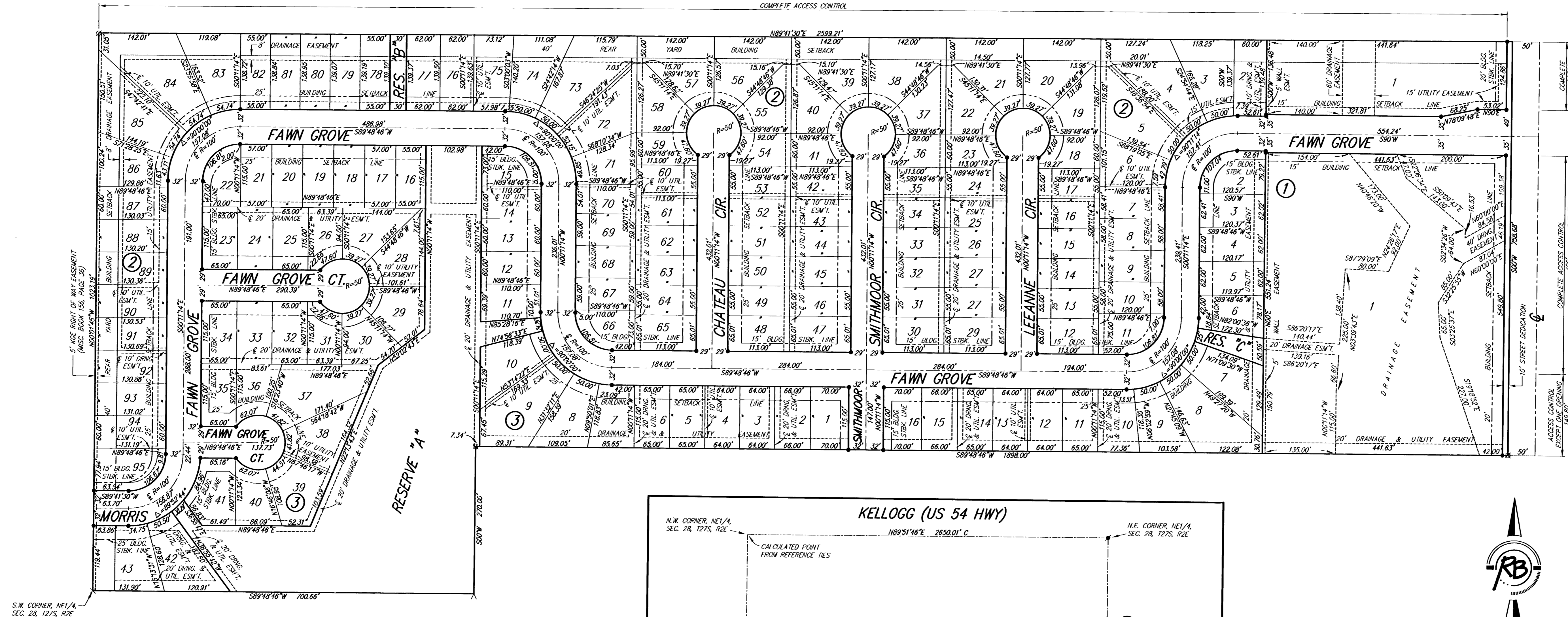


# FAWN GROVE AT SUNSET LAKES

an Addition to Wichita, Sedgwick County, Kansas

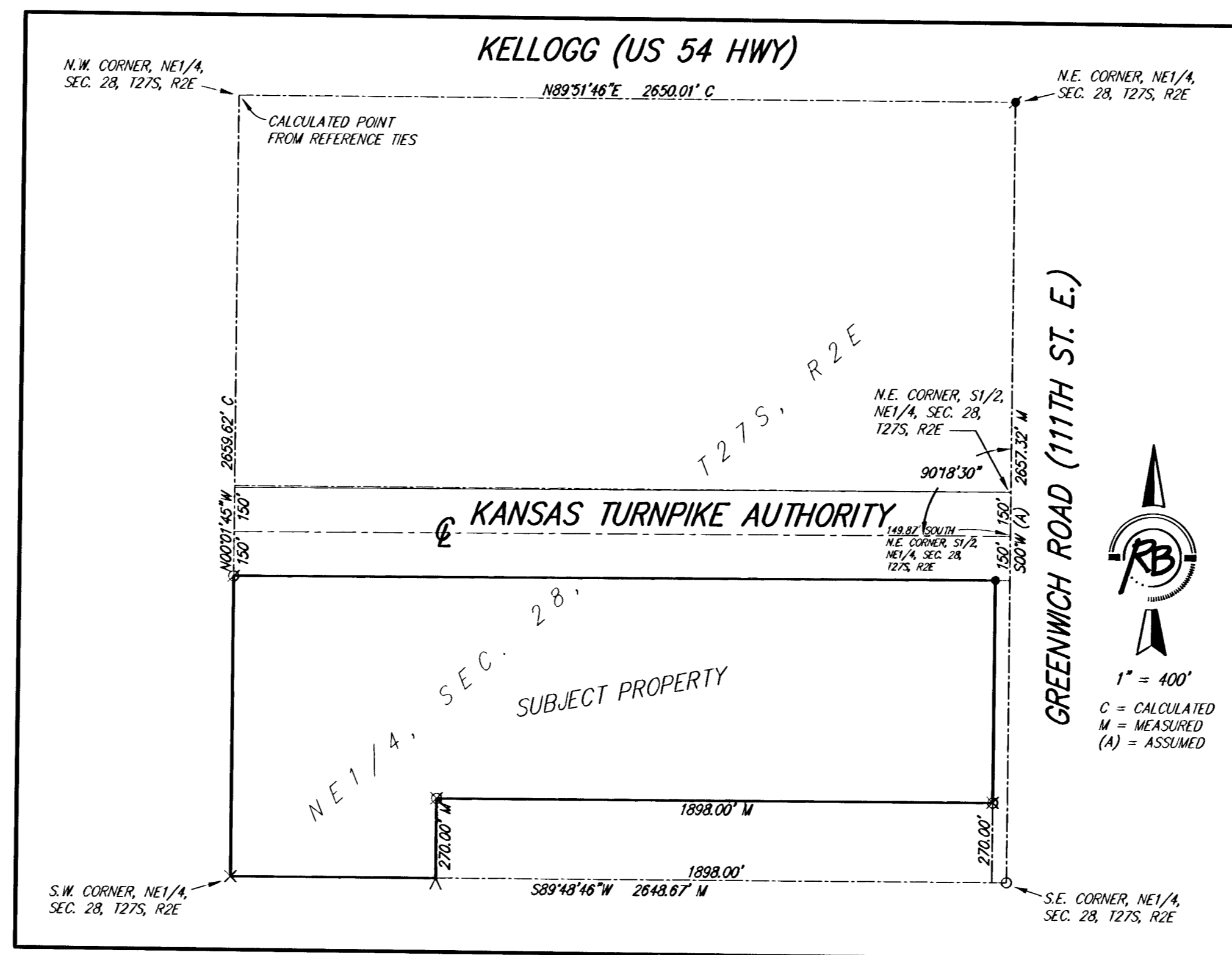
KANSAS TURNPIKE AUTHORITY  
COMPLETE ACCESS CONTROL



S.W. CORNER, NE 1/4, SEC. 28, T27S, R2E

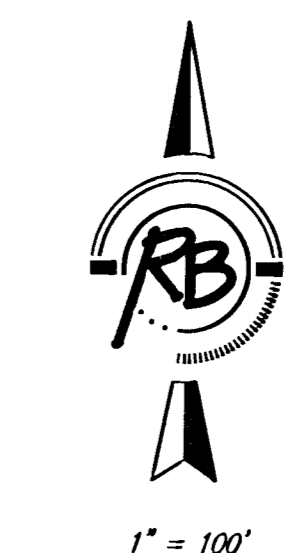
BLOCK	LOT NO.	ELEVATION (M.G.V.D.)
1	1, 2, 3, 4, 5, 6, 7, 8	1340.0
2	1, 2	1344.0
3	9, 10, 11, 12, 13, 14, 15, 16, 28, 29, 30, 37, 38, 39, 40, 41, 42	1342.0

THIS PLAN OF FAWN GROVE AT SUNSET LAKES AN ADDITION TO WICHITA, SEDGWICK COUNTY, KANSAS IS SUBJECT TO A WESTAR EASEMENT RECORDED AS FILM 518, PAGE 790.



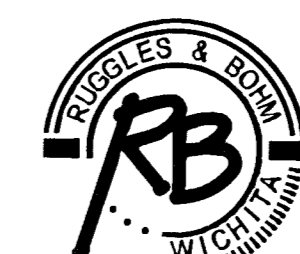
S.W. CORNER, NE 1/4, SEC. 28, T27S, R2E

S.E. CORNER, NE 1/4, SEC. 28, T27S, R2E



- SURVEY MARKER LEGEND**
- = 1/2" IRON PIPE (FOUND)
  - ⊙ = 3/4" IRON PIPE W/PEC CAP (FOUND)
  - × = CHISELED CROSS (FOUND)
  - ∨ = CHISELED NOTCH (FOUND)
  - = 1/2" REBAR (FOUND)
  - ✱ = 5/8" REBAR (FOUND)
  - ⊠ = 1/2" REBAR W/R&B CAP (FOUND)
  - = 5/8" REBAR W/R&B CAP (SET)

BENCH MARK: COW BENCHMARK AT GREENWICH AND LINCOLN, NORTHWEST CORNER OF DOUBLE 4"X6" REDG. ON GUARDRAIL, IN FRONT OF 530 S. GREENWICH. ELEV.=1334.02 (NGVD)



**Ruggles & Bohm, P.A.**  
Engineering, Surveying, Land Planning  
924 North Main  
Wichita, Kansas 67203  
www.rbkansas.com  
(316) 264-8008  
(316) 264-4621 fax  
E-mail: info@rbkansas.com

DWG FILE: 2422P  
PROJECT NO. 2422P  
MARCH 18, 2004