

BENCHMARKS:
 BM #1: "□" CL face of catch basin, west side of Lot 4, Block 5, Falcon Falls Addition. Elev. = 1352.47 MSL

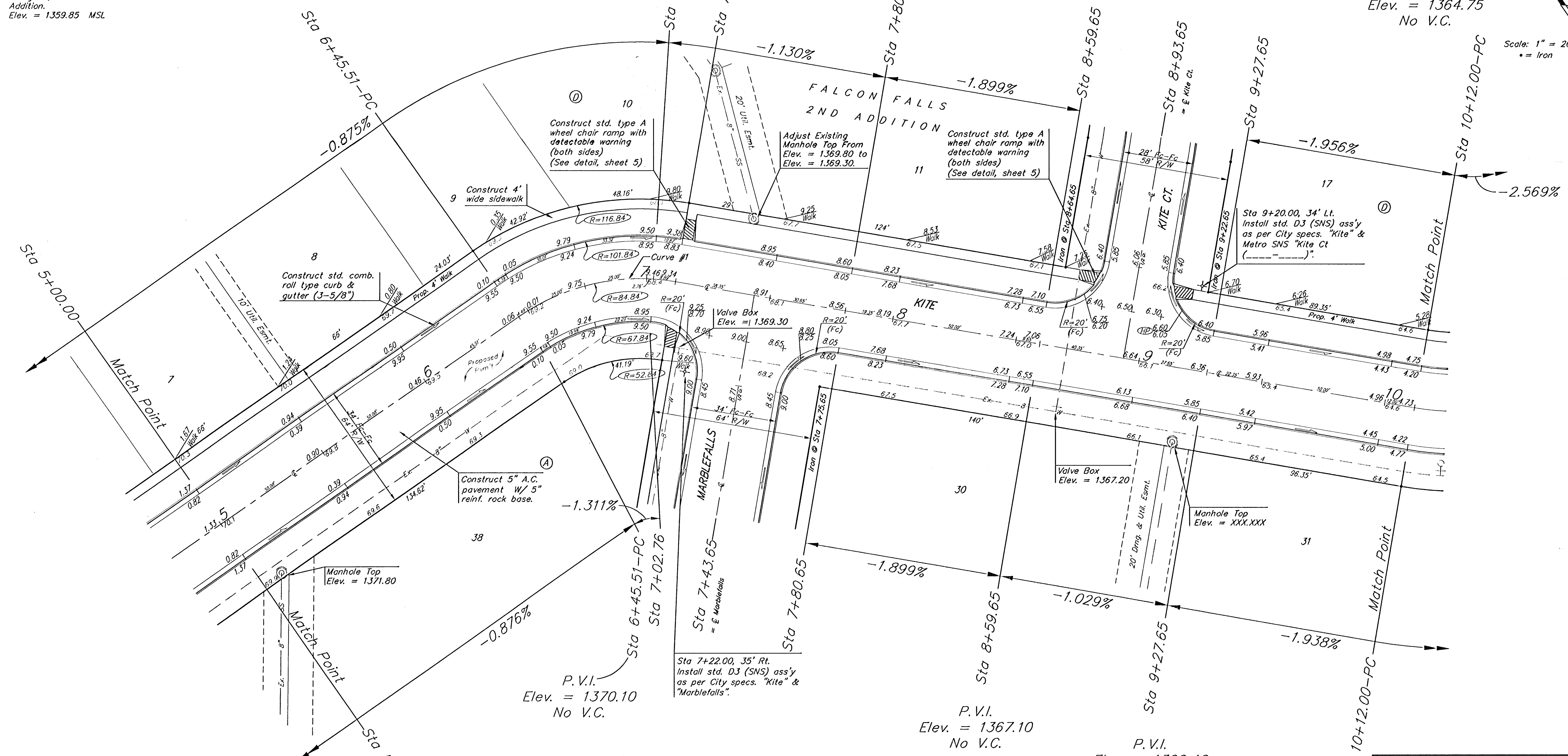
BM #2: "□" south end of the south curb return at Kite and Peregrine, Falcon Falls Addition. Elev. = 1359.85 MSL

P.V.I.
 Elev. = 1369.50
 No V.C.

P.V.I.
 Elev. = 1368.60
 No V.C.

P.V.I.
 Elev. = 1364.75
 No V.C.

Scale: 1" = 20'
 • = Iron



Curve #1
 Curve Data Based on Centerline
 Rad. = 84.84' Delta = 44° 39' 45" Tangent = 34.85'
 Arc = 66.14' L.C. = 64.47' Del/ft. = 20.25816 Min.

| Station | Arc | FACE CHORD LENGTHS | | Defl. | T. Defl. |
|---------|--------|--------------------|--------|----------|-----------|
| | | B' Lt. | B' Rt. | | |
| 8+45.51 | - | - | - | 0°00'00" | 0°00'00" |
| 6+50.00 | 4.49' | 5.81' | 3.17' | 1°30'57" | 1°30'57" |
| 6+75.00 | 25.00' | 32.25' | 17.57' | 8°26'27" | 9°57'25" |
| 7+00.00 | 25.00' | 32.25' | 17.57' | 8°26'27" | 18°23'52" |
| 7+02.76 | 2.76' | 3.57' | 1.95' | 0°55'55" | 19°19'47" |
| 7+11.65 | 8.89' | 11.50' | 6.22' | 3°00'06" | 22°19'52" |

NOTE: ROLL TYPE CURB & GUTTER TO BE CONSTRUCTED ON THE PAVEMENT SHOWN ON THIS SHEET. TOP OF CURB ELEVATIONS ARE GIVEN FOR FULL HEIGHT CURB.

| | | |
|--|--|---------------------------|
| | FALCON FALLS 2ND ADD. - PH. I | |
| | KITE STA 5+00.00 TO STA 10+12.00 | |
| <small>Baughman Company, P.A. 315 E. 11th St. Wichita, KS 67211 P:316-262-7771 F:316-262-0149 ENGINEERING SURVEYING PLANNING LANDSCAPE ARCHITECTURE</small> | | |
| PROJECT NUMBER 47284264 | DESIGN TJW | DRAWN TMS |
| REVISIONS | APPROVED AEG | DATE 01/06 |
| SCALE Note 1 | | SHEET 7 OF 44 |
| <small>Falcon Falls 2nd PH I Set 2</small> | | <small>05-10-E376</small> |