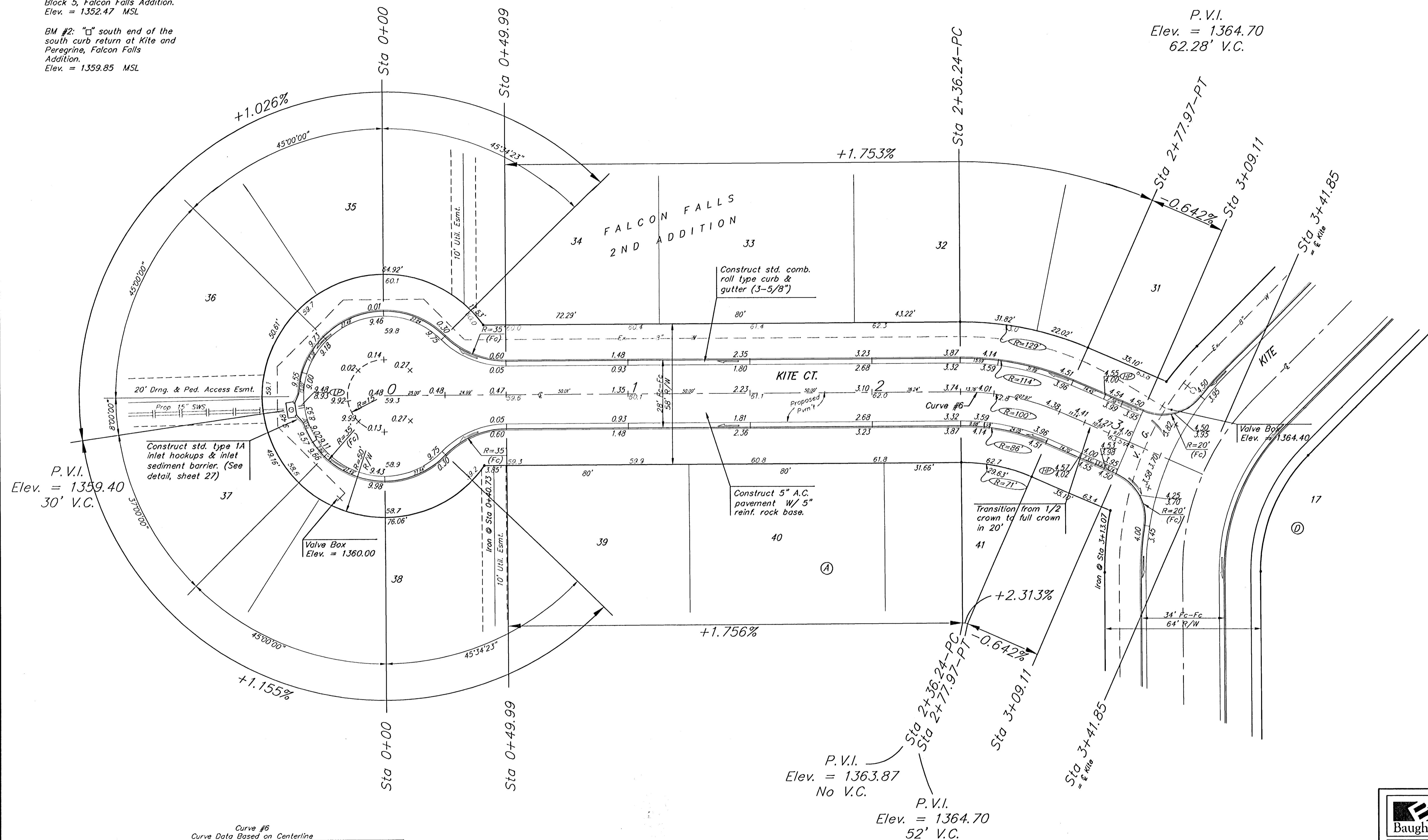


BENCHMARKS:
 BM #1: "□" CL face of catch basin, west side of Lot 4, Block 5, Falcon Falls Addition. Elev. = 1352.47 MSL
 BM #2: "□" south end of the south curb return at Kite and Peregrine, Falcon Falls Addition. Elev. = 1359.85 MSL

Scale: 1" = 20'
 • = Iron



Curve #6
 Curve Data Based on Centerline
 Rad. = 100' Delta = 23° 54' 35" Tangent = 21.17'
 Arc = 41.73' L.C. = 41.43' Def/Fl. = 17.18887 Min.

Station	Arc	FACE CHORD LENGTHS		Defl.	T. Defl.
		8' Lt.	8' Rt.		
2+36.24	-	-	-	0'00"00"	0'00"00"
2+50.00	13.76'	16.77'	10.72'	3'56.31"	3'56.31"
2+75.00	25.00'	30.42'	19.45'	7'09.43"	11'06.14"
2+77.97	2.97'	3.62'	2.32'	0'51.03"	11'57.17"

NOTE: ROLL TYPE CURB & GUTTER TO BE CONSTRUCTED ON THE PAVEMENT SHOWN ON THIS SHEET. TOP OF CURB ELEVATIONS ARE GIVEN FOR FULL HEIGHT CURB.

Baughman FALCON FALLS 2ND ADD. - PH. I
KITE CT. LOTS 31-41, BLOCK A
 STA 0+00 TO STA 3+41.85

Baughman Company, P.A. 315 Ellis St. Wilkes, NJ 07181 P 310-262-7211 F 310-262-0149
 ENGINEERING | SURVEYING | PLANNING | LANDSCAPE ARCHITECTURE

PROJECT NUMBER: 472-84264 DESIGN: TJW DRAWN: TMS
 APPROVED: AEG DATE: 01/06
 REVISIONS: SCALE: Noted SHEET: 12 OF 44

Falcon Falls 2nd PH I S07 05-10-E376