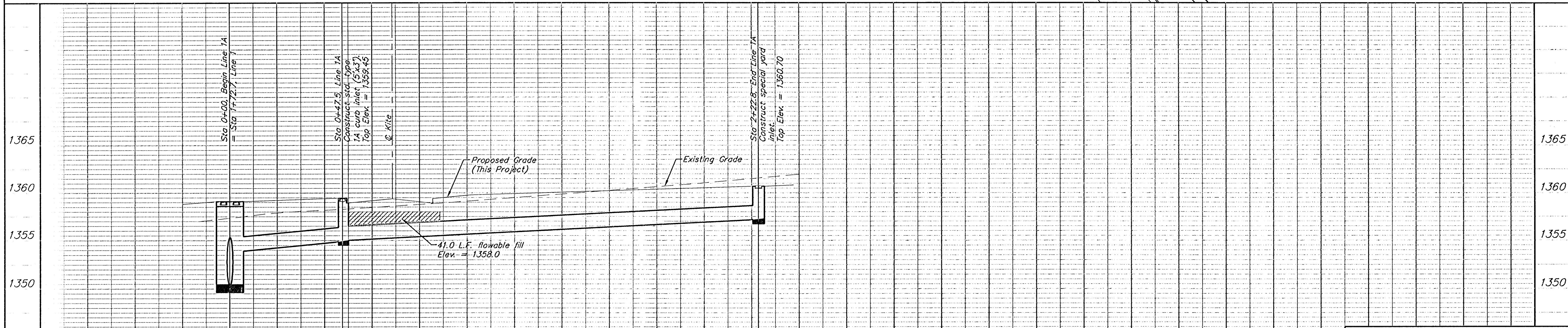
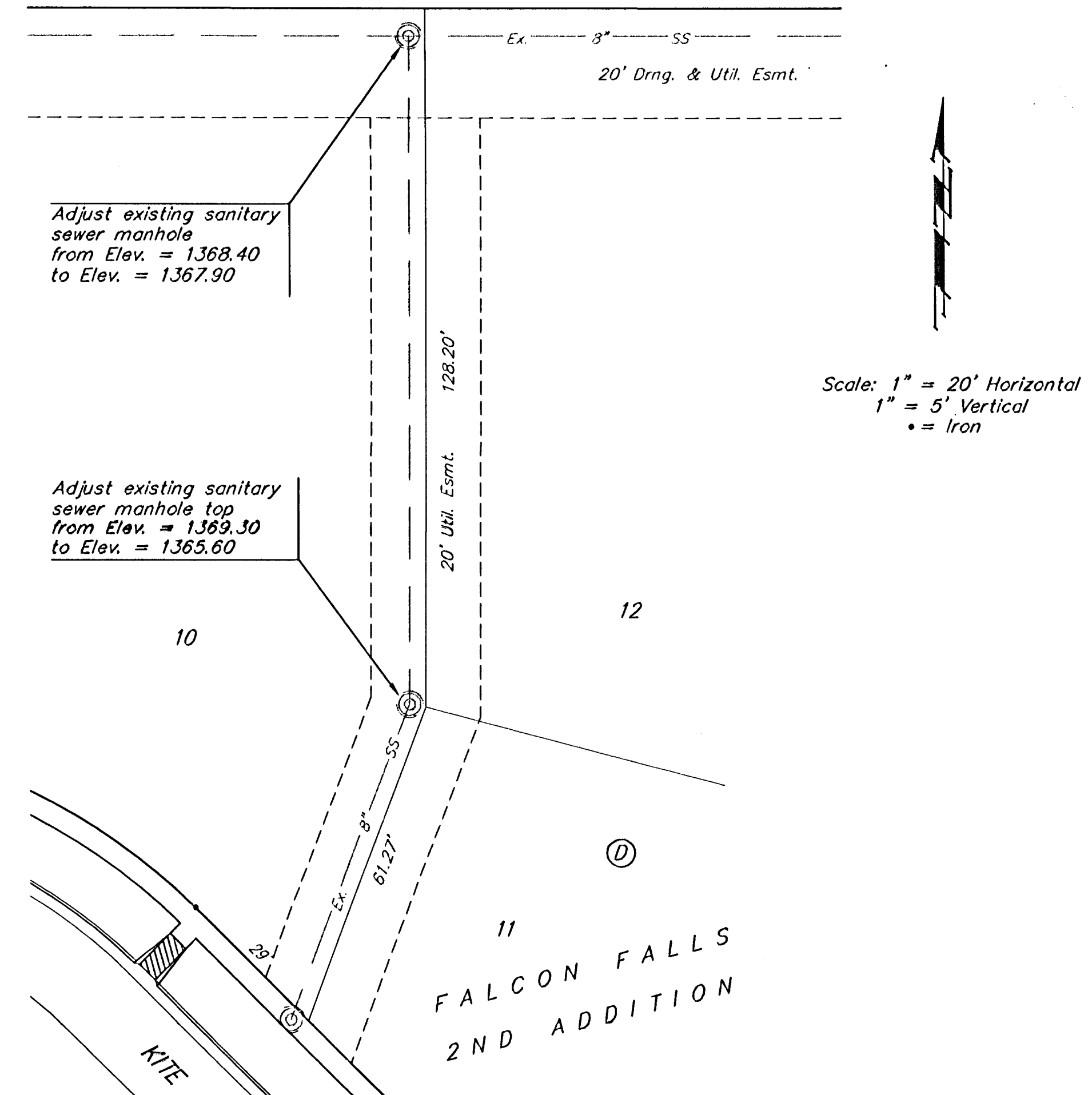
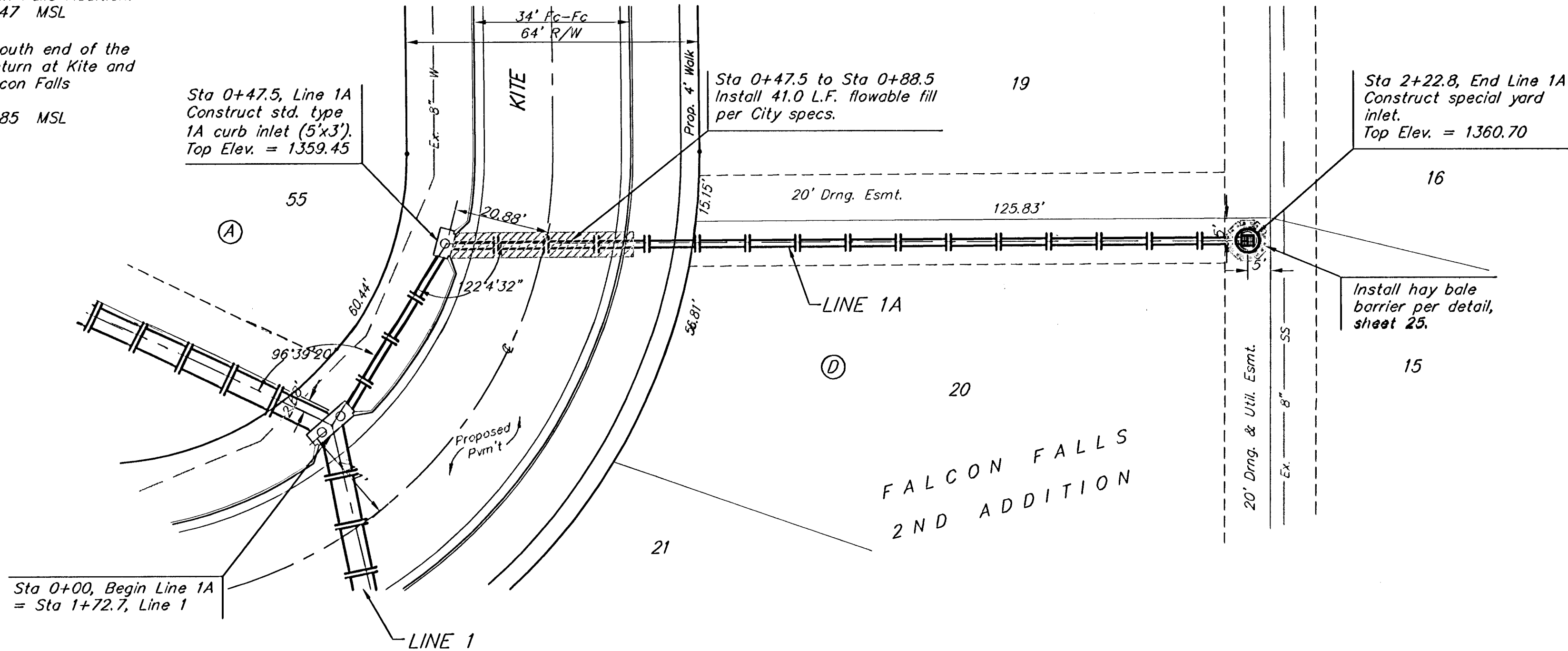


**BENCHMARKS:**

BM #1: "□" CL face of catch basin, west side of Lot 4, Block 5, Falcon Falls Addition. Elev. = 1352.47 MSL

BM #2: "□" south end of the south curb return at Kite and Peregrine, Falcon Falls Addition. Elev. = 1359.85 MSL



		<b>FALCON FALLS 2ND ADDITION - PH. 1</b> <b>LINE 1A</b> STORM WATER SEWER IMPROVEMENTS	
<small>Baughman Company, P.A. 313 E. 11th St. Wichita, KS 67211 P 316-262-7171 F 316-262-0149          ENGINEERING   SURVEYING   PLANNING   LANDSCAPE ARCHITECTURE</small>			
PROJECT NUMBER 472-84264	DESIGN TJW	DRAWN TMS	DATE 01/06
REVISIONS:	APPROVED	DATE	SCALE