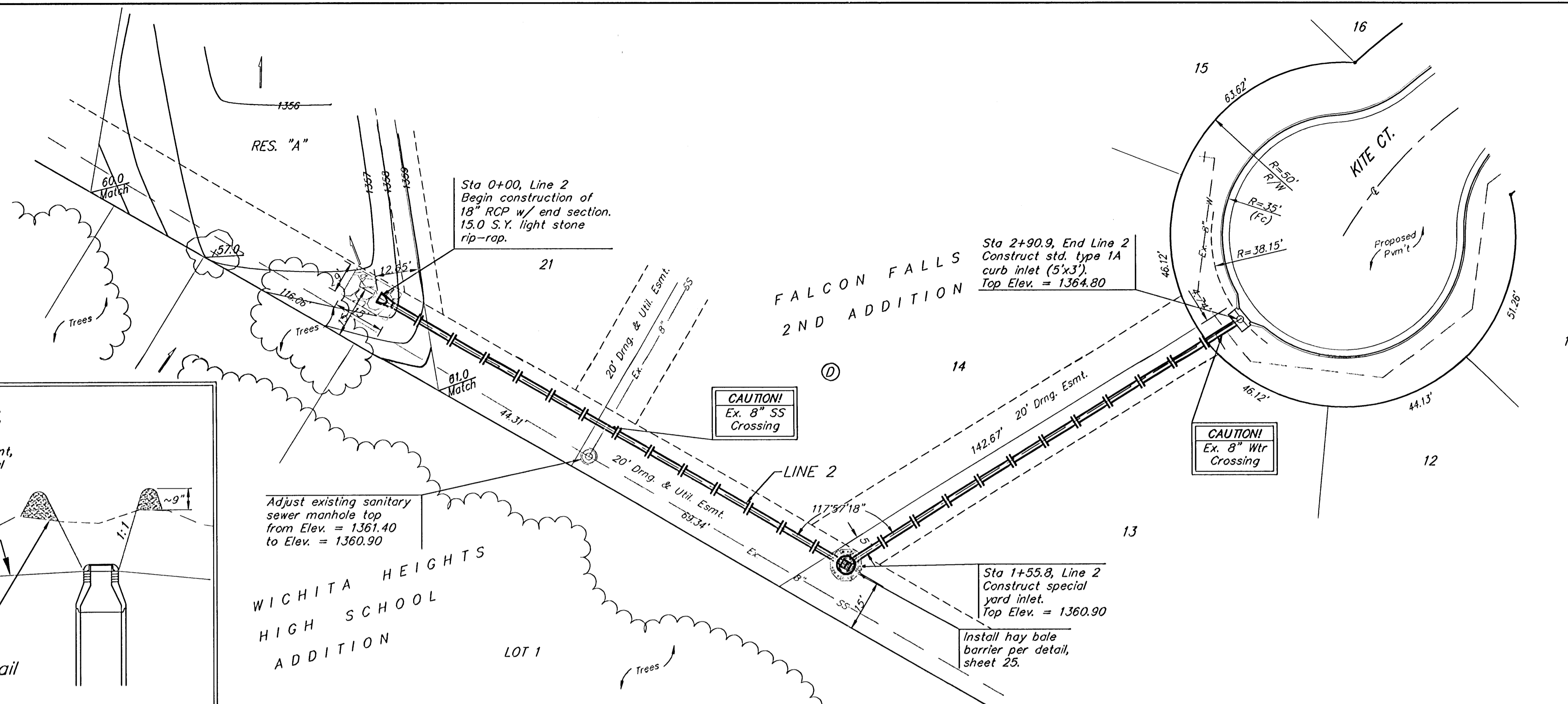
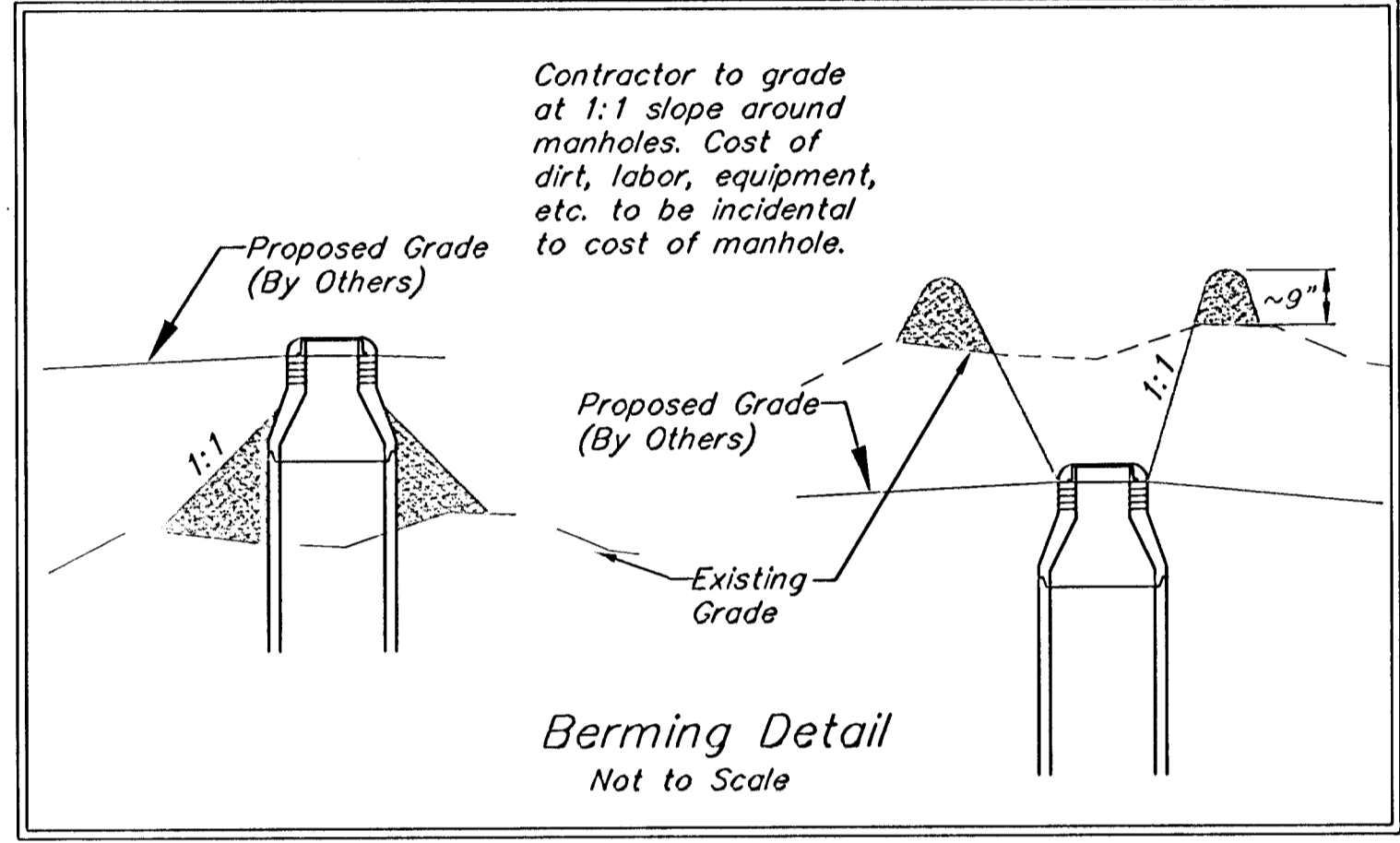


**BENCHMARKS:**  
 BM #1: "□" CL face of catch basin, west side of Lot 4, Block 5, Falcon Falls Addition. Elev. = 1352.47 MSL

BM #2: "□" south end of the south curb return at Kite and Peregrine, Falcon Falls Addition. Elev. = 1359.85 MSL



Scale: 1" = 20' Horizontal  
 1" = 5' Vertical  
 • = Iron



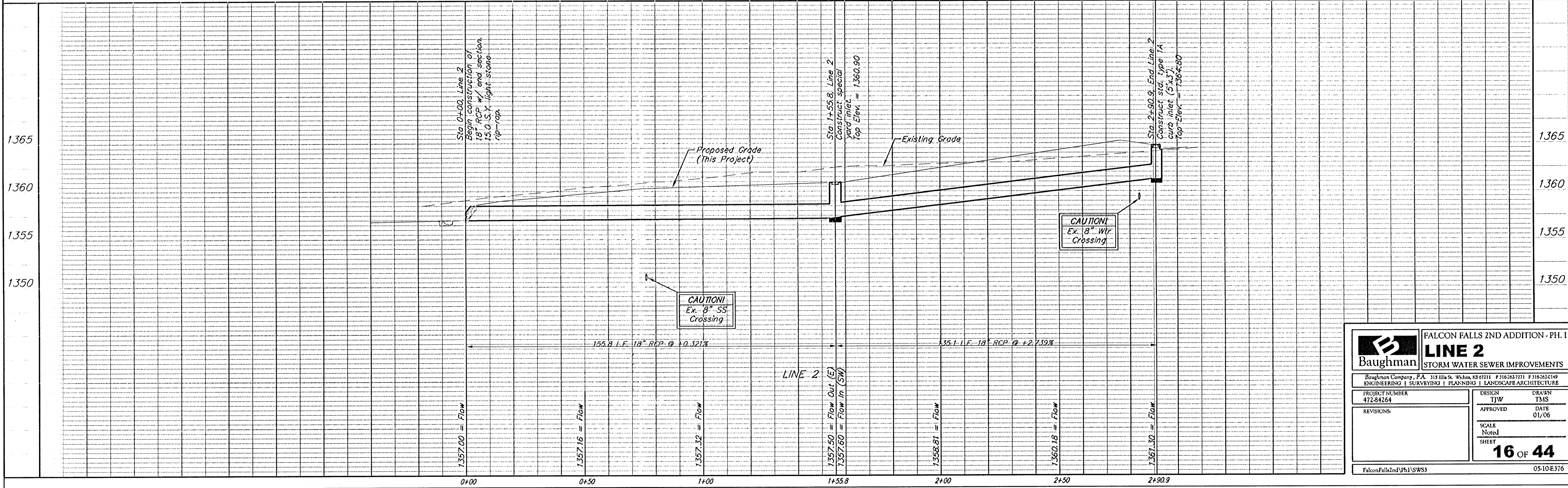
Adjust existing sanitary sewer manhole top from Elev. = 1361.40 to Elev. = 1360.90

**CAUTION!**  
 Ex. 8" SS Crossing

**CAUTION!**  
 Ex. 8" Wtr Crossing

Sta 1+55.8, Line 2  
 Construct special yard inlet.  
 Top Elev. = 1360.90

Install hay bale barrier per detail, sheet 25.



<b>Baughman</b>		FALCON FALLS 2ND ADDITION - PH. I	
		<b>LINE 2</b>	
		STORM WATER SEWER IMPROVEMENTS	
Baughman Company, P.A. 315 Ellis St. Wichita, KS 67111 F 316.262.7171 F 316.262.1149 ENGINEERING   SURVEYING   PLANNING   LANDSCAPE ARCHITECTURE			
PROJECT NUMBER 472-84264	DESIGN TJW	DRAWN TMS	
REVISIONS:	APPROVED	DATE 01/06	
	SCALE Noted	SHEET	
		<b>16</b>	<b>OF 44</b>
FalconFalls2ndVPh1SWS3		05-10-E376	