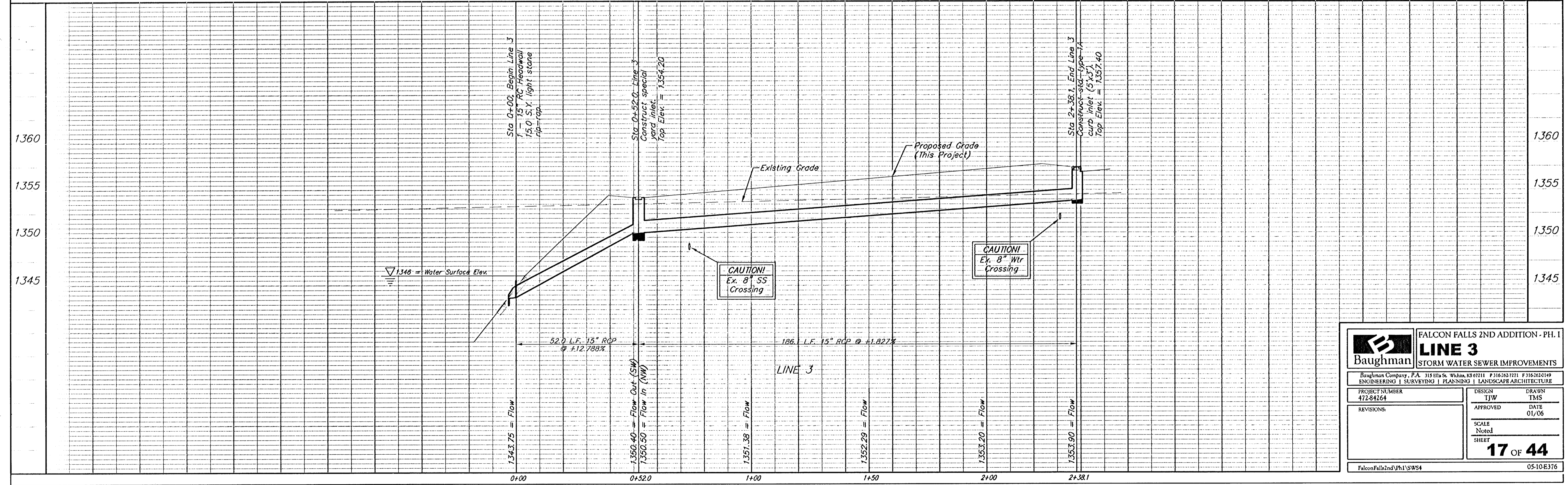
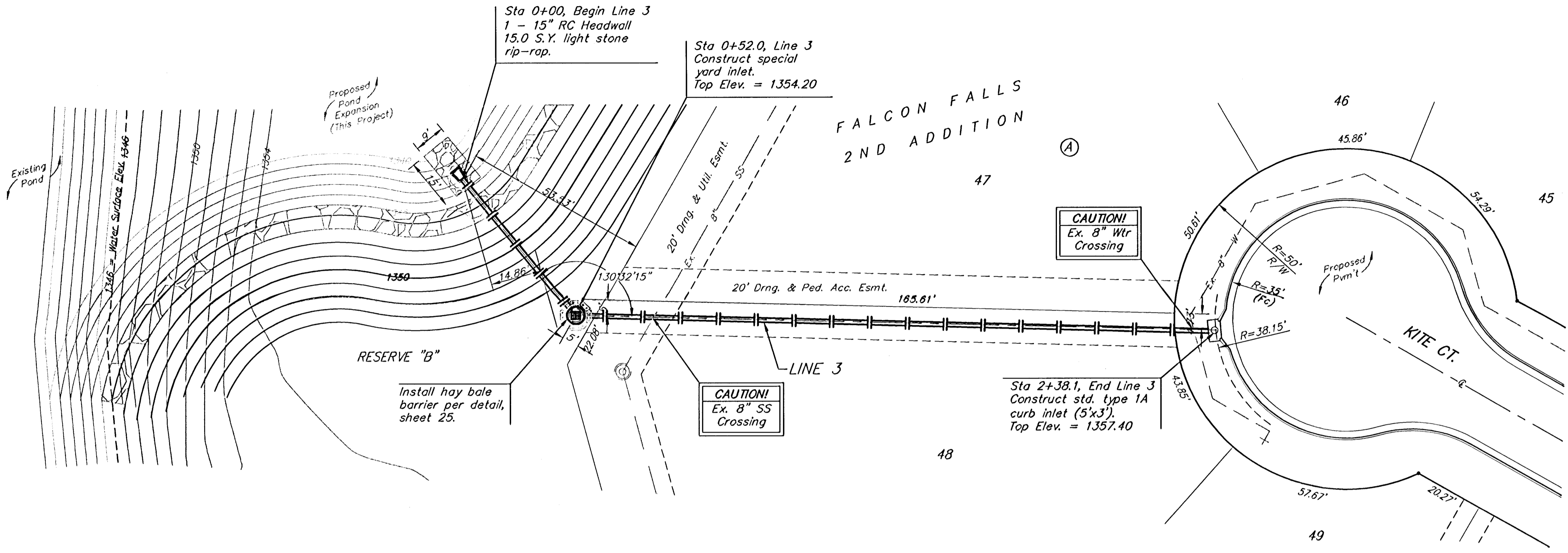


BENCHMARKS:
 BM #1: "□" CL face of catch basin, west side of Lot 4, Block 5, Falcon Falls Addition. Elev. = 1352.47 MSL

BM #2: "□" south end of the south curb return at Kite and Peregrine, Falcon Falls Addition. Elev. = 1359.85 MSL



		FALCON FALLS 2ND ADDITION - PH. I LINE 3 STORM WATER SEWER IMPROVEMENTS	
		<small>Baughman Company, P.A. 315 Ellis St. Wichita, KS 67211 P 316-262-7171 F 316-262-0149 ENGINEERING SURVEYING PLANNING LANDSCAPE ARCHITECTURE</small>	
PROJECT NUMBER 472-84264	DESIGN TIW	DRAWN TMS	APPROVED DATE 01/06
REVISIONS:	SCALE Noted	SHEET 17 OF 44	
<small>FalconFalls2ndVPh1/SWS4</small>		<small>05-10-E376</small>	