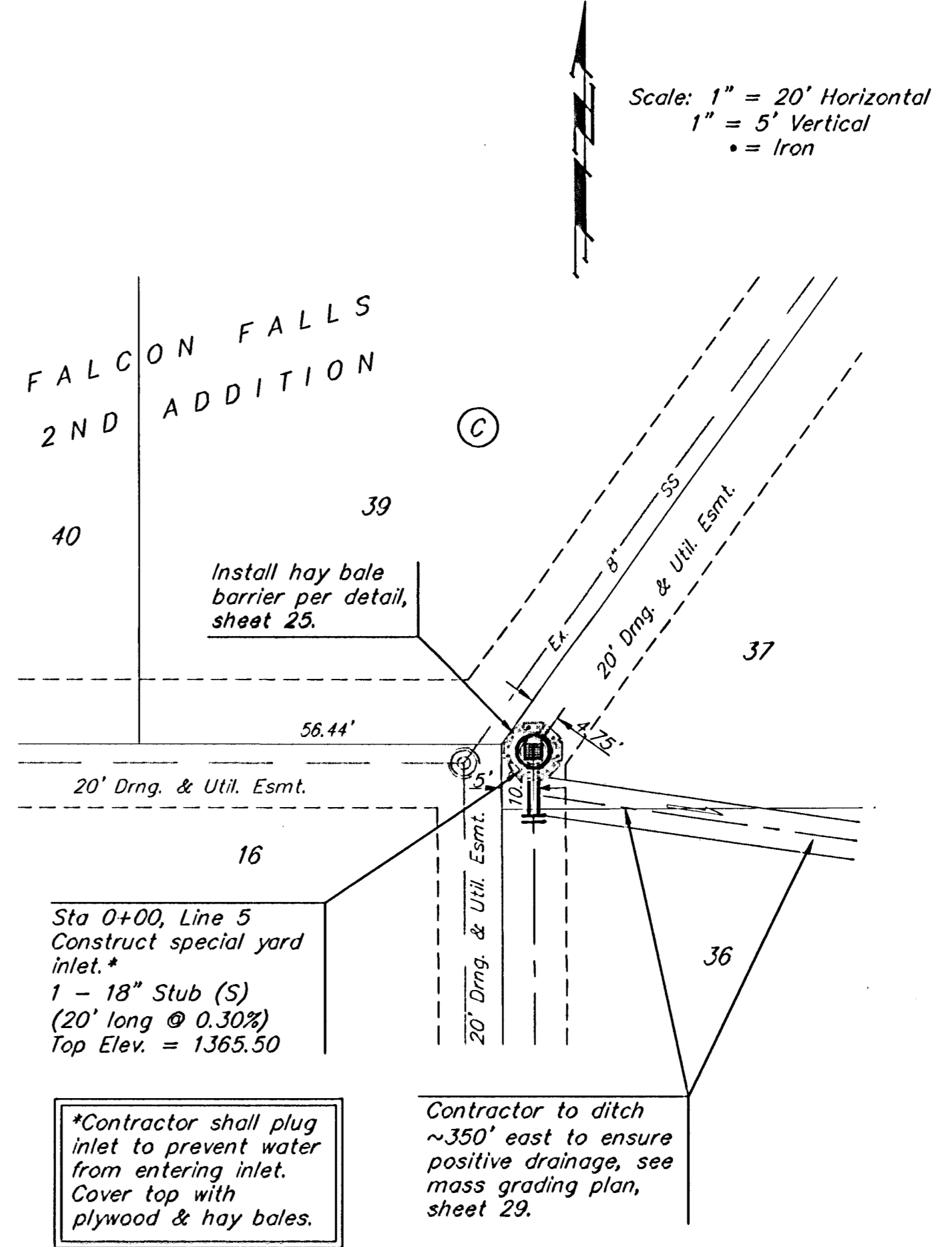
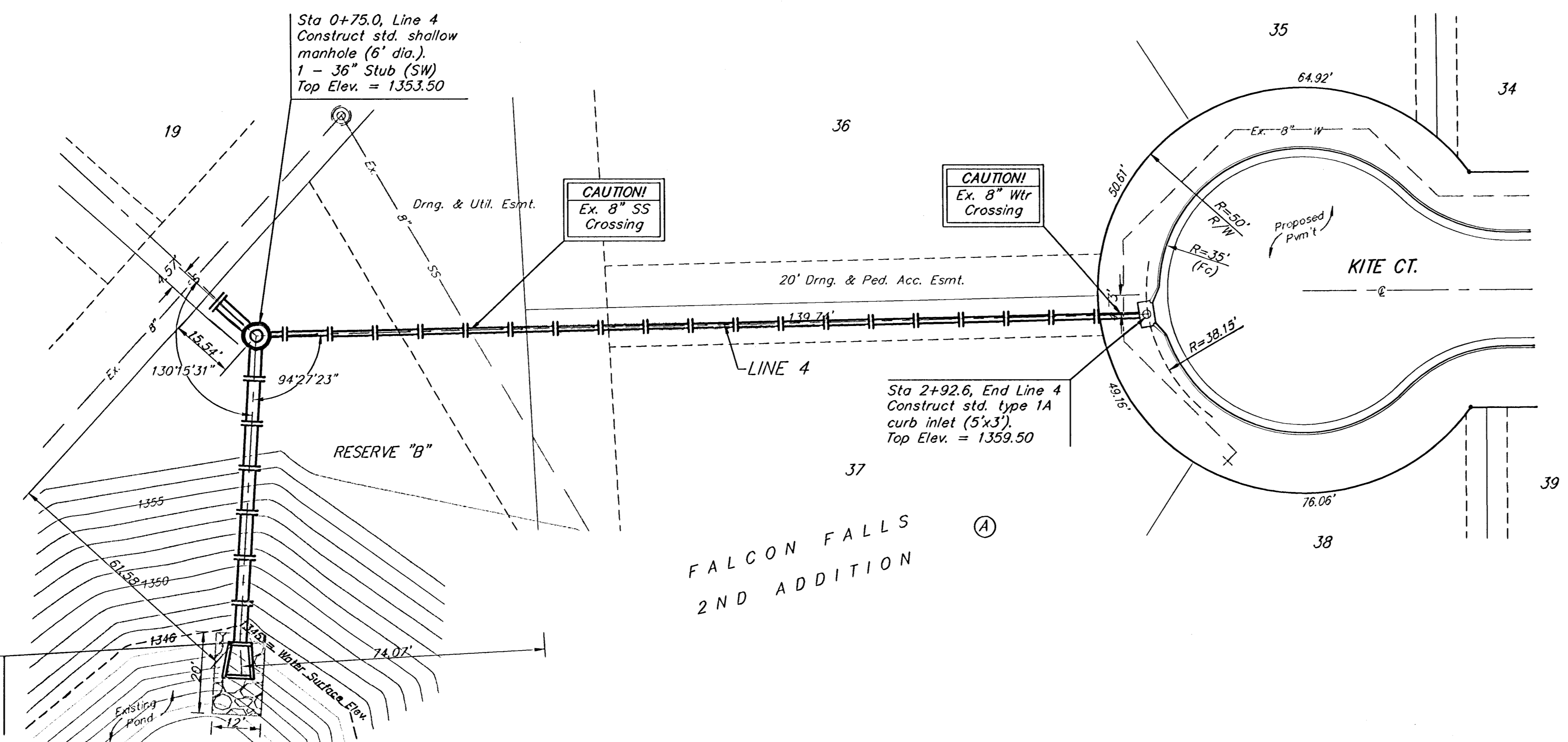


**BENCHMARKS:**

BM #1: "□" CL face of catch basin, west side of Lot 4, Block 5, Falcon Falls Addition. Elev. = 1352.47 MSL

BM #2: "□" south end of the south curb return at Kite and Peregrine, Falcon Falls Addition. Elev. = 1359.85 MSL



Scale: 1" = 20' Horizontal  
1" = 5' Vertical  
• = Iron

Sta 0+00, Begin Line 4  
1 - 36" RC Headwall  
28.7 S.Y. heavy stone rip-rap.

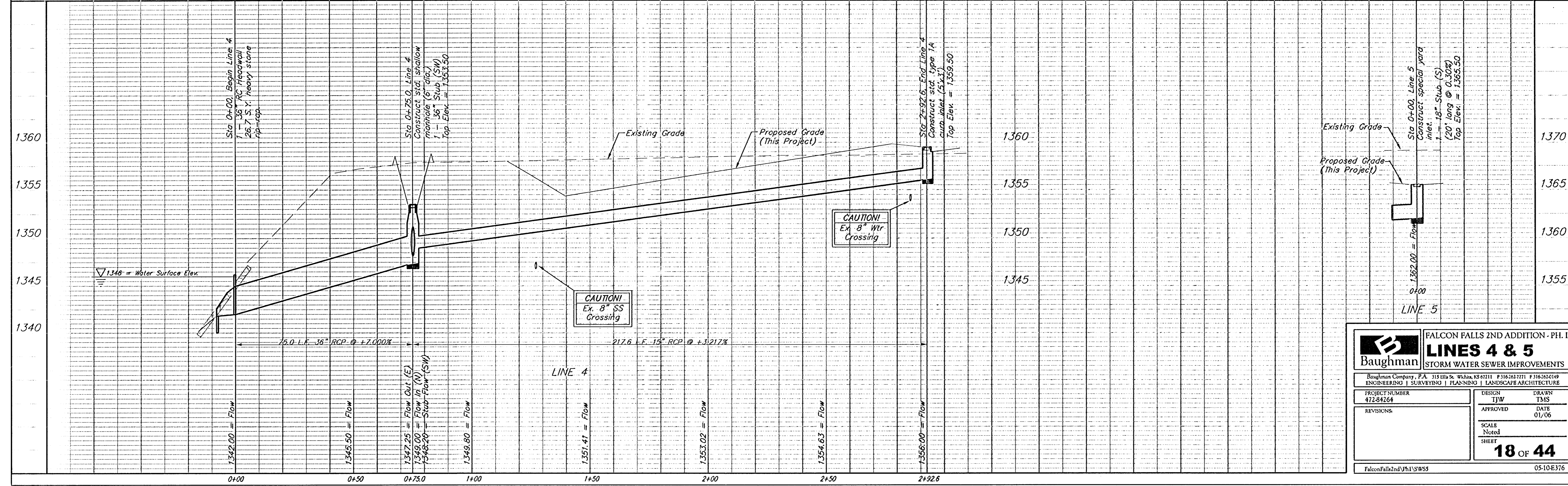
Sta 0+75.0, Line 4  
Construct std. shallow manhole (6' dia.)  
1 - 36" Stub (SW)  
Top Elev. = 1353.50

Sta 2+92.6, End Line 4  
Construct std. type 1A curb inlet (5'x3')  
Top Elev. = 1359.50

Sta 0+00, Line 5  
Construct special yard inlet.\*  
1 - 18" Stub (S)  
(20' long @ 0.30%)  
Top Elev. = 1365.50

\*Contractor shall plug inlet to prevent water from entering inlet. Cover top with plywood & hay bales.

Contractor to ditch ~350' east to ensure positive drainage, see mass grading plan, sheet 29.



		<b>FALCON FALLS 2ND ADDITION - PH. I</b> <b>LINES 4 &amp; 5</b> STORM WATER SEWER IMPROVEMENTS	
		<small>Baughman Company, P.A. 315 Ella St. Wilkes Barre, PA 18262-2711 P 316-262-7171 F 316-262-0149          ENGINEERING   SURVEYING   PLANNING   LANDSCAPE ARCHITECTURE</small>	
PROJECT NUMBER 472-84264	DESIGN TJW	DRAWN TMS	18 OF 44
REVISIONS:	APPROVED DATE 01/06	SCALE Noted SHEET	
<small>FalconFalls2ndVPh1\SW5</small>		<small>05-10-E376</small>	