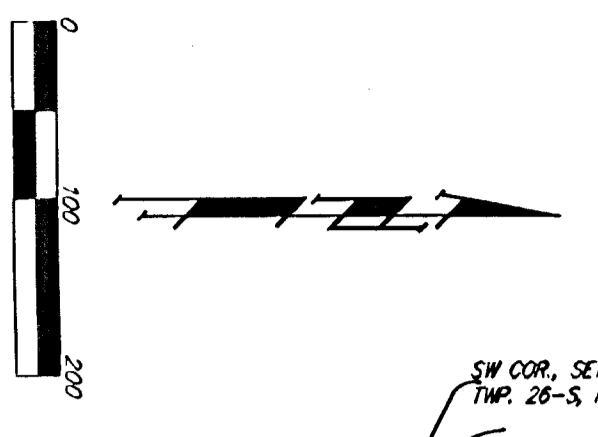
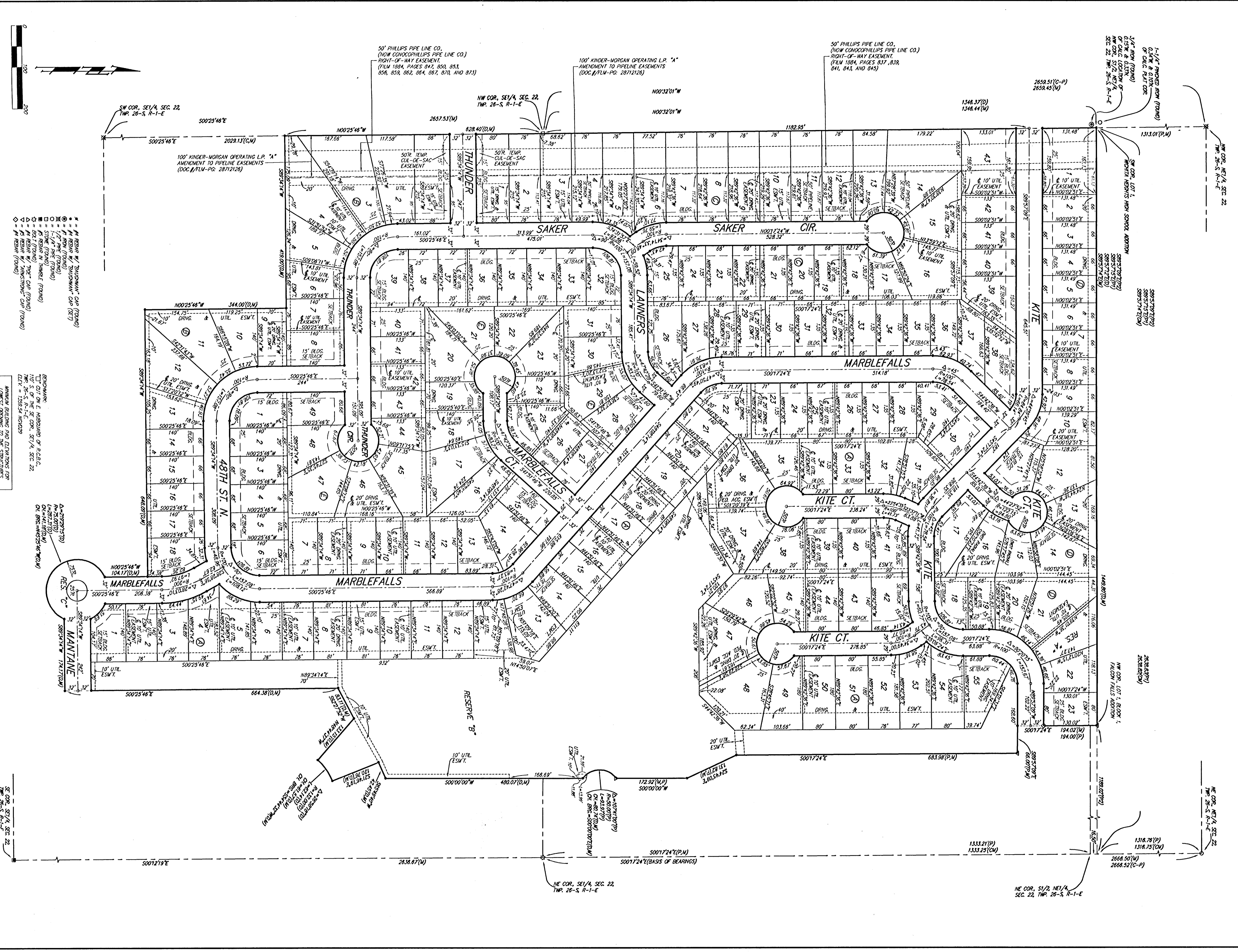


FALCON FALLS 2ND ADDITION WICHITA, SEDGWICK COUNTY, KANSAS



NOTES:
 1. ALL LOTS WITHIN FALCON FALLS 2ND ADDITION SHALL HAVE A 5 FOOT MINIMUM SETBACK.
 2. ALL LOTS WITHIN FALCON FALLS 2ND ADDITION SHALL HAVE A 5 FOOT MINIMUM SETBACK.

- (M) = MANDATORY
- (R) = RATED
- (C) = CALCULATED PER
- (A) = ADJUSTED PER
- (P) = PLATTED PER
- (S) = SETBACK PER
- (W) = WIND PER
- (H) = HIGH PER
- (N) = NOTED PER
- (D) = DRAINAGE PER
- (E) = ELEVATION PER
- (L) = LOT PER
- (B) = BLOCK PER
- (R) = RESERVE PER
- (O) = OTHER PER
- (F) = FUTURE PER
- (G) = GENERAL PER
- (I) = INTEREST PER
- (J) = JUDICIAL PER
- (K) = KANSAS PER
- (L) = LAND PER
- (M) = MORTGAGE PER
- (N) = NATURE PER
- (O) = OIL PER
- (P) = POWER PER
- (Q) = QUANTITY PER
- (R) = RATE PER
- (S) = SIZE PER
- (T) = TIME PER
- (U) = USE PER
- (V) = VALUE PER
- (W) = WEIGHT PER
- (X) = WIDTH PER
- (Y) = YIELD PER
- (Z) = ZONE PER

| LOT | BLOCK | ELEVATION |
|---------|-------|-----------|
| 1-9 | 1 | 1353.0 |
| 10-12 | 1 | 1354.0 |
| 13-15 | 1 | 1355.0 |
| 16-18 | 1 | 1356.0 |
| 19-21 | 1 | 1357.0 |
| 22-24 | 1 | 1358.0 |
| 25-27 | 1 | 1359.0 |
| 28-30 | 1 | 1360.0 |
| 31-33 | 1 | 1361.0 |
| 34-36 | 1 | 1362.0 |
| 37-39 | 1 | 1363.0 |
| 40-42 | 1 | 1364.0 |
| 43-45 | 1 | 1365.0 |
| 46-48 | 1 | 1366.0 |
| 49-51 | 1 | 1367.0 |
| 52-54 | 1 | 1368.0 |
| 55-57 | 1 | 1369.0 |
| 58-60 | 1 | 1370.0 |
| 61-63 | 1 | 1371.0 |
| 64-66 | 1 | 1372.0 |
| 67-69 | 1 | 1373.0 |
| 70-72 | 1 | 1374.0 |
| 73-75 | 1 | 1375.0 |
| 76-78 | 1 | 1376.0 |
| 79-81 | 1 | 1377.0 |
| 82-84 | 1 | 1378.0 |
| 85-87 | 1 | 1379.0 |
| 88-90 | 1 | 1380.0 |
| 91-93 | 1 | 1381.0 |
| 94-96 | 1 | 1382.0 |
| 97-99 | 1 | 1383.0 |
| 100-102 | 1 | 1384.0 |
| 103-105 | 1 | 1385.0 |
| 106-108 | 1 | 1386.0 |
| 109-111 | 1 | 1387.0 |
| 112-114 | 1 | 1388.0 |
| 115-117 | 1 | 1389.0 |
| 118-120 | 1 | 1390.0 |
| 121-123 | 1 | 1391.0 |
| 124-126 | 1 | 1392.0 |
| 127-129 | 1 | 1393.0 |
| 130-132 | 1 | 1394.0 |
| 133-135 | 1 | 1395.0 |
| 136-138 | 1 | 1396.0 |
| 139-141 | 1 | 1397.0 |
| 142-144 | 1 | 1398.0 |
| 145-147 | 1 | 1399.0 |
| 148-150 | 1 | 1400.0 |
| 151-153 | 1 | 1401.0 |
| 154-156 | 1 | 1402.0 |
| 157-159 | 1 | 1403.0 |
| 160-162 | 1 | 1404.0 |
| 163-165 | 1 | 1405.0 |
| 166-168 | 1 | 1406.0 |
| 169-171 | 1 | 1407.0 |
| 172-174 | 1 | 1408.0 |
| 175-177 | 1 | 1409.0 |
| 178-180 | 1 | 1410.0 |
| 181-183 | 1 | 1411.0 |
| 184-186 | 1 | 1412.0 |
| 187-189 | 1 | 1413.0 |
| 190-192 | 1 | 1414.0 |
| 193-195 | 1 | 1415.0 |
| 196-198 | 1 | 1416.0 |
| 199-201 | 1 | 1417.0 |
| 202-204 | 1 | 1418.0 |
| 205-207 | 1 | 1419.0 |
| 208-210 | 1 | 1420.0 |
| 211-213 | 1 | 1421.0 |
| 214-216 | 1 | 1422.0 |
| 217-219 | 1 | 1423.0 |
| 220-222 | 1 | 1424.0 |
| 223-225 | 1 | 1425.0 |
| 226-228 | 1 | 1426.0 |
| 229-231 | 1 | 1427.0 |
| 232-234 | 1 | 1428.0 |
| 235-237 | 1 | 1429.0 |
| 238-240 | 1 | 1430.0 |
| 241-243 | 1 | 1431.0 |
| 244-246 | 1 | 1432.0 |
| 247-249 | 1 | 1433.0 |
| 250-252 | 1 | 1434.0 |
| 253-255 | 1 | 1435.0 |
| 256-258 | 1 | 1436.0 |
| 259-261 | 1 | 1437.0 |
| 262-264 | 1 | 1438.0 |
| 265-267 | 1 | 1439.0 |
| 268-270 | 1 | 1440.0 |
| 271-273 | 1 | 1441.0 |
| 274-276 | 1 | 1442.0 |
| 277-279 | 1 | 1443.0 |
| 280-282 | 1 | 1444.0 |
| 283-285 | 1 | 1445.0 |
| 286-288 | 1 | 1446.0 |
| 289-291 | 1 | 1447.0 |
| 292-294 | 1 | 1448.0 |
| 295-297 | 1 | 1449.0 |
| 298-300 | 1 | 1450.0 |
| 301-303 | 1 | 1451.0 |
| 304-306 | 1 | 1452.0 |
| 307-309 | 1 | 1453.0 |
| 310-312 | 1 | 1454.0 |
| 313-315 | 1 | 1455.0 |
| 316-318 | 1 | 1456.0 |
| 319-321 | 1 | 1457.0 |
| 322-324 | 1 | 1458.0 |
| 325-327 | 1 | 1459.0 |
| 328-330 | 1 | 1460.0 |
| 331-333 | 1 | 1461.0 |
| 334-336 | 1 | 1462.0 |
| 337-339 | 1 | 1463.0 |
| 340-342 | 1 | 1464.0 |
| 343-345 | 1 | 1465.0 |
| 346-348 | 1 | 1466.0 |
| 349-351 | 1 | 1467.0 |
| 352-354 | 1 | 1468.0 |
| 355-357 | 1 | 1469.0 |
| 358-360 | 1 | 1470.0 |
| 361-363 | 1 | 1471.0 |
| 364-366 | 1 | 1472.0 |
| 367-369 | 1 | 1473.0 |
| 370-372 | 1 | 1474.0 |
| 373-375 | 1 | 1475.0 |
| 376-378 | 1 | 1476.0 |
| 379-381 | 1 | 1477.0 |
| 382-384 | 1 | 1478.0 |
| 385-387 | 1 | 1479.0 |
| 388-390 | 1 | 1480.0 |
| 391-393 | 1 | 1481.0 |
| 394-396 | 1 | 1482.0 |
| 397-399 | 1 | 1483.0 |
| 400-402 | 1 | 1484.0 |
| 403-405 | 1 | 1485.0 |
| 406-408 | 1 | 1486.0 |
| 409-411 | 1 | 1487.0 |
| 412-414 | 1 | 1488.0 |
| 415-417 | 1 | 1489.0 |
| 418-420 | 1 | 1490.0 |
| 421-423 | 1 | 1491.0 |
| 424-426 | 1 | 1492.0 |
| 427-429 | 1 | 1493.0 |
| 430-432 | 1 | 1494.0 |
| 433-435 | 1 | 1495.0 |
| 436-438 | 1 | 1496.0 |
| 439-441 | 1 | 1497.0 |
| 442-444 | 1 | 1498.0 |
| 445-447 | 1 | 1499.0 |
| 448-450 | 1 | 1500.0 |
| 451-453 | 1 | 1501.0 |
| 454-456 | 1 | 1502.0 |
| 457-459 | 1 | 1503.0 |
| 460-462 | 1 | 1504.0 |
| 463-465 | 1 | 1505.0 |
| 466-468 | 1 | 1506.0 |
| 469-471 | 1 | 1507.0 |
| 472-474 | 1 | 1508.0 |
| 475-477 | 1 | 1509.0 |
| 478-480 | 1 | 1510.0 |
| 481-483 | 1 | 1511.0 |
| 484-486 | 1 | 1512.0 |
| 487-489 | 1 | 1513.0 |
| 490-492 | 1 | 1514.0 |
| 493-495 | 1 | 1515.0 |
| 496-498 | 1 | 1516.0 |
| 499-501 | 1 | 1517.0 |
| 502-504 | 1 | 1518.0 |
| 505-507 | 1 | 1519.0 |
| 508-510 | 1 | 1520.0 |
| 511-513 | 1 | 1521.0 |
| 514-516 | 1 | 1522.0 |
| 517-519 | 1 | 1523.0 |
| 520-522 | 1 | 1524.0 |
| 523-525 | 1 | 1525.0 |
| 526-528 | 1 | 1526.0 |
| 529-531 | 1 | 1527.0 |
| 532-534 | 1 | 1528.0 |
| 535-537 | 1 | 1529.0 |
| 538-540 | 1 | 1530.0 |
| 541-543 | 1 | 1531.0 |
| 544-546 | 1 | 1532.0 |
| 547-549 | 1 | 1533.0 |
| 550-552 | 1 | 1534.0 |
| 553-555 | 1 | 1535.0 |
| 556-558 | 1 | 1536.0 |
| 559-561 | 1 | 1537.0 |
| 562-564 | 1 | 1538.0 |
| 565-567 | 1 | 1539.0 |
| 568-570 | 1 | 1540.0 |
| 571-573 | 1 | 1541.0 |
| 574-576 | 1 | 1542.0 |
| 577-579 | 1 | 1543.0 |
| 580-582 | 1 | 1544.0 |
| 583-585 | 1 | 1545.0 |
| 586-588 | 1 | 1546.0 |
| 589-591 | 1 | 1547.0 |
| 592-594 | 1 | 1548.0 |
| 595-597 | 1 | 1549.0 |
| 598-600 | 1 | 1550.0 |
| 601-603 | 1 | 1551.0 |
| 604-606 | 1 | 1552.0 |
| 607-609 | 1 | 1553.0 |
| 610-612 | 1 | 1554.0 |
| 613-615 | 1 | 1555.0 |
| 616-618 | 1 | 1556.0 |
| 619-621 | 1 | 1557.0 |
| 622-624 | 1 | 1558.0 |
| 625-627 | 1 | 1559.0 |
| 628-630 | 1 | 1560.0 |
| 631-633 | 1 | 1561.0 |
| 634-636 | 1 | 1562.0 |
| 637-639 | 1 | 1563.0 |
| 640-642 | 1 | 1564.0 |
| 643-645 | 1 | 1565.0 |
| 646-648 | 1 | 1566.0 |
| 649-651 | 1 | 1567.0 |
| 652-654 | 1 | 1568.0 |
| 655-657 | 1 | 1569.0 |
| 658-660 | 1 | 1570.0 |
| 661-663 | 1 | 1571.0 |
| 664-666 | 1 | 1572.0 |
| 667-669 | 1 | 1573.0 |
| 670-672 | 1 | 1574.0 |
| 673-675 | 1 | 1575.0 |
| 676-678 | 1 | 1576.0 |
| 679-681 | 1 | 1577.0 |
| 682-684 | 1 | 1578.0 |
| 685-687 | 1 | 1579.0 |
| 688-690 | 1 | 1580.0 |
| 691-693 | 1 | 1581.0 |
| 694-696 | 1 | 1582.0 |
| 697-699 | 1 | 1583.0 |
| 700-702 | 1 | 1584.0 |
| 703-705 | 1 | 1585.0 |
| 706-708 | 1 | 1586.0 |
| 709-711 | 1 | 1587.0 |
| 712-714 | 1 | 1588.0 |
| 715-717 | 1 | 1589.0 |
| 718-720 | 1 | 1590.0 |
| 721-723 | 1 | 1591.0 |
| 724-726 | 1 | 1592.0 |
| 727-729 | 1 | 1593.0 |
| 730-732 | 1 | 1594.0 |
| 733-735 | 1 | 1595.0 |
| 736-738 | 1 | 1596.0 |
| 739-741 | 1 | 1597.0 |
| 742-744 | 1 | 1598.0 |
| 745-747 | 1 | 1599.0 |
| 748-750 | 1 | 1600.0 |
| 751-753 | 1 | 1601.0 |
| 754-756 | 1 | 1602.0 |
| 757-759 | 1 | 1603.0 |
| 760-762 | 1 | 1604.0 |
| 763-765 | 1 | 1605.0 |
| 766-768 | 1 | 1606.0 |
| 769-771 | 1 | 1607.0 |
| 772-774 | 1 | 1608.0 |
| 775-777 | 1 | 1609.0 |
| 778-780 | 1 | 1610.0 |
| 781-783 | 1 | 1611.0 |
| 784-786 | 1 | 1612.0 |
| 787-789 | 1 | 1613.0 |
| 790-792 | 1 | 1614.0 |
| 793-795 | 1 | 1615.0 |
| 796-798 | 1 | 1616.0 |
| 799-801 | 1 | 1617.0 |
| 802-804 | 1 | 1618.0 |
| 805-807 | 1 | 1619.0 |
| 808-810 | 1 | 1620.0 |
| 811-813 | 1 | 1621.0 |
| 814-816 | 1 | 1622.0 |
| 817-819 | 1 | 1623.0 |
| 820-822 | 1 | 1624.0 |
| 823-825 | 1 | 1625.0 |
| 826-828 | 1 | 1626.0 |
| 829-831 | 1 | 1627.0 |
| 832-834 | 1 | 1628.0 |
| 835-837 | 1 | 1629.0 |
| 838-840 | 1 | 1630.0 |
| 841-843 | 1 | 1631.0 |
| 844-846 | 1 | 1632.0 |
| 847-849 | 1 | 1633.0 |
| 850-852 | 1 | 1634.0 |
| 853-855 | 1 | 1635.0 |
| 856-858 | 1 | 1636.0 |
| 859-861 | 1 | 1637.0 |
| 862-864 | 1 | 1638.0 |
| 865-867 | 1 | 1639.0 |
| 868-870 | 1 | 1640.0 |
| 871-873 | 1 | 1641.0 |
| 874-876 | 1 | 1642.0 |
| 877-879 | 1 | 1643.0 |
| 880-882 | 1 | 1644.0 |
| 883-885 | 1 | 1645.0 |
| 886-888 | 1 | 1646.0 |
| 889-891 | 1 | 1647.0 |
| 892-894 | 1 | 1648.0 |
| 895-897 | 1 | 1649.0 |