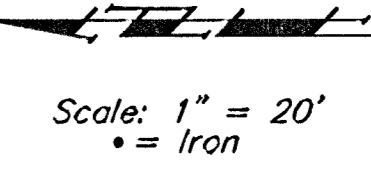


BENCHMARKS:

"□" Cut top of curb on the southeast top of curb return, 46.66' East and 19.46' South of the intersection of Thurman & Evergreen
Elev. = 166.10 (city datum)

"□" Cut top of curb on the south side curb line of the north Suncrest Ave. a distance of 97.86' East & 2.17' South of Lot 1, Blk. A, English Country Gardens Addition.
Elev. = 158.61 (city datum)



P.V.I.
Elev. = 165.20
No V.C.

P.V.I.
Elev. = 165.80
60' V.C.

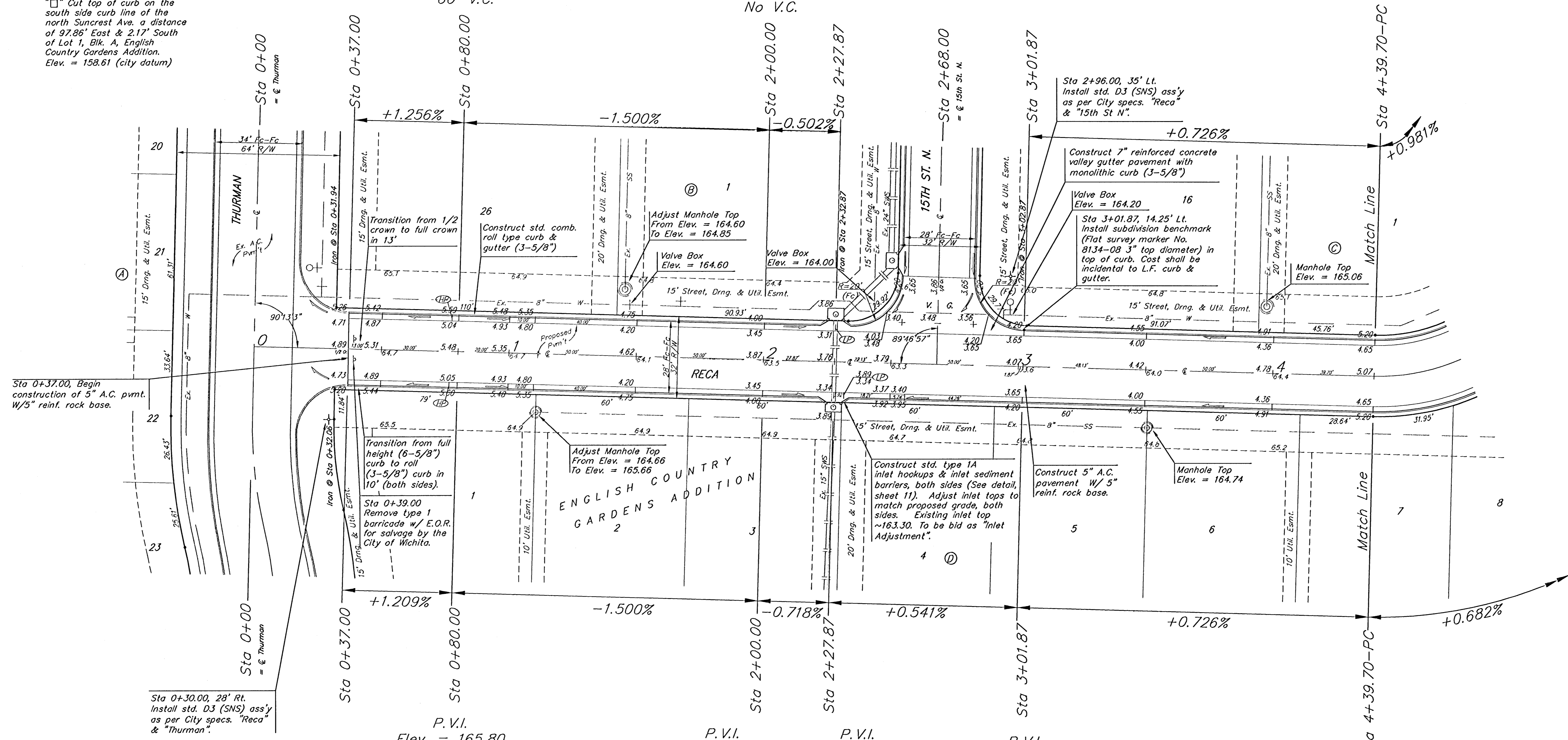
P.V.I.
Elev. = 164.00
No V.C.

P.V.I.
Elev. = 164.00
No V.C.

P.V.I.
Elev. = 163.80
55.74' V.C.

P.V.I.
Elev. = 164.20
No V.C.

P.V.I.
Elev. = 165.20
No V.C.



NOTE: ROLL TYPE CURB & GUTTER TO BE CONSTRUCTED ON THE PAVEMENT SHOWN ON THIS SHEET. TOP OF CURB ELEVATIONS ARE GIVEN FOR FULL HEIGHT CURB.

| | | | |
|---|-----------|---------------------------------------|-------|
| | | ENGLISH COUNTRY GARDENS ADD. - PH. II | |
| | | STA 0+00 TO STA 4+39.70 | |
| Baughman Company, P.A. 315 Bls. St. W. Jct. K-97111 F 316-262-0149 ENGINEERING SURVEYING PLANNING LANDSCAPE ARCHITECTURE | | DESIGN | DRAWN |
| PROJECT NUMBER | 472-83936 | AEG | TMS |
| REVISIONS: | | APPROVED | DATE |
| | | Noted | 07/05 |
| | | SCALE | |
| | | Sheet | |
| | | 5 OF 17 | |
| EnglishCountryGardens\PhaseII\Str | | 05-06-E273 | |