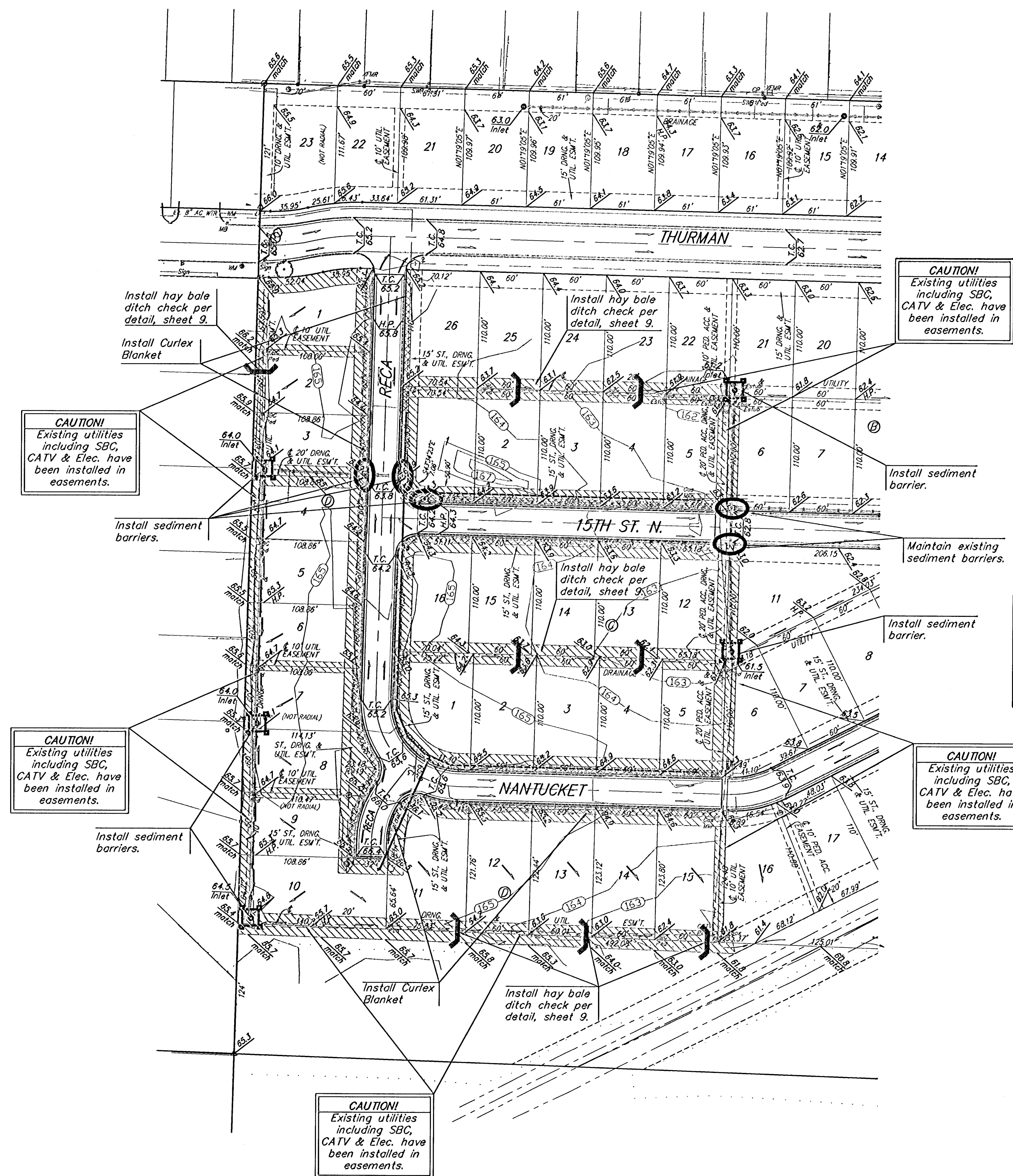


Scale: 1" = 60'



CAUTION!
Existing utilities including SBC, CATV & Elec. have been installed in easements.

Maintain one construction entrance onto existing paved roadway per detail, sheet 11.

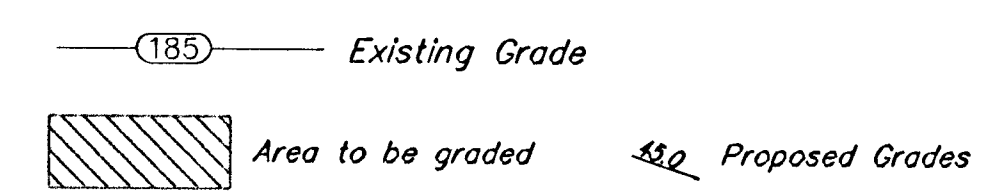
CAUTION!
Existing utilities including SBC, CATV & Elec. have been installed in easements.

Maintain existing sediment barriers.

All easements have been graded prior to construction with the mass grading plan, however, all easements shall be fine graded with this project after street construction has been completed. All cost associated with the fine grading shall be included in the lump sum bid item "Easement Grading".

CAUTION!
Existing utilities including SBC, CATV & Elec. have been installed in easements.

CAUTION!
Existing utilities including SBC, CATV & Elec. have been installed in easements.

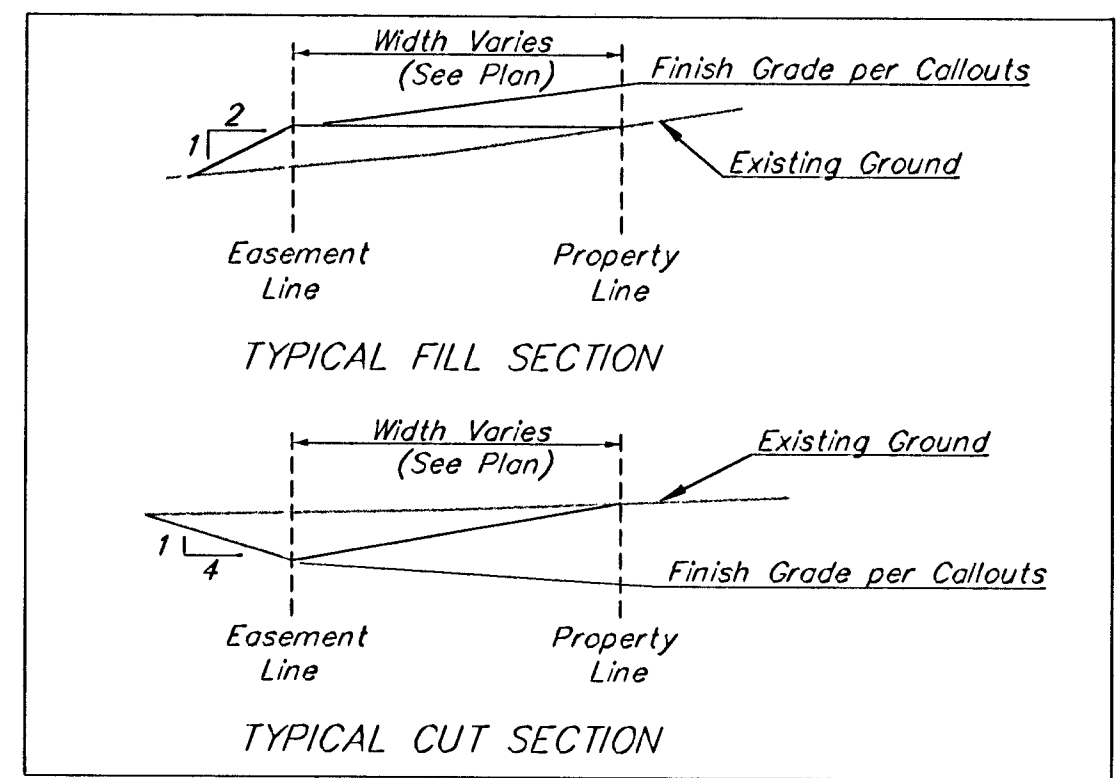
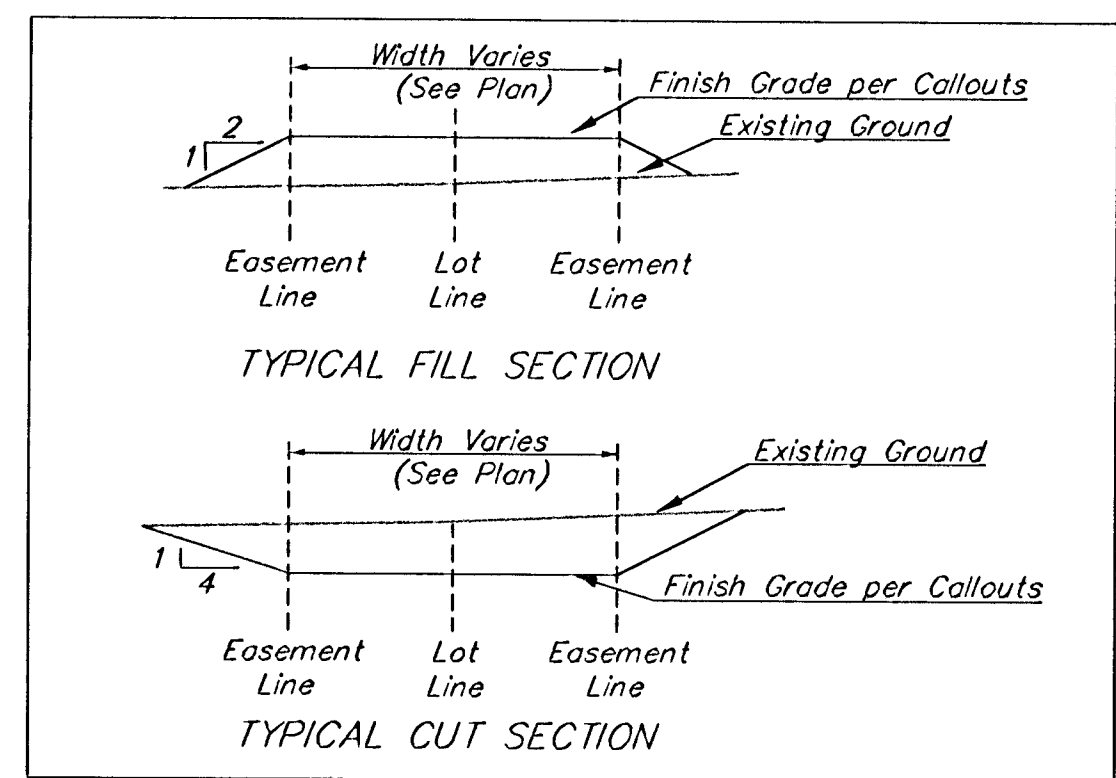


Approximate Easement Grading Quantities:
(For Information Only)
Excavation: 232 C.Y.
Fill: 96 C.Y.

NOTE: Esmt grading quantities do not reflect easements adjacent to street R/W. See earthwork cross sections.

The contractor shall fill and grade the easements as shown to the elevations given on the easement grading plan. All costs for grading shall be incidental to the Easement Grading Bid Item.

The contractor shall 'straight' grade the easements between the elevations given. Where a callout designates 'Match', the contractor will grade to the existing ground elevation. The existing ditch cross sections are shown below.



- HAY BALE DITCH CHECK
- DROP INLET PROTECTION
- CURB INLET PROTECTION
- CURLEX BLANKET

	ENGLISH COUNTRY GARDENS ADD. - PH. II ESMT, GRADING & EROSION CONTROL PLAN	
	<small>Baughman Company, P.A. 315 Ellis St. Wichita, KS 67211 P 316-262-7271 F 316-262-0149 ENGINEERING SURVEYING PLANNING LANDSCAPE ARCHITECTURE</small>	
PROJECT NUMBER 472-33936	DESIGN TMS	DRAWN TMS
REVISIONS:	APPROVED DATE 07/05	SCALE Noted
		SHEET 13 OF 17
<small>EnglishCountryGardens\PhaseII\StrECPlan</small>		<small>0506 E273</small>