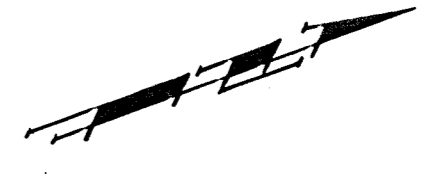


BENCHMARK:
 BM #1: "□" Cut in middle of N headwall of RCB on 21st St. North. 1004.3' W & 22.1' N of SE Cor., SE1/4, Sec. 2, T-27-S, R-2-E.
 Elev. = 173.23 City Datum

BM #2: "□" Cut at the SE corner of the intersection of Castle Rock & Castle Rock Ct., Krug North Addition.
 Elev. = 183.50 City Datum

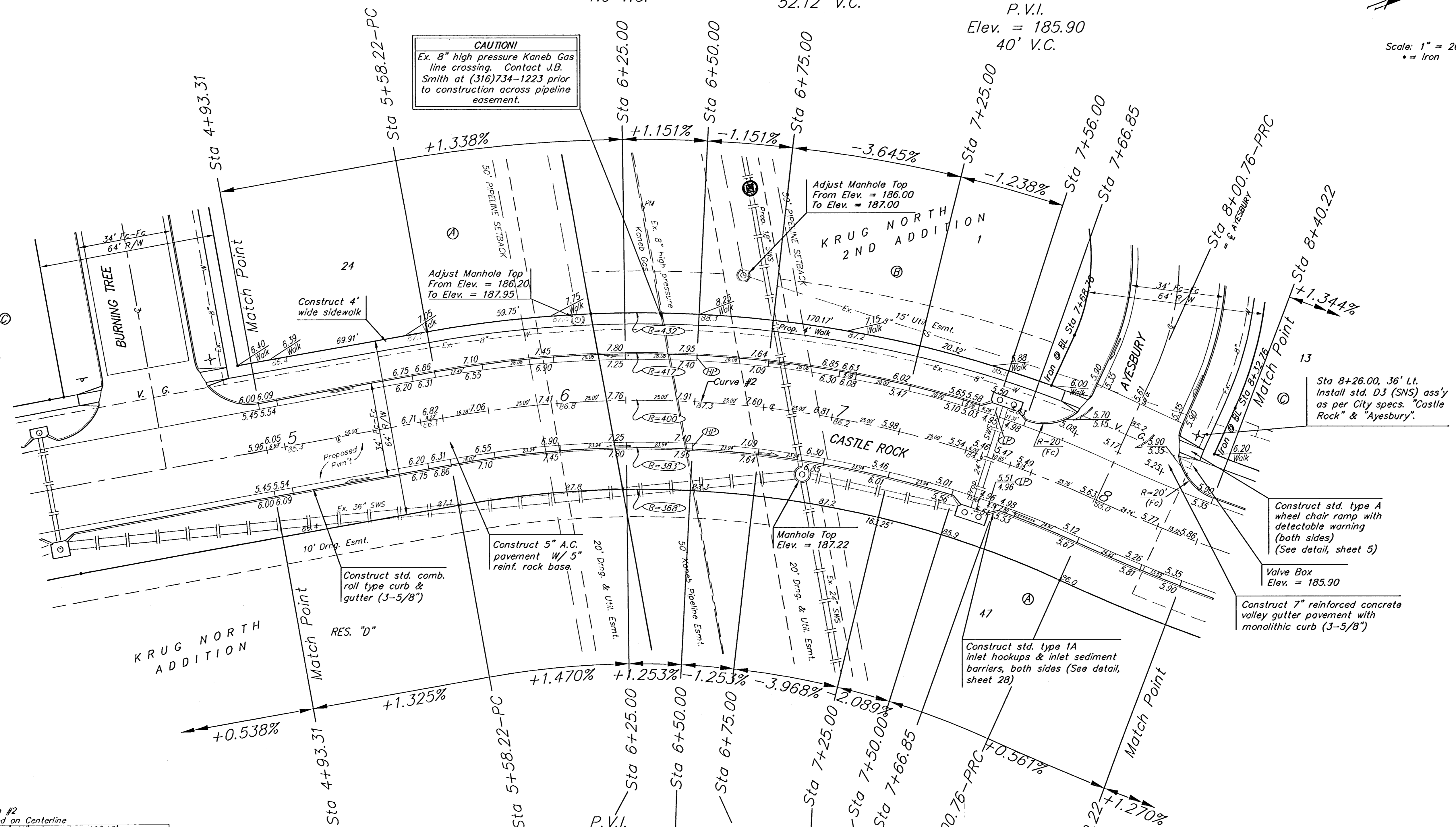
P.V.I. Elev. = 188.10
 P.V.I. 52.12' V.C. Elev. = 187.80
 No V.C. P.V.I. Elev. = 187.80
 52.12' V.C.

P.V.I. Elev. = 185.90
 40' V.C.



Scale: 1" = 20'
 * = Iron

CAUTION!
 Ex. 8" high pressure Kanab Gas line crossing. Contact J.B. Smith at (316)734-1223 prior to construction across pipeline easement.



Curve #2
 Curve Data Based on Centerline
 Rad. = 400' Delta = 34° 44' 31" Tangent = 125.13'
 Arc = 242.54' L.C. = 238.85' Def/Ft. = 4.29/26 Min.

Station	Arc	FACE CHORD LENGTHS		Def.	T. Def.
		8' Lt.	8' Rt.		
5+58.22	-	-	-	0'00.00"	0'00.00"
5+75.00	16.78'	17.83'	15.73'	1'12.06"	1'12.06"
6+00.00	25.00'	26.56'	23.43'	1'47.26"	2'59.32"
6+25.00	25.00'	26.56'	23.43'	1'47.26"	4'46.58"
6+50.00	25.00'	26.56'	23.43'	1'47.26"	6'34.24"
6+75.00	25.00'	26.56'	23.43'	1'47.26"	8'21.50"
7+00.00	25.00'	26.56'	23.43'	1'47.26"	10'09.16"
7+25.00	25.00'	26.56'	23.43'	1'47.26"	11'56.42"
7+50.00	25.00'	26.56'	23.43'	1'47.26"	13'44.08"
7+66.85	16.85'	17.90'	15.80'	1'12.24"	14'56.32"
8+00.76	33.91'	36.02'	31.78'	2'25.43"	17'22.15"

P.V.I. Elev. = 186.60
 No V.C.

P.V.I. Elev. = 186.86
 No V.C.

P.V.I. Elev. = 187.80
 No V.C.

P.V.I. Elev. = 187.80
 47.88' V.C.

P.V.I. Elev. = 188.10
 47.88' V.C.

P.V.I. Elev. = 185.90
 47.88' V.C.

P.V.I. Elev. = 185.40
 47.88' V.C.

P.V.I. Elev. = 185.90
 No V.C.

NOTE: ROLL TYPE CURB & GUTTER TO BE CONSTRUCTED ON THE PAVEMENT SHOWN ON THIS SHEET. TOP OF CURB ELEVATIONS ARE GIVEN FOR FULL HEIGHT CURB.

Baughman ENGINEERING | SURVEYING | PLANNING | LANDSCAPE ARCHITECTURE
 315 Elm St. W. Lebanon, KS 67111 P:316.343.0149 F:316.343.0149

PROJECT NUMBER: 472-83974
 DESIGN: TMS
 DRAWN: TMS
 APPROVED: DATE: 09/05
 SCALE: Noted
 SHEET: 7 OF 44

KrugNorth2nd\Fhael\Str2 05/04/E231