

BENCHMARK:
 BM #1: "□" Cut in middle of
 N headwall of RCBC on 21st
 St. North. 1004.3' W & 22.1'
 N of SE Cor., SE1/4, Sec. 2,
 T-27-S, R-2-E.
 Elev. = 173.23 City Datum

BM #2: "□" Cut at the SE
 corner of the intersection of
 Castle Rock & Castle Rock Ct.,
 Krug North Addition.
 Elev. = 183.50 City Datum

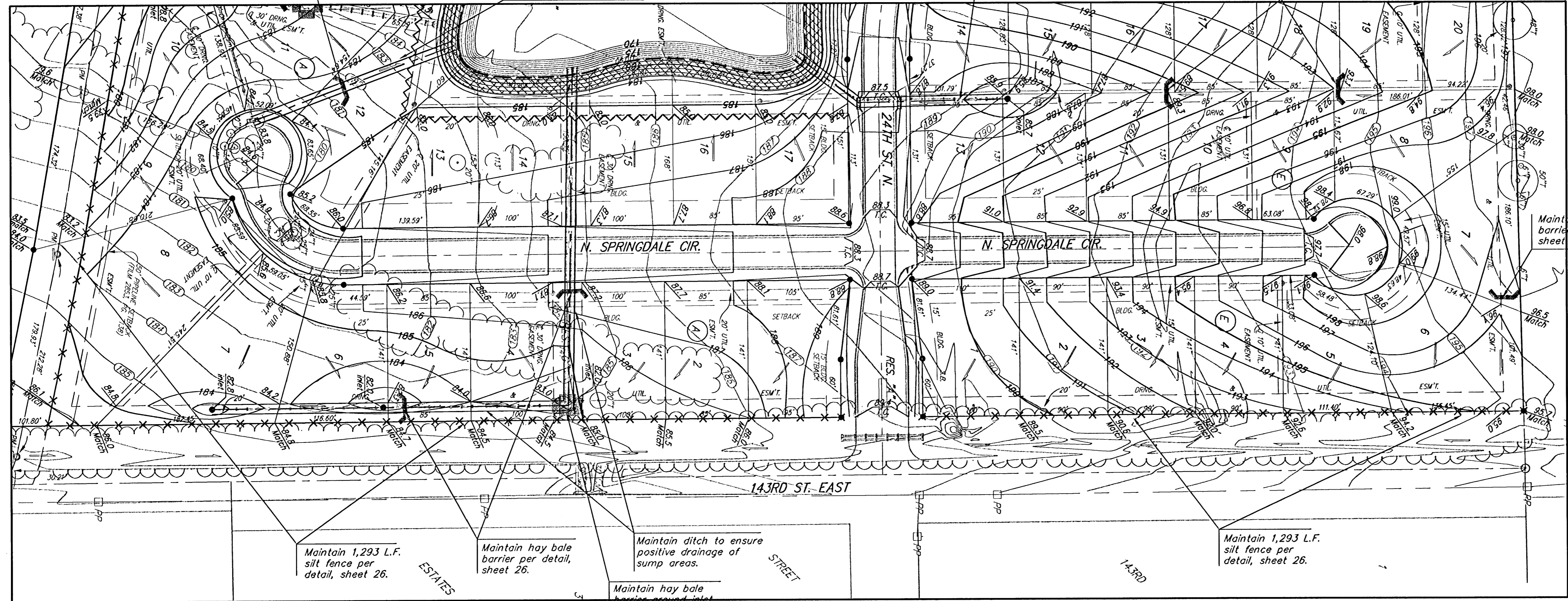
Scale: 1" = 60'

Maintain hay bale barrier per detail, sheet 26.

Maintain ditch to ensure positive drainage of sump areas.

Maintain ditch to ensure positive drainage of sump areas.

Maintain hay bale barrier per detail, sheet 26.



Maintain hay bale barrier per detail, sheet 26.

Maintain 1,293 L.F. silt fence per detail, sheet 26.

Maintain hay bale barrier per detail, sheet 26.

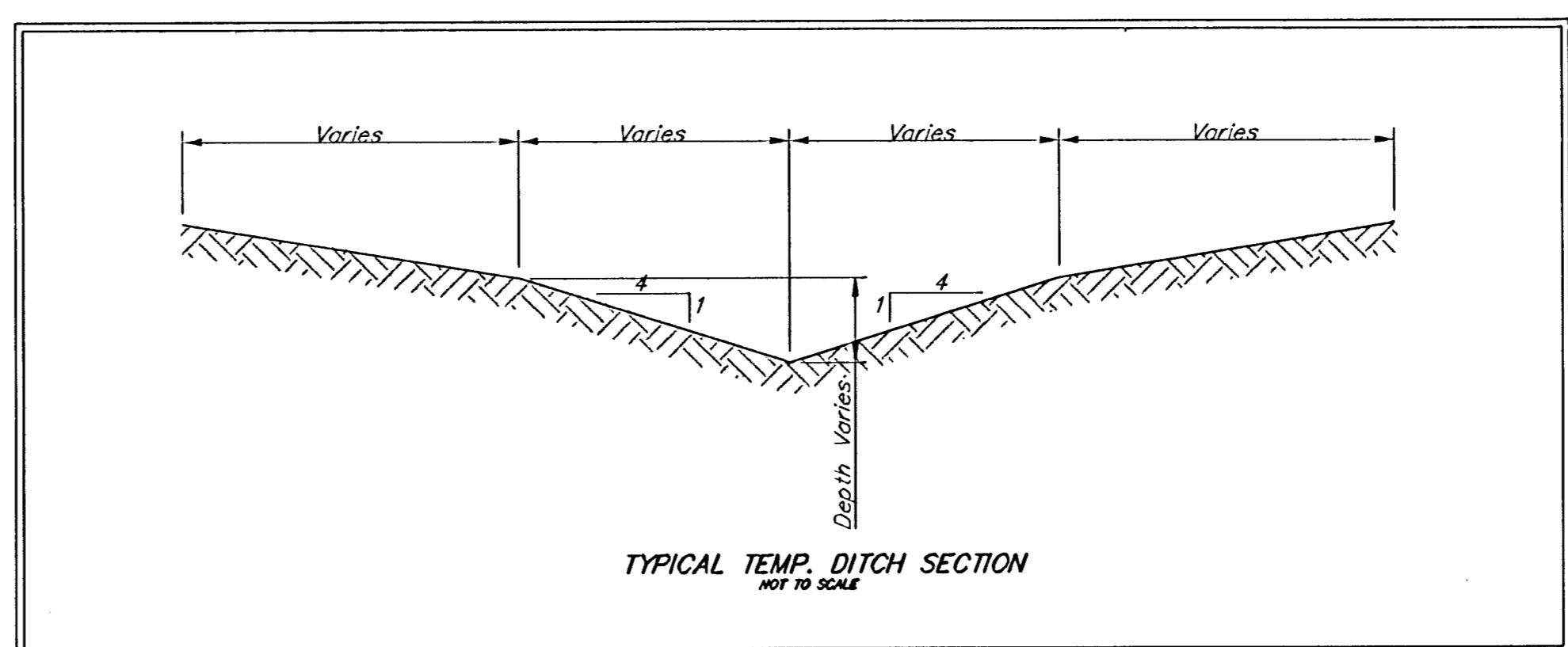
Maintain ditch to ensure positive drainage of sump areas.

Maintain hay bale barrier around inlet per detail, sheet 26.

Maintain 1,293 L.F. silt fence per detail, sheet 26.

Maintain one existing construction entrance onto existing paved roadway per detail, sheet 14.

- (185)— Existing Grade
- 185— Proposed Grade
- ××××× Silt Fence
- ▨ CURLEX BLANKET
- CURB INLET PROTECTION



	KRUG NORTH 2ND/KRUG NORTH ADD. - PH. II ESMT. GRADING PLAN & EROSION CONTROL PLAN WICHITA, KANSAS	
	Baughman Company, P.A. 315 Ellis St. Wichita, KS 67211 P:316.263.7711 F:316.263.0149 ENGINEERING SURVEYING PLANNING LANDSCAPE ARCHITECTURE	
PROJECT NUMBER 472-83974	DESIGN TMS	DRAWN TMS
REVISIONS:	APPROVED DATE 09/05	SCALE Noted
		SHEET 32 OF 44
KrugNorth2nd\Phase1\StrECplan3		0504E231