

# GENERAL NOTES:

- The Contractor shall comply with all applicable safety regulations. All construction shall be completed following current City Standard Specifications and Special Provisions.
- Contractor will be required to provide notice to utility companies a minimum of seventy-two (72) hours prior to any excavation, as follows:  
 Kansas One-Call 687-2470  
 The Contractor must notify the following in case of an emergency:  
 AT&T 1-800-246-6464  
 Black Hills Energy 1-800-694-8989  
 City of Wichita Water & Sewer 1-316-219-8921  
 City of Wichita Stormwater 1-316-268-4090  
 City of Wichita Traffic 1-316-268-4034  
 Cox Communications 1-888-249-3530  
 Kansas Gas Service 1-888-482-4950  
 Eergy 1-800-544-4857
- Utility service lines, poles, valve boxes, meters, and etcetera are to be adjusted as necessary by others prior to construction unless the plans specifically call for their adjustment by the Contractor or unless the plans specifically identify a utility to be adjusted by its owner during construction. Existing utilities and their location, as shown on the plans, represent the best information obtainable for design. The Contractor will be required to work around existing utilities within the right-of-way which do not conflict with proposed construction.
- Rubble from the removal of miscellaneous structures and excess excavation which is to be wasted shall be disposed of on sites to be provided by the Contractor. These sites shall be approved by the Engineer as to suitability, appearance and site location. Locations, in the opinion of the Engineer, that will leave an unsightly appearance will not be approved. All disposal sites must be approved by the Kansas Department of Health and Environment. Material either stockpiled or disposed of in a flood plain would require a Kansas State Board of Agriculture permit. Any material dumped in waters of the United States or wetlands is subject to U.S. Corps. of Engineers permitting regulations. Any material buried or stockpiled beyond approved construction limits would require additional archaeological investigations unless buried in a previously approved borrow location.
- The Contractor shall give all property owners and/or tenants of developed property abutting the construction of this project a minimum of ten (10) days notice prior to start of construction.
- The Contractor shall be responsible for preserving property irons. The Contractor will be required to re-establish any property irons which are damaged or destroyed by his construction operations. Such irons shall be re-established by a licensed land surveyor in accordance with state laws.
- The Engineering Division shall field locate water valves one time during construction when requested by the Contractor. It shall be the Contractor's responsibility to preserve such field locations during the construction process. Water valves, valve boxes or fire hydrants damaged during construction shall be repaired by Contractor at his own expense. Valve boxes and water meters within the project limits shall be adjusted to match field grades by the contractor.
- If traffic is impacted by construction, a traffic control plan must be submitted and approved by the City Traffic Engineer, Mike Armour at [traffic@wichita.gov](mailto:traffic@wichita.gov) before construction can begin. The Contractor shall be responsible for all traffic control measures to facilitate construction. All construction zone markings and signage shall conform to the latest version of Manual on Uniform Traffic Control Devices (MUTCD) as published by the US Dept. of Transportation, Federal Highway Administration. All costs associated with construction markings and signage shall be the Contractors responsibility.
- All elevations shown are U.S.G.S. Datum (NAVD 88).
- All areas disturbed during construction that will not be under proposed pavement shall be restored to match existing conditions.
- Contractor shall limit the extend of trench open overnight and weekends to less than 50 feet.
- The Contractor shall give all property owners and/or tenants of developed property abutting the construction of this project a minimum of ten (10) days notice prior to start of construction.
- Structure location coordinates are to the center of structure and are to be located with a coordinate datum per the provided control points.
- The Contractor shall protect from damage and support existing utilities through construction as approved by the utility owner and the Engineer at the Contractor's expense.

# ON CALL STORM SEWER & ALLEY IMPROVEMENTS

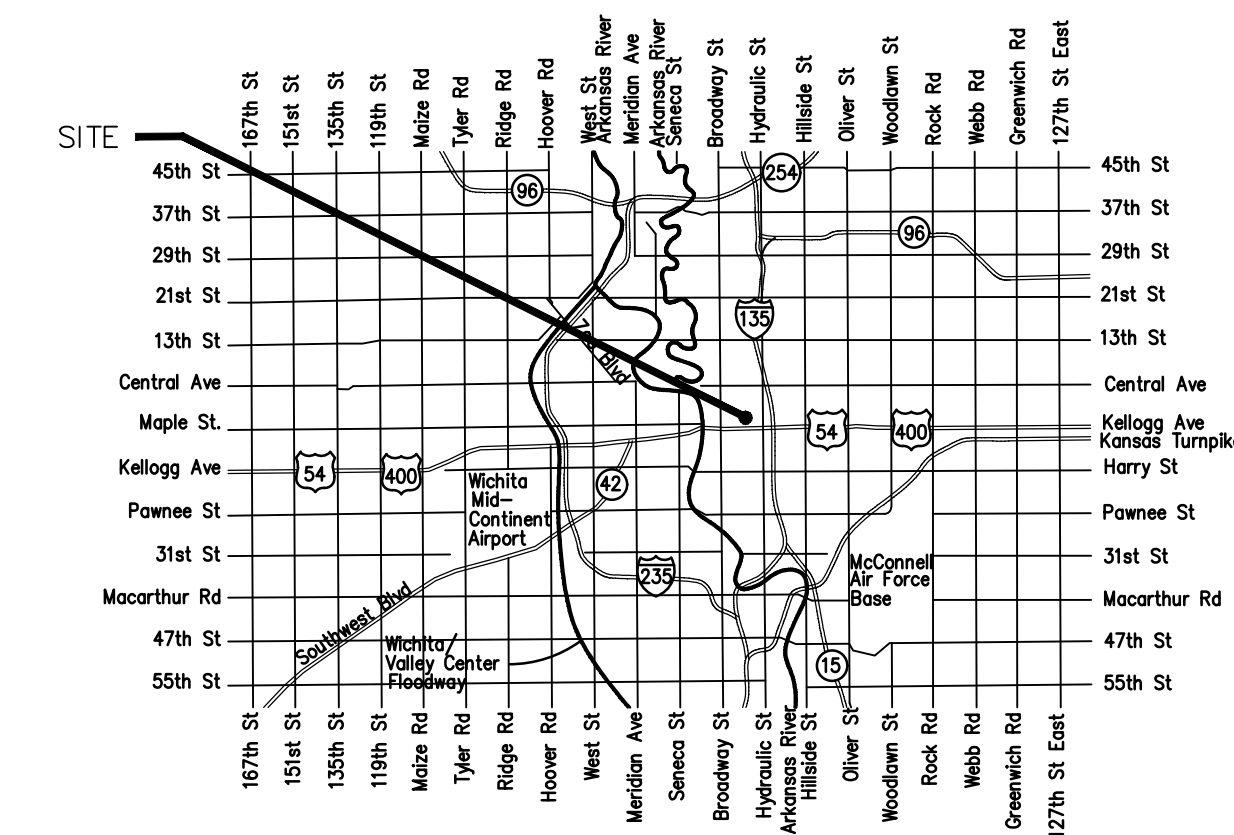
## to serve CITY OF WICHITA, KANSAS

Gary Janzen P.E. City Engineer  
 Project Number:  
 458- 2021-085489  
 SWS #760

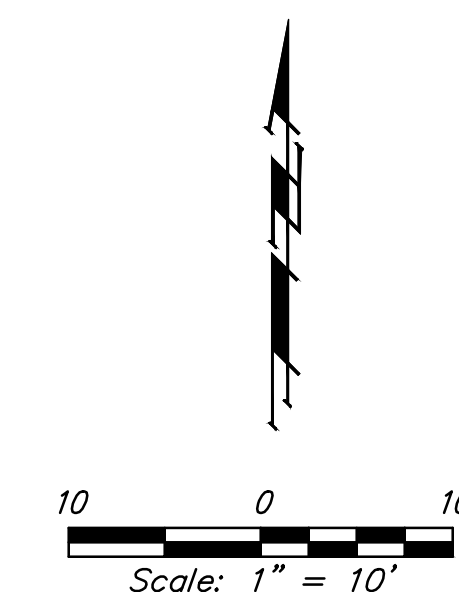
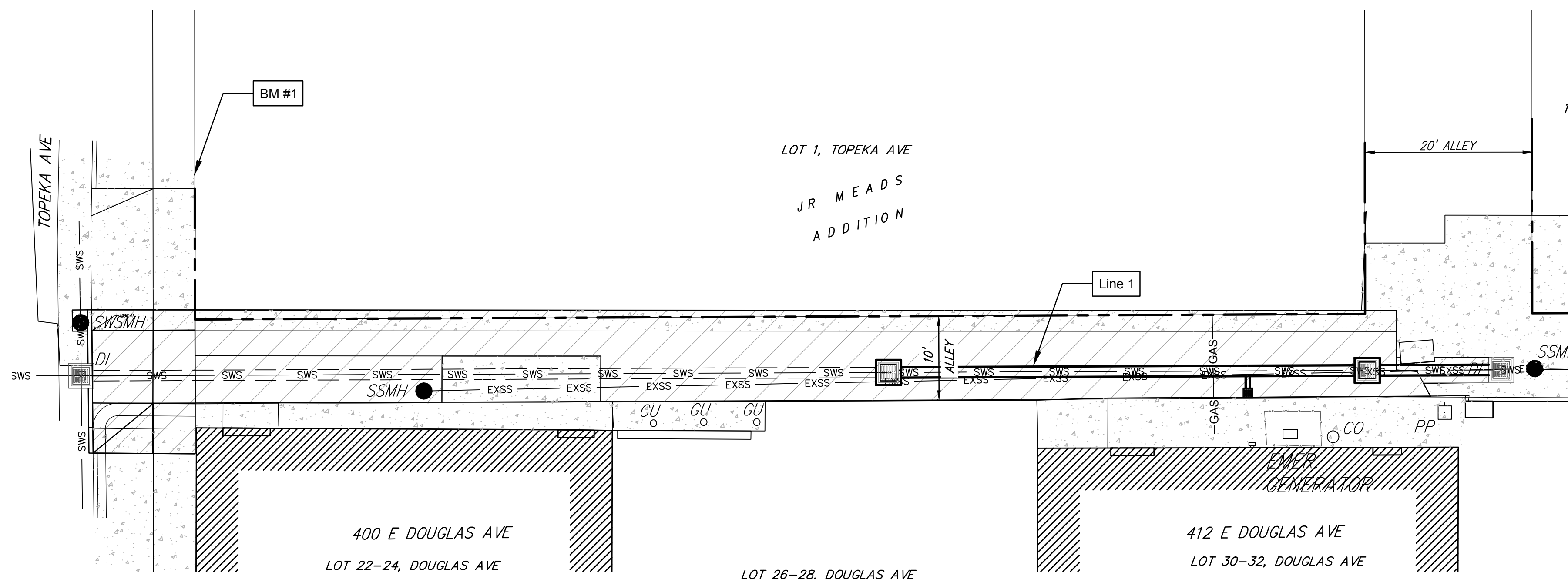
### SHEET INDEX:

Title Sheet	1
SWS Alley Line 1 Plan/Profile	2
Pavment Details	3
SWS INLET DETAILS	4

\*Current Stormwater Control Details are available at City of Wichita web site at <http://www.wichita.gov/PWU/StandardsConstruction/Forms/WebPageStandardsConstruction.aspx>



VICINITY MAP



### BENCHMARKS

BM #1  
 Cross cut on sidewalk near joint north of alley.  
 Elevation = 1297.37 (NAVD 88)

BM #2  
 Cross cut in Alley, 231.6' S of NW corner of building (400 E. Douglas) and 7.78' W of W Property Line  
 Elevation = 1297.09 (NAVD 88)

**Stormwater Certification:**

New Development or Redevelopment (Circle One)

Stormwater Permit # N/A

NOI Permit # N/A

These construction plans were prepared in accordance with the current Stormwater management Regulations as set forth in the City of Wichita's Stormwater Management Ordinance 16.32 and the policies/guidelines presented in the Wichita/Sedgwick County Stormwater Manual.

Site Area (Acres) = 0.005 acres

Disturbed Area (Acres) = 0.005 acres

Water Quality Treatment: \_\_\_\_\_

Downstream Channel Protection: \_\_\_\_\_

Detention: \_\_\_\_\_

The BMP used for this development is \_\_\_\_\_

APPROVED AS NOTED  
 BY WICHITA PUBLIC WORKS ENGINEERING  
 AND STORMWATER DIVISION

Engineering BF 12/20/21

Stormwater JH 1/28/22

#### NOTE TO CONTRACTORS

No work shall be performed the Contractor without such inspection nor shall any work be commenced without written authorization by the City Engineer. All Construction and Materials shall comply with the current City of Wichita Specifications and Standards and Special Provisions. (on file and available at Wichita.gov).

An approved copy of these plans signed by City staff are required on-site.

- Rev. 4 Per City RCP changes January 26, 2022
- Rev. 3 Added Trench Detail January 13, 2022
- Rev. 2 Revised Ramp to 6' Wide January 11, 2022
- Rev. 1 New Gas Line Asbuilt December 20, 2021  
November 17, 2021

