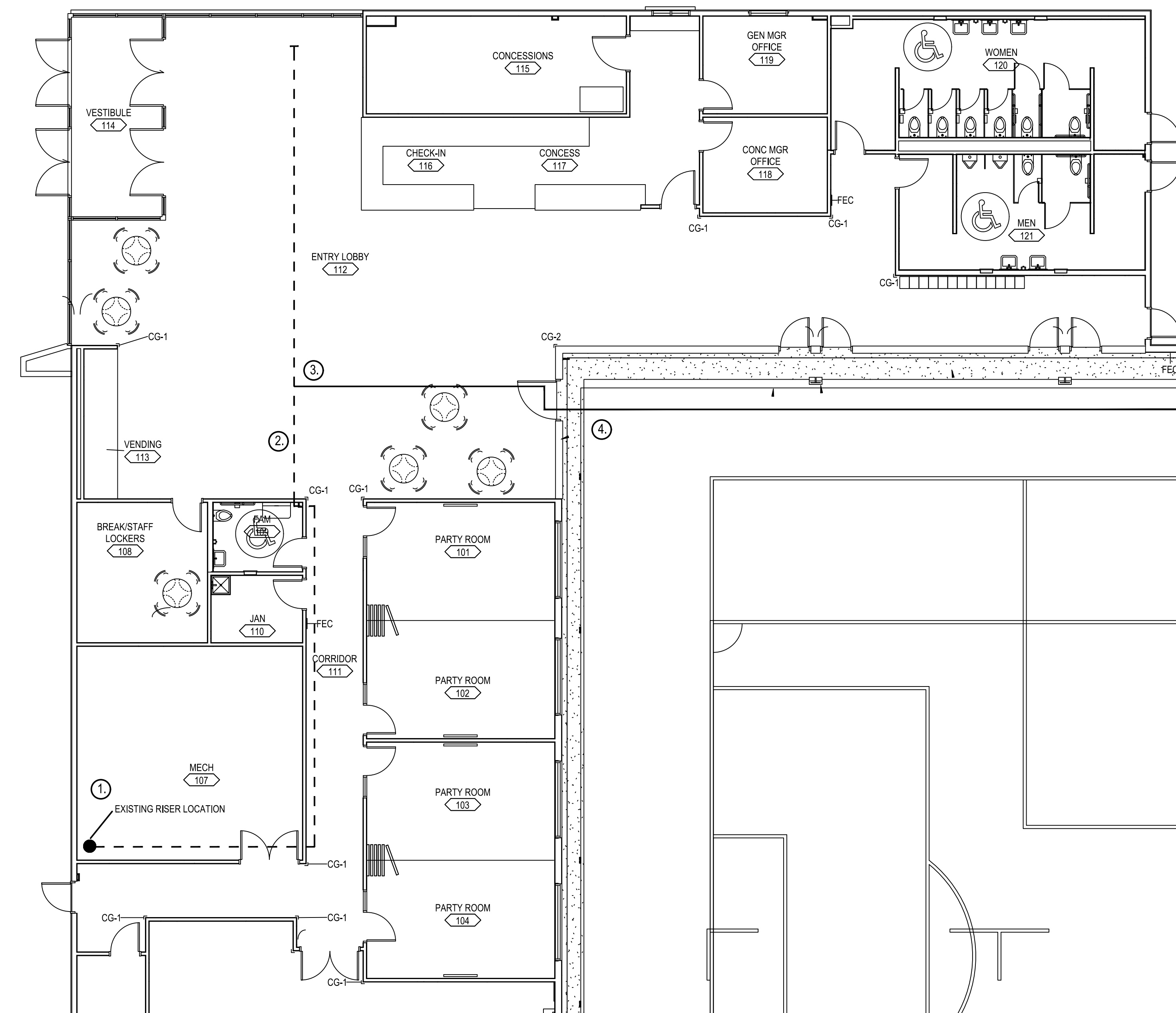


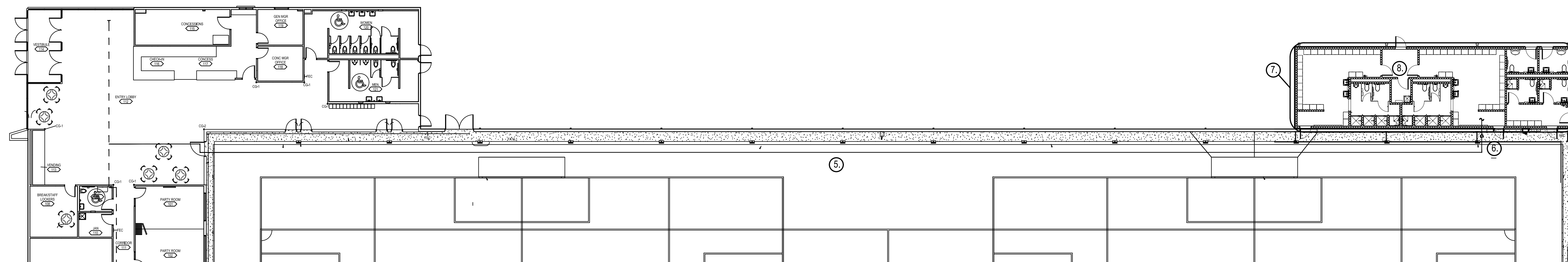
A OVERALL FACILITY REFERENCE PLAN - FIRE SPRINKLER MODIFICATIONS
1/32" = 1'-0" 0' 8' 16' 32' 64'

KEYED NOTES

1. EXISTING 4" RISER - CONTRACTOR TO PERFORM HYDRAULIC CALCULATIONS BACK TO EXISTING SUPPLY - RECENT FLOW TEST INFORMATION ON FILE WITH THE CITY OF WICHITA INDICATES A WATER SUPPLY AVAILABLE WITH 55 PSI STATIC PRESSURE AND 53 PSI RESIDUAL PRESSURE AT 1,021 GPM FLOW - CONTRACTOR TO OBTAIN NEW FLOW TEST INFORMATION FOR CALCULATIONS
2. 2 1/2" MAIN RUNNING PARALLEL TO ROOF AT STRUCTURE ABOVE
3. CONNECTION POINT UNDER THIS CONTRACT - TIE IN TO EXISTING MAIN
4. NEW 2 1/2" SUPPLY TO LOCKER ADDITION (CONTRACTOR TO VERIFY SIZING WITH HYDRAULIC CALCULATIONS) - ROUTE TIGHT TO STRUCTURE
5. ROUTE PIPING ABOVE EXISTING FACILITY NETTING - COORDINATE WITH G.C. AND OWNER FOR ACCESS AND PROPER CARE FOR EXISTING TURF BELOW
6. DROP TO FEED NEW ADDITION - KEEP PIPING TIGHT BEHIND EXISTING COLUMN
7. AREA OF PROTECTION UNDER THIS CONTRACT - PROVIDE COVERAGE FOR ENTIRE LOCKER ADDITION TO MEET LIGHT HAZARD NFPA 13 REQUIREMENTS
8. PROVIDE LOW POINT AUXILIARY DRAIN WITH 1" VALVE AT JANITOR'S CLOSET



B EXISTING LOBBY FIRE SPRINKLER CONNECTION LOCATION
1/8" = 1'-0" 0' 2' 4' 8' 16'



C FIRE SPRINKLER IMPROVEMENT PLAN - LOCKER ADDITION
1/16" = 1'-0" 0' 4' 8' 16' 32'