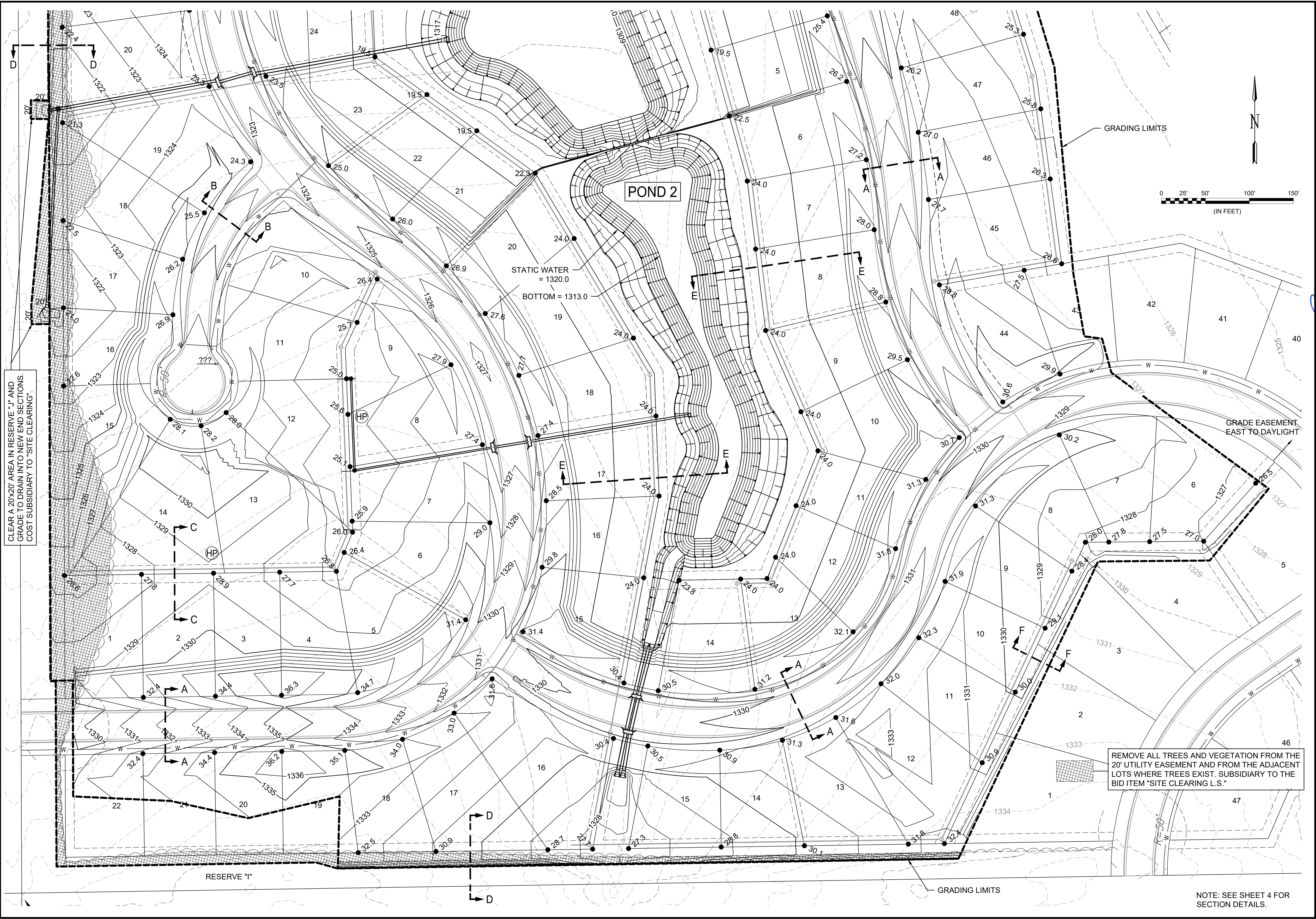


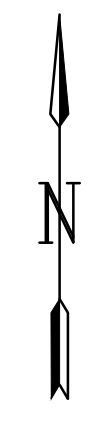
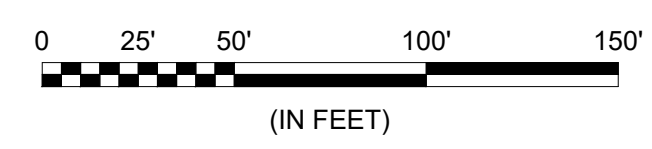
CLEAR 20'x20' AREA IN RESERVE "J" AND GRADE TO DRAIN INTO NEW END SECTIONS. COST SUBSIDIARY TO "SITE CLEARING".

CLEAR 20'x20' AREA IN RESERVE "J" AND GRADE TO DRAIN INTO NEW END SECTIONS. COST SUBSIDIARY TO "SITE CLEARING".

File: L:\2021\12\14\1002 - Clear Ridge Phase 2\Drawings\CD\21141002-GRADING PLANS.dwg Last Save: 2/3/2022 4:45 PM Last saved by: Dstandrich Last plotted by: Standrich, Darryl R Plot Style: Plot Style: 1:2.5849 Plot Date: 2/7/2022 11:31 AM Plotter Used: None

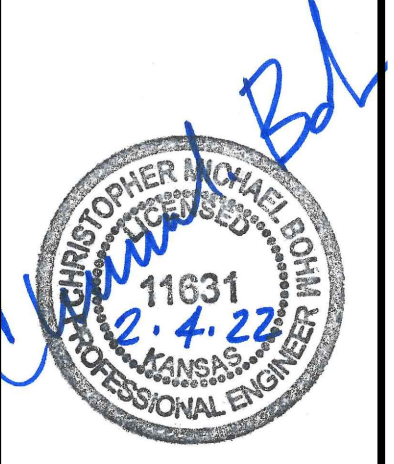


REMOVE ALL TREES AND VEGETATION FROM THE 20' UTILITY EASEMENT AND FROM THE ADJACENT LOTS WHERE TREES EXIST. SUBSIDIARY TO THE BID ITEM "SITE CLEARING L.S."



© 2021 GARVER, LLC. THIS DOCUMENT, ALONG WITH THE IDEAS AND DESIGNS CONVEYED HEREIN, SHALL BE CONSIDERED INSTRUMENTS OF PROFESSIONAL SERVICE AND ARE PROPERTY OF GARVER, LLC. ANY USE, REPRODUCTION, OR DISTRIBUTION OF THIS DOCUMENT, ALONG WITH THE IDEAS AND DESIGN CONTAINED HEREIN, IS PROHIBITED UNLESS AUTHORIZED IN WRITING BY GARVER, LLC OR EXPLICITLY ALLOWED IN THE GOVERNING PROFESSIONAL SERVICES AGREEMENT FOR THIS WORK.

1995 Midfield Road
Wichita, KS 67209
(316) 264-8008



REV.	DATE	DESCRIPTION	BY



CITY OF WICHITA
WICHITA, KANSAS
CLEAR RIDGE ADDITION
PHASE 2 - STORM WATER

GRADING PLAN SOUTH

JOB NO.: 21T41002
DATE: FEB. 2022
DESIGNED BY: CMB
DRAWN BY: DRS

BAR IS ONE INCH ON ORIGINAL DRAWING
IF NOT ONE INCH ON THIS SHEET, ADJUST SCALES ACCORDINGLY.

DRAWING NUMBER

SHEET NUMBER 3 OF 37

NOTE: SEE SHEET 4 FOR SECTION DETAILS.