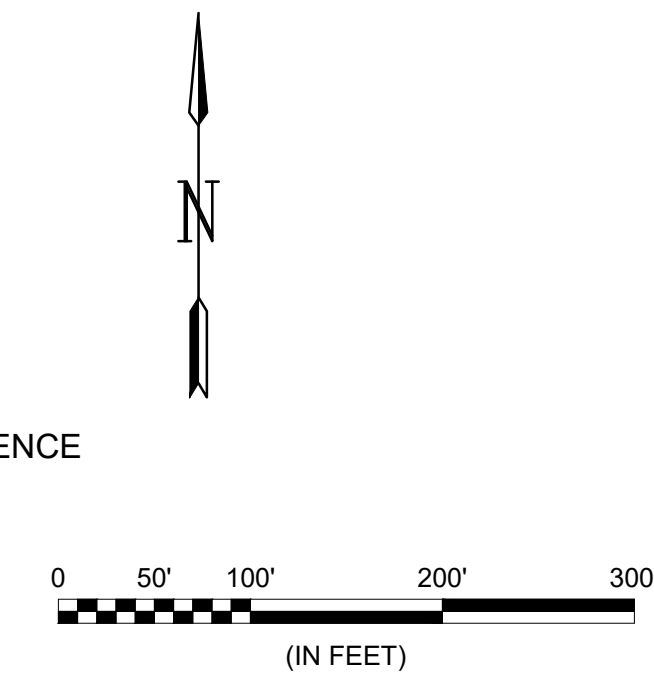
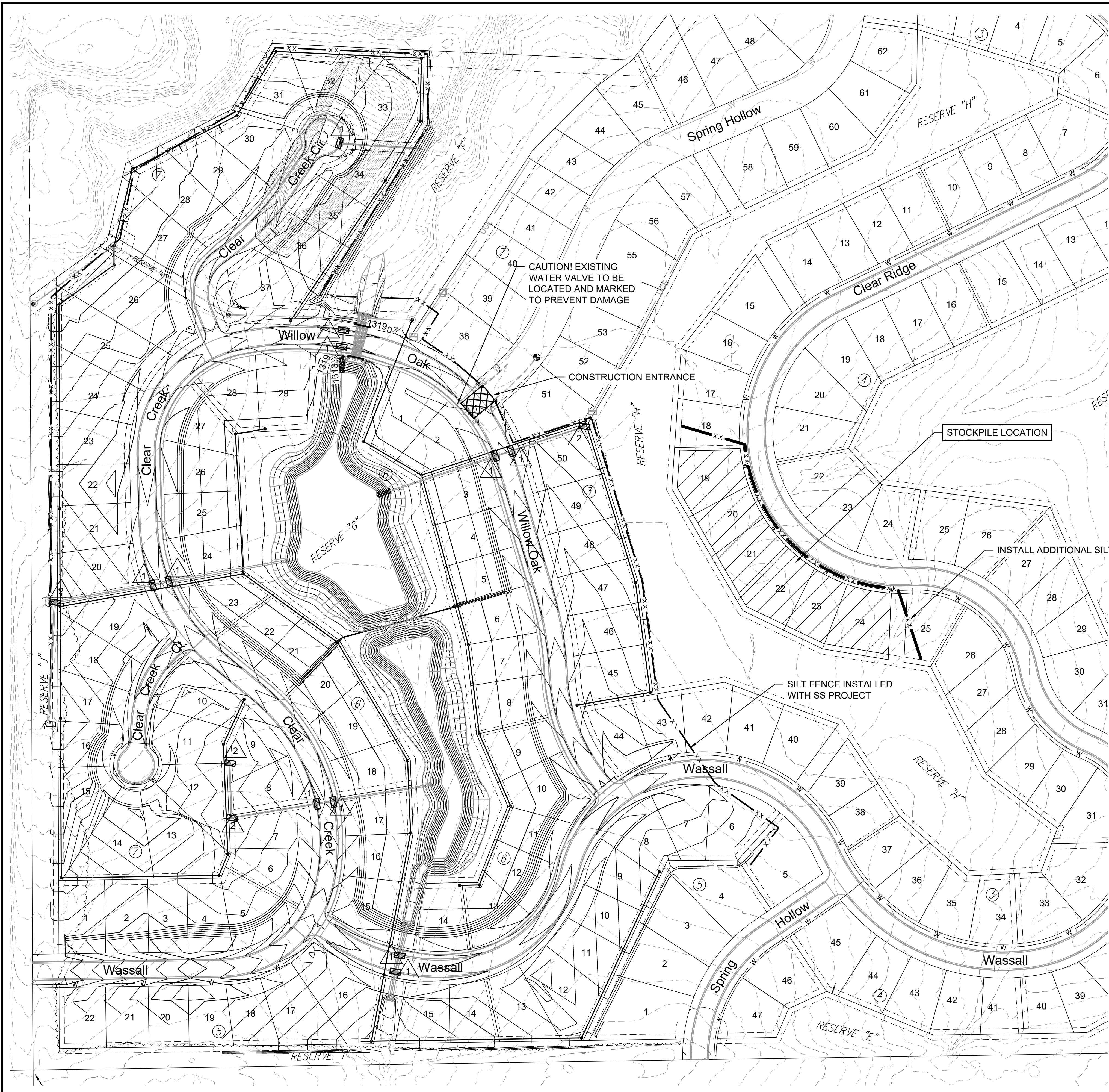
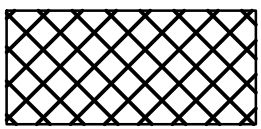


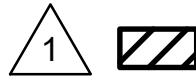



File: L:\2021\12\14\1002 - Clear Ridge Phase 2\Drawings\CDD\21T41002 Erosion Control.dwg Last Save: 2/7/2022 8:57 AM Last saved by: DRStandrich
 Last plotted by: Standrich, Darryl R. Plot Style: --- Plot Scale: 1:2,5849 Plot Date: 2/7/2022 11:40 AM Plotter used: None



- LEGEND**
-  MAINTAIN CONSTRUCTION ENTRANCE (1 EACH)
 -  MAINTAIN SILT FENCE (3800 LIN. FT.)
 -  INSTALL ADDITIONAL SILT FENCE (705 LIN. FT.)
 -  INSTALL CURB INLET PROTECTION (11 EACH)
 -  INSTALL DROP INLET PROTECTION (4 EACH)

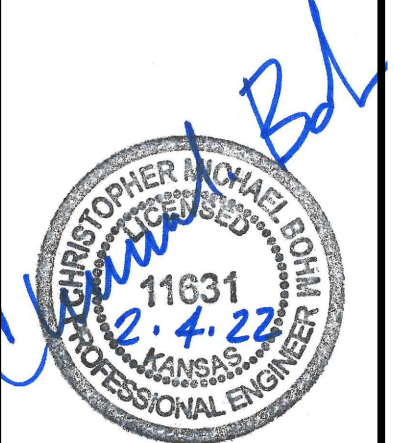
NOTE:
 Detention ponds will act as sediment retention basins during construction.

Area disturbed = 41.4 Acres
 Silt Volume Storage Required = 41.4 X 3600/27 = 5,520 C.Y.
 Pond Volume = 38,500 CY



© 2021 GARVER, LLC
 THIS DOCUMENT, ALONG WITH THE IDEAS AND DESIGNS CONVEYED HEREIN, SHALL BE CONSIDERED INSTRUMENTS OF PROFESSIONAL SERVICE AND ARE PROPERTY OF GARVER, LLC. ANY USE, REPRODUCTION, OR DISTRIBUTION OF THIS DOCUMENT, ALONG WITH THE IDEAS AND DESIGN CONTAINED HEREIN, IS PROHIBITED UNLESS AUTHORIZED IN WRITING BY GARVER, LLC OR EXPLICITLY ALLOWED IN THE GOVERNING PROFESSIONAL SERVICES AGREEMENT FOR THIS WORK.

1995 Midfield Road
 Wichita, KS 67209
 (316) 264-8008



REV.	DATE	DESCRIPTION	BY



EROSION CONTROL PLAN

JOB NO.: 21T41002
 DATE: FEB. 2022
 DESIGNED BY: CMB
 DRAWN BY: DRS

BAR IS ONE INCH ON ORIGINAL DRAWING
 IF NOT ONE INCH ON THIS SHEET, ADJUST SCALES ACCORDINGLY.