

WATER DISTRIBUTION SYSTEM

to serve

TURKEY CREEK 4TH ADDITION - PHASE 1B

CITY OF WICHITA, KANSAS

Gary Janzen, P.E. City Engineer

Project Number 448-2020-016823

Org Code Number 47117620

Munis Number E0124

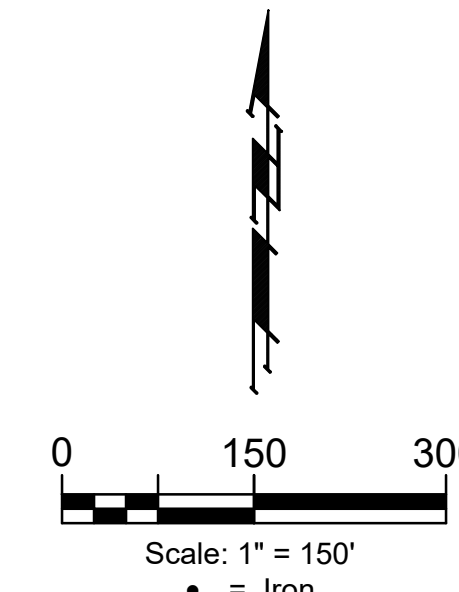
GENERAL NOTES:

- Contractor will be required to provide notice to utility companies a minimum of seventy-two (72) hours prior to any excavation, as follows:

Kansas One-Call 687-2470

The Contractor must notify the following in case of an emergency:

Cox Communications 262-4270
Kansas Gas Service 1-888-482-4950
Westar Energy 383-8650
Aquila Energy 1-800-303-0357
AT&T 268-2245
City of Wichita Water Dept. 268-4563
City of Wichita Sewer Maint. 268-4024
City of Wichita Storm Sewer Maint. 268-4090
City of Wichita Traffic Maint. 268-4034
Conoco Phillips Pipeline Co. 1-877-267-2290
Southern Star Pipeline Co. 529-6600
Kinder-Morgan Pipeline Co. 1-888-844-5658
- The Contractor shall adjust water valve boxes and fire hydrants as directed by the Engineer at the price bid for said adjustments. The Water Department shall field locate water valves one time during construction when requested by Contractor. It shall be the Contractor's responsibility to preserve such field locations during the construction process. Water valves, water valve boxes or fire hydrants damaged during construction shall be repaired by the Contractor at his own expense.
- All construction shall be completed following current City Standard Specifications and Special Provisions.
- All excess excavation shall remain on-site and shall be stockpiled or spread at a location determined by the engineer.
- Opening and closing of water valves shall be done slowly to prevent damage to the water distributions system from water hammer. All valves closed by the contractor must be reopened as new construction permits. Project inspector must ascertain that any valve closed by the Contractor is reopened. Contractor will be permitted to operate water valves only when the project inspector assigned to the project is present.
- Maintain a minimum of 10-foot horizontal separation between all water lines (mains, services, and fire hydrants) and all sanitary sewer lines (mains, services, and manholes). All separation distances are to be measured from edge-to-edge, at the closest point.
- Maintain a minimum of 2-foot vertical separation between all water lines (mains and services) and all gravity sanitary sewer lines (mains, services, and manholes) at crossings. All separation distances are to be measured from edge-to-edge, at the closest point.
- Maintain a minimum of 2-foot vertical separation between all water lines (mains and services) and all pressurized sanitary sewer lines (force mains and services) at crossings. Waterlines must always be placed above pressurized sanitary sewer lines where they cross. All separation distances are to be measured from edge-to-edge, at the closest point.
- The Developer for this project is Paul Kelsey; 716 N. 119th St. #112, Wichita, KS 67212 PH# (316)722-1077 email: paul.kelsey8@gmail.com



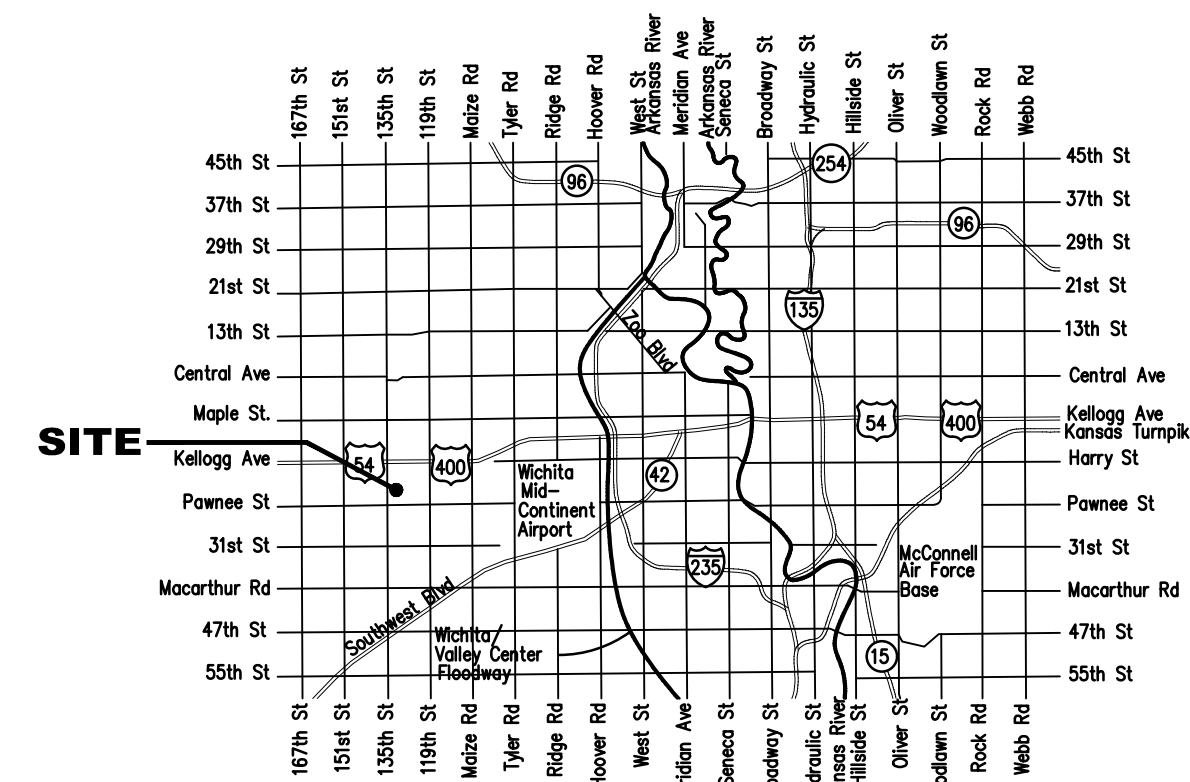
SHEET INDEX

Title Sheet	1
Standard Water Details	2
Water Service Details	3
Line 1	4
Line 2	5-6
Line 3	7
Erosion Control Plan	8
Erosion Control Details	9-13
Coordinates	14-15
Copy of Plat	16

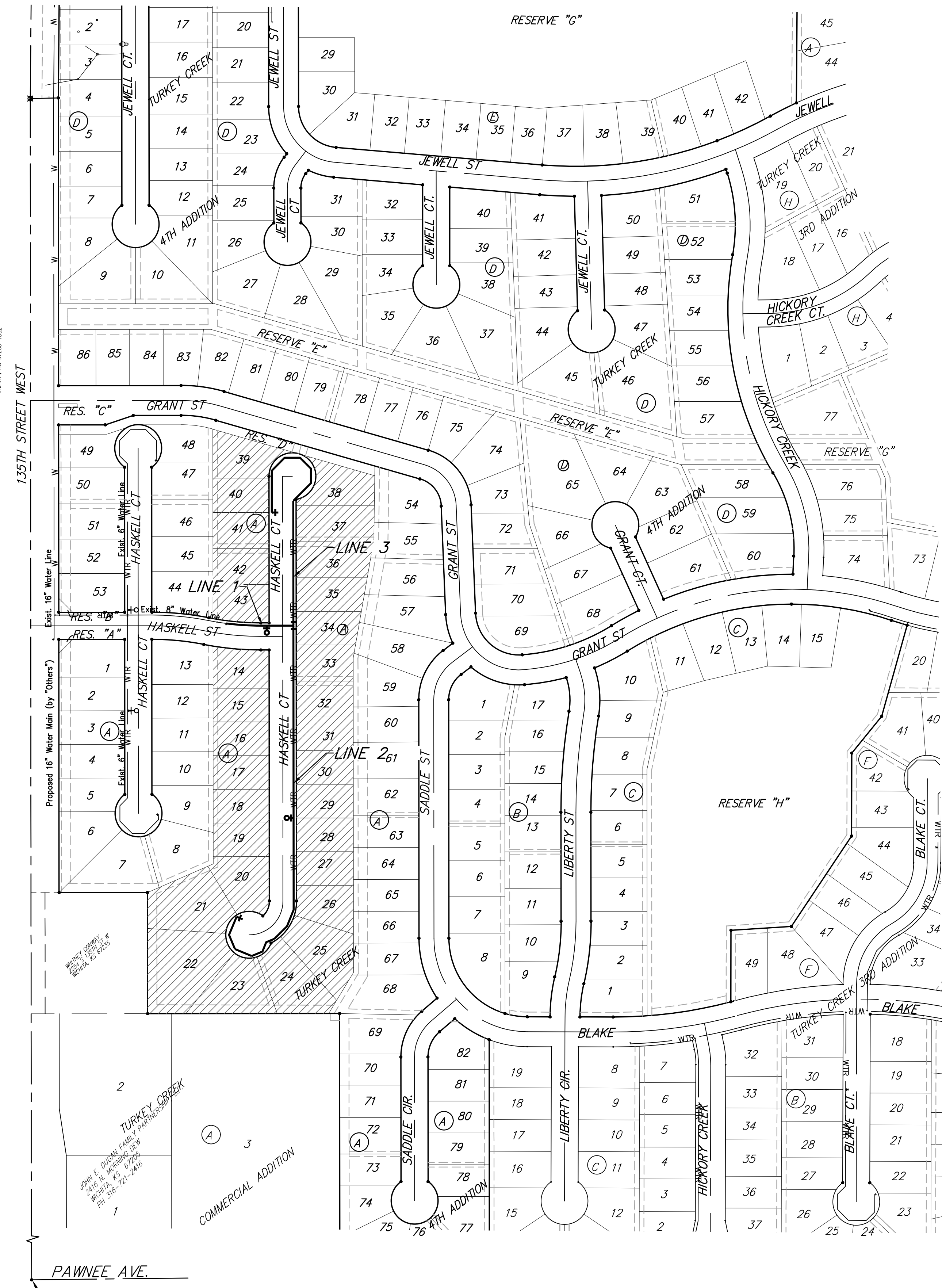
BENCHMARKS

135th St. W. & Pawnee
City of Wichita Benchmark Disc,
Northeast Corner of Intersection
On SW Corner of Concrete Base
of High Line Pole.
Elev. = 1359.65 NGVD29

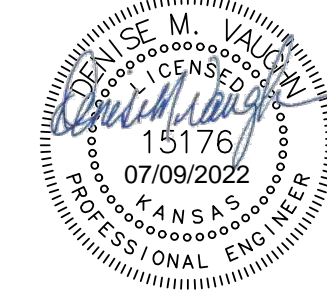
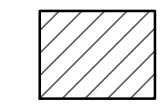
City of Wichita Benchmark Disc,
0.4 Mi. South of Kellogg On
135th St. W., West Side of
Concrete Base for High Line
Pole, West of K.G.&E.
Substation, 135 \pm South of
Railroad Tracks On East Side of
135th St. W.
Elev. = 1367.77 NGVD29



VICINITY MAP



BENEFIT DISTRICT



BAUGHMAN COMPANY
315 Ellis St. Wichita, KS 67211 316-262-7271
BaughmanCo.com

E:\Projects\Turkey Creek 4th - Engineering\Phase 1B\WTR 21-09-ED14.DWG