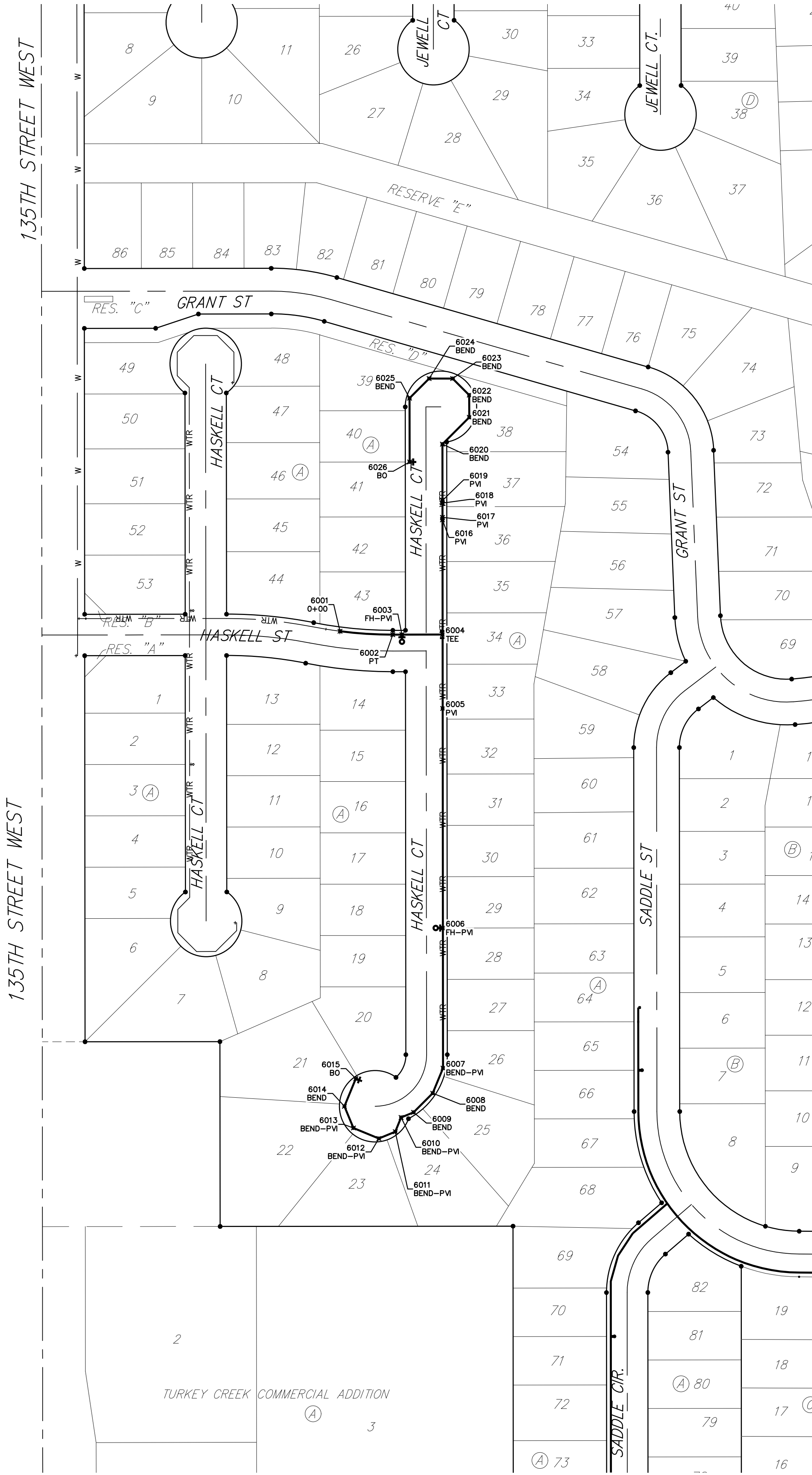


BENCHMARKS:
 135th St. W. & Pawnee
 City of Wichita Benchmark Disc,
 Northeast Corner of Intersection
 On SW Corner of Concrete Base
 of High Line Pole.
 Elev. = 1359.65 NVD29

City of Wichita Benchmark Disc,
 0.4 Mi. South of Kellogg On
 135th St. W., West Side of
 Concrete Base for High Line
 Pole, West of K.G.&E.
 Substation, 135'± South of
 Railroad Tracks On East Side of
 135th St. W.
 Elev. = 1367.77 NVD29

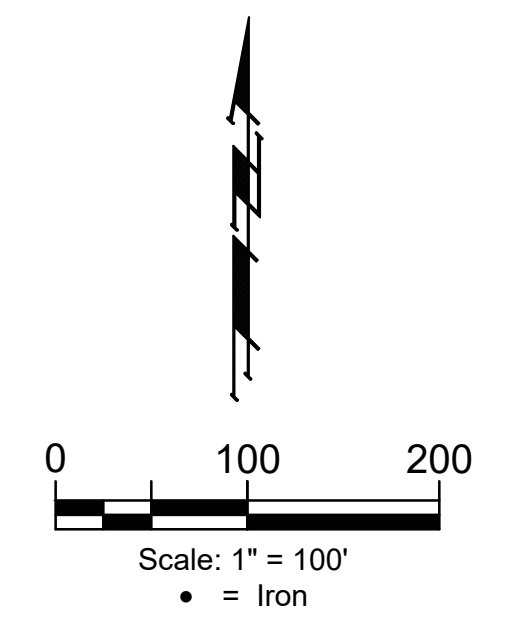


IRONS		
Point #	Northing	Easting
5	27,408.65	26,374.75
6	27,409.88	26,290.75
7	27,411.88	25,540.53
8	27,981.91	25,539.98
9	27,981.51	25,129.18
10	28,240.67	25,128.92
11	28,240.49	24,939.72
14	28,940.46	24,938.07
15	30,213.73	24,940.55
16	30,277.72	24,941.13
17	30,421.04	24,942.43
18	30,395.11	25,231.07
19	30,610.28	25,233.01
20	30,524.78	26,190.13
21	30,499.70	26,189.92
22	30,485.79	26,345.67
71	28,006.87	26,376.95
72	27,974.32	26,125.45
73	27,910.32	26,125.28
74	27,974.51	26,054.26
75	27,974.68	25,990.26
76	27,910.67	25,993.09
77	27,910.52	26,051.09
80	27,910.81	25,941.20
81	27,974.81	25,941.37
82	27,970.70	25,786.25
83	28,014.66	25,748.42
84	27,986.71	25,715.93
85	27,942.74	25,753.76
86	27,888.80	25,671.07
87	27,888.85	25,729.07
88	27,622.15	25,671.33
89	27,622.21	25,729.33
90	28,142.58	25,709.82
91	28,142.65	25,773.82
92	30,212.52	25,073.80
93	30,212.00	25,131.80
94	30,210.29	25,320.49
95	30,274.29	25,321.06
96	30,271.74	25,345.71
97	30,290.96	25,354.26
139	30,475.38	26,521.52
140	29,929.91	26,517.25
141	29,901.66	26,461.55
144	30,248.17	25,398.71
145	29,848.82	26,347.31
146	30,267.38	25,407.25
147	29,787.72	26,366.65
148	29,779.67	26,369.20
150	29,731.65	26,100.33
151	29,730.05	26,042.35
152	29,749.70	25,775.56
153	29,754.62	25,717.56
154	30,319.17	25,360.39
155	30,335.13	25,360.53
156	30,318.65	25,418.38
157	30,334.60	25,418.53
158	30,384.94	25,474.06
159	30,442.71	25,479.22
160	30,363.75	26,363.22
161	30,310.67	26,305.50
162	29,747.64	25,399.26
163	29,747.70	25,457.26
164	29,813.57	25,421.38
165	29,820.82	25,426.86
166	29,922.08	25,388.09
167	29,922.15	25,452.09
168	29,710.86	25,074.29
169	29,710.92	25,132.29
170	29,778.55	25,467.61
171	29,785.79	25,473.09
185	28,883.51	26,740.78
186	28,822.84	26,720.40
187	28,918.61	26,573.78
188	28,921.58	26,509.85
189	28,960.37	26,511.65
190	28,957.39	26,575.59
191	29,770.78	25,527.23

IRONS		
Point #	Northing	Easting
192	28,834.55	25,532.64
193	30,142.36	25,387.87
194	30,142.43	25,451.87
195	28,868.09	26,233.08
196	28,844.22	26,180.23
197	28,811.46	26,121.63
198	28,757.09	26,155.39
199	28,721.09	26,085.33
200	28,700.51	26,024.73
201	29,325.00	24,938.67
202	29,241.00	24,938.75
203	29,241.09	25,038.75
204	29,261.15	25,098.73
205	29,325.25	25,200.87
206	29,261.25	25,200.94
207	29,250.82	25,275.24
208	29,312.33	25,292.93
209	29,130.90	25,388.86
210	29,081.60	25,446.91
211	28,840.13	25,080.14
212	28,840.19	25,138.14
219	28,782.13	25,080.20
220	28,782.00	24,939.20
221	28,782.19	25,138.20
222	28,840.00	24,939.14
223	28,828.31	25,260.40
224	28,771.41	25,249.19
225	28,817.53	25,371.39
226	28,817.55	25,389.16
227	28,450.52	25,080.52
228	28,450.58	25,138.52
229	28,759.53	25,371.45
230	28,759.55	25,389.22
231	28,222.36	25,389.74
232	28,190.53	25,375.84
233	28,132.55	25,393.36
234	28,222.42	25,447.74
235	28,653.07	25,709.32
236	28,653.14	25,773.32
237	28,758.16	25,761.27
238	28,707.27	25,800.08
239	28,723.24	25,821.02
240	28,774.13	25,782.20
241	28,749.17	25,830.83
242	28,685.35	25,935.65
243	28,060.20	26,000.19
244	28,045.70	26,062.52
245	28,179.19	26,013.79
246	28,179.25	26,077.79
247	28,412.28	26,013.56
248	28,412.34	26,077.56
249	28,628.34	26,030.79
250	28,618.13	26,093.97
251	28,977.36	26,120.08
252	29,001.24	26,172.94
253	28,835.42	25,766.95
254	28,838.06	25,830.90
302	29,067.36	25,757.36
303	29,070.01	25,821.31
304	29,125.31	25,711.82
305	29,186.82	25,729.51
306	29,733.34	25,968.21
307	29,797.11	25,973.62
308	29,605.20	26,380.86
312	29,138.16	26,467.05
322	29,486.77	26,107.07
323	29,485.18	26,049.09
324	27,411.02	25,860.53
325	28,857.59	26,506.87
326	29,581.59	25,775.72
327	29,581.53	25,717.72
328	28,617.63	26,699.88
329	28,538.87	26,635.77
330	29,673.07	25,399.33
331	29,673.12	25,457.33
332	28,361.39	26,635.29
333	28,168.19	26,506.60
334	28,159.70	26,377.36

CONTROL POINTS				
Point #	Northing	Easting	ELEVATION	Description
501	32584.25	24901.96	1368.70	NWCOR
502	32612.53	27513.28	1325.61	N1\WCOR
503	29999.21	30061.99	1333.50	E1\WCOR
504	27360.78	29997.18	1338.20	SECOR
505	27353.64	24880.59	1358.02	SWCOR
506	29939.11	24878.07	1366.43	W1\WCOR
507	29997.85	27492.82	1334.18	CTR
508	27346.81	27439.22	1333.41	S1\WCOR
600	27336.68	26119.57	1339.21	R
601	27364.65	28223.19	1330.75	R
602	29803.90	30075.28	1334.18	N
603	29939.45	24908.10	1365.98	AMPAS
606	29999.06	30022.07	1332.77	ARMS
702	27442.50	24976.73	1358.33	CP
710	32566.65	26958.64	1325.10	CP
718	30423.52	24912.64	1365.69	AMPAS
801	27376.51	29966.08	1336.36	PK
802	27442.50	24976.73	1358.33	CP
803	29899.34	24954.88	1364.55	CP
804	30073.40	27453.20	1336.70	CP
810	32566.64	26958.64	1325.10	CP
811	32473.94	26206.49	1339.68	ABF
812	30624.50	26190.89	1351.93	ABF
813	30569.47	26223.82	1353.88	CP
815	31305.15	27502.90	1331.34	ABF
816	30731.98	27498.38	1330.43	ABF
817	30351.39	24911.86	1364.84	ABF
822	27390.46	30036.25	1336.08	BMCOV
843	30634.08	24962.62	1368.48	N
845	27365.81	28315.31	1334.40	BMCOV

WATER LINE POINTS			
Point #	Northing	Easting	Description
6001	28816.23	25297.40	0+00
6002	28811.53	25371.40	PT
6003	28811.55	25384.17	FH-PW
6004	28811.60	25441.17	TEE
6005	28708.00	25441.27	PVI
6006	28399.99	25441.57	FH-PW
6007	28203.46	25441.76	BEND-PVI
6008	28168.42	25427.29	BEND
6009	28141.59	25400.51	BEND
6010	28134.32	25383.01	BEND-PVI
6011	28114.42	25374.79	BEND-PVI
6012	28104.87	25351.79	BEND-PVI
6013	28119.59	25316.14	BEND-PVI
6014	28149.99	25303.52	BEND
6015	28188.81	25319.55	BO
6016	28972.40	25441.01	PVI
6017	28976.00	25441.01	PVI
6018	28996.00	25440.99	PVI
6019	28999.60	25440.99	PVI
6020	29078.60	25440.91	BEND
6021	29116.36	25478.60	BEND
6022	29147.44	25478.57	BEND
6023	29170.69	25455.27	BEND
6024	29170.66	25422.36	BEND
6025	29143.09	25394.85	BEND
6026	29053.56	25394.93	BO



BAUGHMAN COMPANY
 315 Ellis St.
 Wichita, KS 67211
 316-262-7271
 BaughmanCo.com

TURKEY CREEK 4TH
 ADDITION - PHASE 1B

COORDINATES
 WATER DISTRIBUTION
 SYSTEM

PROJECT NUMBER:
 448-2020-016823

DESIGN: DMV DRAWN: JAK
 DATE: June 23, 2022

SHEET OF
15 16

File: E:\Projects\Turkey Creek 4th - Engineering\Phase 1B\WTR 21-09-E014.DWG