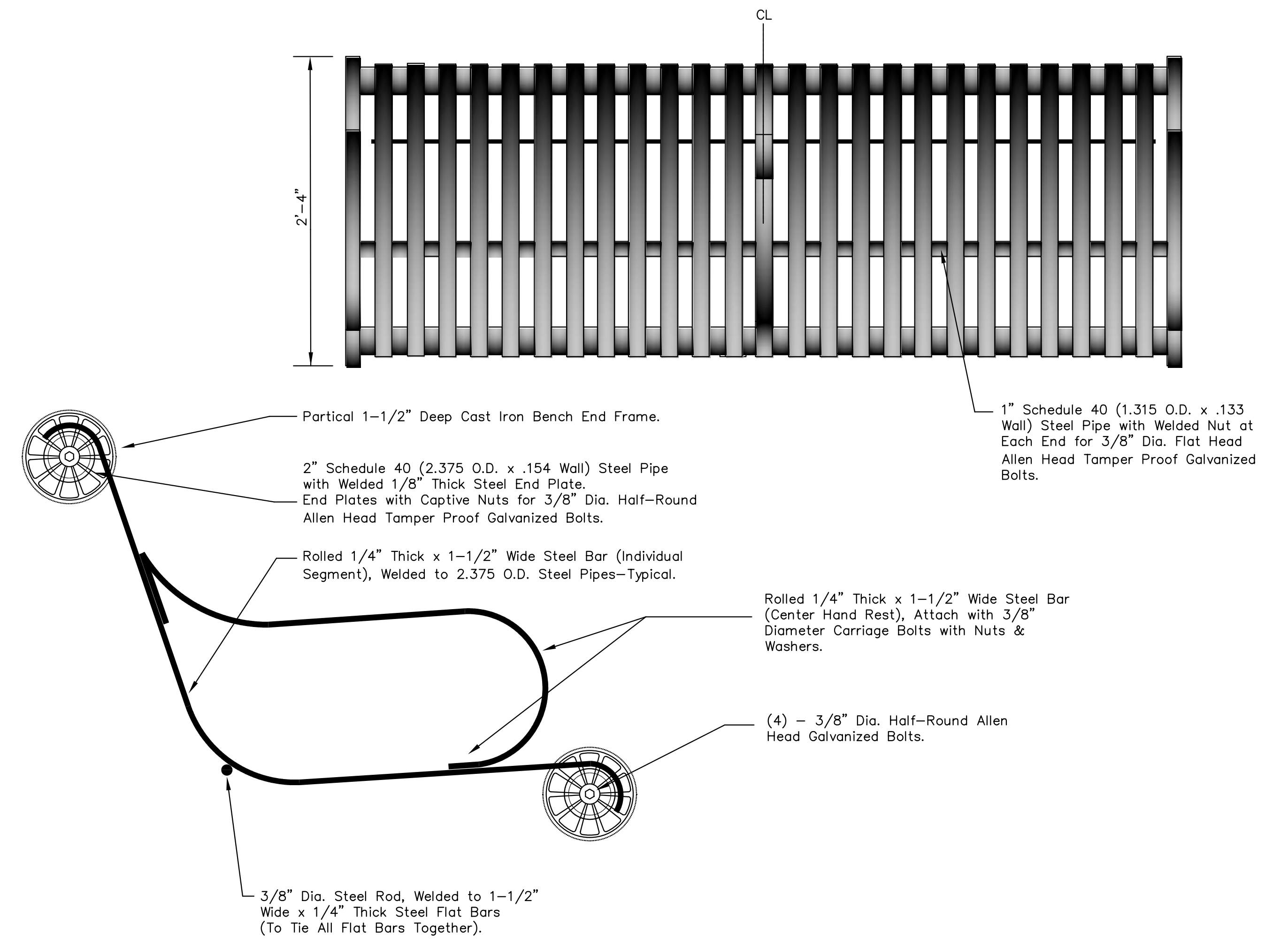
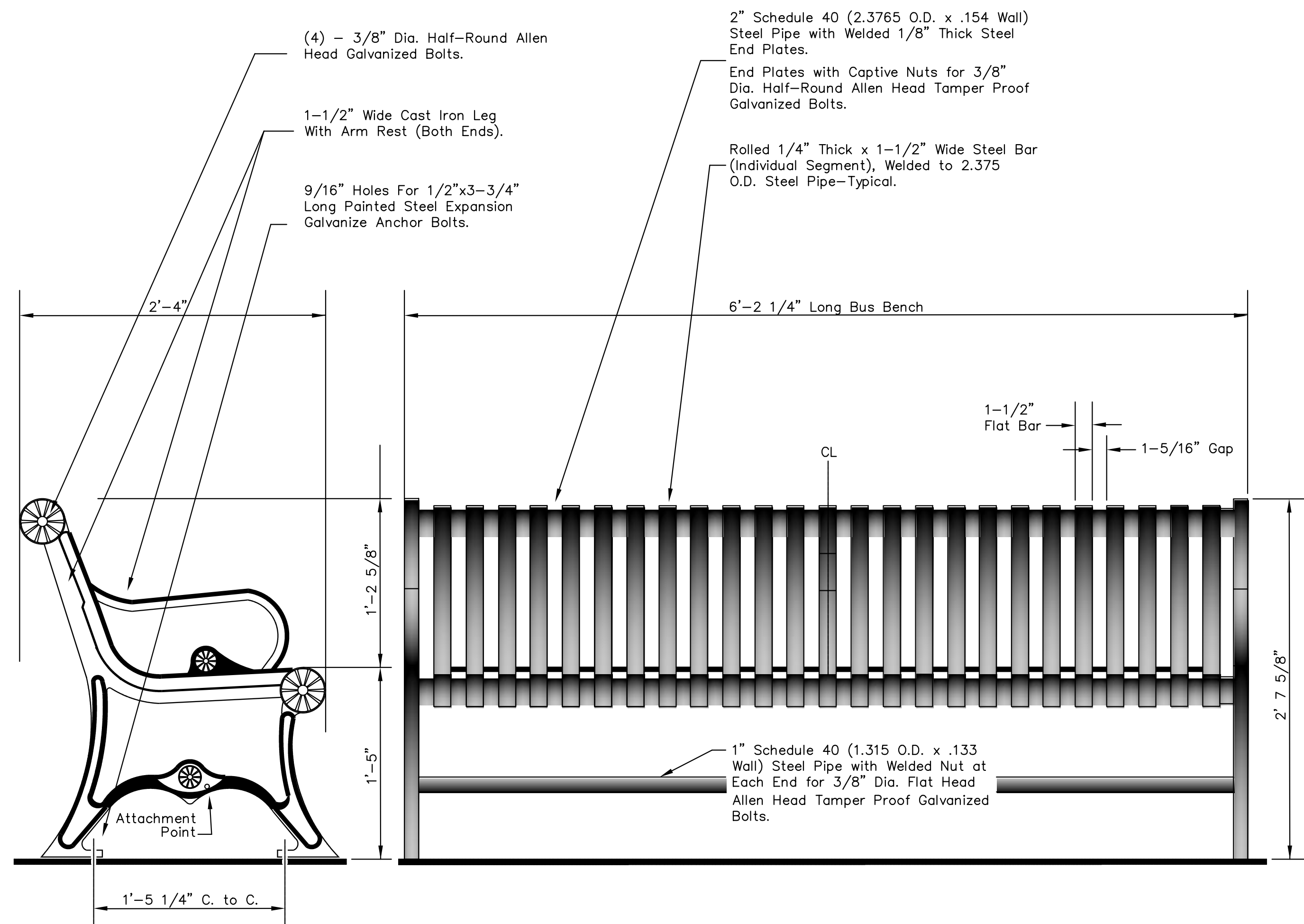


NOTE:

Entire Bench Structure to Match Cardinal #17038 Black, 90% Gloss Powder Coated Finish.



<p>CITY OF WICHITA PUBLIC WORKS & UTILITIES ENGINEERING DIVISION</p>	<p>AUGUST 2015</p> <p>BUS BENCH STANDARD DETAILS</p>		
	<p>CITY ENGINEER GARY JANZEN, P.E.</p>		
	<p>PROJECT NUMBER E1010-40250621</p>	<p>OCA NUMBER oca no</p>	<p>DATE 7/13/2022</p>
	<p>CITY ENGINEER'S OFFICE CITY HALL - SEVENTH FLOOR 455 NORTH MAIN STREET WICHITA, KANSAS 67202-1620 (316) 268-4501</p>		<p>SHEET 20 20 OF 128</p>