

WIRING DIAGRAM

NOTES:

The controller cabinet shall be constructed of 5052 alloy aluminum 0.125" (inch) thick. The cabinet shall be of clean cut design having no sharp edges, corners or projections.

The controller shall increase in size with the number of circuits.

The customer door shall be hinged the full length of the door and have suitable means of holding the door in the fully open position.

The dead front door shall be hinged and have 3/4 turn clips or other suitable means of locking.

Service entrance in back of controller shall have a hinged or a lift off cover with pad lock provisions.

The secondary breaker for the photo-cell circuit shall be 277 volt, 15 amp single pole.

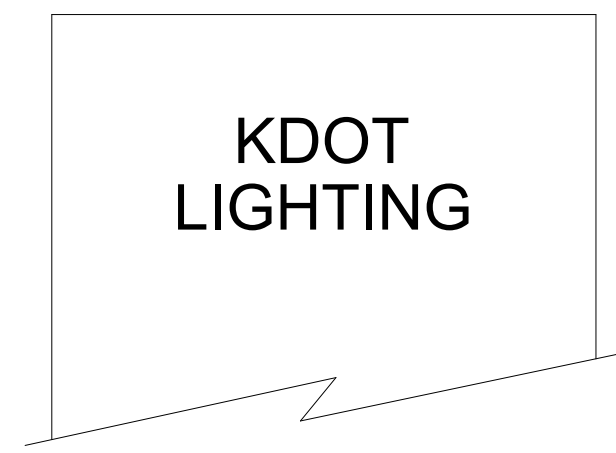
The wiring from PB1 and PB2 to T1 through T4 shall be No. 6 AWG THW.

The wiring for the load and line side of the main breaker shall be the same size with the wire.

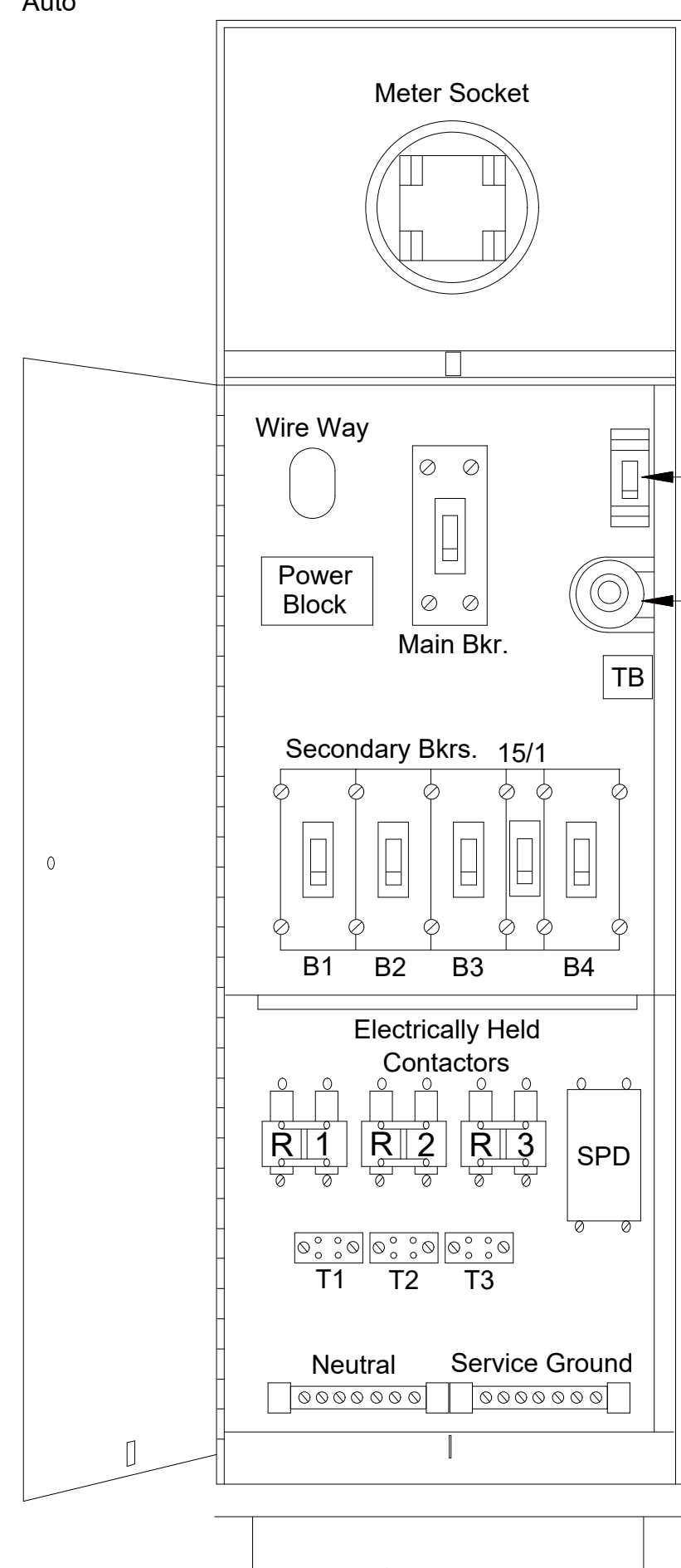
The wiring for the photo electric control circuit shall be No. 12 AWG THW.

All wiring and wiring methods shall comply with the most current national electric code standards. Any changes to these standards shall be approved by the authority having jurisdiction.

FRONT PANEL

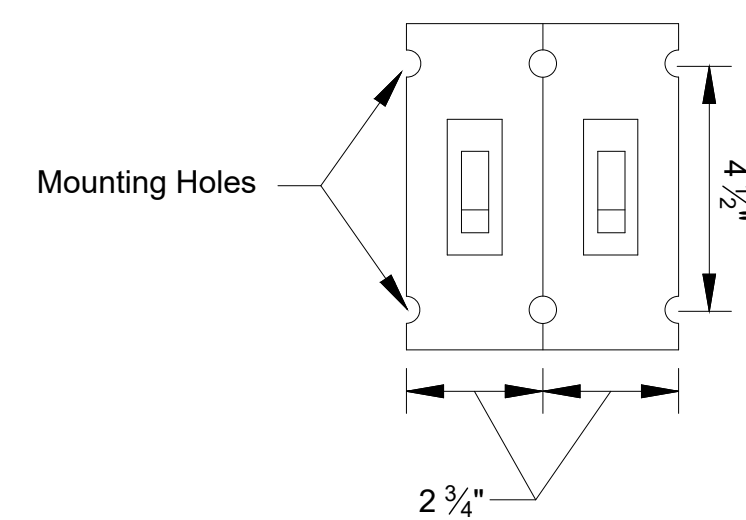


FRONT VIEW

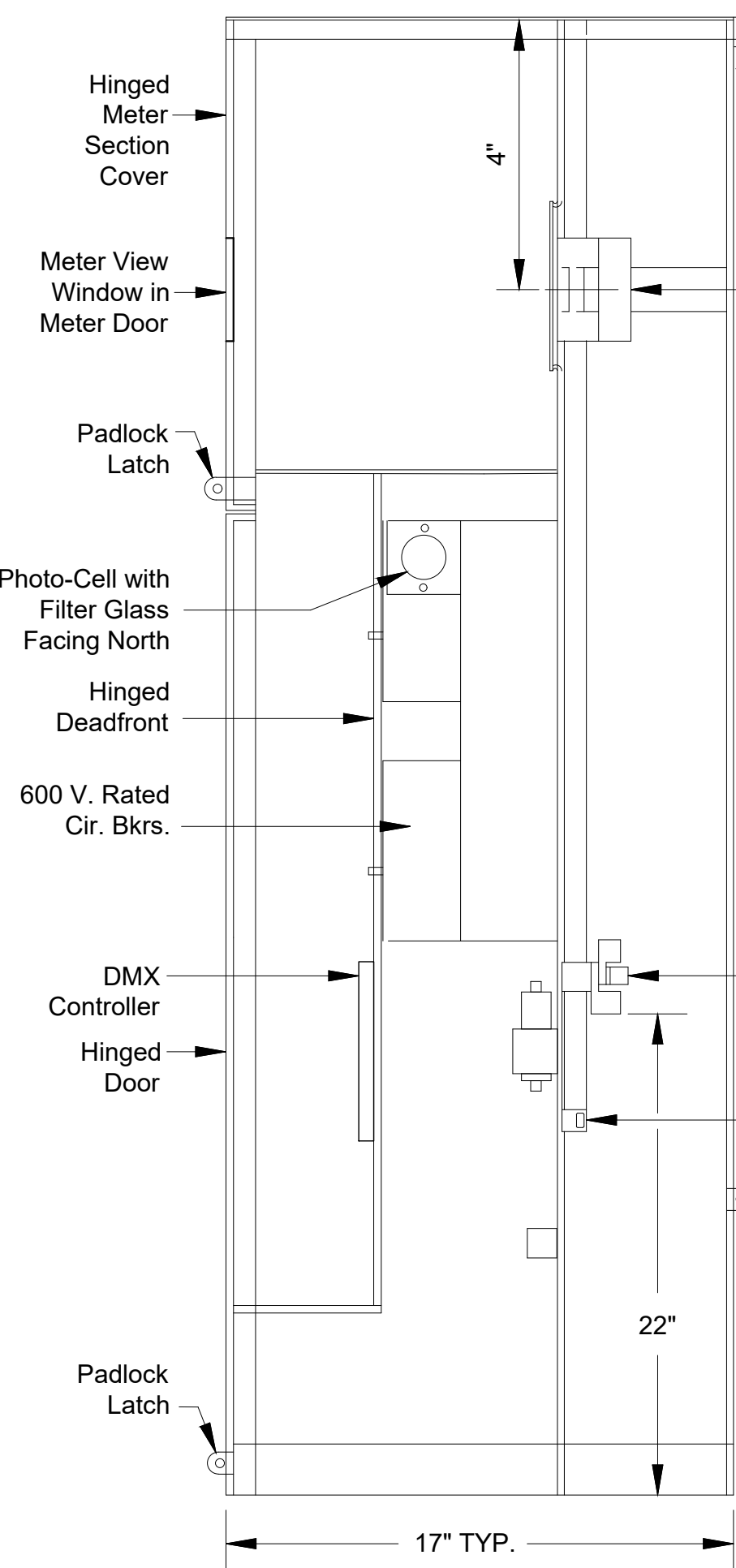


Optional Pedestal Mounting Base Set In Concrete (See Manufacturer's Specs)

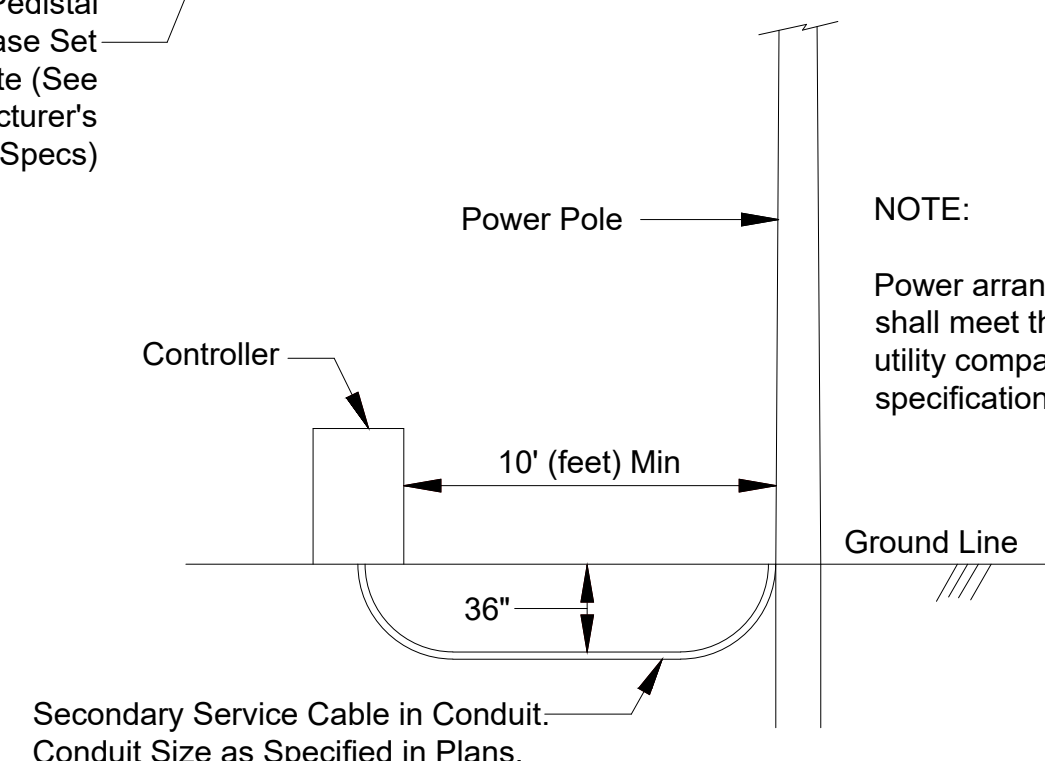
TYPICAL BREAKER DETAILS (2 POLE)



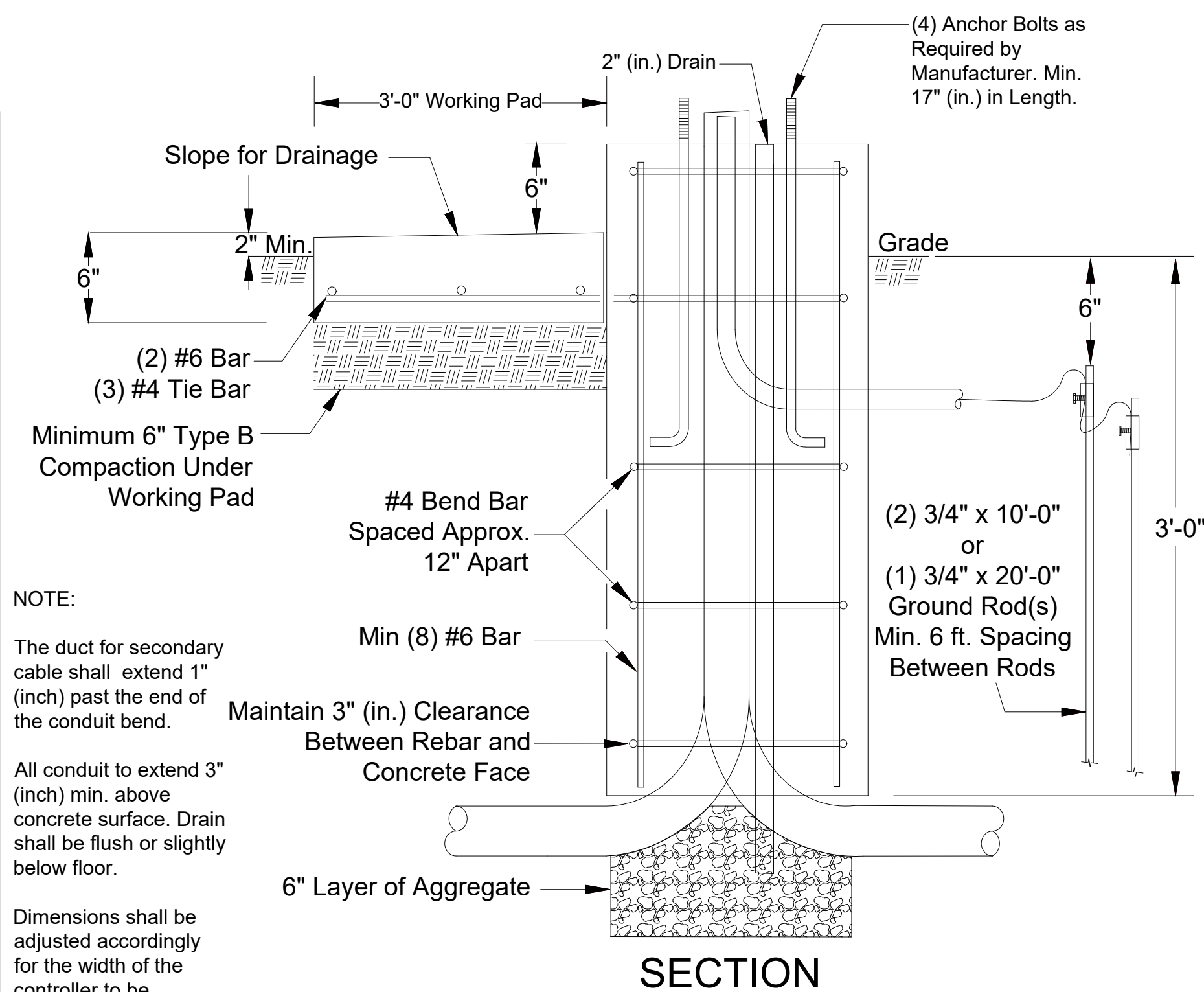
SIDE VIEW



NOTE:
Power arrangement shall meet the local utility company specifications.



POWER ARRANGEMENT

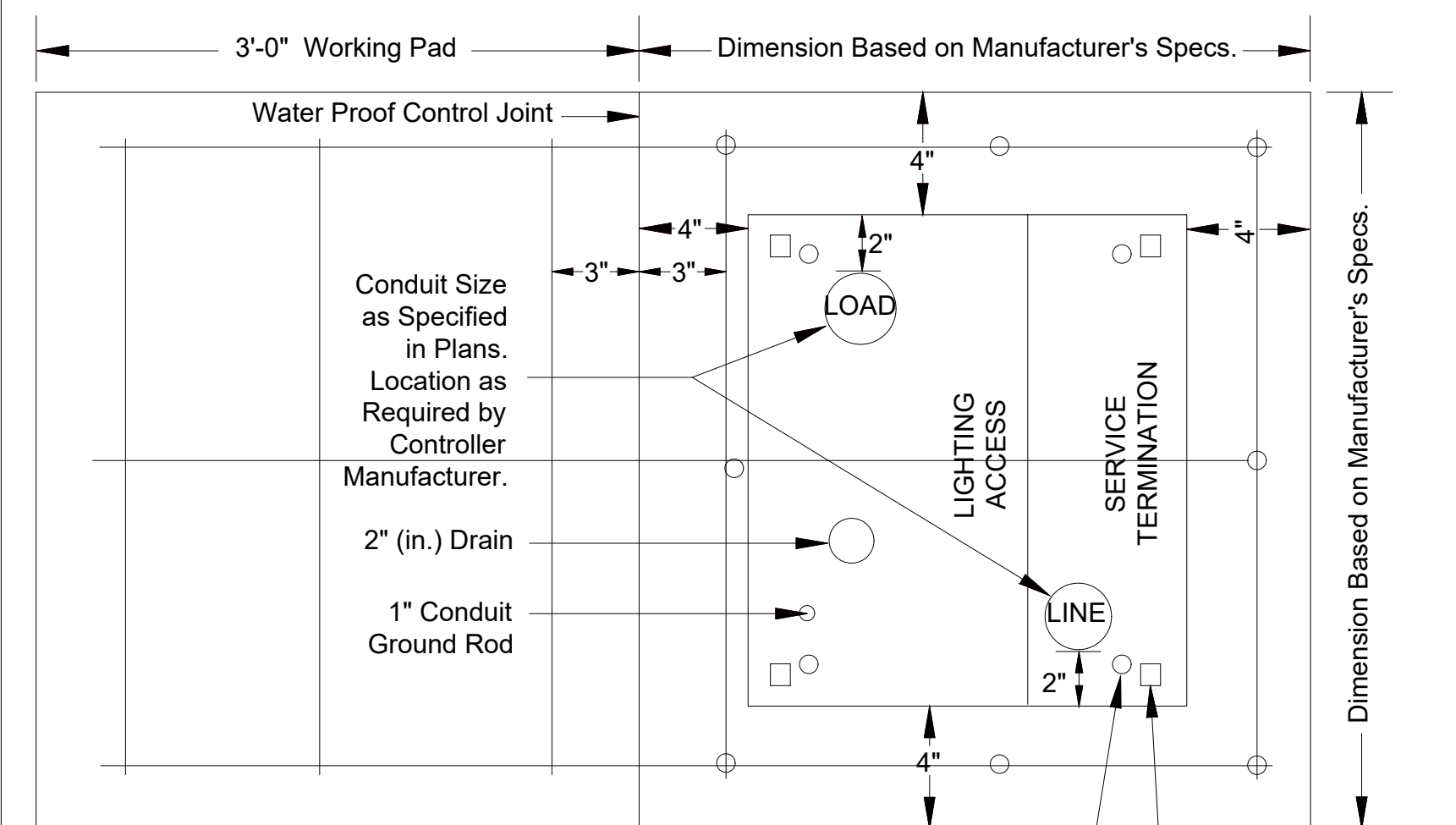


NOTE:

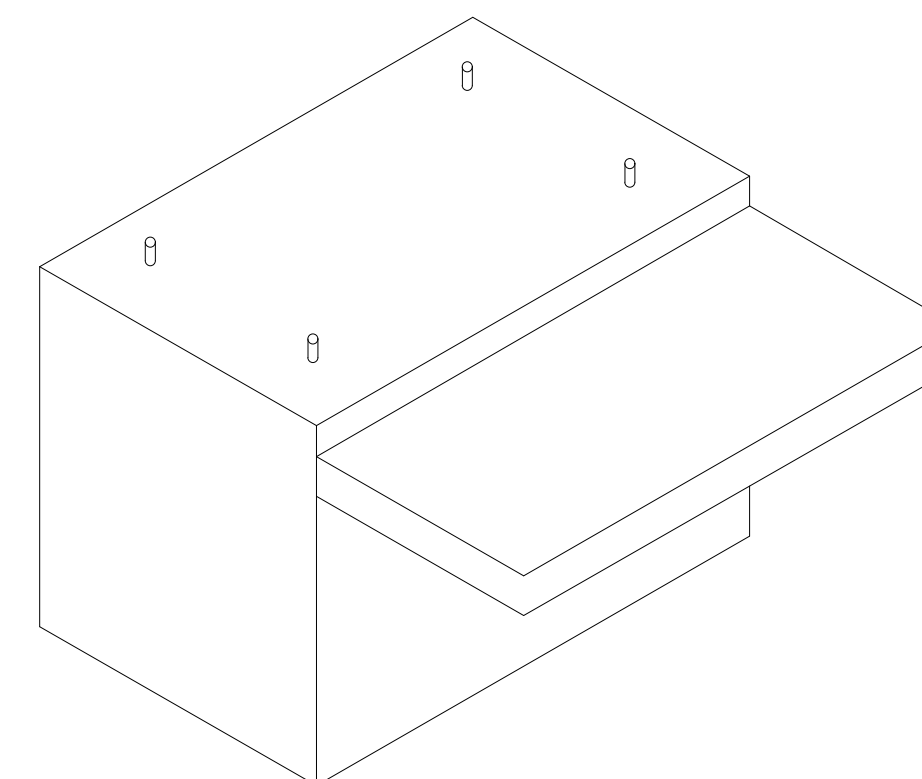
The duct for secondary cable shall extend 1" (inch) past the end of the conduit bend.

All conduit to extend 3" (inch) min. above concrete surface. Drain shall be flush or slightly below floor.

Dimensions shall be adjusted accordingly for the width of the controller to be installed.



TOP VIEW CONCRETE PAD



CONSULTANTS:

AMIDON AVE BRIDGE REPLACEMENT & ROAD IMPROVEMENTS



REVISIONS:	MARK	DATE	DESCRIPTION

PROJ NO: R210326.00
 SCALE:
 DATE: 7/13/2022
 DESIGNED BY: AJM
 DRAWN BY: AJM
 CHECKED BY: JTS

SHEET TITLE:
STREET LIGHTING PLAN