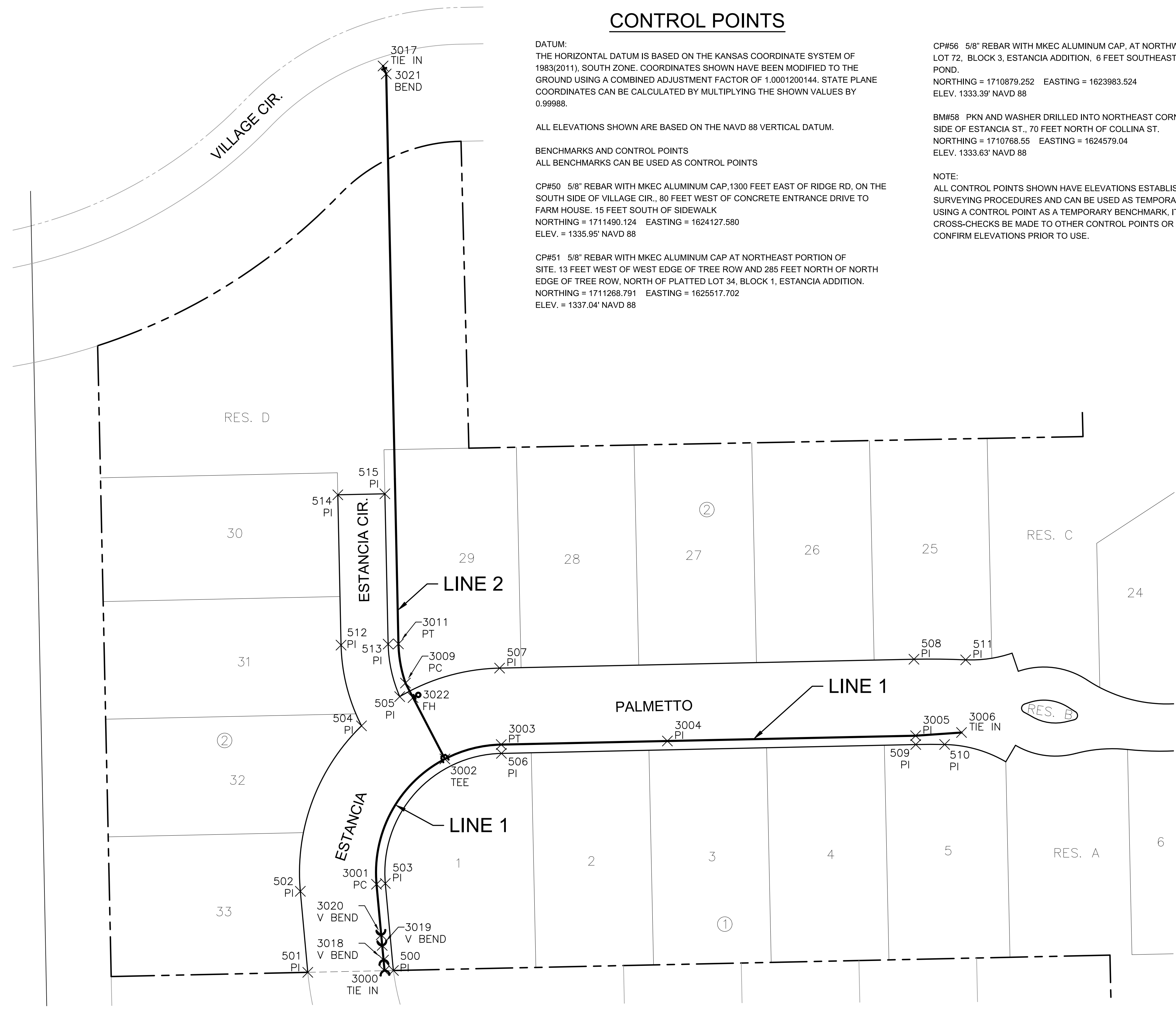


J:\PROJECTS\2019\1901010338_ESTANCIA_SECOND_18338_CAD\SHOTS\65 CIVIL\WTR\PHASE 2\18338-06-3600.DWG
 PLOTTED: Monday, August 01, 2022 @ 10:35AM



CONTROL POINTS

DATUM:
 THE HORIZONTAL DATUM IS BASED ON THE KANSAS COORDINATE SYSTEM OF 1983(2011), SOUTH ZONE. COORDINATES SHOWN HAVE BEEN MODIFIED TO THE GROUND USING A COMBINED ADJUSTMENT FACTOR OF 1.0001200144. STATE PLANE COORDINATES CAN BE CALCULATED BY MULTIPLYING THE SHOWN VALUES BY 0.99988.

ALL ELEVATIONS SHOWN ARE BASED ON THE NAVD 88 VERTICAL DATUM.

BENCHMARKS AND CONTROL POINTS
 ALL BENCHMARKS CAN BE USED AS CONTROL POINTS

CP#50 5/8" REBAR WITH MKEC ALUMINUM CAP, 1300 FEET EAST OF RIDGE RD, ON THE SOUTH SIDE OF VILLAGE CIR., 80 FEET WEST OF CONCRETE ENTRANCE DRIVE TO FARM HOUSE. 15 FEET SOUTH OF SIDEWALK
 NORTHING = 1711490.124 EASTING = 1624127.580
 ELEV. = 1335.95' NAVD 88

CP#51 5/8" REBAR WITH MKEC ALUMINUM CAP AT NORTHEAST PORTION OF SITE. 13 FEET WEST OF WEST EDGE OF TREE ROW AND 285 FEET NORTH OF NORTH EDGE OF TREE ROW, NORTH OF PLATTED LOT 34, BLOCK 1, ESTANCIA ADDITION.
 NORTHING = 1711268.791 EASTING = 1625517.702
 ELEV. = 1337.04' NAVD 88

CP#56 5/8" REBAR WITH MKEC ALUMINUM CAP, AT NORTHWEST SIDE OF LOT 72, BLOCK 3, ESTANCIA ADDITION, 6 FEET SOUTHEAST OF TOP OF BANK FOR POND.
 NORTHING = 1710879.252 EASTING = 1623983.524
 ELEV. 1333.39' NAVD 88

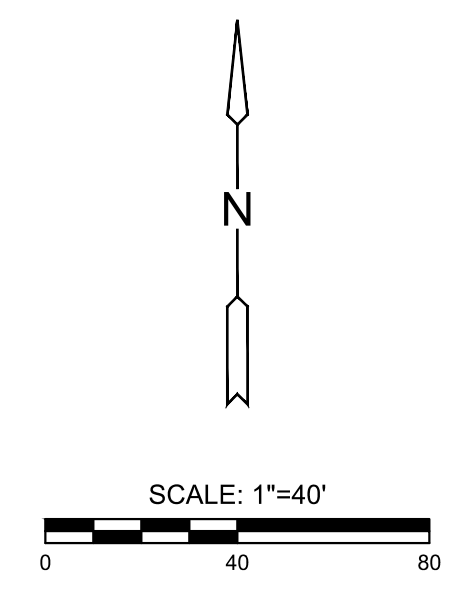
BM#58 PKN AND WASHER DRILLED INTO NORTHEAST CORNER OF CURB INLET, EAST SIDE OF ESTANCIA ST., 70 FEET NORTH OF COLLINA ST.
 NORTHING = 1710768.55 EASTING = 1624579.04
 ELEV. 1333.63' NAVD 88

NOTE:
 ALL CONTROL POINTS SHOWN HAVE ELEVATIONS ESTABLISHED USING STANDARD SURVEYING PROCEDURES AND CAN BE USED AS TEMPORARY BENCHMARKS. WHEN USING A CONTROL POINT AS A TEMPORARY BENCHMARK, IT IS RECOMMENDED THAT CROSS-CHECKS BE MADE TO OTHER CONTROL POINTS OR BENCHMARKS TO CONFIRM ELEVATIONS PRIOR TO USE.



PLAT POINTS			
Point #	Northing	Easting	Desc.
500	1710995.89	1624174.36	PI
501	1710994.65	1624116.16	PI
502	1711049.75	1624111.08	PI
503	1711055.08	1624168.84	PI
504	1711162.24	1624152.66	PI
505	1711182.10	1624178.64	PI
506	1711143.50	1624247.76	PI
507	1711201.49	1624246.52	PI
508	1711207.52	1624528.11	PI
509	1711149.54	1624529.36	PI
510	1711149.55	1624548.96	PI
511	1711207.11	1624563.27	PI
512	1711217.13	1624138.76	PI
513	1711217.82	1624170.75	PI
514	1711319.32	1624136.57	PI
515	1711320.01	1624168.56	PI

WATER POINTS			
Point #	Northing	Easting	Desc.
3000	1710995.77	1624168.33	TIE IN
3001	1711054.53	1624162.87	PC
3002	1711139.71	1624209.37	TEE
3003	1711149.50	1624247.63	PT
3004	1711151.92	1624360.55	PI
3005	1711155.53	1624529.23	PI
3006	1711157.70	1624560.43	TIE IN
3009	1711191.34	1624182.53	PC
3011	1711217.96	1624177.75	PT
3017	1711610.89	1624167.32	TIE IN
3018	1711002.98	1624167.66	V BEND
3019	1711012.93	1624166.73	V BEND
3020	1711020.15	1624166.06	V BEND
3021	1711605.41	1624169.45	BEND
3022	1711181.41	1624187.69	FH



EVERY ATTEMPT HAS BEEN MADE TO INSURE ALL COORDINATE VALUES SHOWN ARE AN ACCURATE AND TRUE REPRESENTATION OF THE CURRENT PLANS. ALL VALUES ARE TO BE CONFIRMED WITH THE FINAL SIGNED PLAN SET BEFORE USE.

WATER DISTRIBUTION PLANS FOR
ESTANCIA 2ND ADDITION
 PHASE 2

©2022
 MKEC Engineering
 All Rights Reserved
 www.mkec.com
 These drawings and their contents, including, but not limited to, all concepts, designs, & ideas are the exclusive property of MKEC Engineering (MKEC), and may not be used or reproduced in any way without the express consent of MKEC.

BUBBLE MAP

PROJECT NO.	448-2019-014835	
DATE	07/28/2022	
SCALE	1"=40'	
DESIGNED	DRAWN	CHECKED
LM	CJL	SPE
NO.	REVISION	DATE