

# STORM WATER DRAIN #241 to serve **COPPER GATE NORTH ADDITION - PHASE I** CITY OF WICHITA, KANSAS

James L. Armor, P.E. City Engineer  
Project Number  
468-83908  
O.C.A. Number  
751396

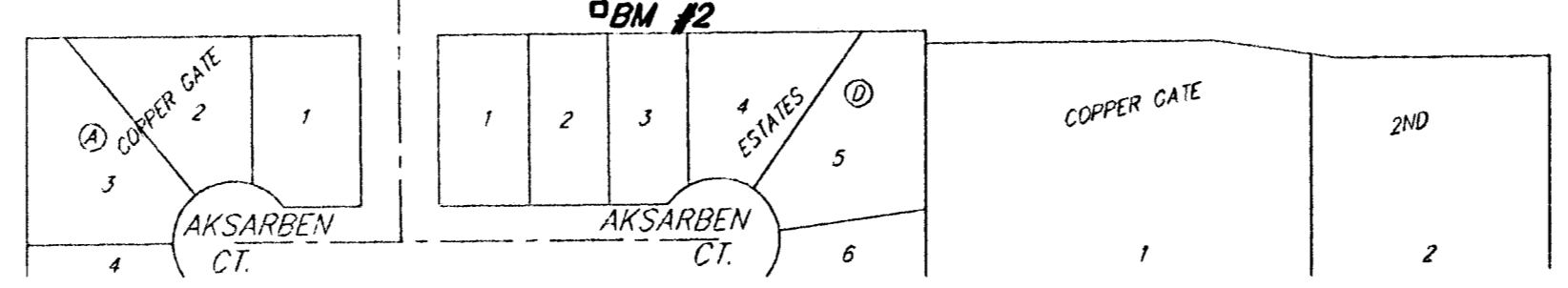
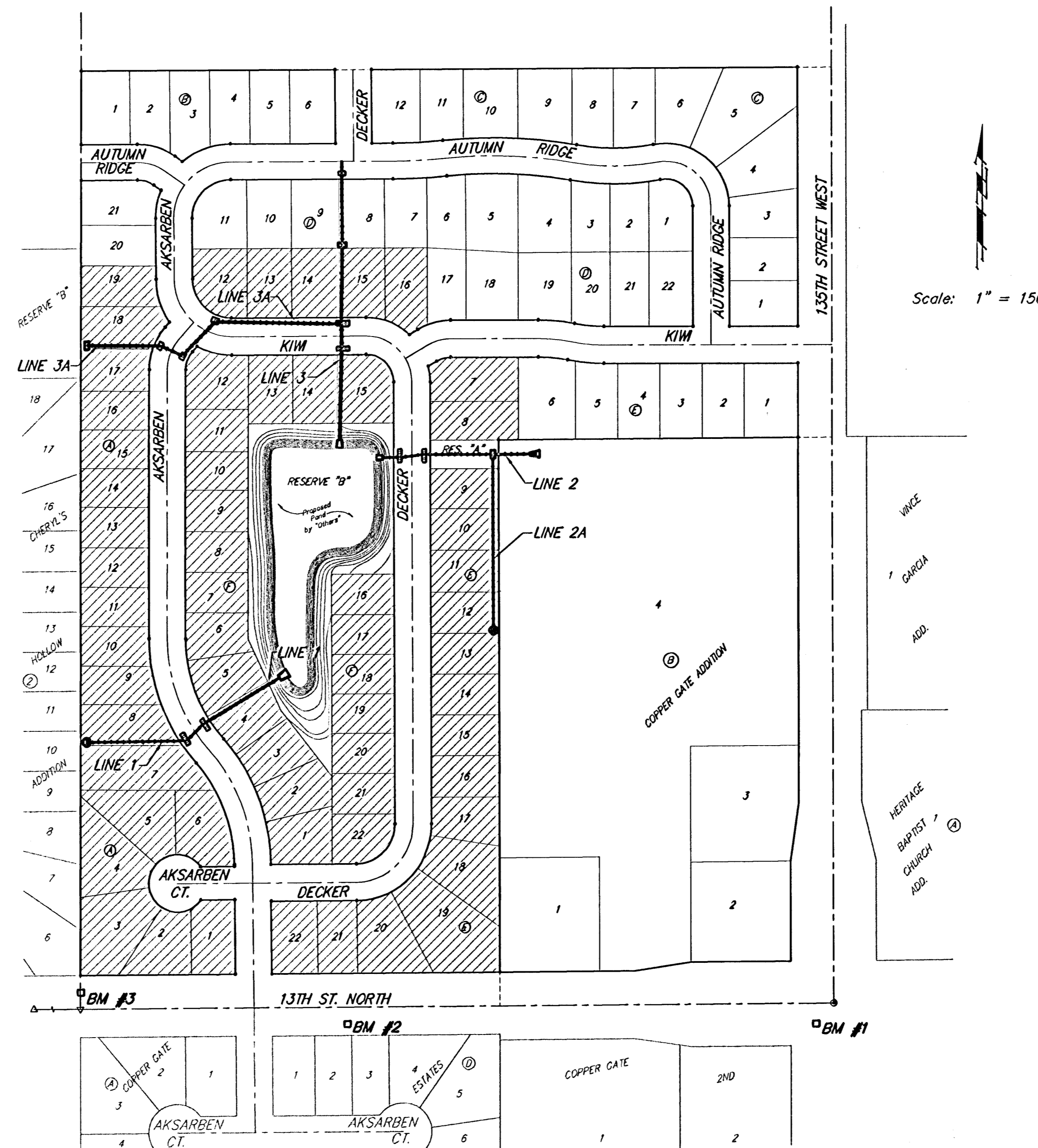
## GENERAL NOTES:

1. Contractor will be required to provide notice to utility companies a minimum of twenty-four (24) hours prior to any excavation, as follows:  
  

Kansas One-Call	687-2470
-----------------	----------

The Contractor must notify the following in case of an emergency:

Cox Communications	262-4270
Kansas Gas Service	1-888-482-4950
Westar Energy	383-8650
Aquila Energy	1-888-482-4950
SBC	268-2245
City of Wichita Water Dept.	268-4563
City of Wichita Sewer Maint.	268-4024
City of Wichita Storm Sewer Maint.	268-4030
City of Wichita Traffic Maint.	268-4034
Conoco Pipeline Co.	1-800-231-2551
Southern Star Pipeline Co.	529-6600
Phillips Pipeline Co.	1-800-766-8230
Jayhawk Pipeline Co.	1-888-542-9575
2. Underground utility service lines and overhead utility pole lines are to be adjusted as necessary by others prior to construction unless the plans specifically call for their adjustment by the Contractor or unless the plans specifically identify a utility to be adjusted by its owner during construction. Existing utilities and their location, as shown on the plans, represent the best information obtainable for design. The Contractor will be required to work around existing utilities within the right-of-way which do not conflict with proposed construction.
3. Trees and shrubs in public right-of-way which are in direct conflict with proposed new construction shall be removed by the Contractor with the Engineer's approval. Trees and shrubs which are not in direct conflict with proposed new construction shall be saved and protected from damage.
4. The Contractor shall give all property owners and/or tenants of developed property abutting the construction of this project a minimum of ten (10) days advance notice prior to start of construction.
5. The Contractor shall be responsible for preserving property irons. The Contractor will be required to re-establish any property irons which are damaged or destroyed by his construction operations. Such irons shall be re-established by a licensed land surveyor in accordance with state laws.
6. All excavation & trenching material shall be stockpiled or spread out on site as determined by the Engineer.
7. All existing and proposed erosion control measures including silt fencing, erosion control mat, straw bales, inlet barriers, and const. entrance shall be maintained throughout construction by the contractor and until project is accepted by the City of Wichita. The on-site engineer shall complete weekly reports on the status of erosion control measures. The contractor shall be required to comply with maintenance and/or replacement of erosion control measures as determined by the on-site engineer until project is accepted by City of Wichita. Maintenance and/or replacement of erosion control measures to be paid by L.S. bid item "Site Clearing & Restoration"
8. All areas disturbed during construction shall be seeded at 300 lbs./acre with Rye Grass immediately following construction in that area. Contractor shall prepare ground per City Specifications.
9. The developer of this project is Paul E. Kelsey, and may be reached at (316) 722-1077



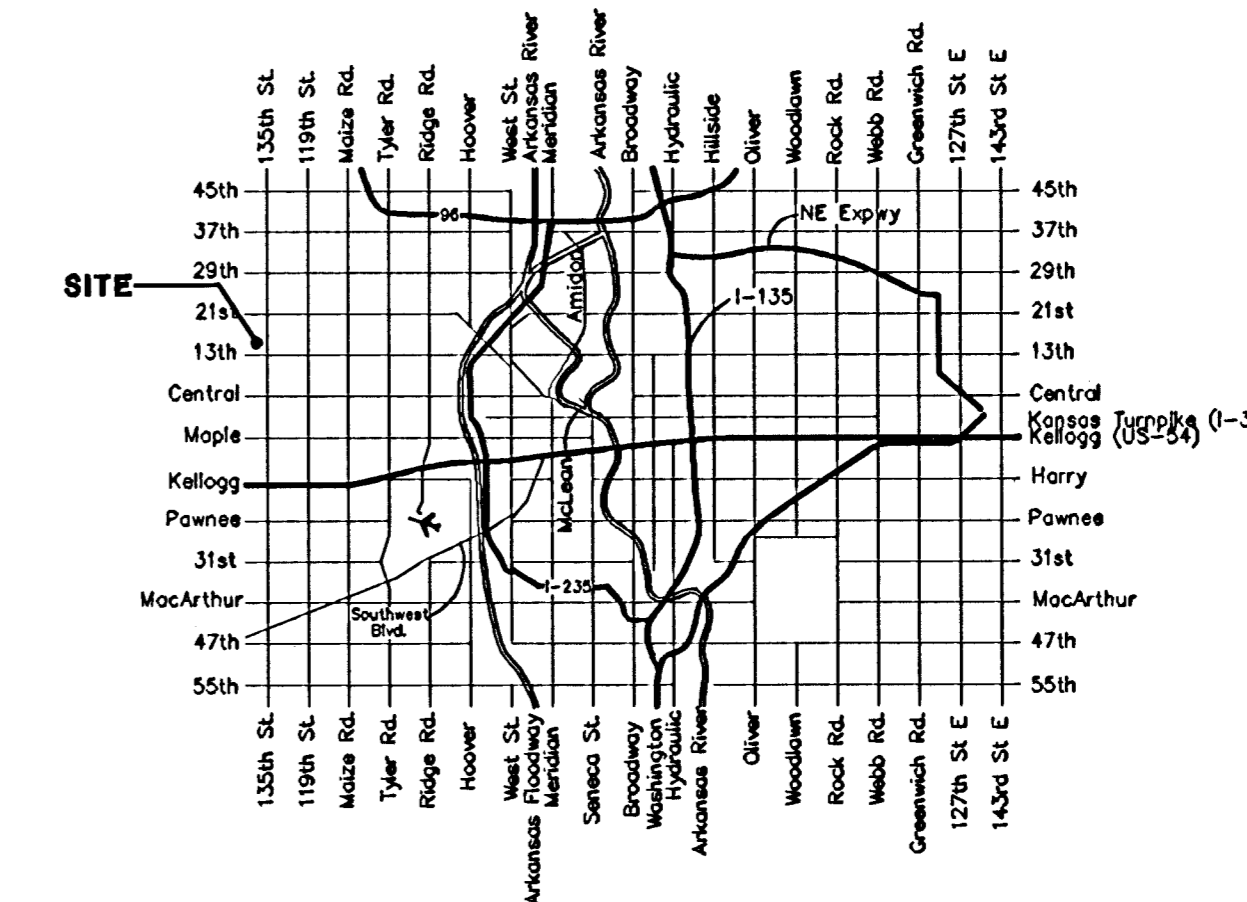
Benefit District

## Sheet Index

Title Sheet	1
Line 1	2
Line 2	3
Line 2A	4
Line 3	5
Line 3A	6
Std. Type 1A Single Inlet Detail	7
Std. Type 1A Double Inlet Detail	8
Special Yard Inlet Detail	9
Standard Drop Inlet Detail	10
Headwall Detail	11
Erosion Control Plan	12
Erosion Control Details	13-16
Copy of Plat	17

## Benchmarks

- BM #1: C.O.W. disc at SW corner of intersection.  
30.00'± S. of CL of 13th St. N.  
35.00'± W. of CL of 135th St. W.  
Elev. = 168.25 City Datum
- BM #2: Small RR spike in 4th HLP  
W. of 135th St. W. on south side of 13th St. N. (N. face of HLP).  
Elev. = 179.24 City Datum
- BM #3: RR spike in Power Pole.  
1321.65 W. of 135th St. W.  
30' N. of 13th St. N.  
Elev. = 178.45 City Datum



## Vicinity Map



	Baughman Company, P.A. 315 Ellis St. Wichita, KS 67211 P 316-262-7271 F 316-262-0141 ENGINEERING   SURVEYING   PLANNING   LANDSCAPE ARCHITECTURE
--	-----------------------------------------------------------------------------------------------------------------------------------------------------