

BENCHMARKS:

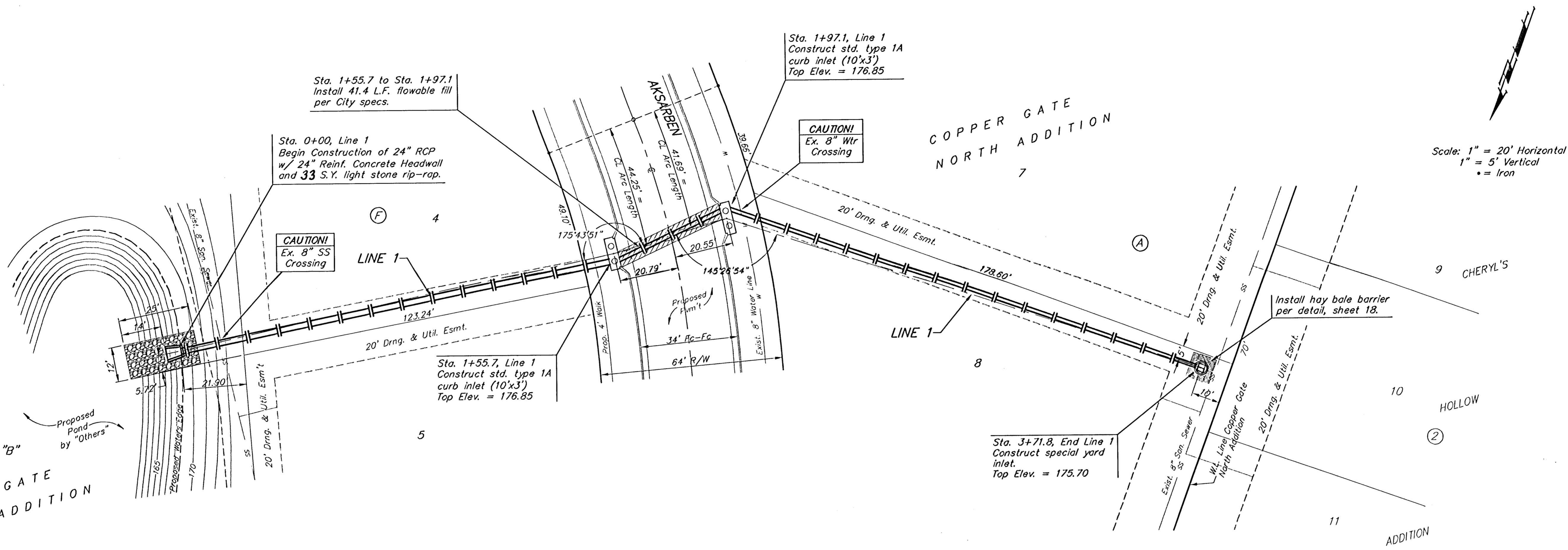
BM #1: C.O.W. disc at SW corner of intersection.
 30.00'± S. of CL of 13th St. N.
 35.00'± W. of CL of 135th St. W.
 Elev. = 168.25 City Datum

BM #2: Small RR spike in 4th HLP
 W. of 135th St. W. on south side
 of 13th St. N. (N. face of HLP).
 Elev. = 179.24 City Datum

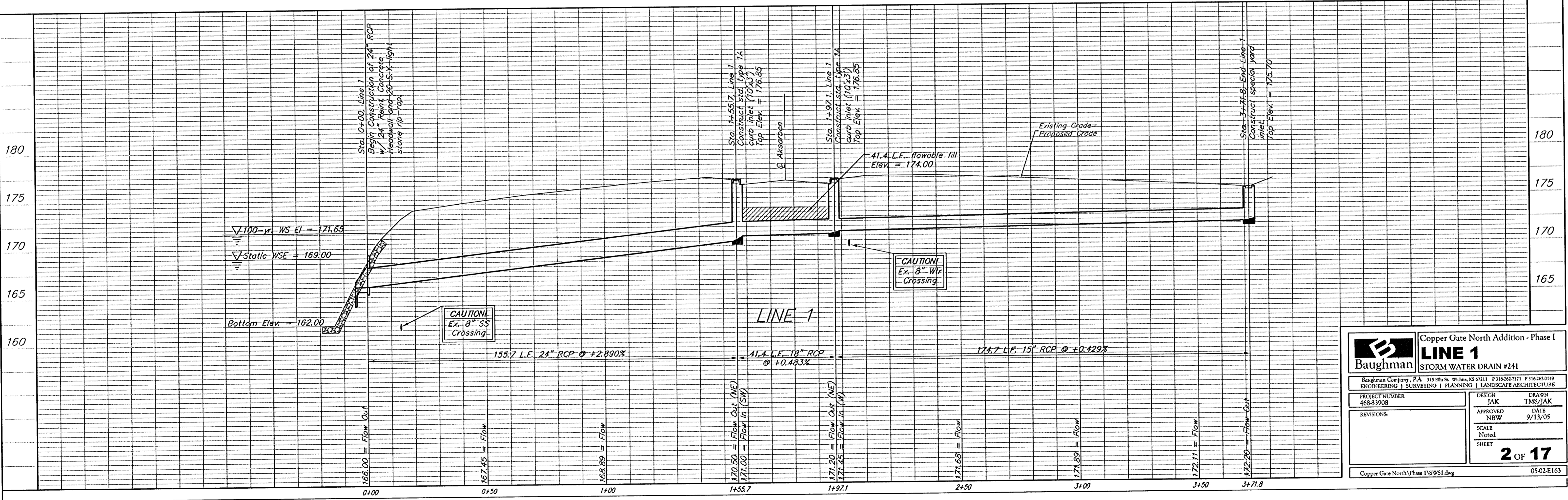
BM #3: RR spike in Power Pole.
 1321.65 W. of 135th St. W.
 30' N. of 13th St. N.
 Elev. = 178.45 City Datum

Detention Pond
 Static WS El = 169.00
 100-yr. WS El = 171.65

RESERVE "B"
 COPPER GATE
 NORTH ADDITION



Scale: 1" = 20' Horizontal
 1" = 5' Vertical
 • = Iron



Baughman		Copper Gate North Addition - Phase I	
LINE 1		STORM WATER DRAIN #241	
Baughman Company, P.A. 315 Ellis St. Wichita, KS 67211 P 316-263-7211 F 316-263-0149 ENGINEERING SURVEYING PLANNING LANDSCAPE ARCHITECTURE			
PROJECT NUMBER 468-83908	DESIGN JAK	DRAWN TMS/JAK	
REVISIONS:	APPROVED NBW	DATE 9/13/05	
	SCALE Noted	SHEET	
			2 OF 17
Copper Gate North Phase I SWSI.dwg			0502-E163