

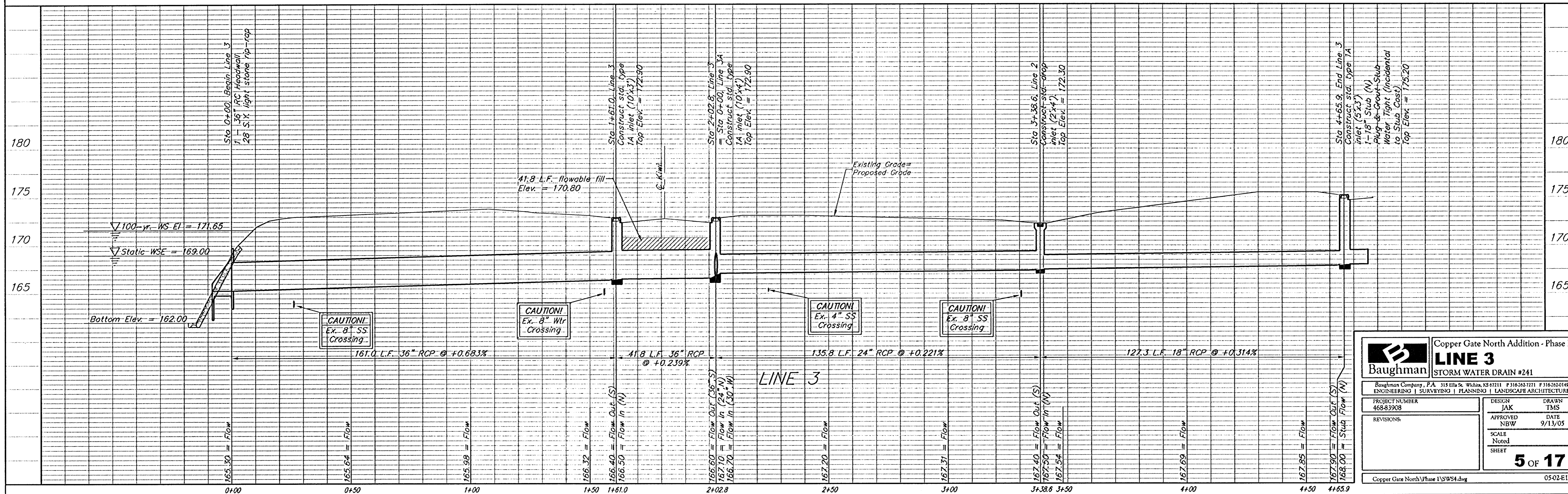
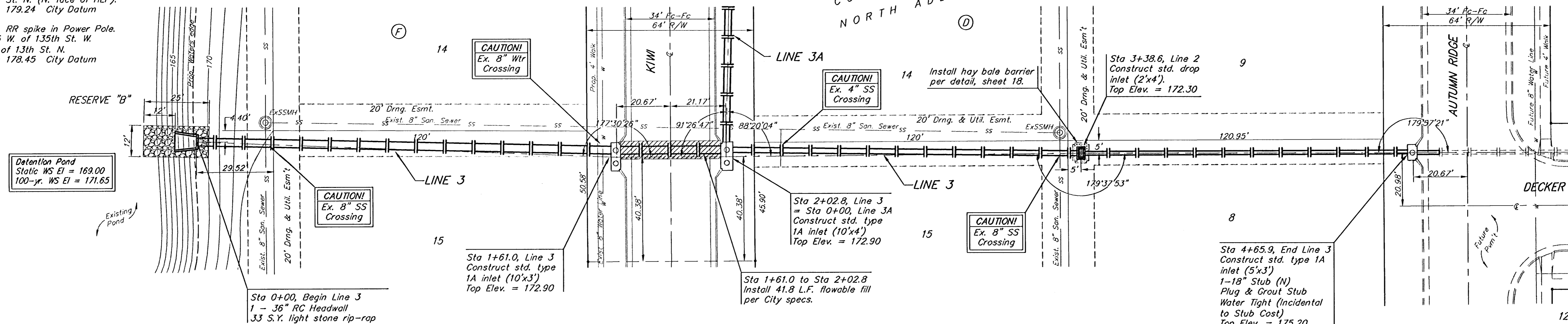
BENCHMARKS:

BM #1: C.O.W. disc at SW corner of intersection.
30.00'± S. of CL of 13th St. N.
35.00'± W. of CL of 135th St. W.
Elev. = 168.25 City Datum

BM #2: Small RR spike in 4th HLP
W. of 135th St. W. on south side of 13th St. N. (N. face of HLP).
Elev. = 179.24 City Datum

BM #3: RR spike in Power Pole.
1321.65 W. of 135th St. W.
30' N. of 13th St. N.
Elev. = 178.45 City Datum

Scale: 1" = 20' Horizontal
1" = 5' Vertical
• = Iron



Baughman Copper Gate North Addition - Phase I
LINE 3
STORM WATER DRAIN #241

Baughman Company, P.A. 315 Ellis St. W. Salem, MS 37111 F 1465427211 F 1465427219
ENGINEERING | SURVEYING | PLANNING | LANDSCAPE ARCHITECTURE

PROJECT NUMBER 468-83908	DESIGN JAK	DRAWN TMS
REVISIONS	APPROVED NBW	DATE 9/13/05
SCALE Noted		SHEET 5 OF 17

Copper Gate North\Phase I\SW4.dwg 0502E163