

GENERAL NOTES

- THE CONTRACTOR SHALL COMPLY WITH ALL APPLICABLE SAFETY REGULATIONS. ALL CONSTRUCTION SHALL BE COMPLETED FOLLOWING CURRENT CITY STANDARD SPECIFICATIONS AND SPECIAL PROVISIONS.
- CONTRACTOR WILL BE REQUIRED TO PROVIDE NOTICE TO UTILITY COMPANIES A MINIMUM OF SEVENTY-TWO (72) HOURS PRIOR TO ANY EXCAVATION, AS FOLLOWS:

KANSAS ONE-CALL 687-2470

THE CONTRACTOR MUST NOTIFY THE FOLLOWING IN CASE OF AN EMERGENCY:

AT&T	1-800-246-8464
BLACK HILLS ENERGY (GAS)	1-800-694-8989
CITY OF WICHITA WATER & SEWER	1-316-219-8921
CITY OF WICHITA STORMWATER	1-316-268-4090
CITY OF WICHITA TRAFFIC	1-316-268-4034
COX COMMUNICATIONS	1-888-249-3330
KANSAS GAS SERVICE	1-888-482-4950
EVERGY	1-800-544-4857

- UTILITY SERVICE LINES, POLES, ETC. ARE TO BE ADJUSTED AS NECESSARY BY OTHERS PRIOR TO CONSTRUCTION UNLESS THE PLANS SPECIFICALLY CALL FOR THEIR ADJUSTMENT BY THE CONTRACTOR OR UNLESS THE PLANS SPECIFICALLY IDENTIFY A UTILITY TO BE ADJUSTED BY ITS OWNER DURING CONSTRUCTION. EXISTING UTILITIES AND THEIR LOCATION, AS SHOWN ON THE PLANS, REPRESENT THE BEST INFORMATION OBTAINABLE FOR DESIGN. THE CONTRACTOR WILL BE REQUIRED TO WORK AROUND EXISTING UTILITIES WITHIN THE RIGHT-OF-WAY WHICH DO NOT CONFLICT WITH PROPOSED CONSTRUCTION.

- RUBBLE FROM THE REMOVAL OF MISCELLANEOUS STRUCTURES AND EXCESS EXCAVATION WHICH IS TO BE WASTED SHALL BE PROVIDED BY THE CONTRACTOR. THESE SITES SHALL BE APPROVED BY THE ENGINEER AS TO SUITABILITY, APPEARANCE AND SITE LOCATION LOCATIONS. IN THE OPINION OF THE ENGINEER, THAT WILL LEAVE AN UNSIGHTLY APPEARANCE WILL NOT BE APPROVED. ALL DISPOSAL SITES MUST BE APPROVED BY THE KANSAS DEPARTMENT OF HEALTH AND ENVIRONMENT. MATERIAL EITHER STOCKPILED OR DISPOSED OF IN A FLOOD PLAIN WILL REQUIRE A KANSAS STATE BOARD OF AGRICULTURE PERMIT. ANY MATERIAL DUMPED IN WATERS OF THE UNITED STATES OR WETLANDS IS SUBJECT TO U.S. CORPS OF ENGINEERS PERMITTING REGULATIONS. ANY MATERIAL BURIED OR STOCKPILED BEYOND APPROVED CONSTRUCTION LIMITS WILL REQUIRE ADDITIONAL ARCHAEOLOGICAL INVESTIGATIONS UNLESS BURIED IN A PREVIOUSLY APPROVED BORROW LOCATION.

- TREES AND SHRUBS IN PUBLIC RIGHT-OF-WAY WHICH ARE IN DIRECT CONFLICT WITH PROPOSED NEW CONSTRUCTION SHALL BE REMOVED BY THE CONTRACTOR WITH THE CITY ENGINEER'S APPROVAL. TREES AND SHRUBS WHICH ARE NOT IN DIRECT CONFLICT WITH PROPOSED NEW CONSTRUCTION SHALL BE SAVED AND PROTECTED FROM DAMAGE.

- THE CONTRACTOR SHALL GIVE ALL PROPERTY OWNERS AND/OR TENANTS OF DEVELOPED PROPERTY ABUTTING THE CONSTRUCTION OF THIS PROJECT A MINIMUM OF TEN (10) DAYS NOTICE PRIOR TO START OF CONSTRUCTION.

- THE CONTRACTOR SHALL BE RESPONSIBLE FOR PRESERVING PROPERTY IRONS. THE CONTRACTOR WILL BE REQUIRED TO RE-ESTABLISH ANY PROPERTY IRONS WHICH ARE DAMAGED OR DESTROYED BY HIS CONSTRUCTION OPERATIONS. SUCH IRONS SHALL BE RE-ESTABLISHED BY A LICENSED LAND SURVEYOR IN ACCORDANCE WITH STATE LAWS.

- THE ENGINEERING DIVISION SHALL FIELD LOCATE WATER VALVES ONE TIME DURING CONSTRUCTION WHEN REQUESTED BY THE CONTRACTOR. IT SHALL BE THE CONTRACTOR'S RESPONSIBILITY TO PRESERVE SUCH FIELD LOCATIONS DURING THE CONSTRUCTION PROCESS. WATER VALVES, VALVE BOXES OR FIRE HYDRANTS DAMAGED DURING CONSTRUCTION SHALL BE REPAIRED BY CONTRACTOR AT HIS OWN EXPENSE. VALVE BOXES AND WATER METERS WITHIN THE PROJECT LIMITS SHALL BE ADJUSTED TO MATCH FIELD GRADES BY THE CONTRACTOR.

- IF TRAFFIC WILL BE IMPACTED BY CONSTRUCTION, A TRAFFIC CONTROL PLAN MUST BE SUBMITTED AND APPROVED BY THE CITY TRAFFIC ENGINEER AT traffic@wichita.gov BEFORE CONSTRUCTION CAN BEGIN. THE CONTRACTOR SHALL BE RESPONSIBLE FOR ALL TRAFFIC CONTROL MEASURES TO FACILITATE CONSTRUCTION. ALL CONSTRUCTION ZONE MARKINGS AND SIGNAGE SHALL CONFORM TO THE LATEST VERSION OF THE MANUAL ON UNIFORM TRAFFIC CONTROL DEVICES (MUTCD) AS PUBLISHED BY THE US DEPT. OF TRANSPORTATION, FEDERAL HIGHWAY ADMINISTRATION. ALL COSTS ASSOCIATED WITH CONSTRUCTION MARKINGS AND SIGNAGE SHALL BE THE CONTRACTOR'S RESPONSIBILITY.

- ALL AREAS DISTURBED DURING CONSTRUCTION THAT WILL NOT BE UNDER PROPOSED PAVEMENT SHALL BE SEEDED AND MULCHED. COST SHALL BE CONSIDERED SUBSIDIARY TO PROJECT SEEDING.

- CONTRACTOR SHALL LIMIT THE EXTENT OF TRENCH OPEN OVERNIGHT AND WEEKENDS TO LESS THAN 50 FEET.

- EXISTING UTILITIES AND THEIR LOCATION, AS SHOWN ON THE PLANS REPRESENT THE BEST INFORMATION OBTAINABLE FOR DESIGN. LOCATION INFORMATION HAS BEEN OBTAINED FROM THE VARIOUS COMPANIES AND IS EITHER FROM COMPANY UTILITY DRAWINGS OR COMPANY PROVIDED FIELD LOCATIONS. THE PLAN LOCATIONS SHOWN ARE NOT GUARANTEED. ADDITIONAL EXISTING UTILITIES MAY ALSO BE ENCOUNTERED.

- A PORTION OF EXCESS EXCAVATED MATERIAL SHALL BE MOUNDED AROUND MANHOLES WHICH EXTEND MORE THAN ONE (1) FOOT ABOVE THE EXISTING GROUND. SUCH MOUND SHALL BE CONSTRUCTED WITH NEW DEVELOPMENT A SIX (6) FOOT DIAMETER FLAT TOP WITH 4 TO 1 SIDE SLOPES DOWN TO THE ORIGINAL GROUND. THE ELEVATION OF THE FLAT TOP OF THE MOUND SHALL BE 0.4 FOOT BELOW THE TOP OF THE MANHOLE.

- CONTRACTOR SHALL PROVIDE POSITIVE DRAINAGE AWAY FROM ALL MANHOLE COVERS.

- ALL STUBS AND PLUGGED PIPES SHALL BE LOCATED WITH GREEN PLASTIC TAPE IN THE SAME MANNER AS RISERS.

- CONNECTING TO EXISTING MANHOLES: PRIOR TO LAYING SEWER LINES USING EXISTING STUBS IN EXISTING MANHOLES, THE CONTRACTOR SHALL EXPOSE AND VERIFY THE ELEVATION, GRADE AND ALIGNMENT OF EXISTING STUBS AND NOTIFY THE ENGINEER OF ANY DEVIATION FROM THE PLANS. WHERE CONNECTION TO AN EXISTING MANHOLE THAT DOES NOT HAVE AN EXISTING STUB OR THE STUB IS UNUSABLE DUE TO ELEVATION GRADE OR ALIGNMENT, THE CONTRACTOR SHALL BORE CUT INTO EXISTING MANHOLE WALL TO MAKE CONNECTION USING APPROVED WATER STOP GASKET, AND RESHAPE THE EXISTING MANHOLE INVERT TO PROVIDE SMOOTH FLOW. THE COST TO CONNECTING TO EXISTING MANHOLES IS INCIDENTAL TO THE PROJECT.

- THE CONTRACTOR SHALL PREVENT ANY CONSTRUCTION DEBRIS FROM ENTERING THE EXISTING SANITARY SEWER DURING CONSTRUCTION.

- THE CONTRACTOR SHALL BE RESPONSIBLE FOR MAINTAINING CONTINUOUS FLOW OF SEWAGE THROUGH CONSTRUCTION. CONTRACTOR'S PROPOSED METHOD FOR MAINTAINING SEWAGE FLOW SHALL BE SUBMITTED AND APPROVED BY THE SEWER MAINTENANCE DIVISION (316-268-4073) PRIOR TO STARTING AND BY-PASSING OF SEWAGE FLOWS.

- ALL TRAFFIC CONTROL DEVICES IN THE WORK ZONE (INCLUDING MARKINGS AND SIGNS) AND THEIR INSTALLATION AND MAINTENANCE SHALL COMPLY WITH THE LATEST EDITION OF THE MANUAL ON UNIFORM TRAFFIC CONTROL DEVICES (MUTCD). ALL TRAFFIC CONTROL DEVICES IN THE TRAVELED WAY OR CLEAR ZONE SHALL BE CRASHWORTHY (NCHRP REPORT 350 OR MASH COMPLIANT). <http://safety.fhwa.dot.gov/roadwaydept/policy/guide/roadhardware/wlzd>

- ALL CONSTRUCTION EQUIPMENT, INCLUDING VEHICLES, MATERIALS, AND DEBRIS, SHALL BE STORED OUTSIDE OF THE CLEAR ZONE. WHERE THIS CANNOT BE ACHIEVED THE CONTRACTOR SHALL PLACE APPROPRIATE SIGNS, SUBJECT IDENTIFIERS, AND/OR BARRICADES IN COMPLIANCE WITH MUTCD.

- EXCEPT WHEN REQUIRED FOR SAFETY, TRAFFIC CONTROL SHALL NOT BLOCK ANY LANES OR SIDEWALKS WHEN WORK IS NOT BEING PERFORMED.

- FOLLOW THE LINK BELOW FOR DETAILS ON SPECIFIC CITY OF WICHITA STANDARD DETAILS: <http://www.wichita.gov/PWU/Regulations.aspx>

- DEVELOPER FOR THIS PROJECT IS:
TWENTY-FIRST GROWTH, LLC
8415 E 21ST ST. N STE 100
WICHITA, KS. 67206
TIM BUCHANAN
316.616.6288

SANITARY SEWER

TO SERVE

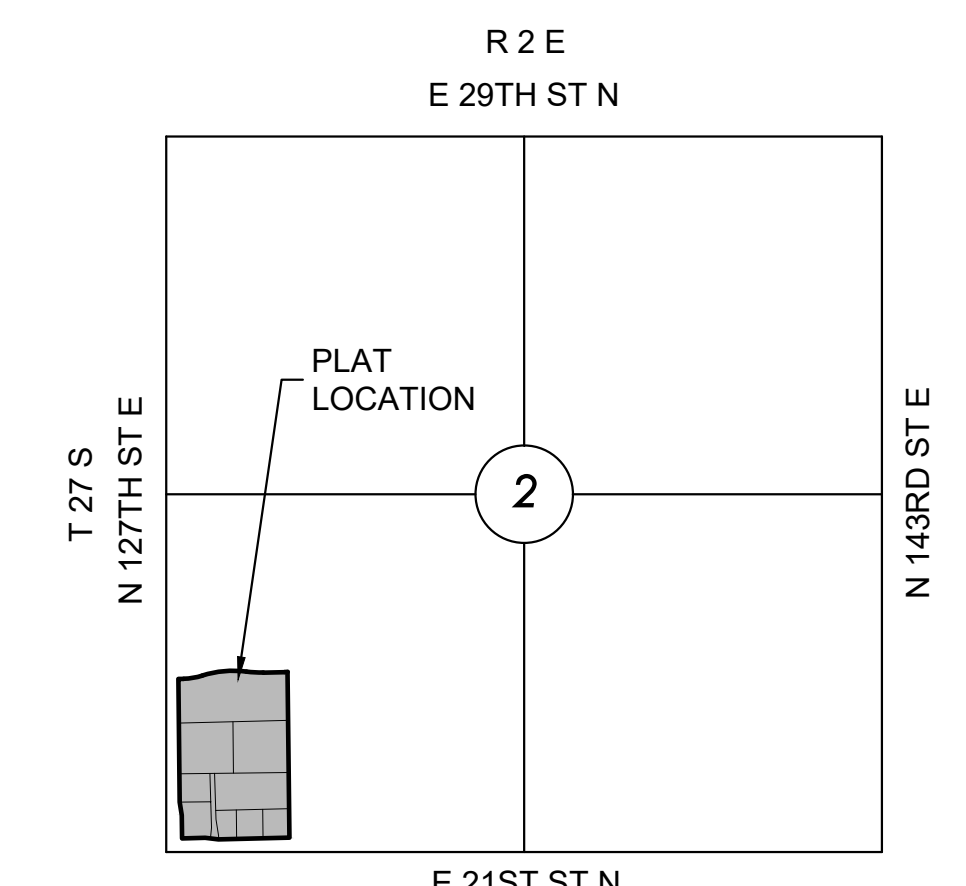
HAWTHORNE ADDITION

PROJECT NO. 468-2022-007724

THE CITY OF WICHITA, KANSAS
GARY JANZEN, P.E. - CITY ENGINEER

ORG CODE 47265722

MUNIS NO. E2037



VICINITY MAP

No Scale

INDEX TO DRAWINGS

SHEET NO.	DESCRIPTION
01	TITLE SHEET
02-04	DETAILS
05	LINE 1
06	BUBBLE MAP
07-11	BMP DETAILS

BENCHMARKS

CP 37
N: 1699943.851 E: 1691586.743 ELEV.=1384.67
5/8" by 24" Rebar with MKEC CLS39 cap

CP 28
N: 1700218.885 E: 1691568.632 ELEV.=1383.42
5/8" by 24" Rebar

BM
N: 1700946.966 E: 1691209.341 ELEV.=1378.83
SQ Cut front center curb inlet on south side entrance to The Enclave subdivision. Intersection of 127th St E and 127th St Ct.

All Control Points shown have elevations established using standard surveying procedures and can be used as temporary benchmarks. When using a Control point as a temporary benchmark, it is recommended that cross-checks be made to other control points or benchmarks to confirm elevations prior to use.

NOTE

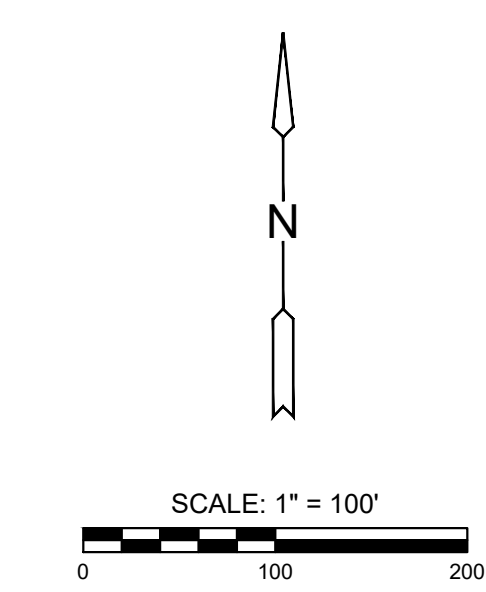
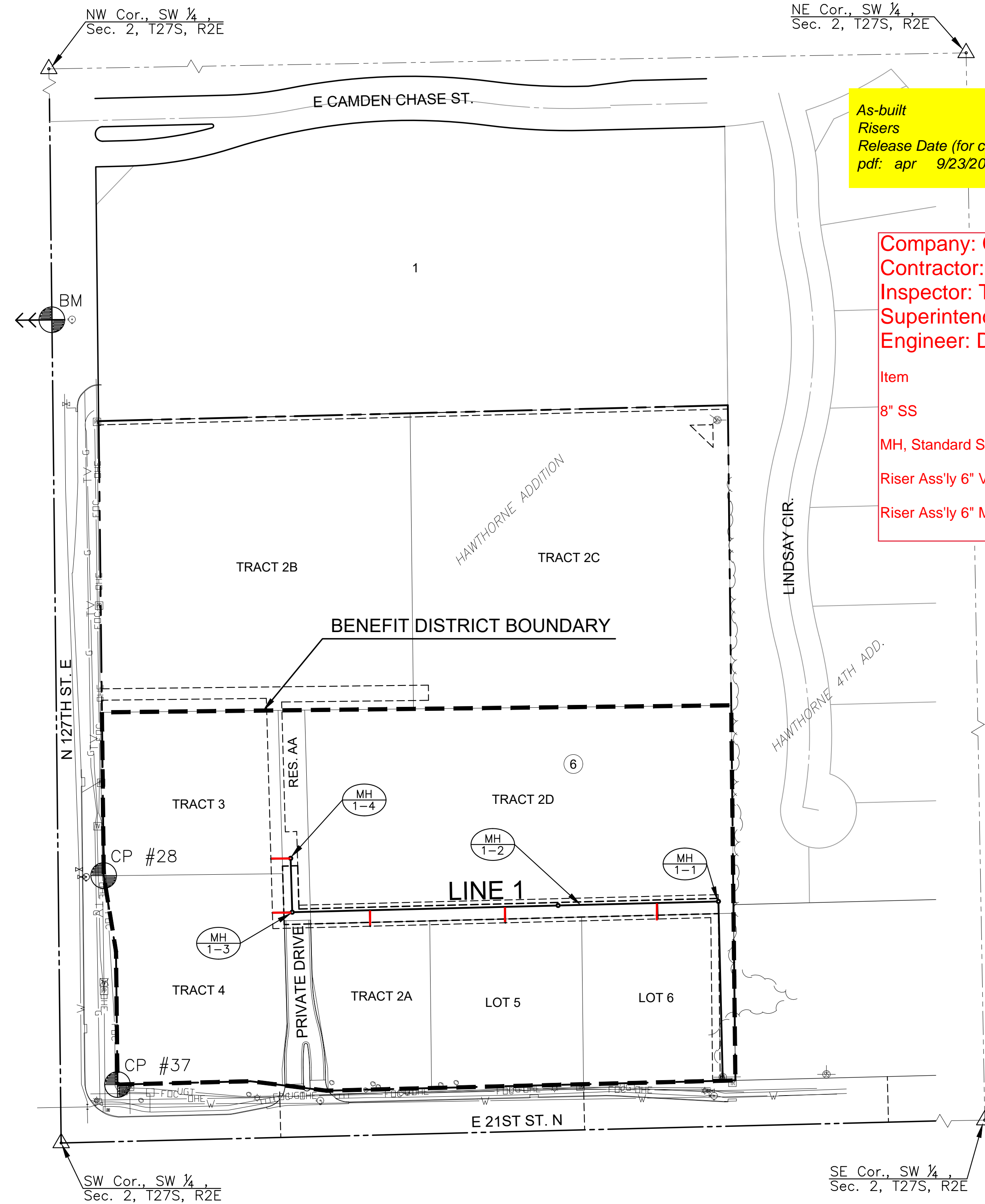
The Horizontal Datum is based on the Kansas Coordinate System of 1983, NAD83(2011), EPOCH:2010.0000, South Zone. Coordinates shown have been modified to the ground using a combined adjustment factor of 1.0001200144. State Plane coordinates can be calculated by multiplying the shown values by 0.99988.

All elevations shown are based on the NAVD 88 vertical datum, Geoid18

As-built
Risers
Release Date (for connection purposes only): 9/22/2022
pdf: apr 9/23/2022

Company: City of Wichita
Contractor: McCullough Excavation
Inspector: Taylor Creighton
Superintendent: Rob Gray
Engineer: Dayen Gierhart

Item	Type	Quantity
8" SS	C-900	864 lf
MH, Standard SS		4 ea
Riser Ass'ly 6" Vert.		3 ea
Riser Ass'ly 6" MH Stub		2 ea



PUBLIC SANITARY SEWER PLANS FOR
HAWTHORNE ADDITION
WICHITA, KANSAS

©2022
MKEC Engineering
All Rights Reserved
www.mkec.com
These drawings and their contents, including, but not limited to, all concepts, designs, & ideas are the exclusive property of MKEC Engineering (MKEC), and may not be used or reproduced in any way without the express consent of MKEC.

TITLE SHEET

PROJECT NO.	468-2022-007724	
DATE	03/25/2022	
SCALE	1"=100'	
DESIGNED	DRAWN	CHECKED
LM	CJL	SPE
NO.	REVISION	DATE

SHEET NO.

J:\PROJECTS\2022\2010101016_TWENTYFIRST_HAWTHORNE DEVELOPMENT\00_22016 CAD\SHS\05 CIVIL\SANITARY\2016-05-20\00.DWG PLOTTED: Friday, April 23, 2022 9:04:25AM

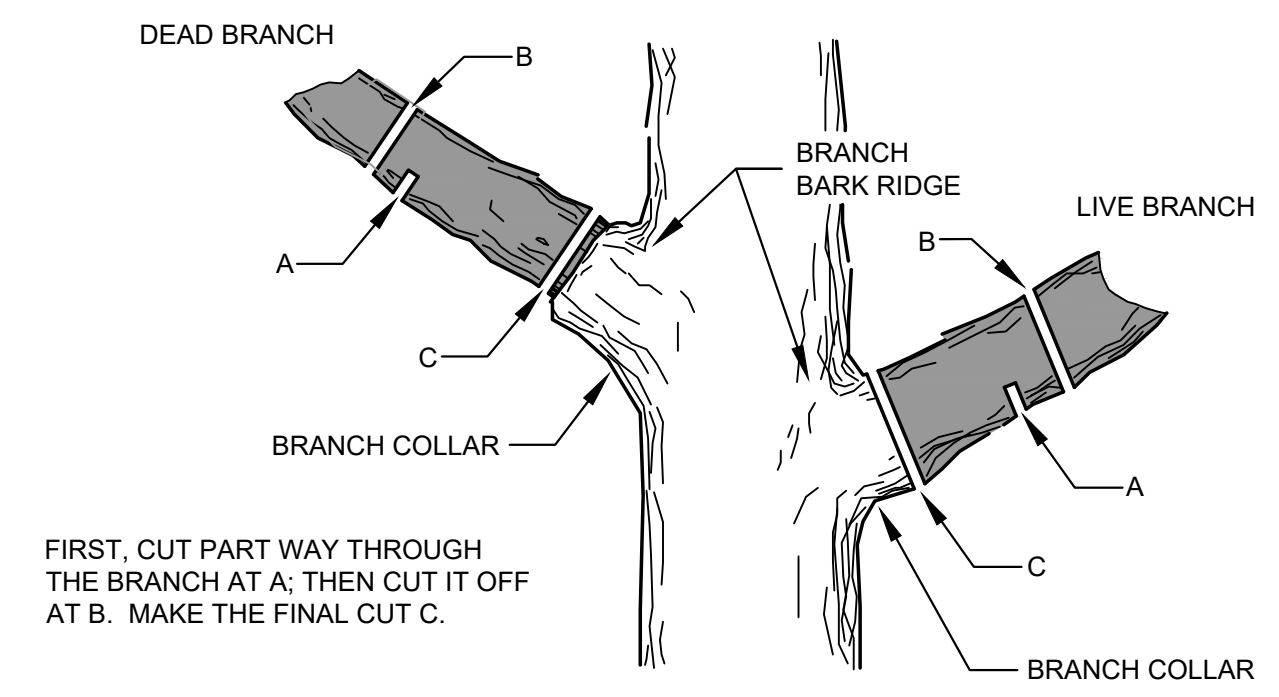
©2022 MKEC Engineering All Rights Reserved
www.mkec.com
These drawings and their contents, including, but not limited to, all concepts, designs, & ideas are the exclusive property of MKEC Engineering (MKEC), and may not be used or reproduced in any way without the express consent of MKEC.

LINE 1 PLAN & PROFILE

PROJECT NO.	468-2022-007724
DATE	03/25/2022
SCALE	1"=40'
DESIGNED	LM
DRAWN	CJL
CHECKED	SPE

NO.	REVISION	DATE

Distance from Main to Riser (L/R)	Distance from		NO.	TYPE	LOCATION			STATION	DIRECTION	FOR INFORMATION ONLY	
	Downstream MH	Upstream MH			LOT NO.	BLOCK NO.	LINE NO.			APPROXIMATE LENGTH	VERTICAL (FT)
21' Rt.	80'	69'	1	6" TEE	6	6	1	13+12 LT.	S	10'	21'
21' Rt.	70'	280'	2	6" TEE	5	6	1	15+12/LT.	S	13'	21'
21' Rt.	249'	103'	3	6" TEE	2A	6	1	16+90/LT.	S	15.5'	21'
26' Rt.	@ mh	@ mh	4	6" MH CONNECTION	4	6	1	17+92/LT.	W	16.5'	26'
26' Rt.	@ mh	@ mh	5	6" MH CONNECTION	3	6	1	18+63/LT.	W	15'	26'



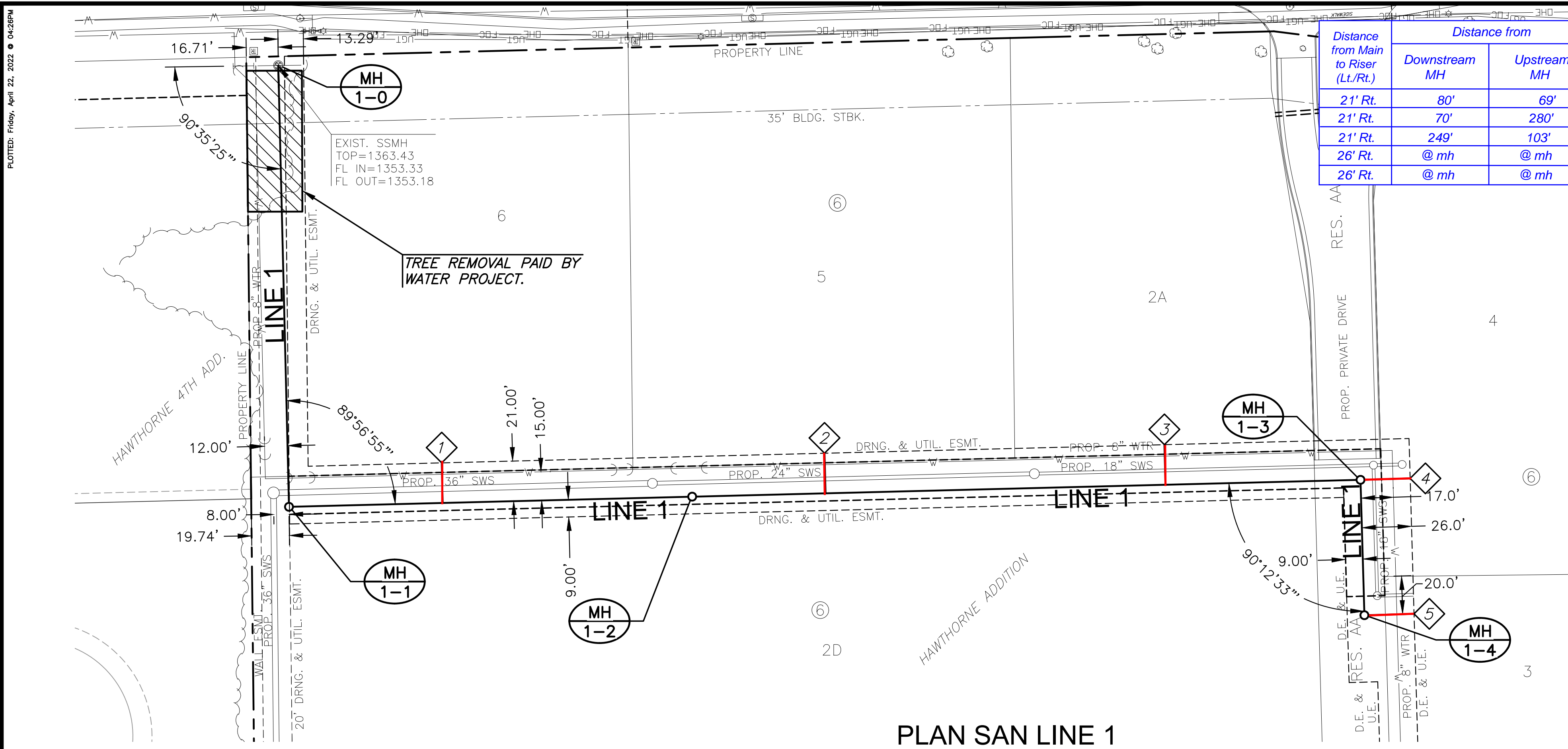
1 TREE TRIMMING DETAIL

SCALE: NTS

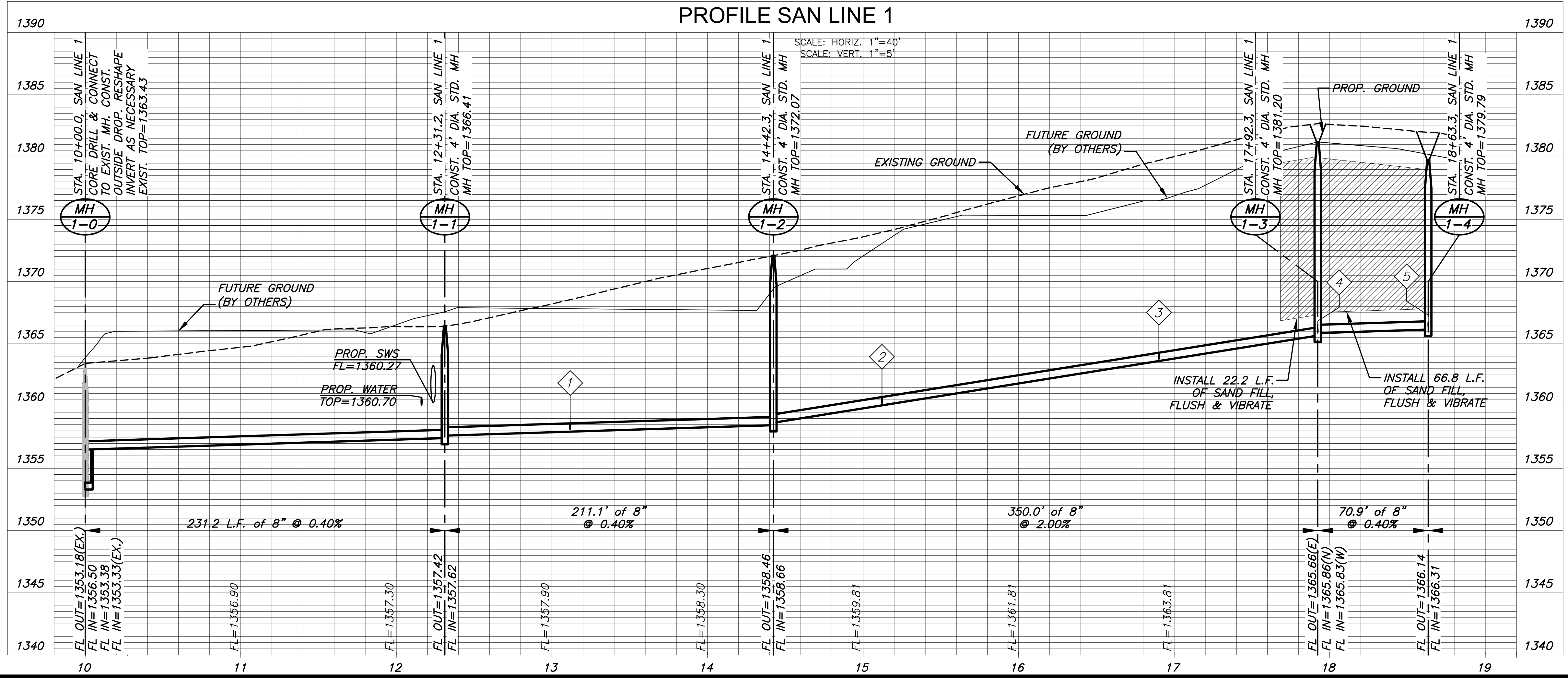
TREE TRIMMING NOTES

1. NOTIFY MKEC PROJECT ENGINEER PRIOR TO COMMENCEMENT OF EASEMENT CLEARING & GRUBBING OPERATIONS. CONTRACTOR SHALL HAVE LIMITS OF REMOVAL DEFINED WITH FLAG & LATH. MKEC PROJECT ENGINEER WILL PROVIDE JUDGEMENT CALLS FOR TREES IN QUESTION. PROVIDE MKEC 24-HOUR NOTICE. TREES MAY BE BURNED ON SITE. REGULATORY & PERMITTING APPROVALS SHALL BE SECURED BY CONTRACTOR.
2. TRIMMING OF BRANCHES SHALL NOT BE DONE WITH A BACKHOE!

NOTE:
CONTRACTOR TO VERIFY THE DEPTH AND LOCATION OF EXISTING UTILITIES PRIOR TO CONSTRUCTION.



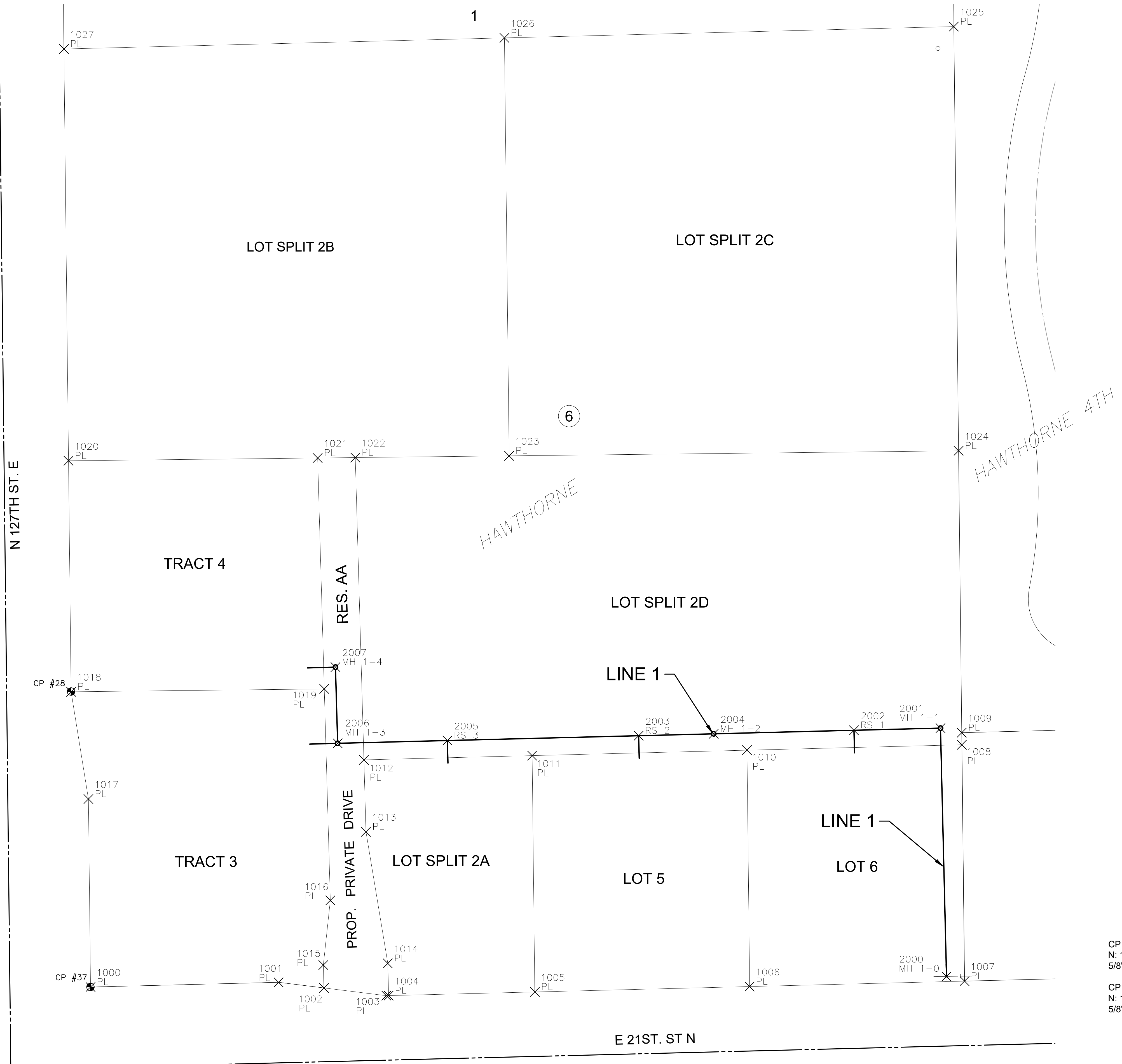
**PLAN SAN LINE 1
PROFILE SAN LINE 1**



PLOTTED: Fri, Apr 22, 2022 @ 04:28PM
 J:\PROJECTS\2022\220101016_TWENTYFIRST_HAWTHORNE DEVELOPMENT\00_22016 CAD\SHOTS\05 CIVIL\SAN\22016-05-2200.DWG

PLOTTED: Friday, April 22, 2022 @ 04:26PM

J:\PROJECTS\2022\20101016_TWENTYFIRST_HAWTHORNE DEVELOPMENT\00.22016 CAD\SHOTS\05 CIVIL\PLAN\2016-05-2500.DWG



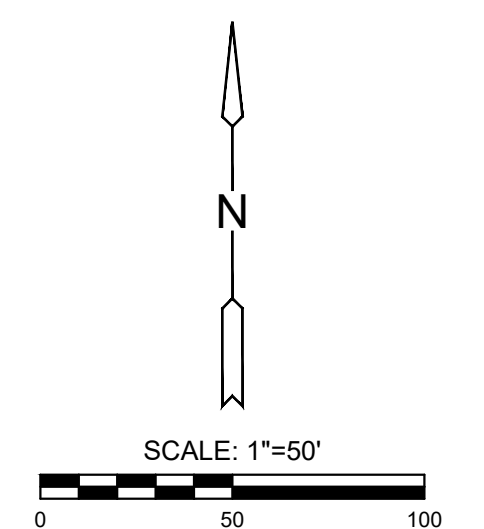
PLAT POINTS			
Point #	Northing	Easting	Desc.
1000	1699943.85	1691586.74	PL
1001	1699948.26	1691761.69	PL
1002	1699943.01	1691803.91	PL
1003	1699935.78	1691862.03	PL
1004	1699935.83	1691864.11	PL
1005	1699939.26	1692000.11	PL
1006	1699944.29	1692200.05	PL
1007	1699949.33	1692399.98	PL
1008	1700169.32	1692397.52	PL
1009	1700180.59	1692397.39	PL
1010	1700164.28	1692197.58	PL
1011	1700159.24	1691997.65	PL
1012	1700155.30	1691841.13	PL
1013	1700088.33	1691843.05	PL
1014	1699965.82	1691863.35	PL
1015	1699964.31	1691803.37	PL
1016	1700024.49	1691809.86	PL
1017	1700118.84	1691584.78	PL
1018	1700218.67	1691568.67	PL
1019	1700221.30	1691804.23	PL
1020	1700433.65	1691566.26	PL
1021	1700436.25	1691798.08	PL
1022	1700436.64	1691833.09	PL
1023	1700438.24	1691976.23	PL
1024	1700442.93	1692394.46	PL
1025	1700837.79	1692390.03	PL
1026	1700827.26	1691971.88	PL
1027	1700816.94	1691561.97	PL

SANITARY POINTS			
Point #	Northing	Easting	Desc.
2000	1699953.68	1692383.22	MH 1-0
2001	1700184.82	1692377.61	MH 1-1
2002	1700182.79	1692297.12	RS 1
2003	1700177.74	1692096.74	RS 2
2004	1700179.50	1692166.57	MH 1-2
2005	1700173.26	1691918.79	RS 3
2006	1700170.69	1691816.70	MH 1-3
2007	1700241.61	1691814.66	MH 1-4

CONTROL POINTS

CP 37
 N: 1699943.851 E: 1691586.743 ELEV.=1384.67
 5/8" by 24" Rebar with MKEC CLS39 cap

CP 28
 N: 1700218.885 E: 1691568.632 ELEV.=1383.42
 5/8" by 24" Rebar



EVERY ATTEMPT HAS BEEN MADE TO INSURE ALL COORDINATE VALUES SHOWN ARE AN ACCURATE AND TRUE REPRESENTATION OF THE CURRENT PLANS. ALL VALUES ARE TO BE CONFIRMED WITH THE FINAL SIGNED PLAN SET BEFORE USE.



PUBLIC SANITARY SEWER PLANS FOR
HAWTHORNE ADDITION
 WICHITA, KANSAS

©2022
 MKEC Engineering
 All Rights Reserved
 www.mkec.com
 These drawings and their contents, including, but not limited to, all concepts, designs, & ideas are the exclusive property of MKEC Engineering (MKEC), and may not be used or reproduced in any way without the express consent of MKEC.

BUBBLE MAP

PROJECT NO.	468-2022-007724	
DATE	03/25/2022	
SCALE	1"=40'	
DESIGNED	DRAWN	CHECKED
LM	C-JL	SPE
NO.	REVISION	DATE