

**BENCHMARKS:**  
 BM #1: "□" Cut in face of curb inlet near SE corner of Lot 30, Block C, Gray's 5th Add.  
 Elev. = 1297.86 NAVD88

BM #2: "□" Cut in top of curb on east side of Flora, ±10' north of south property line of Gray's 5th Add.  
 Elev. = 1302.40 NAVD88

BM #3: "+" Cut in top of curb on east side of Flora, adjacent to common lot line of Lots 6&7, Block B, Trinity Point Add.  
 Elev. = 1299.49 NAVD88

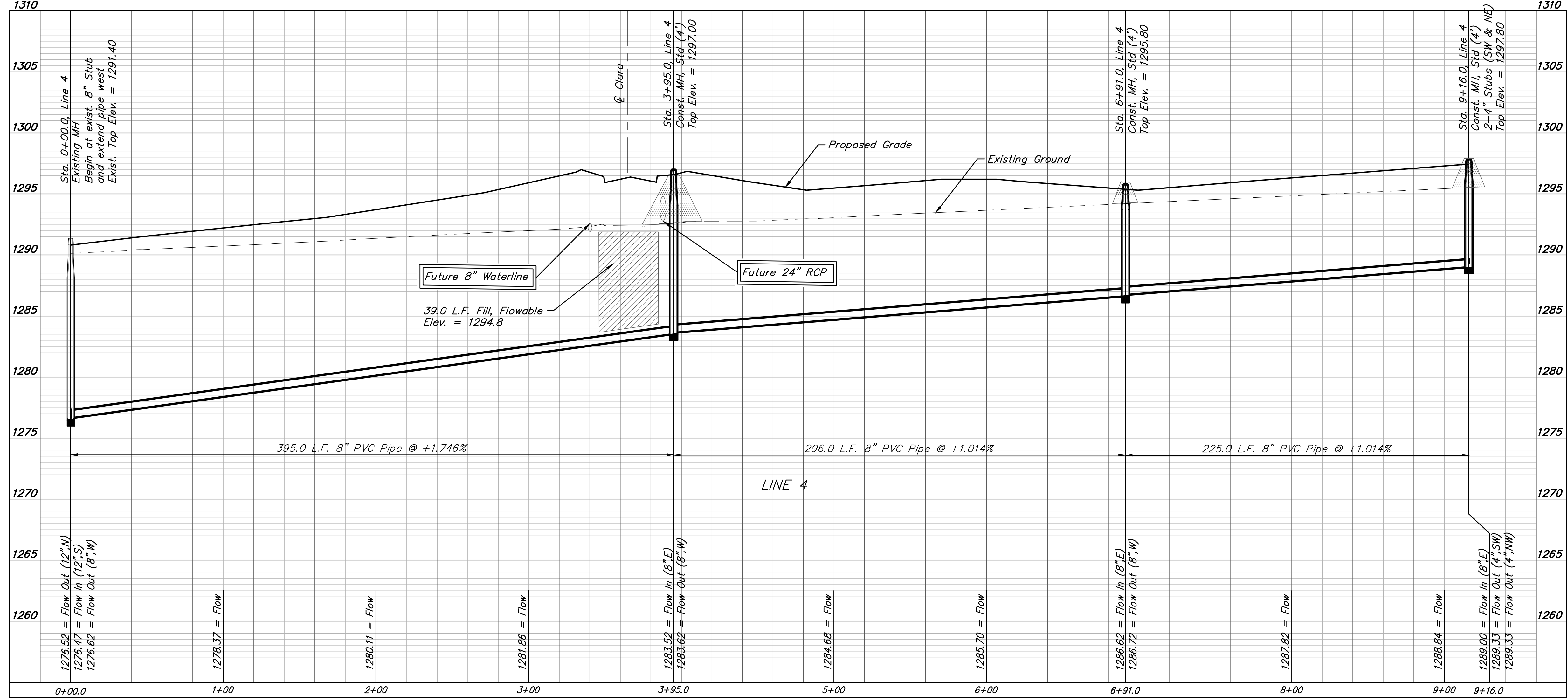
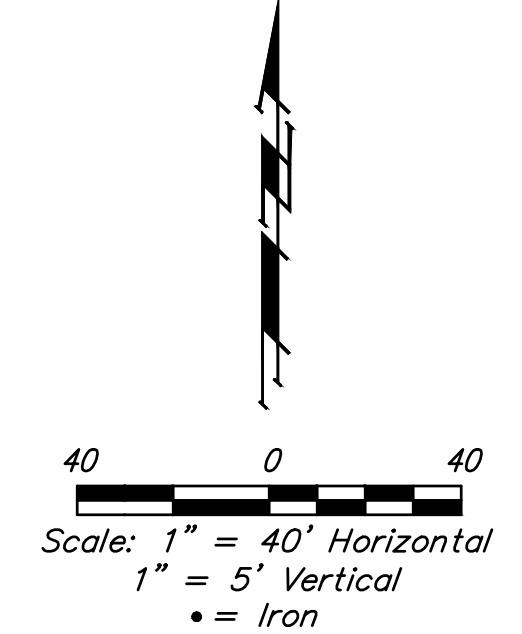
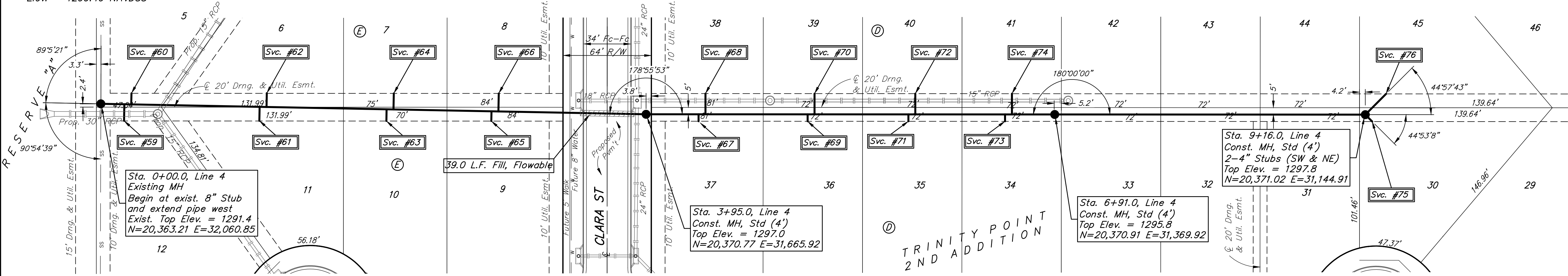
NUMBER	TYPE	LOT NO.	LOCATION		FLOWLINE		FOR INFORMATION ONLY		
			BLOCK	LINE NO.	STATION/DIRECTION	8" PIPE	4" PIPE	APPROXIMATE LENGTH OF 4" PIPE	
								VERTICAL	HORIZONTAL
59	4" Vertical Riser Assy	12	E	4	0+17.0 / Rt.	1276.92	1277.32	10.5'	12.0'
60	4" Vertical Riser Assy	5	E	4	0+22.0 / Lt.	1277.00	1277.33	10.4'	8.1'
61	4" Vertical Riser Assy	11	E	4	1+15.0 / Rt.	1278.63	1278.99	9.5'	10.0'
62	4" Vertical Riser Assy	6	E	4	1+20.0 / Lt.	1278.72	1279.08	9.4'	9.9'
63	4" Vertical Riser Assy	10	E	4	2+07.0 / Rt.	1280.24	1280.57	9.6'	8.4'
64	4" Vertical Riser Assy	7	E	4	2+12.0 / Lt.	1280.32	1280.72	9.5'	11.6'
65	4" Vertical Riser Assy	9	E	4	2+83.0 / Rt.	1281.56	1281.87	9.7'	7.0'
66	4" Vertical Riser Assy	8	E	4	2+88.0 / Lt.	1281.65	1282.08	9.4'	13.0'
67	4" Vertical Riser Assy	37	D	4	4+33.0 / Rt.	1284.18	1284.45	7.7'	5.0'

Bedding material shall be extended to an elevation 2' maximum below finished grade. All pipe including riser pipe shall be sand backfilled (flushed & vibrated). All service tees shall be rotated horizontally and extended at a 2% slope above horizontal to maintain lowest elevation possible to facilitate sewer service.

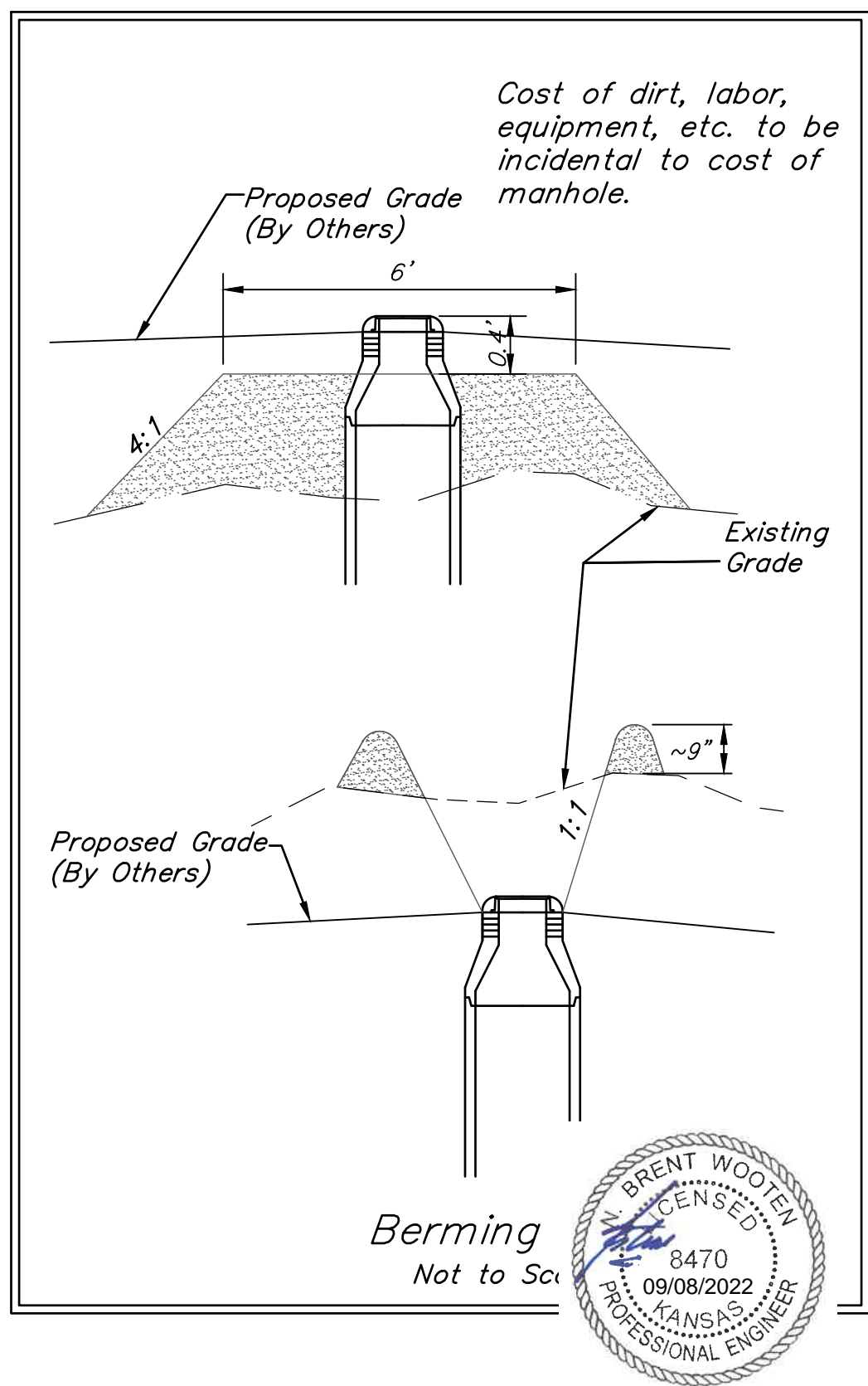
SEWER SERVICE TABLE

NUMBER	TYPE	LOT NO.	LOCATION		FLOWLINE		FOR INFORMATION ONLY		
			BLOCK	LINE NO.	STATION/DIRECTION	8" PIPE	4" PIPE	APPROXIMATE LENGTH OF 4" PIPE	
								VERTICAL	HORIZONTAL
68	4" Vertical Riser Assy	38	D	4	4+38.0 / Lt.	1284.37	1284.84	7.3'	15.0'
69	4" Vertical Riser Assy	36	D	4	5+12.0 / Rt.	1285.56	1285.83	5.8'	5.0'
70	4" Vertical Riser Assy	39	D	4	5+17.0 / Lt.	1285.75	1286.22	5.4'	15.0'
71	4" Vertical Riser Assy	35	D	4	5+85.0 / Rt.	1286.84	1287.10	5.1'	5.0'
72	4" Vertical Riser Assy	40	D	4	5+90.0 / Lt.	1287.03	1287.49	4.7'	15.0'
73	4" Vertical Riser Assy	34	D	4	6+55.0 / Rt.	1288.16	1288.43	3.3'	5.0'
74	4" Vertical Riser Assy	41	D	4	6+60.0 / Lt.	1288.25	1288.71	3.0'	15.0'
75	4" Stub	30	D	4	9+16.0 / Rt.	1290.65	1290.96	2.5'	7.1'
76	4" Stub	45	D	4	9+16.0 / Lt.	1290.65	1291.24	2.3'	21.2'

Bedding material shall be extended to an elevation 2' maximum below finished grade. All pipe including riser pipe shall be sand backfilled (flushed & vibrated). All service tees shall be rotated horizontally and extended at a 2% slope above horizontal to maintain lowest elevation possible to facilitate sewer service.



Contractor shall verify elevation and alignment of existing 8" stub prior to construction and notify Engineer of any discrepancy.



Berms Not to Scale